

Comm. No. \_\_\_\_\_

FRAIOLI-BLUM-YESSELMAN ASSOCIATES, CONSULTING ENGINEERS

Sheet No. SA-3

fs \_\_\_\_\_

Arch CLARK-NEXSEN-OWEN

Date DEC 10 1968

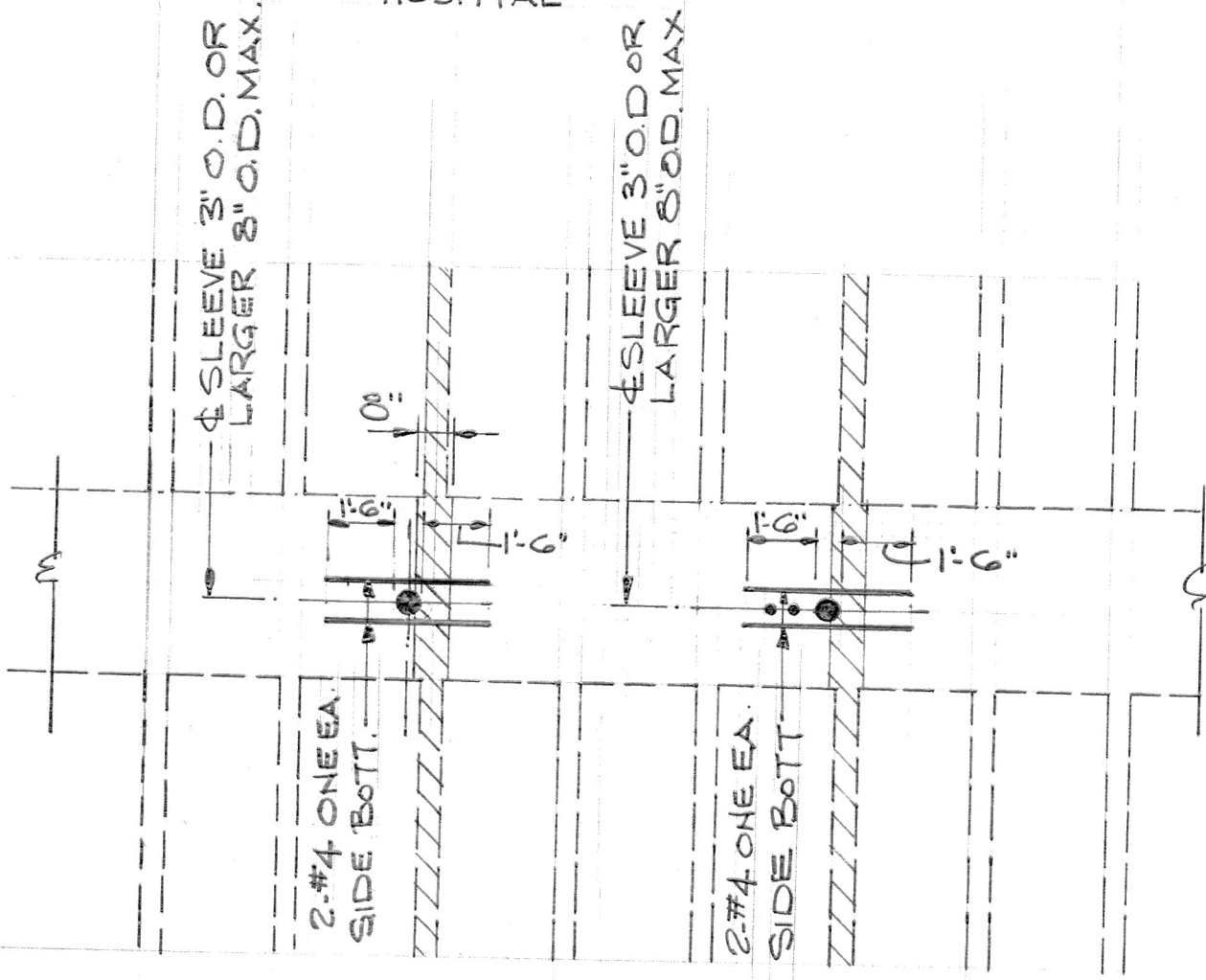
fc \_\_\_\_\_

Project GUGGENHIEMER MEM.

Subject CONST. DETAIL

Des. By DLI

HOSPITAL



DETAIL FOR PLACING OF  
ADDITION REINFORCING  
WHERE SLEEVES ENCROACH  
ON JOIST RIBS