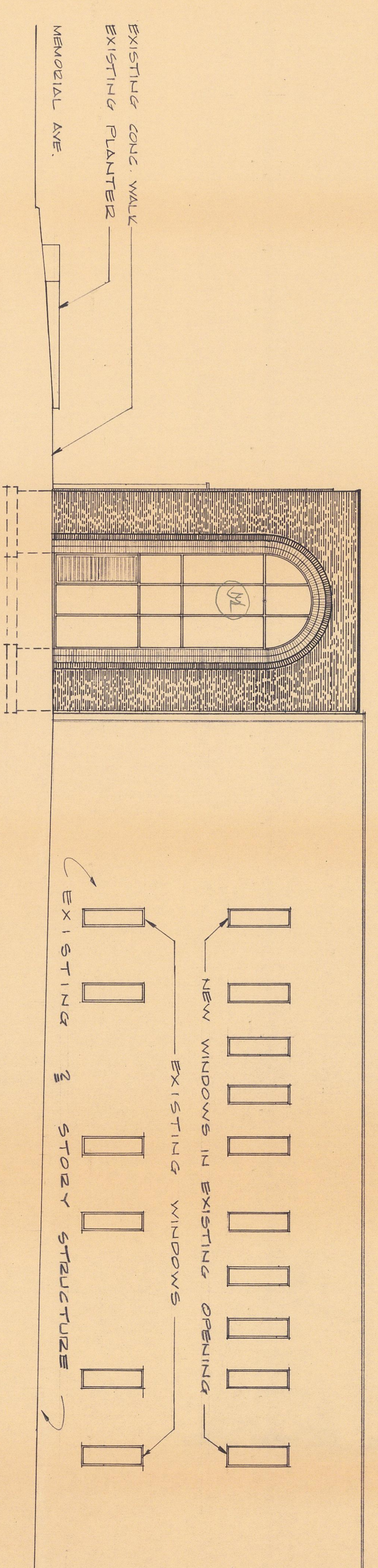


PARTIAL EAST ELEVATION  
1/8" = 1'-0"



PARTIAL NORTH ELEVATION  
1/8" = 1'-0"

THIS DRAWING IS  
**INCOMPLETE**  
 NOT FOR BIDDING  
 For Coordination & Progress Only  
 CLARK, NEXSEN, OWEN, BARBIERI & GIBSON  
 ARCHITECTS  
 DATE

These construction documents are for use in connection with the relocation of the Jones Memorial Library. They are not to be used for any other purpose without the written consent of the Architect/Engineer. The user shall indemnify and hold the Architect/Engineer harmless from and against all claims, damages, and reasonable attorney's fees resulting from the use of these documents.

|          |         |
|----------|---------|
| revision | design  |
| by       | by      |
| drawn    | drawn   |
| by       | by      |
| checked  | checked |
| date     | date    |
| scale    | scale   |
| sheet    | sheet   |
| total    | total   |
| drawing  | drawing |

RELOCATION OF THE  
**JONES MEMORIAL LIBRARY**  
 MEMORIAL AVE. & LAKESIDE DR.  
 LYNCHBURG, VIRGINIA

**CLARK • NEXSEN • OWEN • BARBIERI • GIBSON**  
 Architects • Engineers  
 A PROFESSIONAL CORPORATION  
 ALLIED ARTS BLDG., BOX 1156 • LYNCHBURG, VA. 24505 • 804 / 847-9081  
 740 DUKE STREET / SUITE 200 • NORFOLK, VA. 23510 • 804/622-2800