

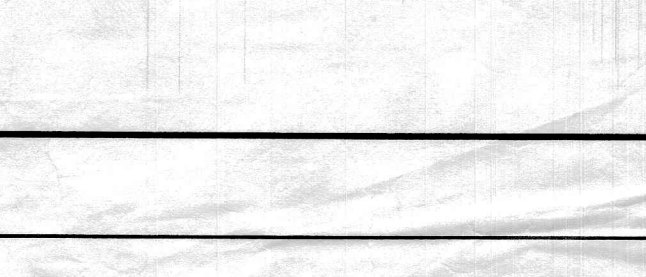
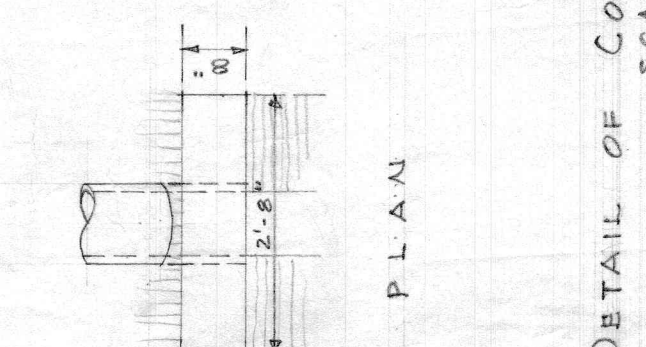
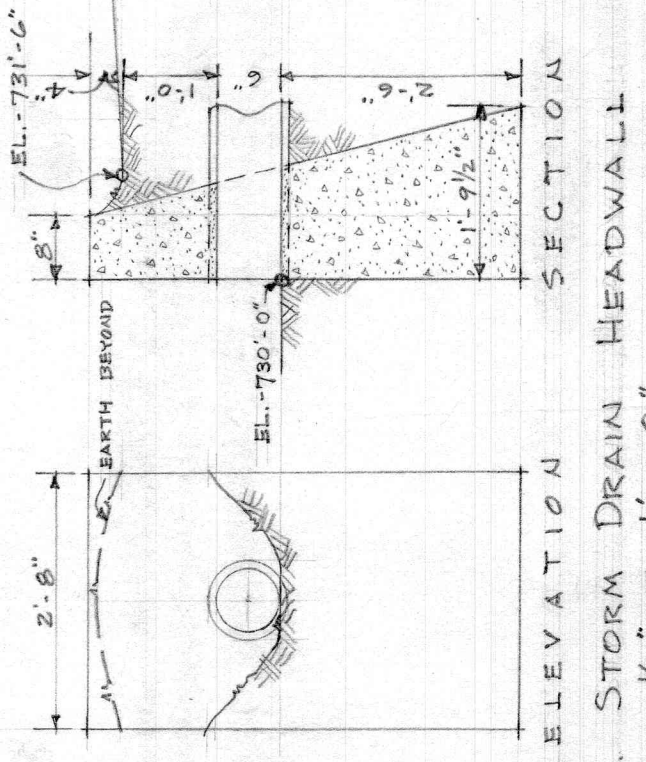
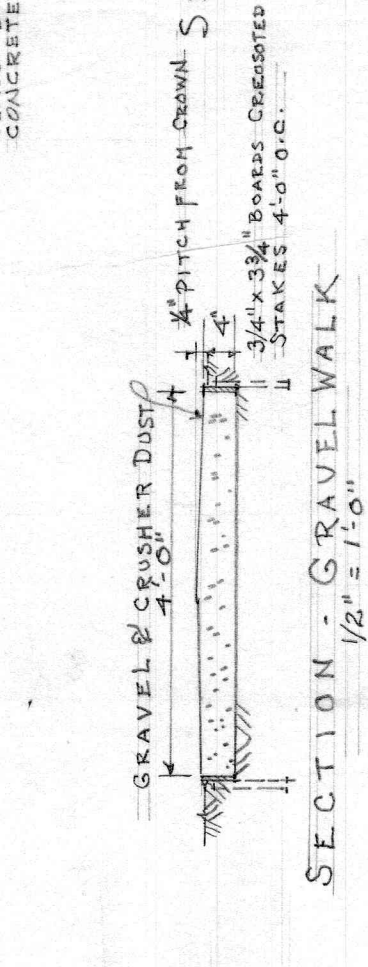
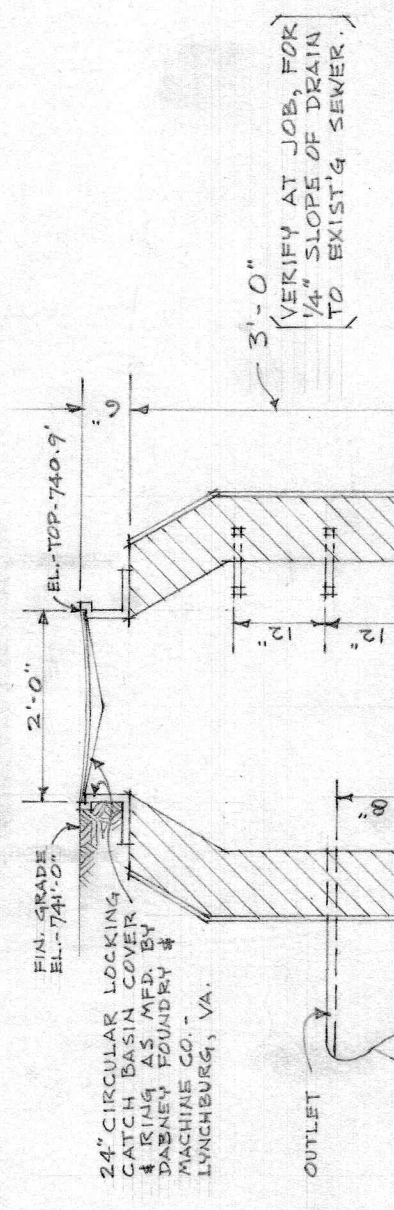
GYMNASIUM
VIRGINIA EPISCOPAL SCHOOL
 LYNCHBURG, VIRGINIA

PENDLETON S. CLARK, ARCHITECT
 LYNCHBURG VA.

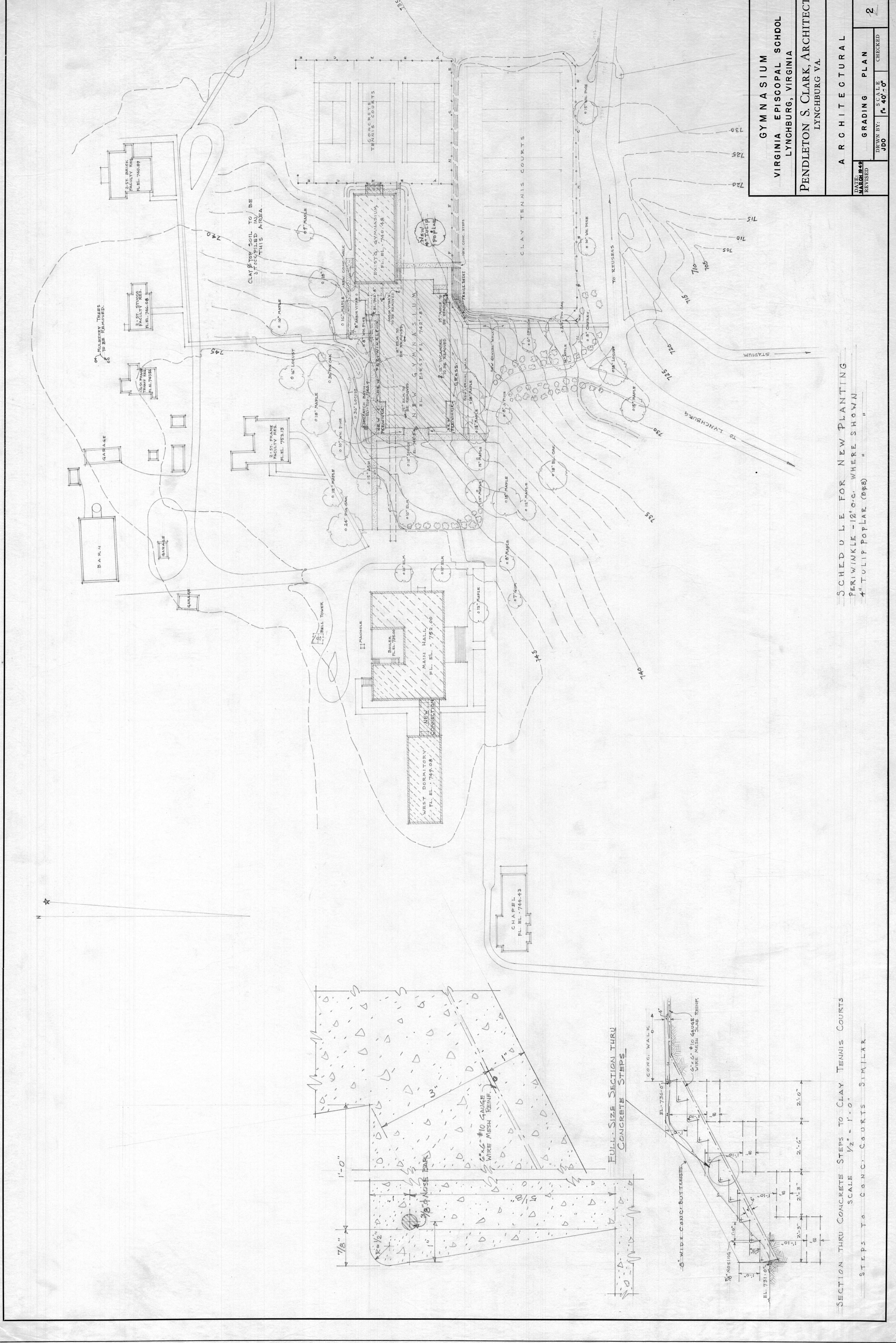
A R C H I T E C T U R A L

DATE: 1948	SITE PLAN	1
REVISED	SCALE	CHECKED
DRAWN BY: JCO	1" = 40'-0"	

- NEW CONSTRUCTION
- EXISTING BLDGS. TO BE REMODELED UNDER THIS CONTRACT
- EXISTING MASONRY BLDGS. UNCHANGED
- ELECTRIC LINES
- STEAM MAINS
- SEWER LINES
- TELEPHONE LINES
- WATER LINES

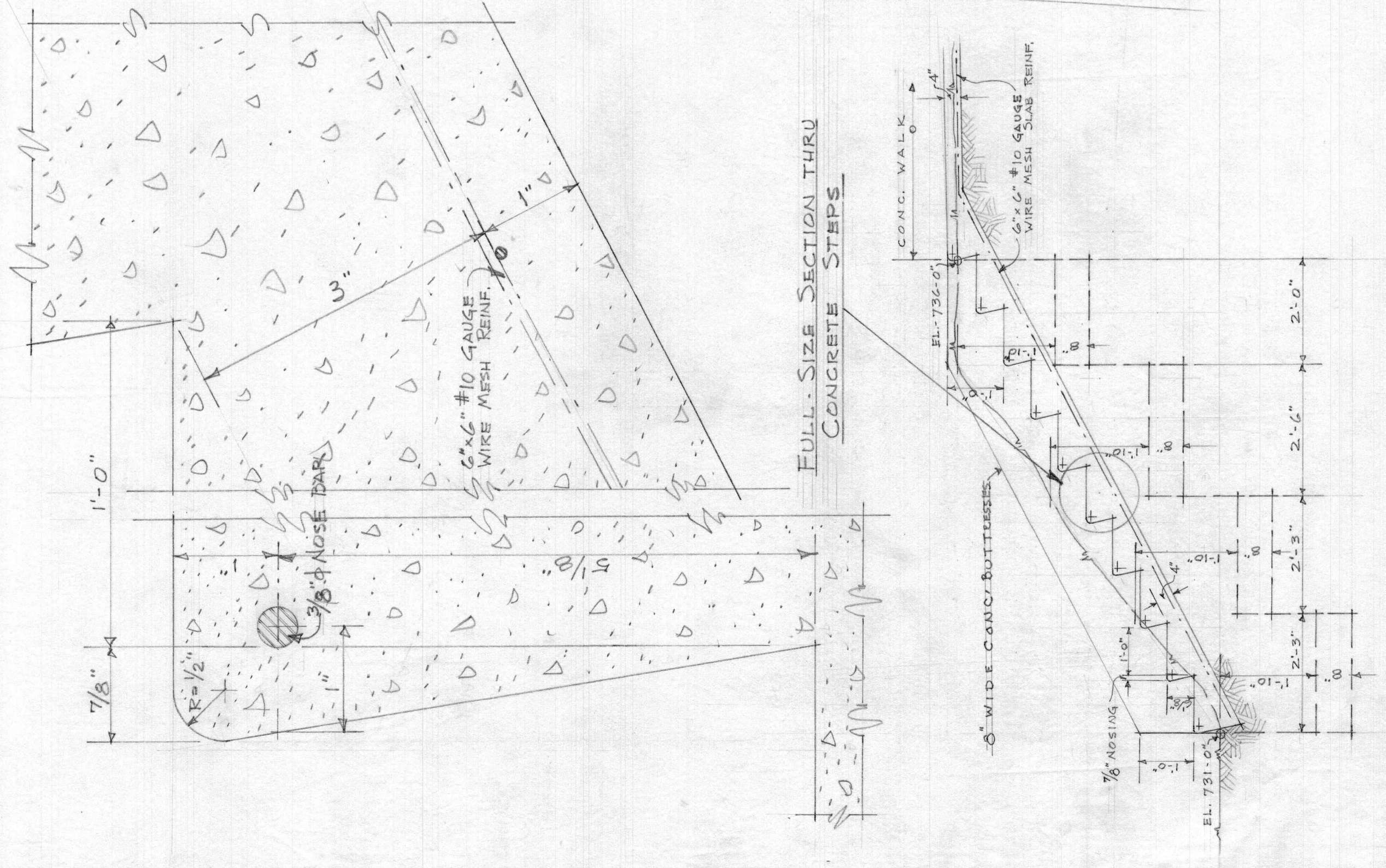


TUB 73
 SITE - UTILITY - PLAN



GYMNASIUM VIRGINIA EPISCOPAL SCHOOL LYNCHBURG, VIRGINIA PENDLETON S. CLARK, ARCHITECT LYNCHBURG VA.	
DATE REVISIONS JDD	SCALE 1" = 40'-0" CHECKED 2

SCHEDULE FOR NEW PLANTING
 PERIWINKLE - 12" O.C. WHERE SHOWN
 4" TULIP POPLAR (B&B)



SECTION THRU CONCRETE STEPS TO CLAY TENNIS COURTS
 SCALE 1/2" = 1'-0"
 STEPS TO CONC. COURTS SIMILAR

SCHEDULE OF AREA FINISHES						
AREA	FLOOR	WALLS	CEILING	WAINSCOT	TRIM	REMARKS
C	CONCRETE	UNPAINTED	UNPAINTED	NONE	NONE	
D	II	UNPAINTED	UNPAINTED	NONE	WOOD-TYPE B	
K	II	CEMENT PL. PAINTED	CEMENT PL. PAINTED	NONE	II	SEE DETAIL SHEET 10415

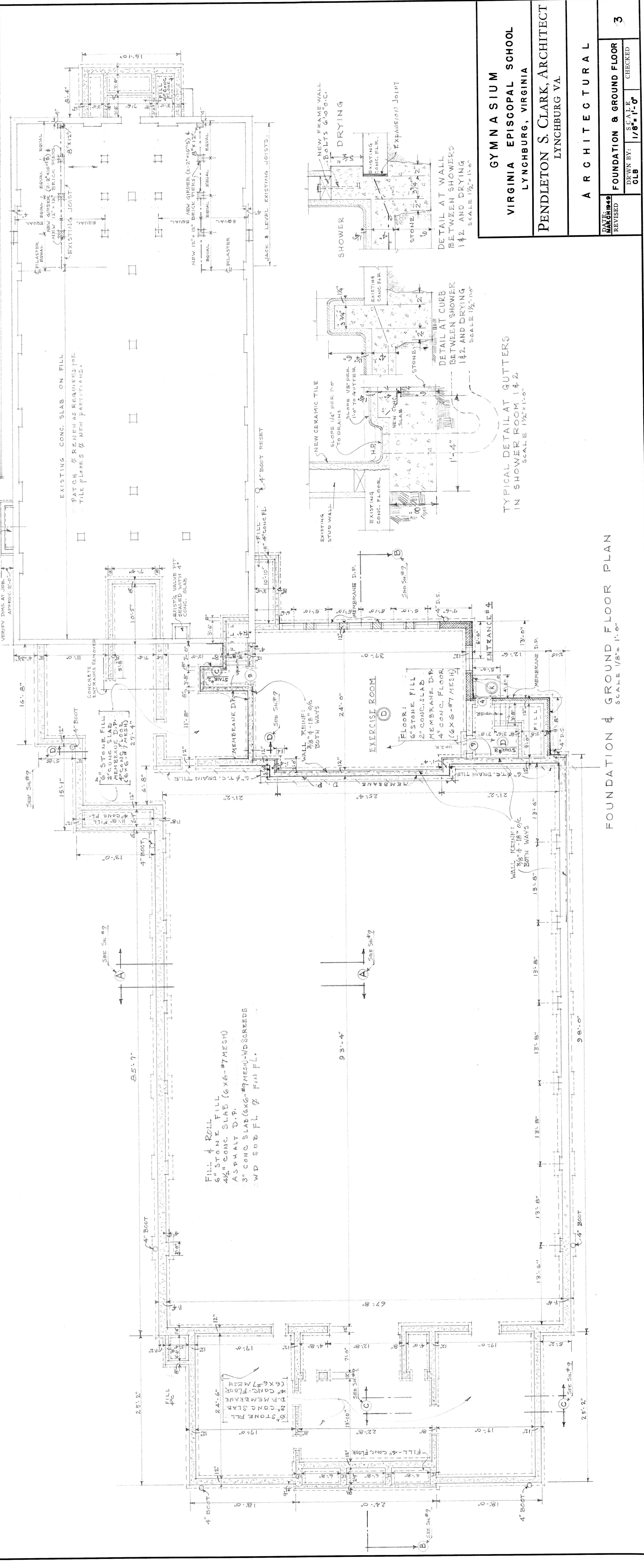
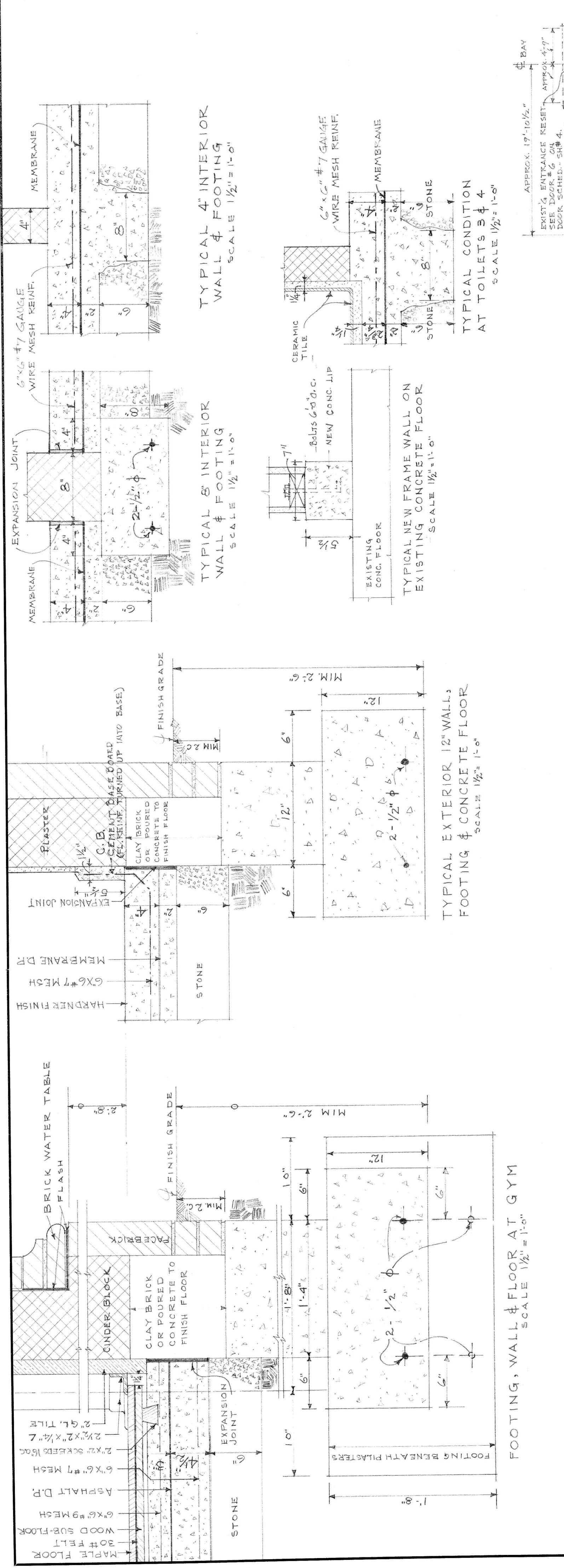
SCHEDULE OF DOORS							
NUMBER	DIMENSIONS	TYPE	MATERIAL	GLAZING	FRAMES	LINTELS	REMARKS
4	3'-0" X 6'-8" X 1 1/4"	HALF GLAZED	WOOD	D.S.B.	WOOD	SCHEDULE	
9	3'-0" X 6'-8" X 1 1/4"	2 PANEL	II	NONE	II	SH #	

LEGEND OF SYMBOLS	
	EXISTING WORK UNCHANGED
	EXISTING WORK REMOVED
	NEW FRAME
	NEW CINDER BLOCK
	NEW BRICK
	NEW STONE
	NEW CONCRETE
	STEEL AT LARGE SCALE
	STEEL AT SMALL SCALE

DOOR DESIGNATION	
(C)	FOYER #1

AREA FINISH DESIGNATION	
(C)	FOYER #1

WINDOW DESIGNATION	
(C)	FOYER #1



GYMNASIUM
VIRGINIA EPISCOPAL SCHOOL
 LYNCHBURG, VIRGINIA
PENDLETON S. CLARK, ARCHITECT
 LYNCHBURG VA.

FOUNDATION & GROUND FLOOR
 DRAWN BY: OLB
 SCALE: 1/8" = 1'-0"
 CHECKED: 3

ARCHITECTURAL
 FOUNDATION & GROUND FLOOR PLAN
 SCALE 1/8" = 1'-0"