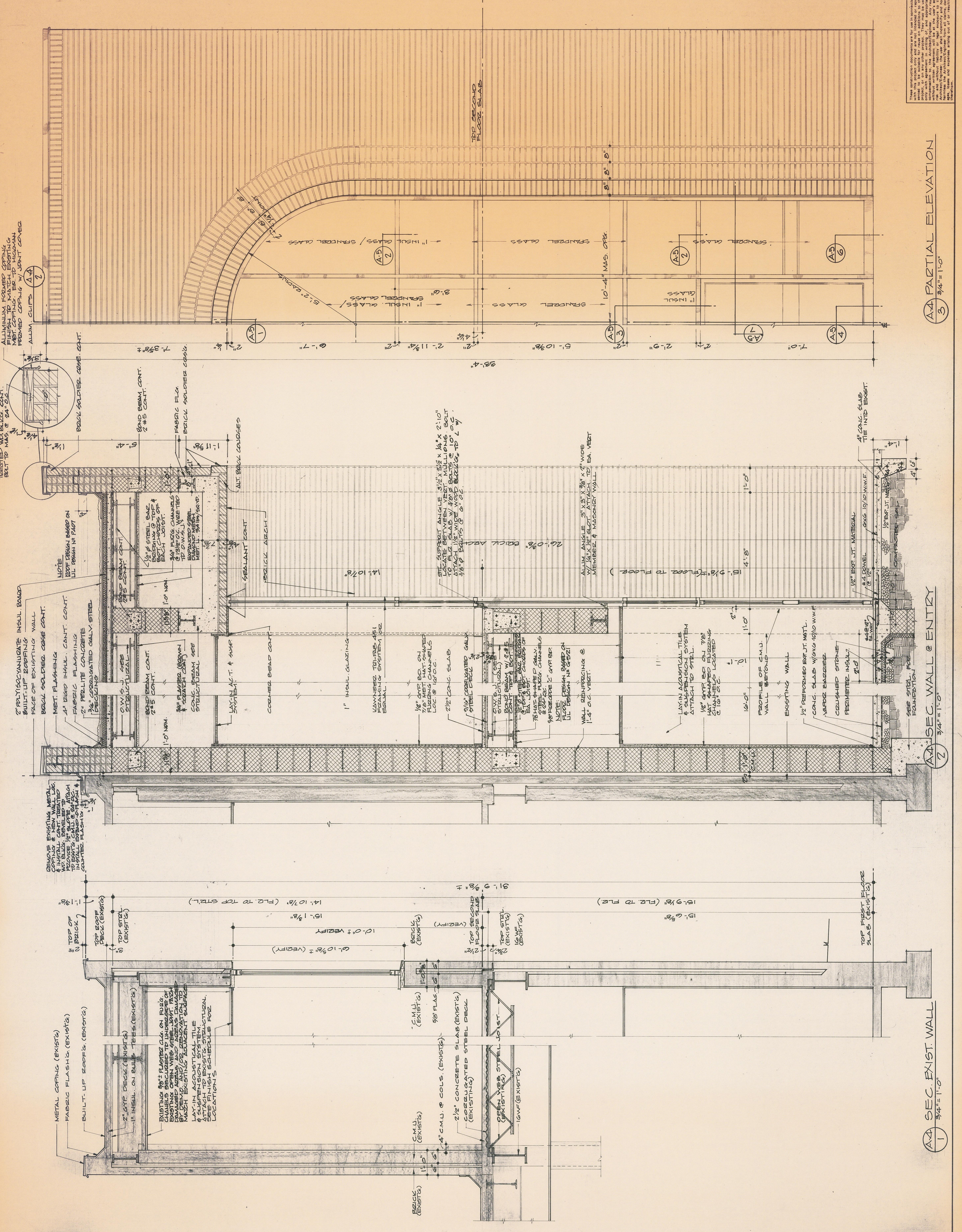


THIS DRAWING IS PROVIDED AS INFORMATION ONLY. THE ARCHITECT ASSUMES NO LIABILITY FOR THE ACCURACY OR COMPLETENESS OF THE INFORMATION PROVIDED. THE ARCHITECT'S LIABILITY IS LIMITED TO THE DESIGN AND CONSTRUCTION OF THE PROJECT AS SHOWN ON THIS DRAWING. THE ARCHITECT DOES NOT WARRANT THE ACCURACY OR COMPLETENESS OF THE INFORMATION PROVIDED. THE ARCHITECT'S LIABILITY IS LIMITED TO THE DESIGN AND CONSTRUCTION OF THE PROJECT AS SHOWN ON THIS DRAWING.



ALUMINUM FORMED COPING  
 MET. COPING W/ JOINT COVER  
 FORMED COPING W/ JOINT COVER  
 ALUM. CLIPS

2" POLYISOCYANURATE INSUL. BOARD  
 BUILT-UP ROOFING  
 FACE OF EXISTING WALL  
 BRICK SOLDIER COURSE CONT.

REMOVE EXISTING METAL  
 COPING & FLASHING  
 & INSTALL NEW COPING  
 TO EXIST. WALL & FLASHING  
 TO EXIST. BRICKS

METAL COPING (EXIST'G)  
 FABRIC FLASHING (EXIST'G)  
 BUILT-UP ROOFING (EXIST'G)  
 2" GYP. DECK (EXIST'G)  
 1" INSUL. ON BULK HEADS (EXIST'G)

EXISTING 3/8" PLASTER ON BRICK  
 WITH OPEN WEB STEEL JOIST FOR  
 DAMAGED AREAS AND ROOF'S DAMAGE  
 MATCH EXISTING ADJACENT PUBLIC  
 LAY-IN ACOUSTICAL TILE  
 & SUSPENSION SYSTEM. SEE  
 FINISH SCHEDULE FOR  
 LOCATIONS

BRICK (EXIST'G)  
 4" C.M.U. & COLS. (EXIST'G)  
 2 1/2" CONCRETE SLAB (EXIST'G)  
 CORRUGATED STEEL DECK  
 (EXIST'G)  
 OPEN WEB STEEL JOIST  
 16WF (EXIST'G)

NOTE  
 ROOF DESIGN BASED ON  
 ALL DESIGN IN PLAN

1/2" STEEL BAZ  
 BEAMS @ TOP  
 OF EACH JOIST  
 3/4" PLATE CHANNELS  
 @ 19" O.C. W/ 2" x 2"  
 CONG. BEAM SEE  
 STRUCTURAL

1" INSUL. GLAZING  
 KAYNEX TO-FRAME FEL  
 FLASHING SYSTEM PER  
 BRICK ARCH

1/2" EXP. JT. MATERIAL  
 1/4" PANEL  
 1/2" EXP. JT. MATERIAL  
 1/4" PANEL

1/2" EXP. JT. MATERIAL  
 1/4" PANEL  
 1/2" EXP. JT. MATERIAL  
 1/4" PANEL

2" POLYISOCYANURATE INSUL. BOARD  
 BUILT-UP ROOFING  
 FACE OF EXISTING WALL  
 BRICK SOLDIER COURSE CONT.

REMOVE EXISTING METAL  
 COPING & FLASHING  
 & INSTALL NEW COPING  
 TO EXIST. WALL & FLASHING  
 TO EXIST. BRICKS

METAL COPING (EXIST'G)  
 FABRIC FLASHING (EXIST'G)  
 BUILT-UP ROOFING (EXIST'G)  
 2" GYP. DECK (EXIST'G)  
 1" INSUL. ON BULK HEADS (EXIST'G)

BRICK (EXIST'G)  
 4" C.M.U. & COLS. (EXIST'G)  
 2 1/2" CONCRETE SLAB (EXIST'G)  
 CORRUGATED STEEL DECK  
 (EXIST'G)  
 OPEN WEB STEEL JOIST  
 16WF (EXIST'G)

1/2" EXP. JT. MATERIAL  
 1/4" PANEL  
 1/2" EXP. JT. MATERIAL  
 1/4" PANEL

NOTE  
 ROOF DESIGN BASED ON  
 ALL DESIGN IN PLAN

1/2" STEEL BAZ  
 BEAMS @ TOP  
 OF EACH JOIST  
 3/4" PLATE CHANNELS  
 @ 19" O.C. W/ 2"  
 CONG. BEAM SEE  
 STRUCTURAL

1" INSUL. GLAZING  
 KAYNEX TO-FRAME FEL  
 FLASHING SYSTEM PER  
 BRICK ARCH

1/2" EXP. JT. MATERIAL  
 1/4" PANEL  
 1/2" EXP. JT. MATERIAL  
 1/4" PANEL

1/2" EXP. JT. MATERIAL  
 1/4" PANEL  
 1/2" EXP. JT. MATERIAL  
 1/4" PANEL

2" POLYISOCYANURATE INSUL. BOARD  
 BUILT-UP ROOFING  
 FACE OF EXISTING WALL  
 BRICK SOLDIER COURSE CONT.

REMOVE EXISTING METAL  
 COPING & FLASHING  
 & INSTALL NEW COPING  
 TO EXIST. WALL & FLASHING  
 TO EXIST. BRICKS

METAL COPING (EXIST'G)  
 FABRIC FLASHING (EXIST'G)  
 BUILT-UP ROOFING (EXIST'G)  
 2" GYP. DECK (EXIST'G)  
 1" INSUL. ON BULK HEADS (EXIST'G)

BRICK (EXIST'G)  
 4" C.M.U. & COLS. (EXIST'G)  
 2 1/2" CONCRETE SLAB (EXIST'G)  
 CORRUGATED STEEL DECK  
 (EXIST'G)  
 OPEN WEB STEEL JOIST  
 16WF (EXIST'G)

1/2" EXP. JT. MATERIAL  
 1/4" PANEL  
 1/2" EXP. JT. MATERIAL  
 1/4" PANEL

NOTE  
 ROOF DESIGN BASED ON  
 ALL DESIGN IN PLAN

1/2" STEEL BAZ  
 BEAMS @ TOP  
 OF EACH JOIST  
 3/4" PLATE CHANNELS  
 @ 19" O.C. W/ 2"  
 CONG. BEAM SEE  
 STRUCTURAL

1" INSUL. GLAZING  
 KAYNEX TO-FRAME FEL  
 FLASHING SYSTEM PER  
 BRICK ARCH

1/2" EXP. JT. MATERIAL  
 1/4" PANEL  
 1/2" EXP. JT. MATERIAL  
 1/4" PANEL

1/2" EXP. JT. MATERIAL  
 1/4" PANEL  
 1/2" EXP. JT. MATERIAL  
 1/4" PANEL

2" POLYISOCYANURATE INSUL. BOARD  
 BUILT-UP ROOFING  
 FACE OF EXISTING WALL  
 BRICK SOLDIER COURSE CONT.

REMOVE EXISTING METAL  
 COPING & FLASHING  
 & INSTALL NEW COPING  
 TO EXIST. WALL & FLASHING  
 TO EXIST. BRICKS

METAL COPING (EXIST'G)  
 FABRIC FLASHING (EXIST'G)  
 BUILT-UP ROOFING (EXIST'G)  
 2" GYP. DECK (EXIST'G)  
 1" INSUL. ON BULK HEADS (EXIST'G)

BRICK (EXIST'G)  
 4" C.M.U. & COLS. (EXIST'G)  
 2 1/2" CONCRETE SLAB (EXIST'G)  
 CORRUGATED STEEL DECK  
 (EXIST'G)  
 OPEN WEB STEEL JOIST  
 16WF (EXIST'G)

1/2" EXP. JT. MATERIAL  
 1/4" PANEL  
 1/2" EXP. JT. MATERIAL  
 1/4" PANEL

NOTE  
 ROOF DESIGN BASED ON  
 ALL DESIGN IN PLAN

1/2" STEEL BAZ  
 BEAMS @ TOP  
 OF EACH JOIST  
 3/4" PLATE CHANNELS  
 @ 19" O.C. W/ 2"  
 CONG. BEAM SEE  
 STRUCTURAL

1" INSUL. GLAZING  
 KAYNEX TO-FRAME FEL  
 FLASHING SYSTEM PER  
 BRICK ARCH

1/2" EXP. JT. MATERIAL  
 1/4" PANEL  
 1/2" EXP. JT. MATERIAL  
 1/4" PANEL

1/2" EXP. JT. MATERIAL  
 1/4" PANEL  
 1/2" EXP. JT. MATERIAL  
 1/4" PANEL

2" POLYISOCYANURATE INSUL. BOARD  
 BUILT-UP ROOFING  
 FACE OF EXISTING WALL  
 BRICK SOLDIER COURSE CONT.

REMOVE EXISTING METAL  
 COPING & FLASHING  
 & INSTALL NEW COPING  
 TO EXIST. WALL & FLASHING  
 TO EXIST. BRICKS

METAL COPING (EXIST'G)  
 FABRIC FLASHING (EXIST'G)  
 BUILT-UP ROOFING (EXIST'G)  
 2" GYP. DECK (EXIST'G)  
 1" INSUL. ON BULK HEADS (EXIST'G)

BRICK (EXIST'G)  
 4" C.M.U. & COLS. (EXIST'G)  
 2 1/2" CONCRETE SLAB (EXIST'G)  
 CORRUGATED STEEL DECK  
 (EXIST'G)  
 OPEN WEB STEEL JOIST  
 16WF (EXIST'G)

1/2" EXP. JT. MATERIAL  
 1/4" PANEL  
 1/2" EXP. JT. MATERIAL  
 1/4" PANEL

NOTE  
 ROOF DESIGN BASED ON  
 ALL DESIGN IN PLAN

1/2" STEEL BAZ  
 BEAMS @ TOP  
 OF EACH JOIST  
 3/4" PLATE CHANNELS  
 @ 19" O.C. W/ 2"  
 CONG. BEAM SEE  
 STRUCTURAL

1" INSUL. GLAZING  
 KAYNEX TO-FRAME FEL  
 FLASHING SYSTEM PER  
 BRICK ARCH

1/2" EXP. JT. MATERIAL  
 1/4" PANEL  
 1/2" EXP. JT. MATERIAL  
 1/4" PANEL

1/2" EXP. JT. MATERIAL  
 1/4" PANEL  
 1/2" EXP. JT. MATERIAL  
 1/4" PANEL

2" POLYISOCYANURATE INSUL. BOARD  
 BUILT-UP ROOFING  
 FACE OF EXISTING WALL  
 BRICK SOLDIER COURSE CONT.

REMOVE EXISTING METAL  
 COPING & FLASHING  
 & INSTALL NEW COPING  
 TO EXIST. WALL & FLASHING  
 TO EXIST. BRICKS

METAL COPING (EXIST'G)  
 FABRIC FLASHING (EXIST'G)  
 BUILT-UP ROOFING (EXIST'G)  
 2" GYP. DECK (EXIST'G)  
 1" INSUL. ON BULK HEADS (EXIST'G)

BRICK (EXIST'G)  
 4" C.M.U. & COLS. (EXIST'G)  
 2 1/2" CONCRETE SLAB (EXIST'G)  
 CORRUGATED STEEL DECK  
 (EXIST'G)  
 OPEN WEB STEEL JOIST  
 16WF (EXIST'G)

1/2" EXP. JT. MATERIAL  
 1/4" PANEL  
 1/2" EXP. JT. MATERIAL  
 1/4" PANEL

NOTE  
 ROOF DESIGN BASED ON  
 ALL DESIGN IN PLAN

1/2" STEEL BAZ  
 BEAMS @ TOP  
 OF EACH JOIST  
 3/4" PLATE CHANNELS  
 @ 19" O.C. W/ 2"  
 CONG. BEAM SEE  
 STRUCTURAL

1" INSUL. GLAZING  
 KAYNEX TO-FRAME FEL  
 FLASHING SYSTEM PER  
 BRICK ARCH

1/2" EXP. JT. MATERIAL  
 1/4" PANEL  
 1/2" EXP. JT. MATERIAL  
 1/4" PANEL

1/2" EXP. JT. MATERIAL  
 1/4" PANEL  
 1/2" EXP. JT. MATERIAL  
 1/4" PANEL

2" POLYISOCYANURATE INSUL. BOARD  
 BUILT-UP ROOFING  
 FACE OF EXISTING WALL  
 BRICK SOLDIER COURSE CONT.

REMOVE EXISTING METAL  
 COPING & FLASHING  
 & INSTALL NEW COPING  
 TO EXIST. WALL & FLASHING  
 TO EXIST. BRICKS

METAL COPING (EXIST'G)  
 FABRIC FLASHING (EXIST'G)  
 BUILT-UP ROOFING (EXIST'G)  
 2" GYP. DECK (EXIST'G)  
 1" INSUL. ON BULK HEADS (EXIST'G)

BRICK (EXIST'G)  
 4" C.M.U. & COLS. (EXIST'G)  
 2 1/2" CONCRETE SLAB (EXIST'G)  
 CORRUGATED STEEL DECK  
 (EXIST'G)  
 OPEN WEB STEEL JOIST  
 16WF (EXIST'G)

1/2" EXP. JT. MATERIAL  
 1/4" PANEL  
 1/2" EXP. JT. MATERIAL  
 1/4" PANEL

NOTE  
 ROOF DESIGN BASED ON  
 ALL DESIGN IN PLAN

1/2" STEEL BAZ  
 BEAMS @ TOP  
 OF EACH JOIST  
 3/4" PLATE CHANNELS  
 @ 19" O.C. W/ 2"  
 CONG. BEAM SEE  
 STRUCTURAL

1" INSUL. GLAZING  
 KAYNEX TO-FRAME FEL  
 FLASHING SYSTEM PER  
 BRICK ARCH

1/2" EXP. JT. MATERIAL  
 1/4" PANEL  
 1/2" EXP. JT. MATERIAL  
 1/4" PANEL

1/2" EXP. JT. MATERIAL  
 1/4" PANEL  
 1/2" EXP. JT. MATERIAL  
 1/4" PANEL

2" POLYISOCYANURATE INSUL. BOARD  
 BUILT-UP ROOFING  
 FACE OF EXISTING WALL  
 BRICK SOLDIER COURSE CONT.

REMOVE EXISTING METAL  
 COPING & FLASHING  
 & INSTALL NEW COPING  
 TO EXIST. WALL & FLASHING  
 TO EXIST. BRICKS

METAL COPING (EXIST'G)  
 FABRIC FLASHING (EXIST'G)  
 BUILT-UP ROOFING (EXIST'G)  
 2" GYP. DECK (EXIST'G)  
 1" INSUL. ON BULK HEADS (EXIST'G)

BRICK (EXIST'G)  
 4" C.M.U. & COLS. (EXIST'G)  
 2 1/2" CONCRETE SLAB (EXIST'G)  
 CORRUGATED STEEL DECK  
 (EXIST'G)  
 OPEN WEB STEEL JOIST  
 16WF (EXIST'G)

1/2" EXP. JT. MATERIAL  
 1/4" PANEL  
 1/2" EXP. JT. MATERIAL  
 1/4" PANEL

NOTE  
 ROOF DESIGN BASED ON  
 ALL DESIGN IN PLAN

1/2" STEEL BAZ  
 BEAMS @ TOP  
 OF EACH JOIST  
 3/4" PLATE CHANNELS  
 @ 19" O.C. W/ 2"  
 CONG. BEAM SEE  
 STRUCTURAL

1" INSUL. GLAZING  
 KAYNEX TO-FRAME FEL  
 FLASHING SYSTEM PER  
 BRICK ARCH

1/2" EXP. JT. MATERIAL  
 1/4" PANEL  
 1/2" EXP. JT. MATERIAL  
 1/4" PANEL

1/2" EXP. JT. MATERIAL  
 1/4" PANEL  
 1/2" EXP. JT. MATERIAL  
 1/4" PANEL

2" POLYISOCYANURATE INSUL. BOARD  
 BUILT-UP ROOFING  
 FACE OF EXISTING WALL  
 BRICK SOLDIER COURSE CONT.

REMOVE EXISTING METAL  
 COPING & FLASHING  
 & INSTALL NEW COPING  
 TO EXIST. WALL & FLASHING  
 TO EXIST. BRICKS

METAL COPING (EXIST'G)  
 FABRIC FLASHING (EXIST'G)  
 BUILT-UP ROOFING (EXIST'G)  
 2" GYP. DECK (EXIST'G)  
 1" INSUL. ON BULK HEADS (EXIST'G)

BRICK (EXIST'G)  
 4" C.M.U. & COLS. (EXIST'G)  
 2 1/2" CONCRETE SLAB (EXIST'G)  
 CORRUGATED STEEL DECK  
 (EXIST'G)  
 OPEN WEB STEEL JOIST  
 16WF (EXIST'G)

1/2" EXP. JT. MATERIAL  
 1/4" PANEL  
 1/2" EXP. JT. MATERIAL  
 1/4" PANEL

NOTE  
 ROOF DESIGN BASED ON  
 ALL DESIGN IN PLAN

1/2" STEEL BAZ  
 BEAMS @ TOP  
 OF EACH JOIST  
 3/4" PLATE CHANNELS  
 @ 19" O.C. W/ 2"  
 CONG. BEAM SEE  
 STRUCTURAL

1" INSUL. GLAZING  
 KAYNEX TO-FRAME FEL  
 FLASHING SYSTEM PER  
 BRICK ARCH

1/2" EXP. JT. MATERIAL  
 1/4" PANEL  
 1/2" EXP. JT. MATERIAL  
 1/4" PANEL

1/2" EXP. JT. MATERIAL  
 1/4" PANEL  
 1/2" EXP. JT. MATERIAL  
 1/4" PANEL

2" POLYISOCYANURATE INSUL. BOARD  
 BUILT-UP ROOFING  
 FACE OF EXISTING WALL  
 BRICK SOLDIER COURSE CONT.

REMOVE EXISTING METAL  
 COPING & FLASHING  
 & INSTALL NEW COPING  
 TO EXIST. WALL & FLASHING  
 TO EXIST. BRICKS

METAL COPING (EXIST'G)  
 FABRIC FLASHING (EXIST'G)  
 BUILT-UP ROOFING (EXIST'G)  
 2" GYP. DECK (EXIST'G)  
 1" INSUL. ON BULK HEADS (EXIST'G)

BRICK (EXIST'G)  
 4" C.M.U. & COLS. (EXIST'G)  
 2 1/2" CONCRETE SLAB (EXIST'G)  
 CORRUGATED STEEL DECK  
 (EXIST'G)  
 OPEN WEB STEEL JOIST  
 16WF (EXIST'G)

1/2" EXP. JT. MATERIAL  
 1/4" PANEL  
 1/2" EXP. JT. MATERIAL  
 1/4" PANEL

NOTE  
 ROOF DESIGN BASED ON  
 ALL DESIGN IN PLAN

1/2" STEEL BAZ  
 BEAMS @ TOP  
 OF EACH JOIST  
 3/4" PLATE CHANNELS  
 @ 19" O.C. W/ 2"  
 CONG. BEAM SEE  
 STRUCTURAL

1" INSUL. GLAZING  
 KAYNEX TO-FRAME FEL  
 FLASHING SYSTEM PER  
 BRICK ARCH

1/2" EXP. JT. MATERIAL  
 1/4" PANEL  
 1/2" EXP. JT. MATERIAL  
 1/4" PANEL

1/2" EXP. JT. MATERIAL  
 1/4" PANEL  
 1/2" EXP. JT. MATERIAL  
 1/4" PANEL

AA-2 PARTIAL ELEVATION  
 3/4" = 1'-0"

AA-1 SEC. WALL @ ENTRY  
 3/4" = 1'-0"