

Comm. No. N-1383

FRAIOLI-BLUM-YESELMAN ASSOCIATES, CONSULTING ENGINEERS

Sheet No. SX-2

fs \_\_\_\_\_

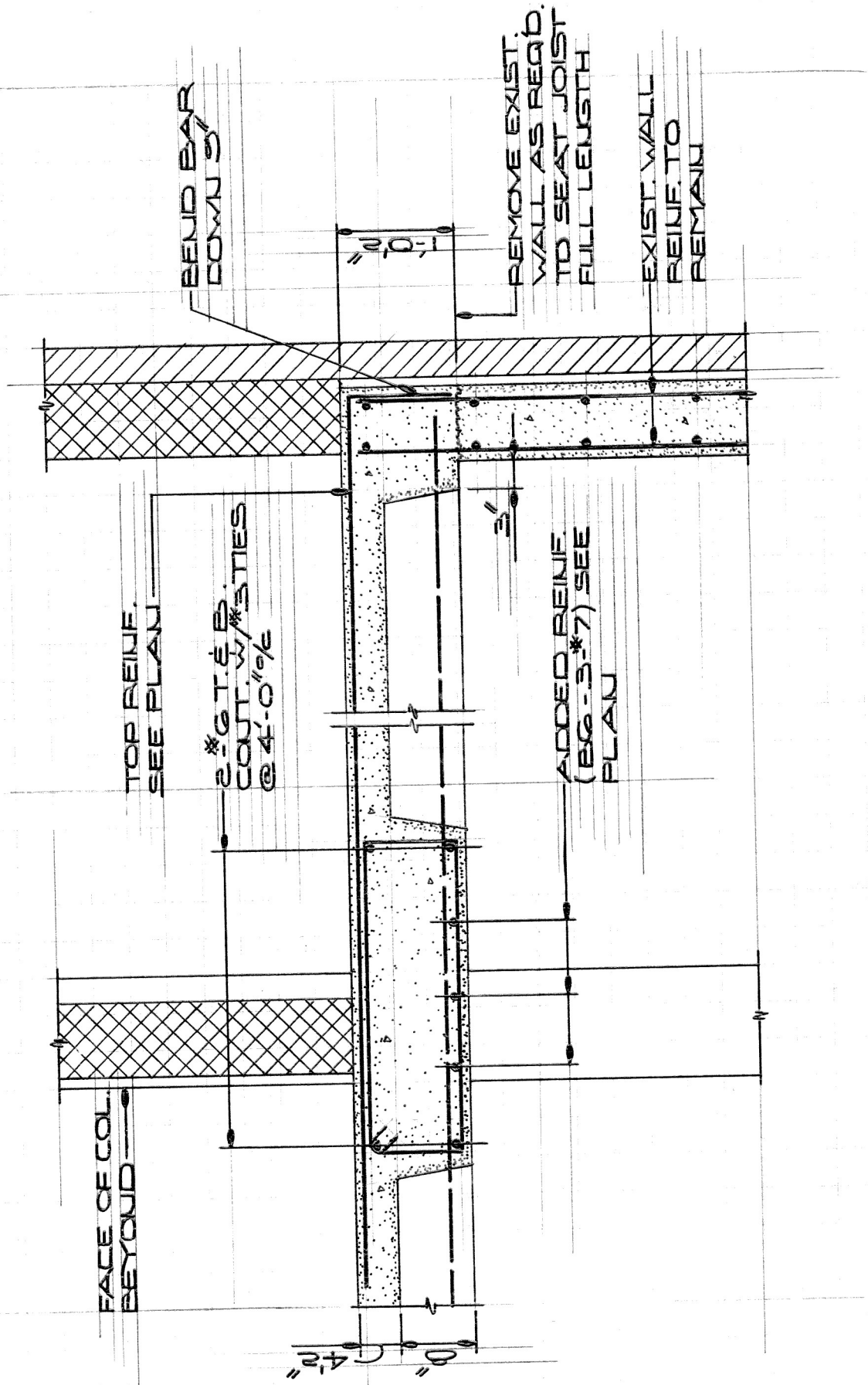
Archt CLARK, NEXSEN & OWEN

Date 10/24/68

fc \_\_\_\_\_

Project ALT. & ADD. TO Subject SECTION  
GUGGENHEIMER HOSP.

Des. By D.L.I.



TOP REINF.  
SEE PLAN

2 #6 T. & B.  
COURT. W/ #3 TIES  
@ 4'-0" o/c

ADDED REINF.  
(B6-3\*7) SEE  
PLAN

BEND BAR  
DOWN 5/8"

REMOVE EXIST.  
WALL AS REQ'D.  
TO SEAT JOIST  
FULL LENGTH

EXIST. WALL  
REINF. TO  
REMAIN

SECTION  
SCALE: 3/4" = 1'-0"

R-2