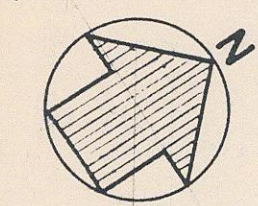
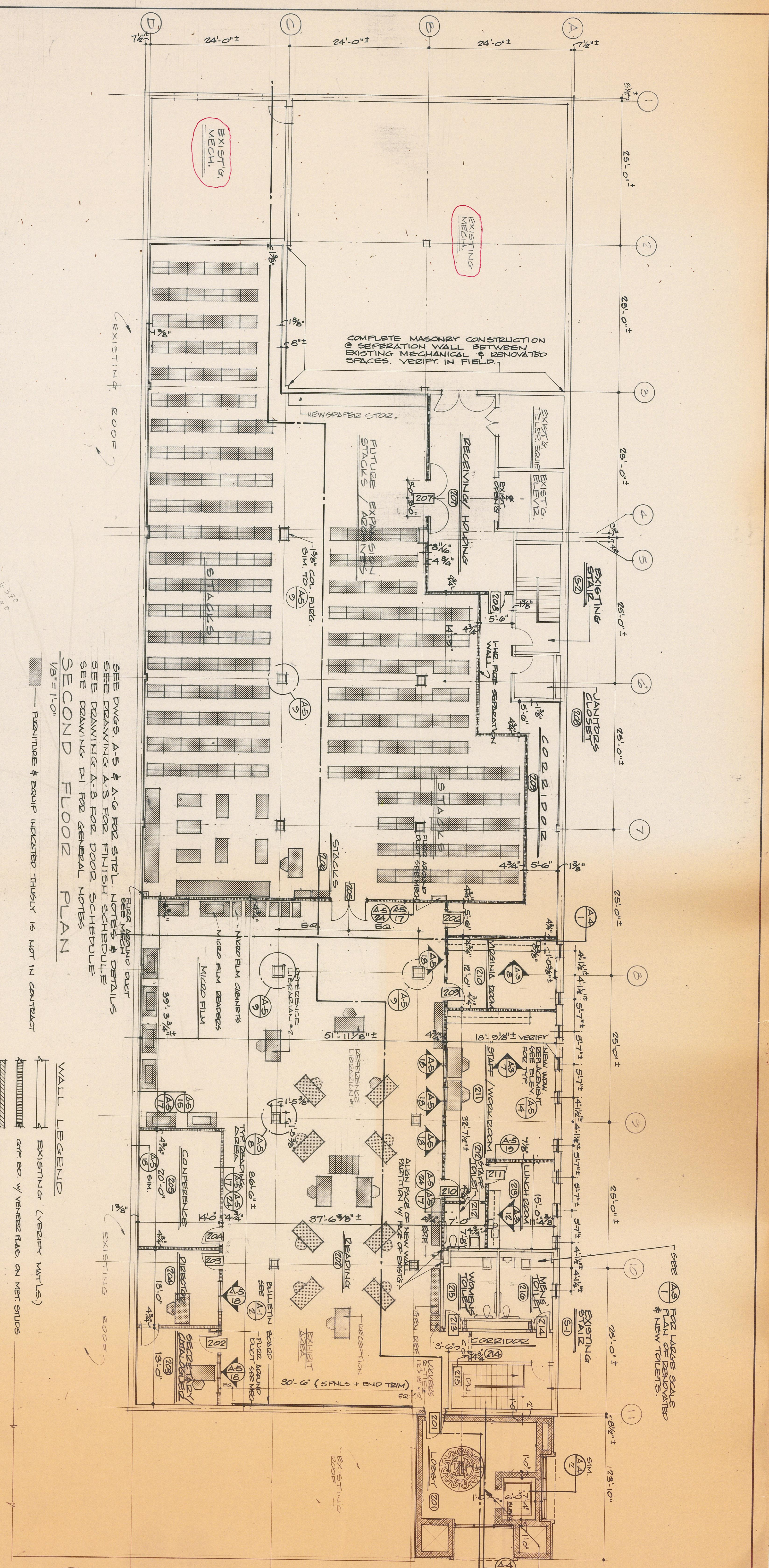
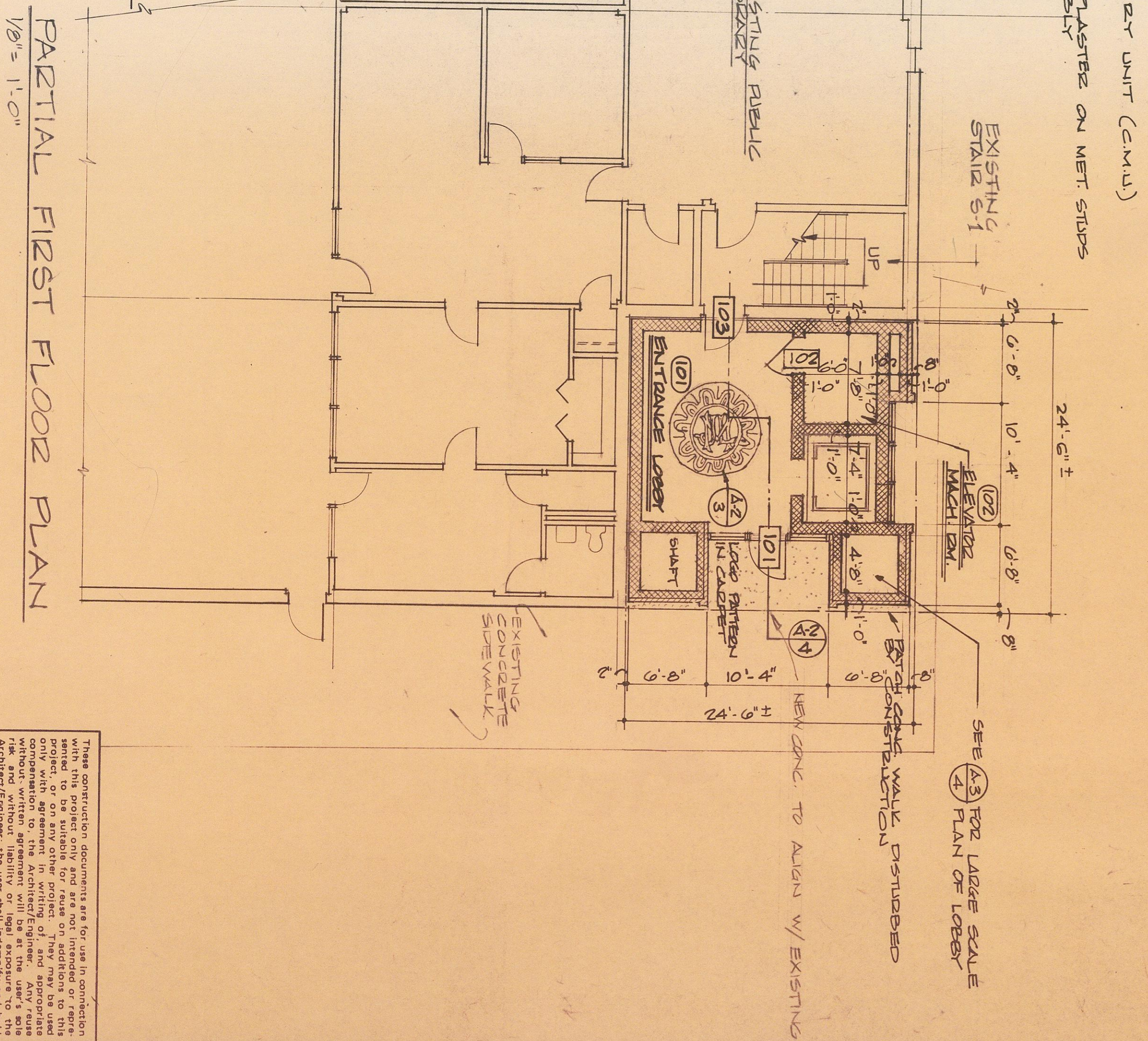
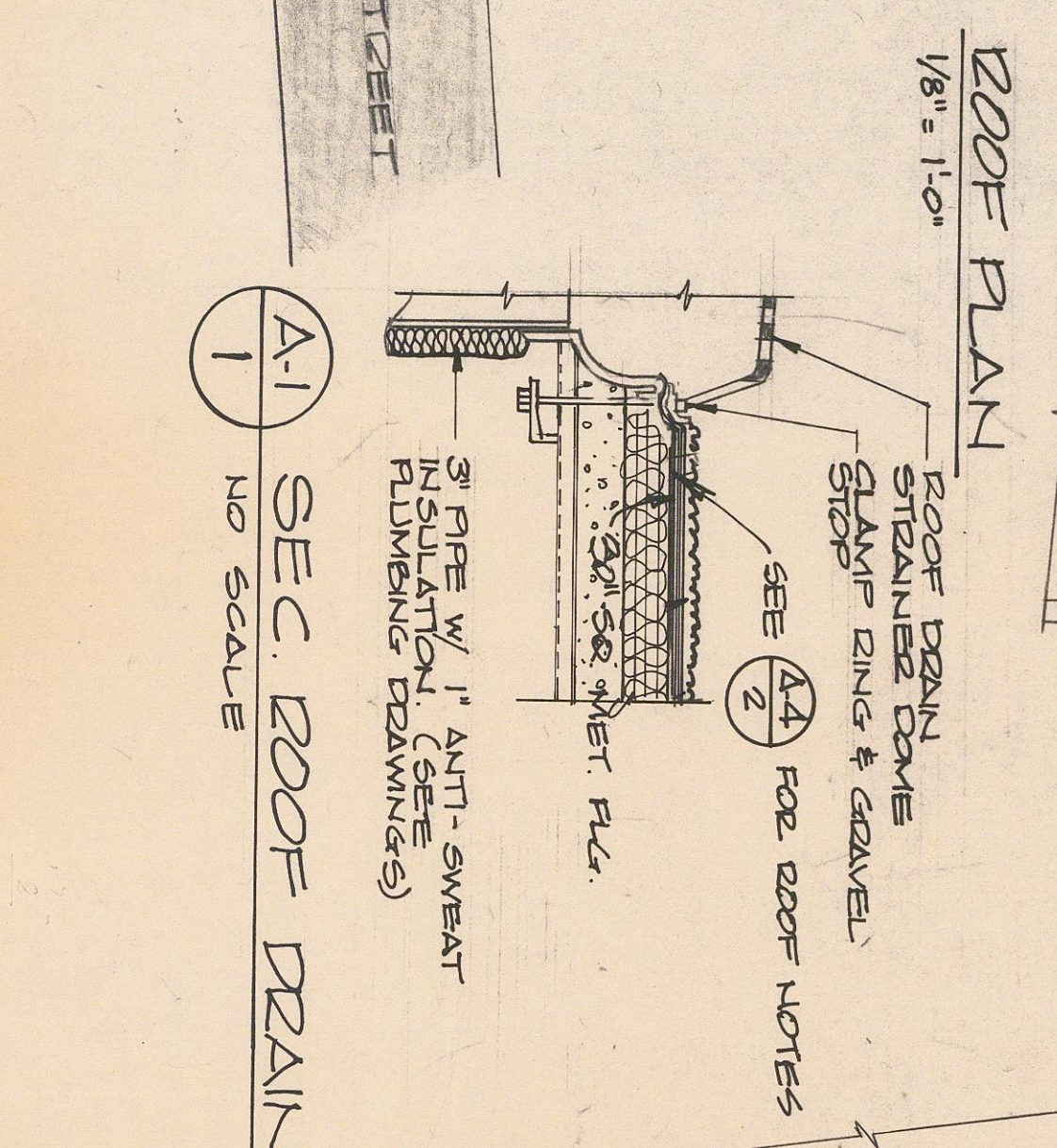
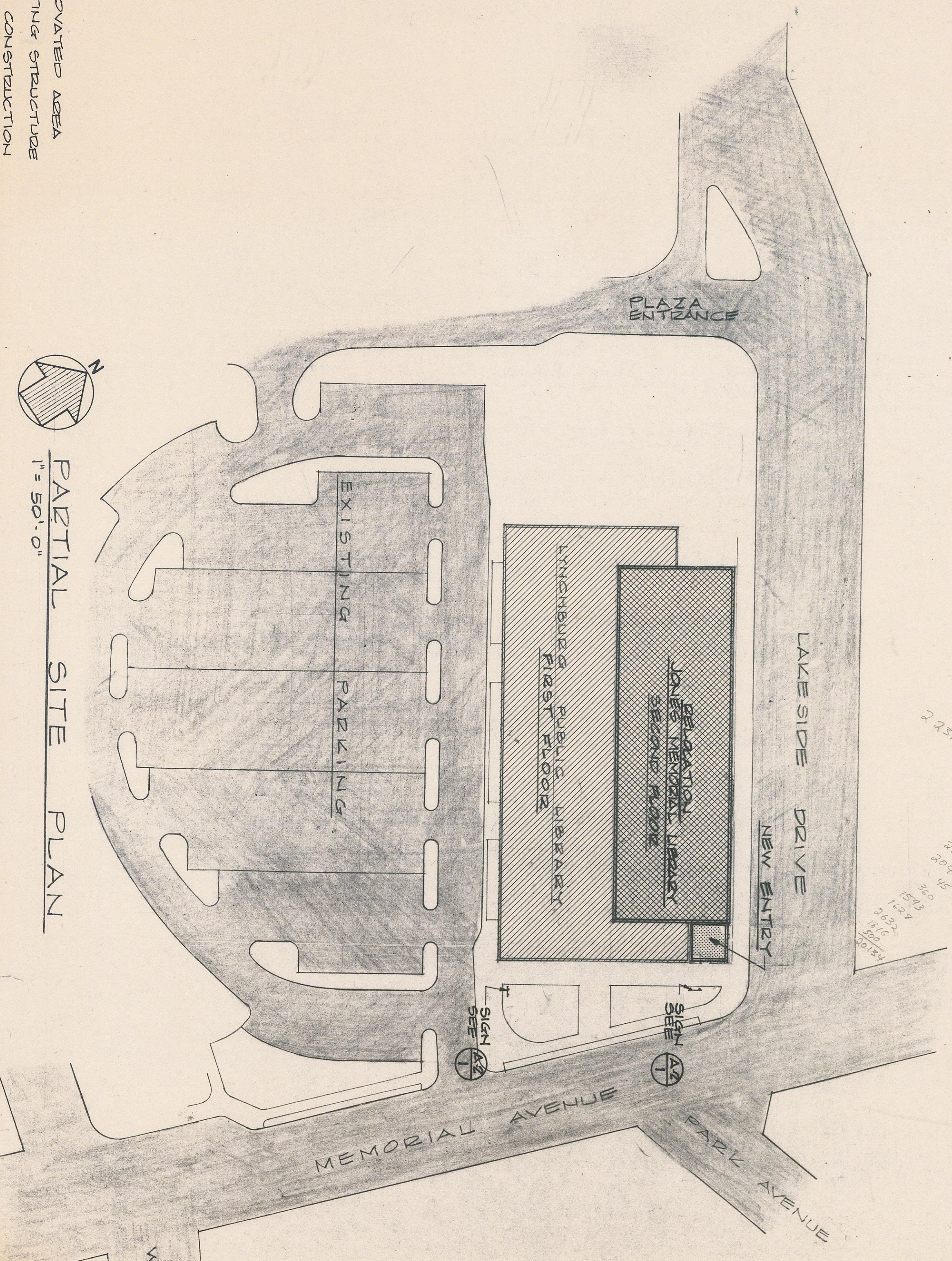


- LEGEND**
- RENOVATED AREA
 - EXISTING STRUCTURE
 - NEW CONSTRUCTION



PARTIAL SITE PLAN
1" = 50'-0"

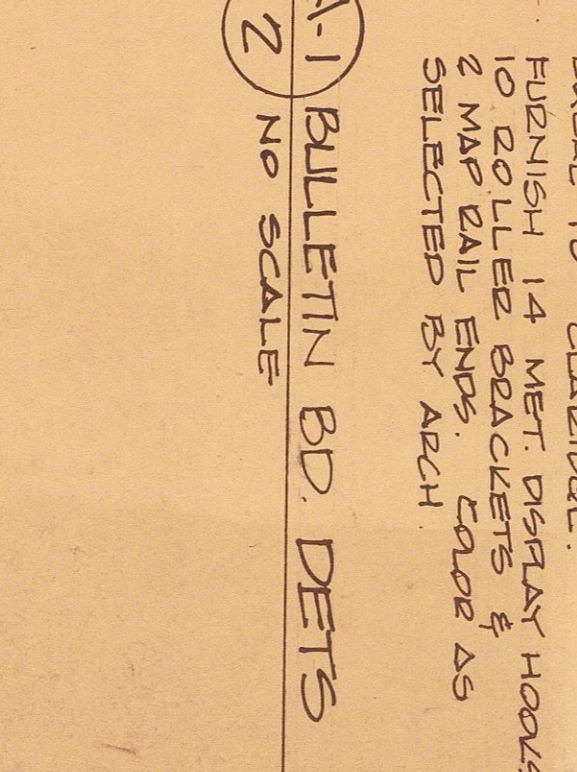


SEE DWGS. A-5 & A-6 FOR STEEL NOTES & DETAILS
SEE DRAWING A-3 FOR FINISH SCHEDULE
SEE DRAWING D-1 FOR GENERAL NOTES

SECOND FLOOR PLAN
1/8" = 1'-0"

— FURNITURE & EQUIP INDICATED THUSLY IS NOT IN CONTACT

- WALL LEGEND**
- EXISTING (VESTER WALLS)
 - GRTF BR. W/ VENEER FILL ON NET STIPS
 - BRICK ON CONCRETE MASONRY UNIT (CMU)
 - CONCRETE MASONRY UNIT (CMU)
 - GRTF BR. W/ VENEER PLASTER ON NET STIPS
 - L.H.C. RATED ASSEMBLY



PARTIAL SITE PLAN

DATE	10/20/11
SCALE	1" = 50'-0"
DRAWING	A-1
DESIGNED BY	JDO
CHECKED BY	JDO
DATE	10/20/11
SCALE	1" = 50'-0"
DRAWING	A-1

RELOCATION OF THE JONES MEMORIAL LIBRARY
MEMORIAL AVE. & LAKESIDE DR.
LYNCHBURG, VIRGINIA

CLARK • NEXSEN • OWEN • BARBIERI • GIBSON
Architects • Engineers
A PROFESSIONAL CORPORATION
ALLIED ARTS BLDG., BOX 1156 • LYNCHBURG, VA. 24505 • 804/847-9081
740 DUKE STREET / SUITE 200 • NORFOLK, VA. 23510 • 804/622-2800