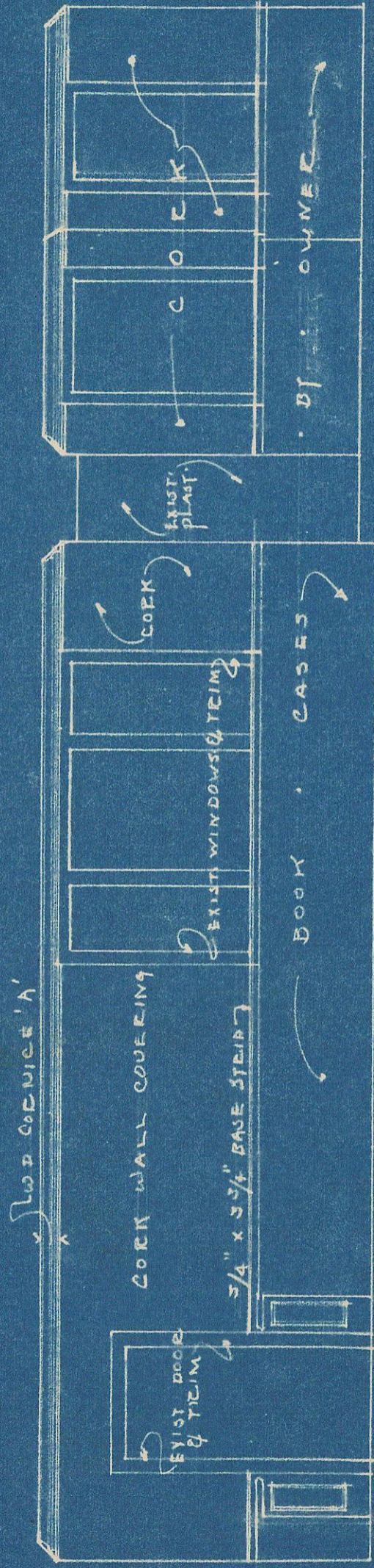
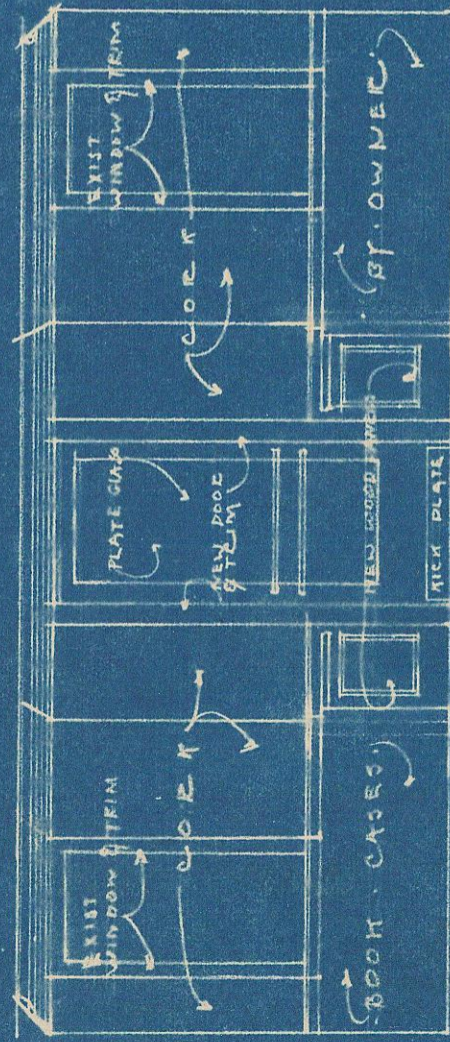


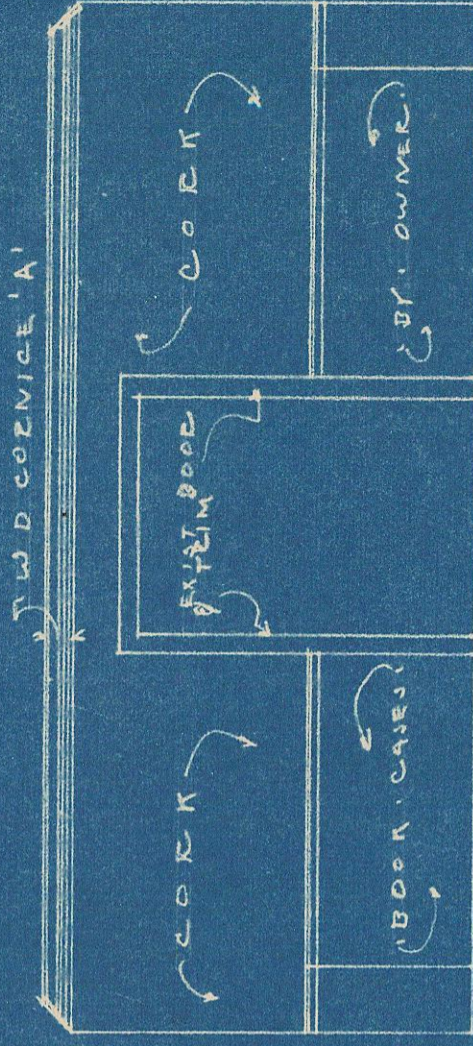
ELEV. TOWARD RIVER MON T. RUE.



ELEV. TOWARD FIVE MONT. AVE.



ELEV. TOWARD BRIDGE.



ELEV. TOWARD SERVICE HALL.

JONES MEMORIAL LIBRARY LYNCHBURG, VIRGINIA		TEVISION 4/5/35	SHEET No. R
J. EVERETTE FAUBER, JR. & TRUEHEART POSTON ARCHITECTS LYNCHBURG, VIRGINIA		INSIDE ELEVATIONS	
NOTE: CONTRACTOR SHALL VERIFY ALL DIMENSIONS AND TAKE OWN MEASUREMENTS AT JOB BEFORE COMMENCING WORK. CONTRACTOR SHALL BE HELD RESPONSIBLE FOR STRENGTH OF ALL CONSTRUCTION.		SCALE 1/4" = 1'-0"	MADE BY JLF
COMM. No. #54			CHECKED BY HTP