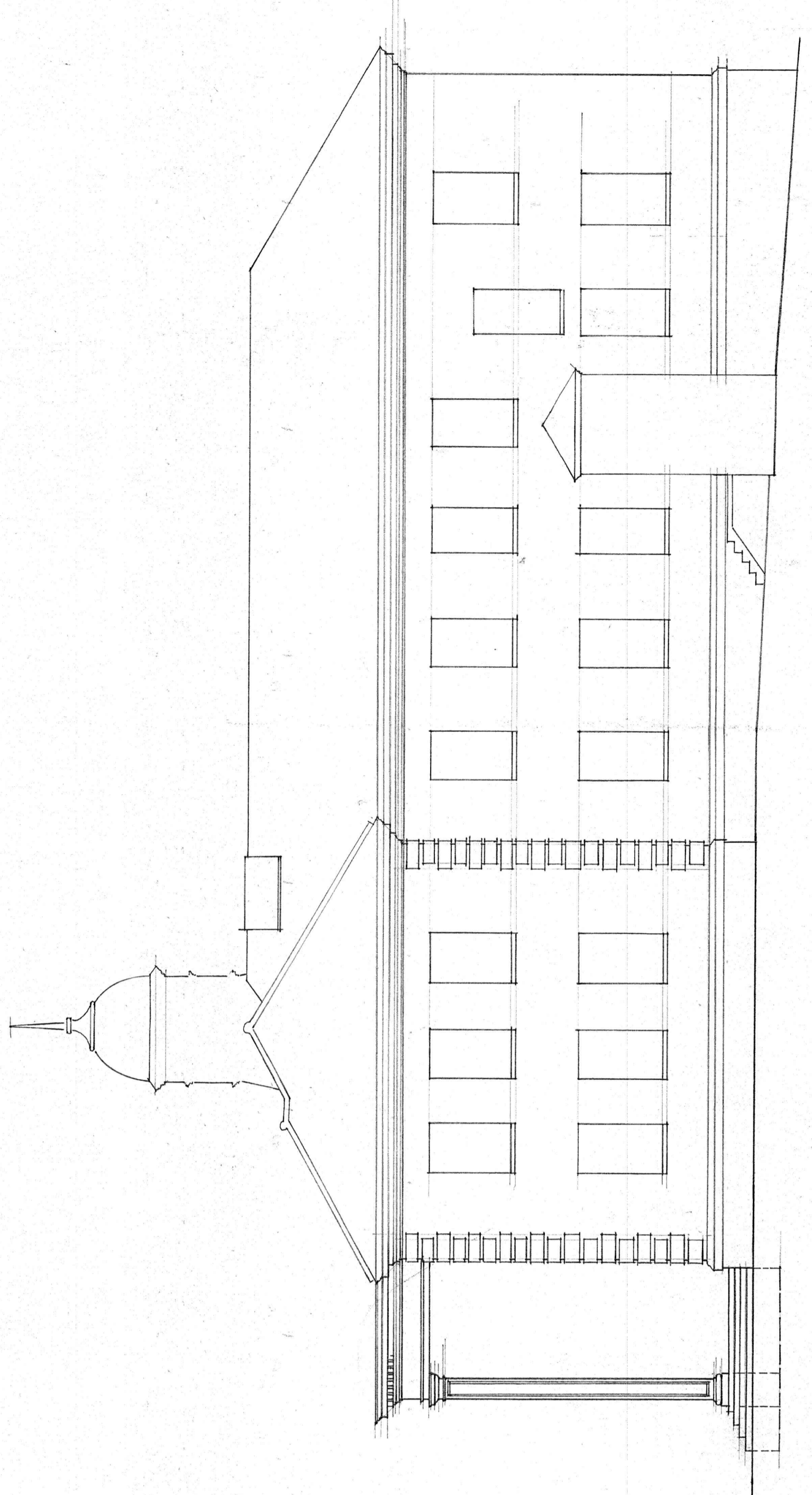
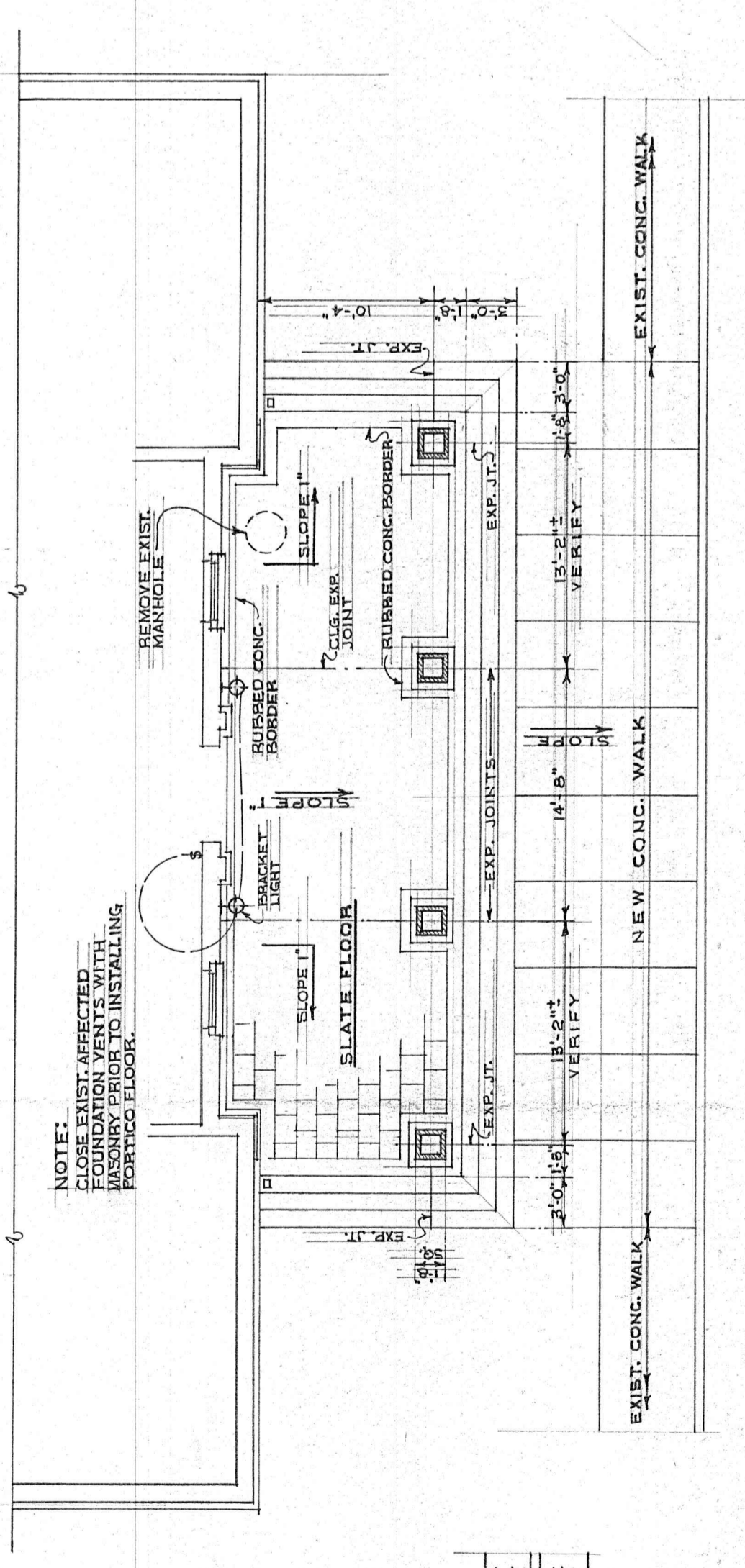


**SOUTH ELEVATION**  
 1/8" = 1'-0"

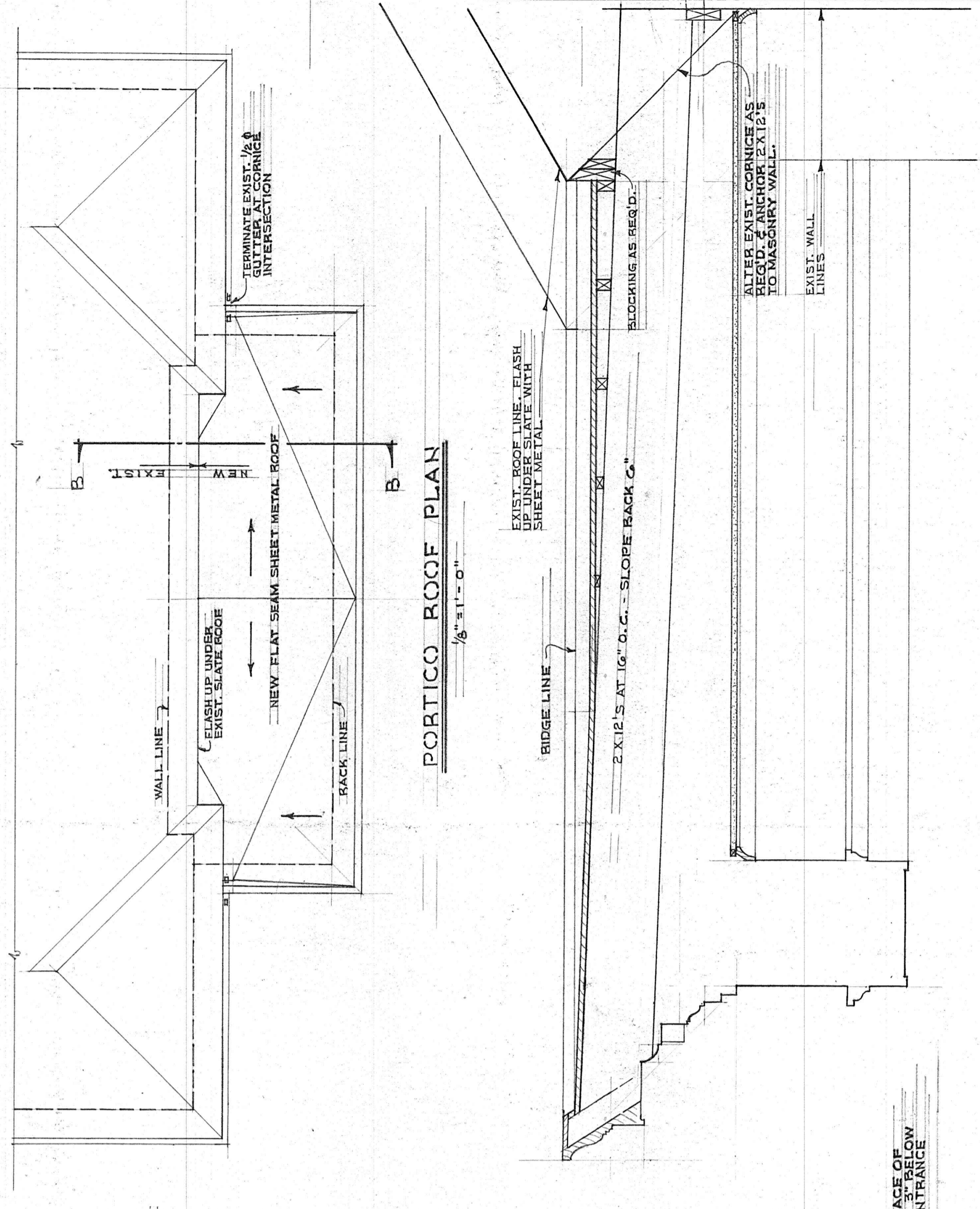
NOTE: PORTICO BACK TO 45'-4" WIDTH TO COVER WIDER SPACING.



**EAST ELEVATION**  
 1/8" = 1'-0"

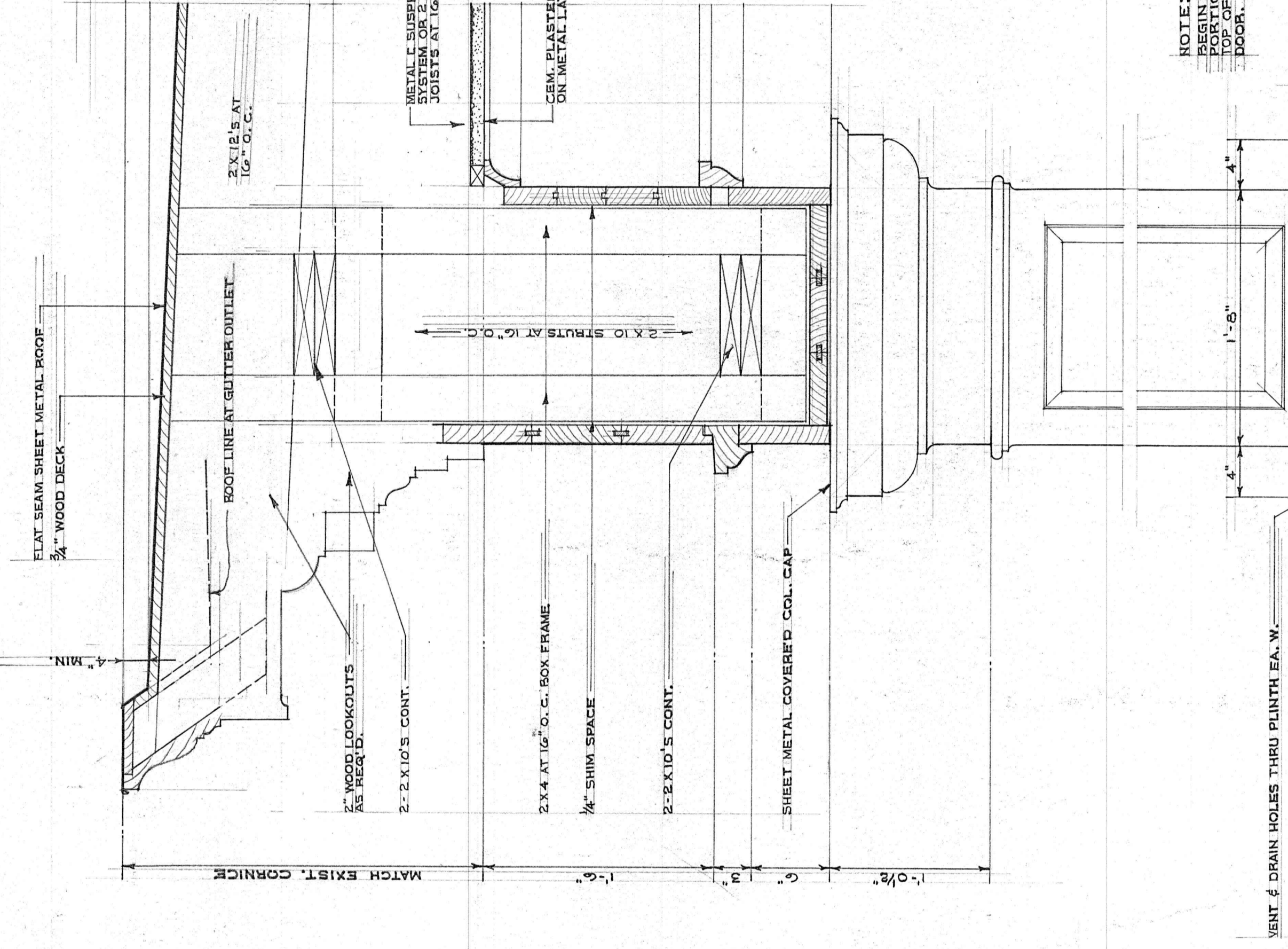
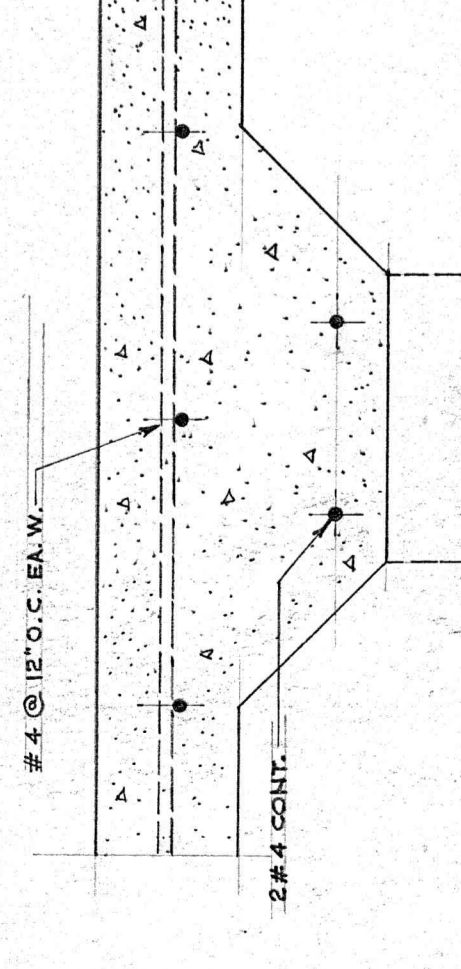


**PORTICO FLOOR PLAN**  
 1/8" = 1'-0"



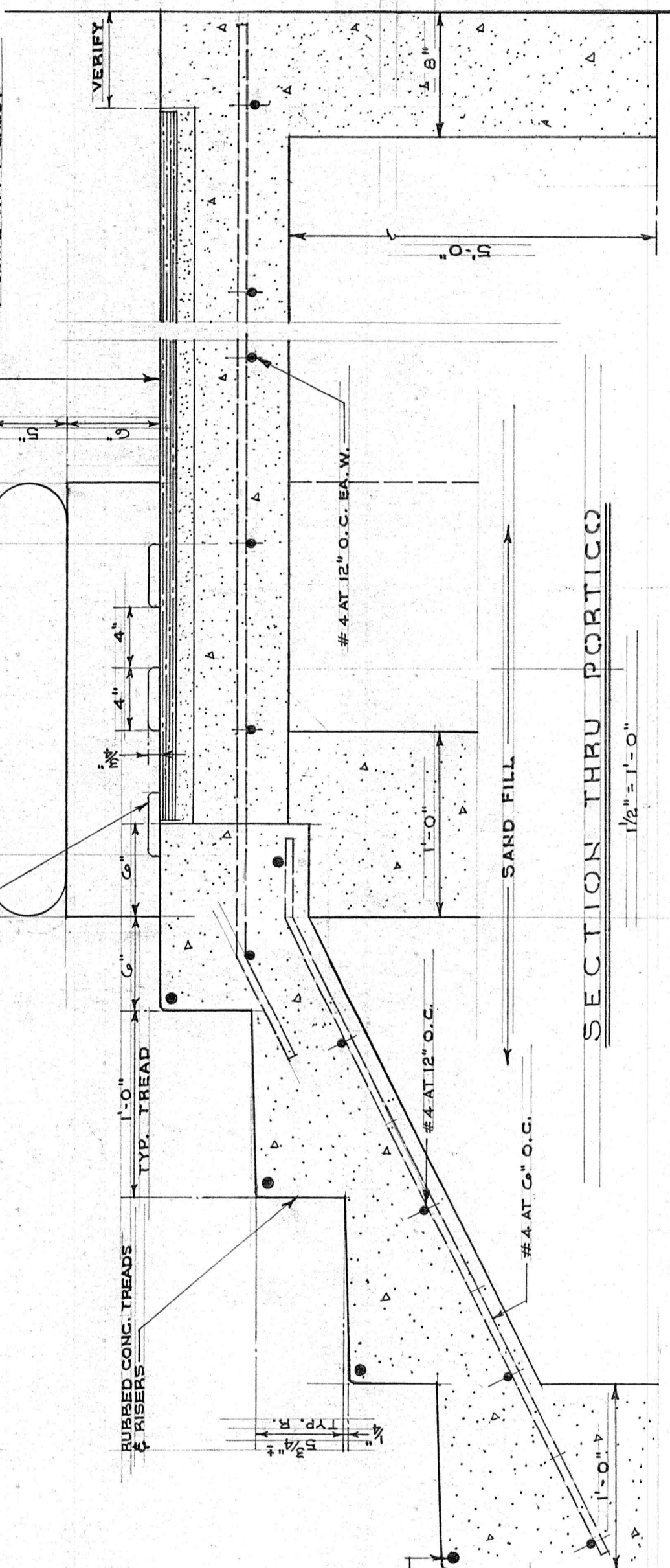
**PORTICO ROOF PLAN**  
 1/8" = 1'-0"

**SECTION A-A**  
 1/2" = 1'-0"



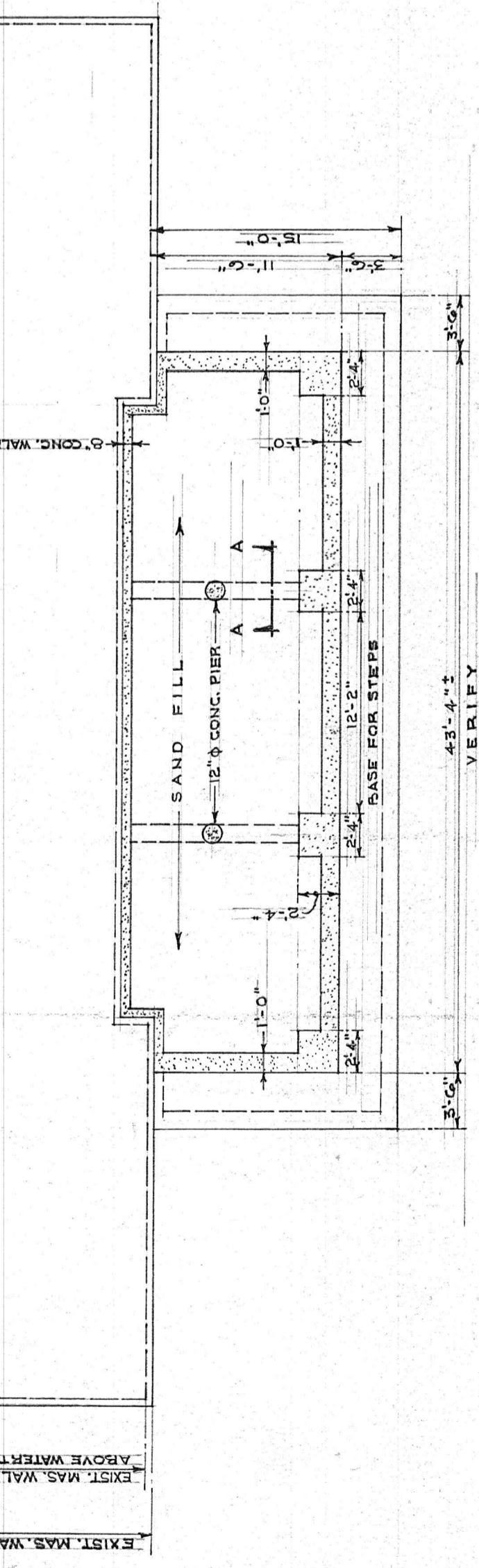
**SECTION B-B**  
 3/4" = 1'-0"

NOTE: VERIFY EXIST. PORTICO FLOOR JOISTS BELOW SILL AT ENTRANCE.



**SECTION THRU PORTICO**  
 1/2" = 1'-0"

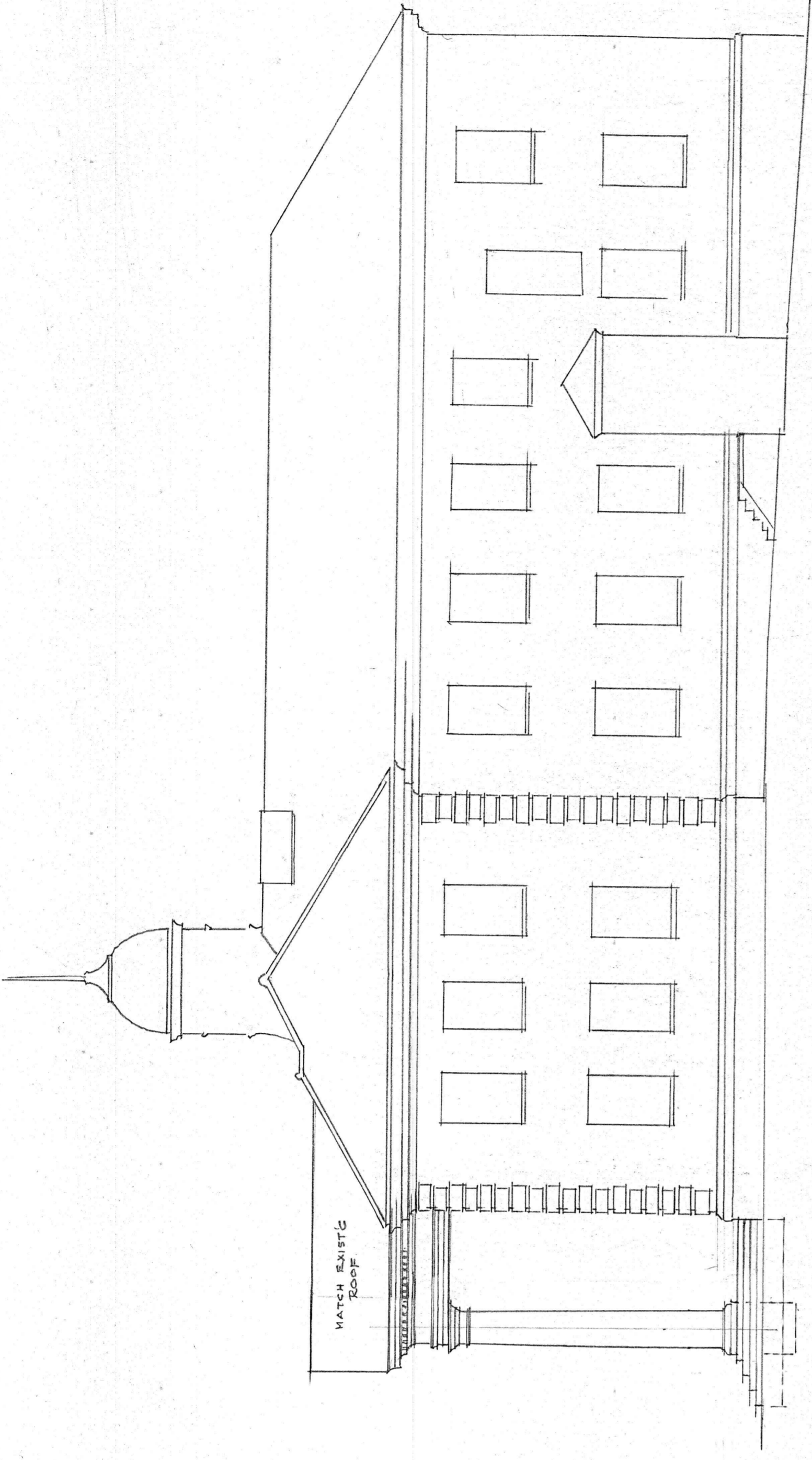
**PORTICO FOUNDATION PLAN**  
 1/8" = 1'-0"



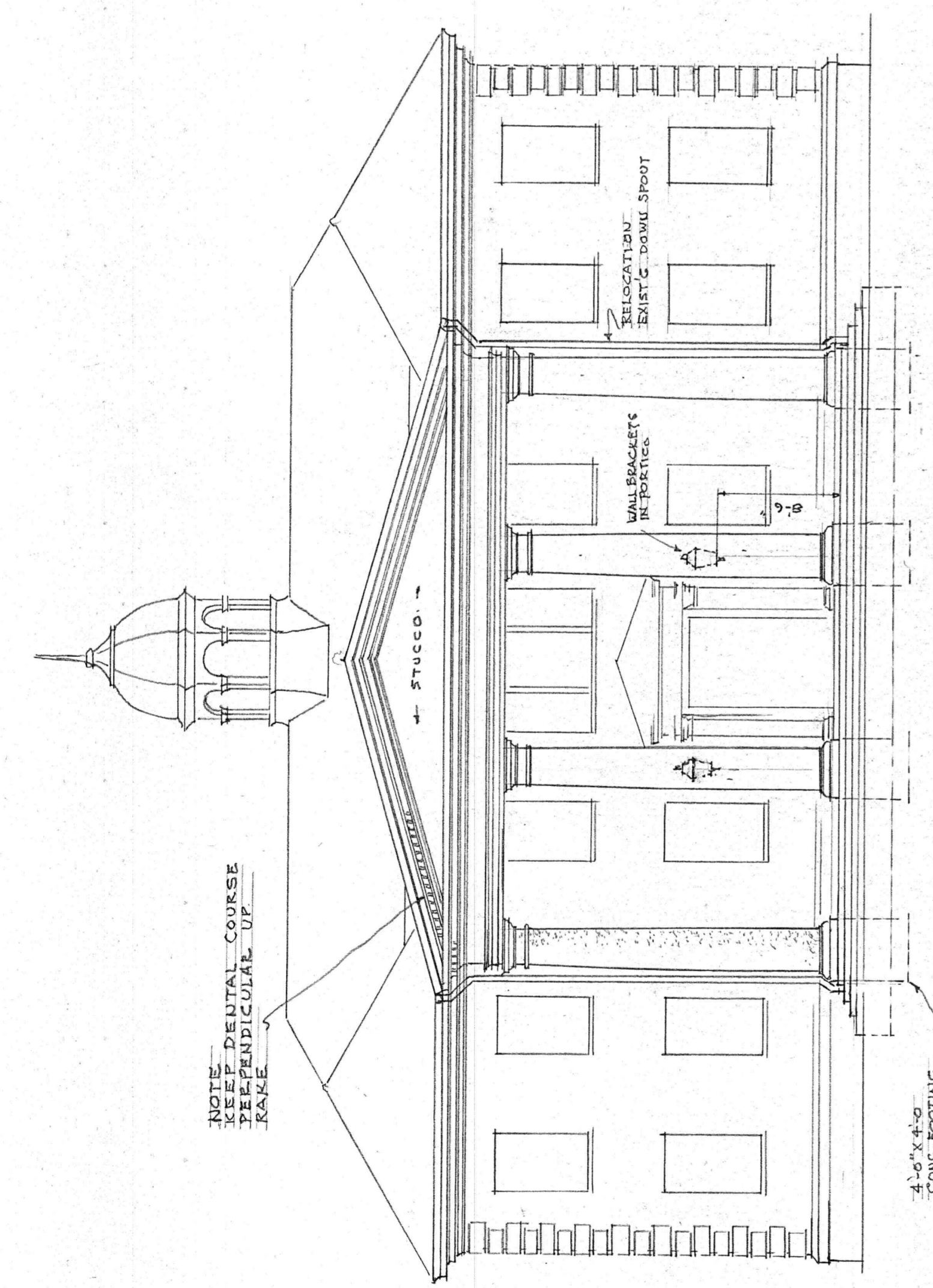
**CLARK, NEXSEN & OWEN - ARCHITECTS**  
 LYNCHBURG, VIRGINIA

**NEW PORTICO**  
 PRESBYTERIAN HOME,  
 LYNCHBURG, VA.

REVISED	DATE	SCALE	DRAWN BY	CHECKED	DWG. NO.
	4-28-09	AS NOTED	J. E. M.		



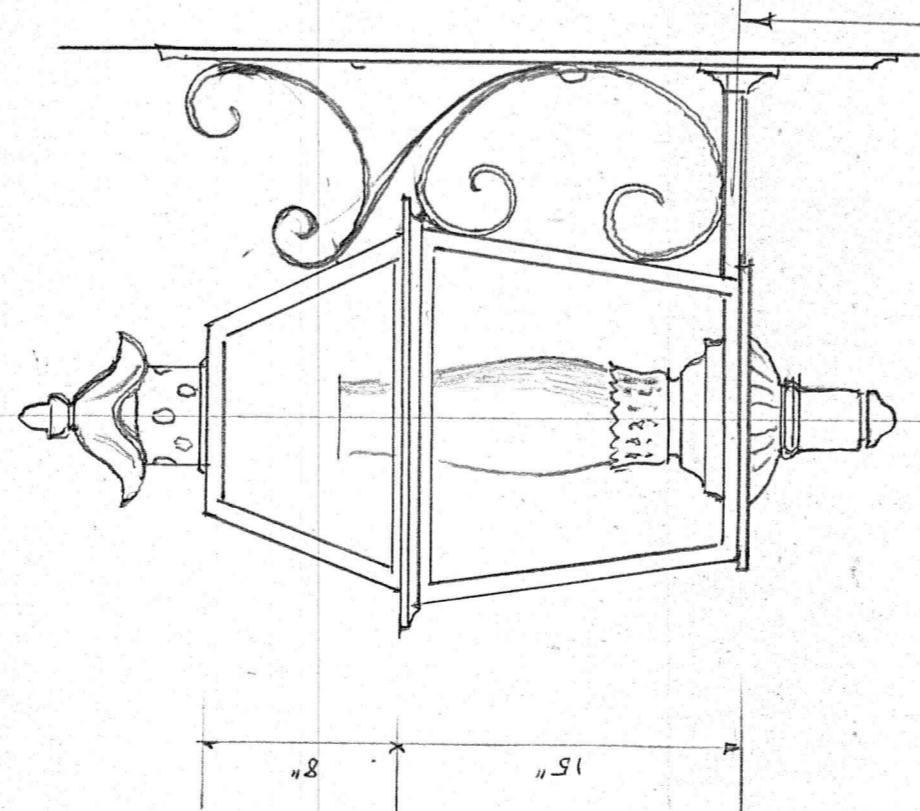
EAST ELEVATION  
1/8" = 1'-0"



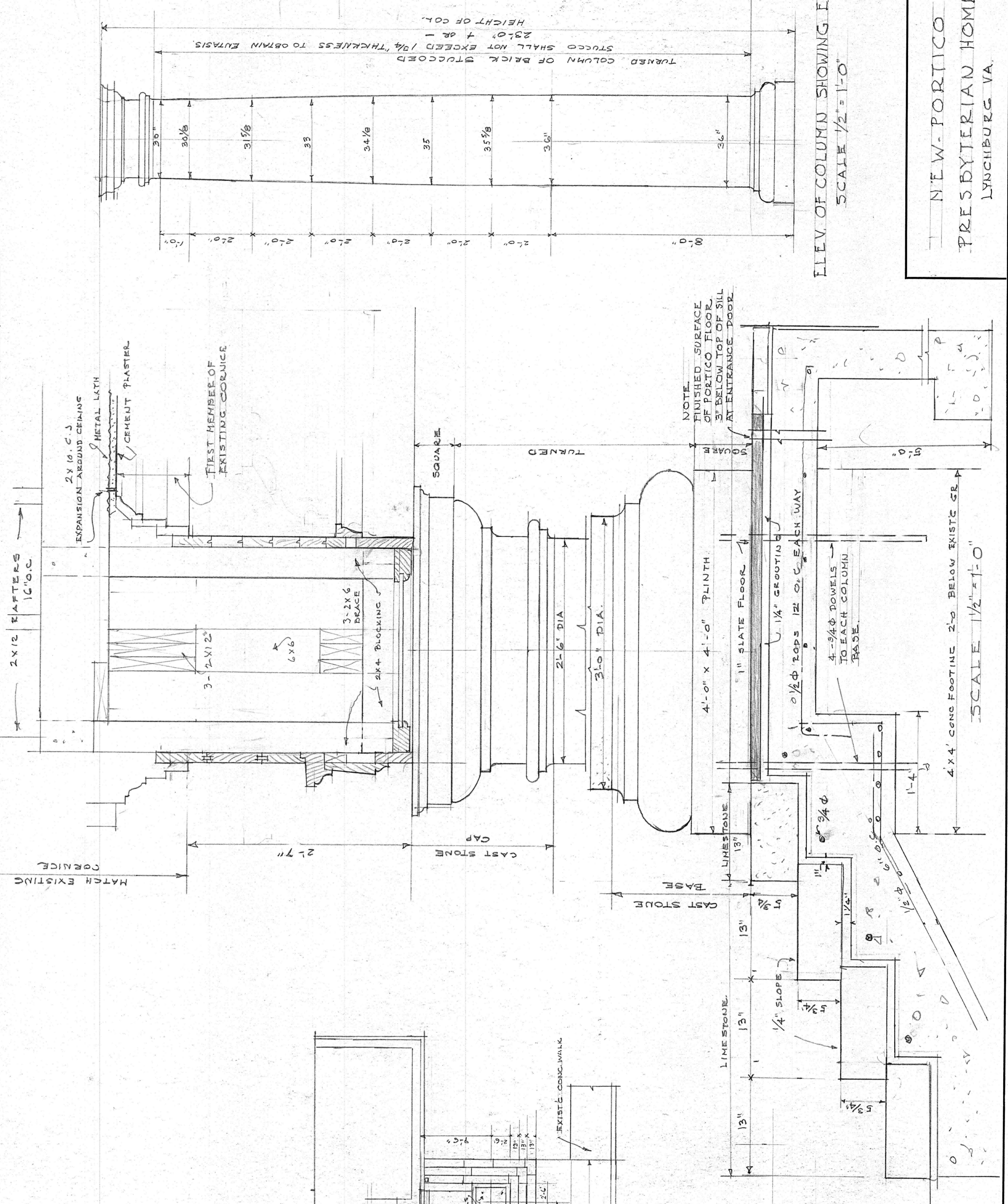
SOUTH ELEVATION  
1/8" = 1'-0"

NOTE:  
WIDTH OF PORTICO BACK 42'-7" FOR -  
EXISTING WALLS TO REMAIN.  
NEW METAL ASTEAGAL AND  
HARDWARE.

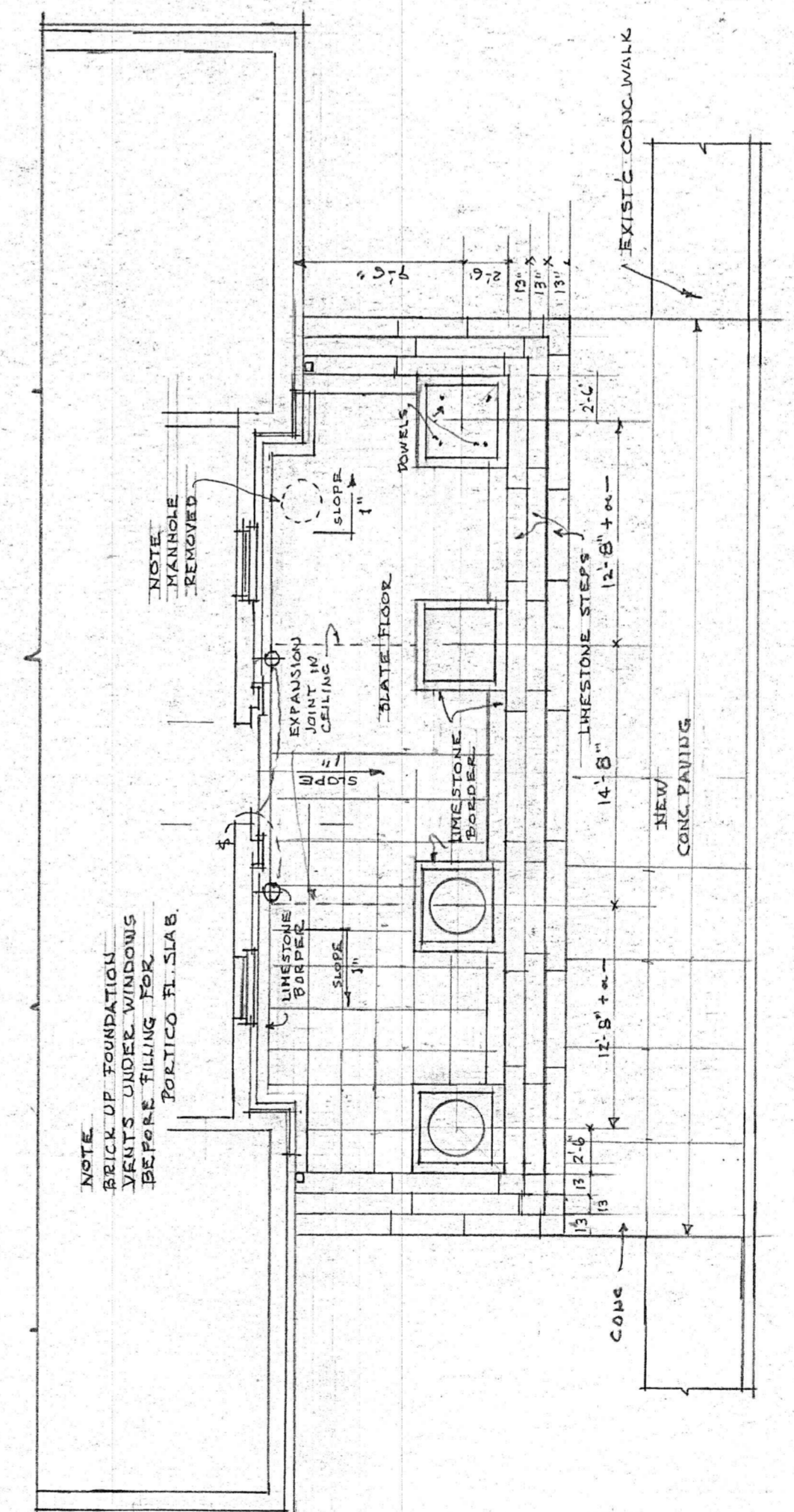
4'-0" x 4'-0" CONC. CORNERS  
UNDER COLS



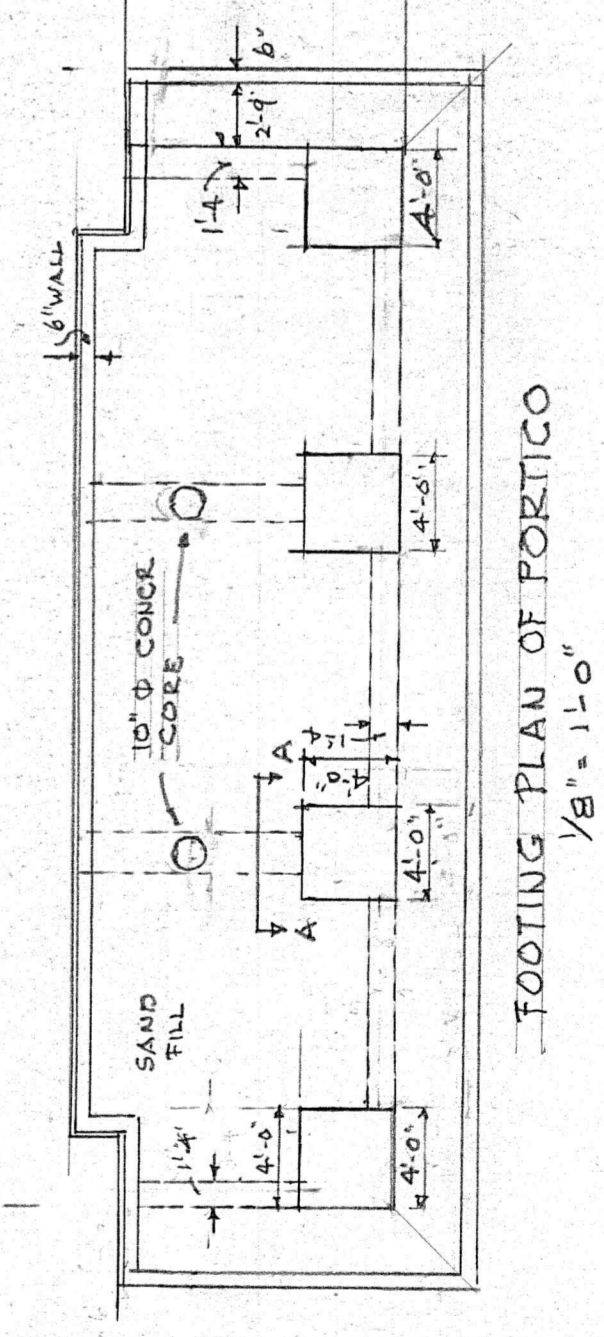
PORTICO WALL BRACKETS  
1/2" = 1'-0"



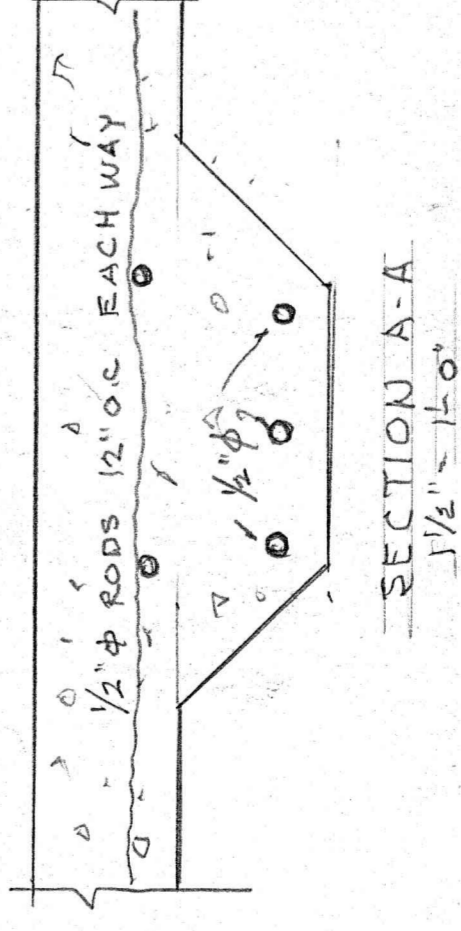
ELEV. OF COLUMN SHOWING ENTASIS  
SCALE 1/2" = 1'-0"



PLAN OF PORTICO  
1/8" = 1'-0"



FOOTING PLAN OF PORTICO  
1/8" = 1'-0"

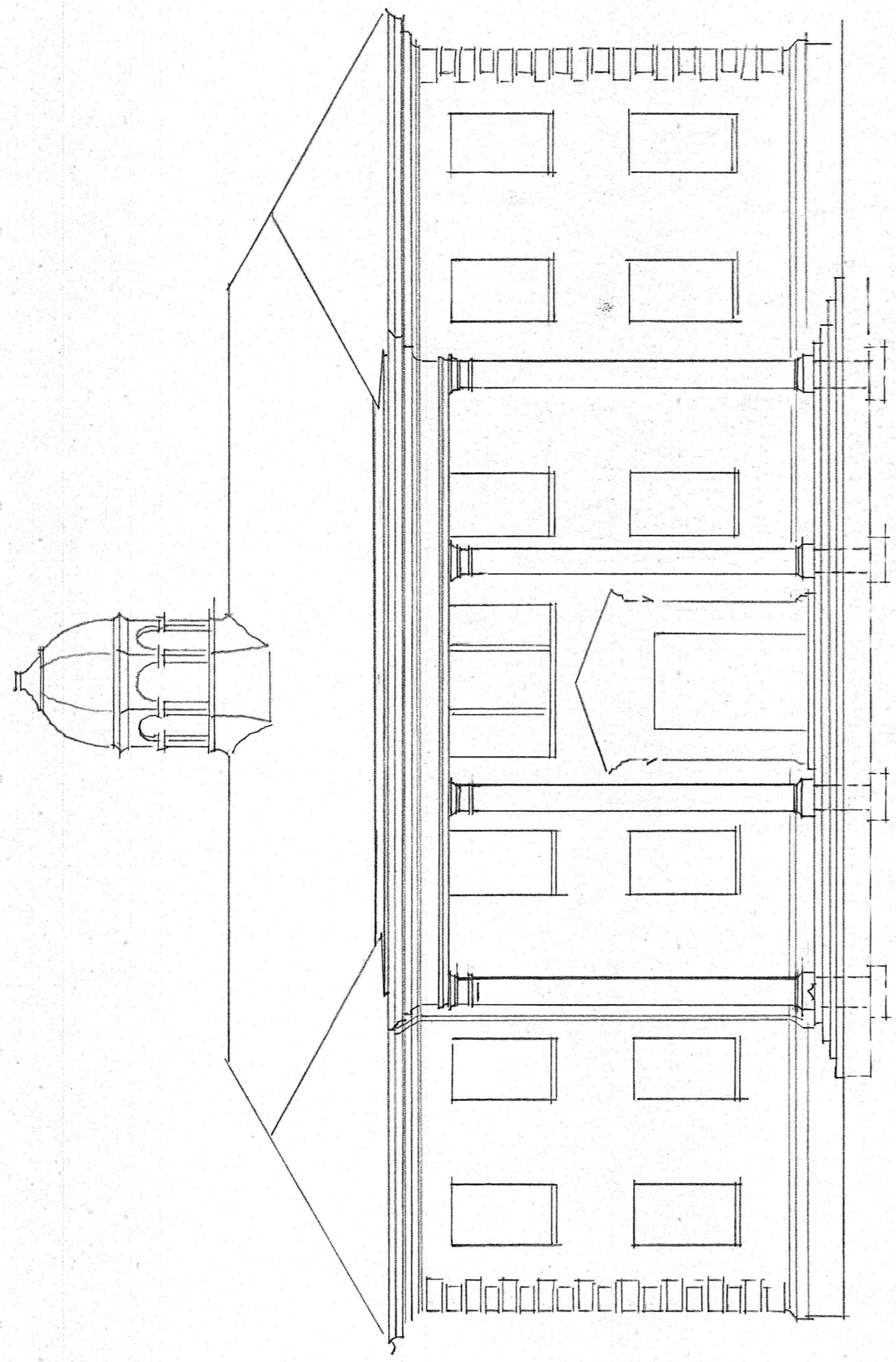


SECTION A-A  
1/2" = 1'-0"

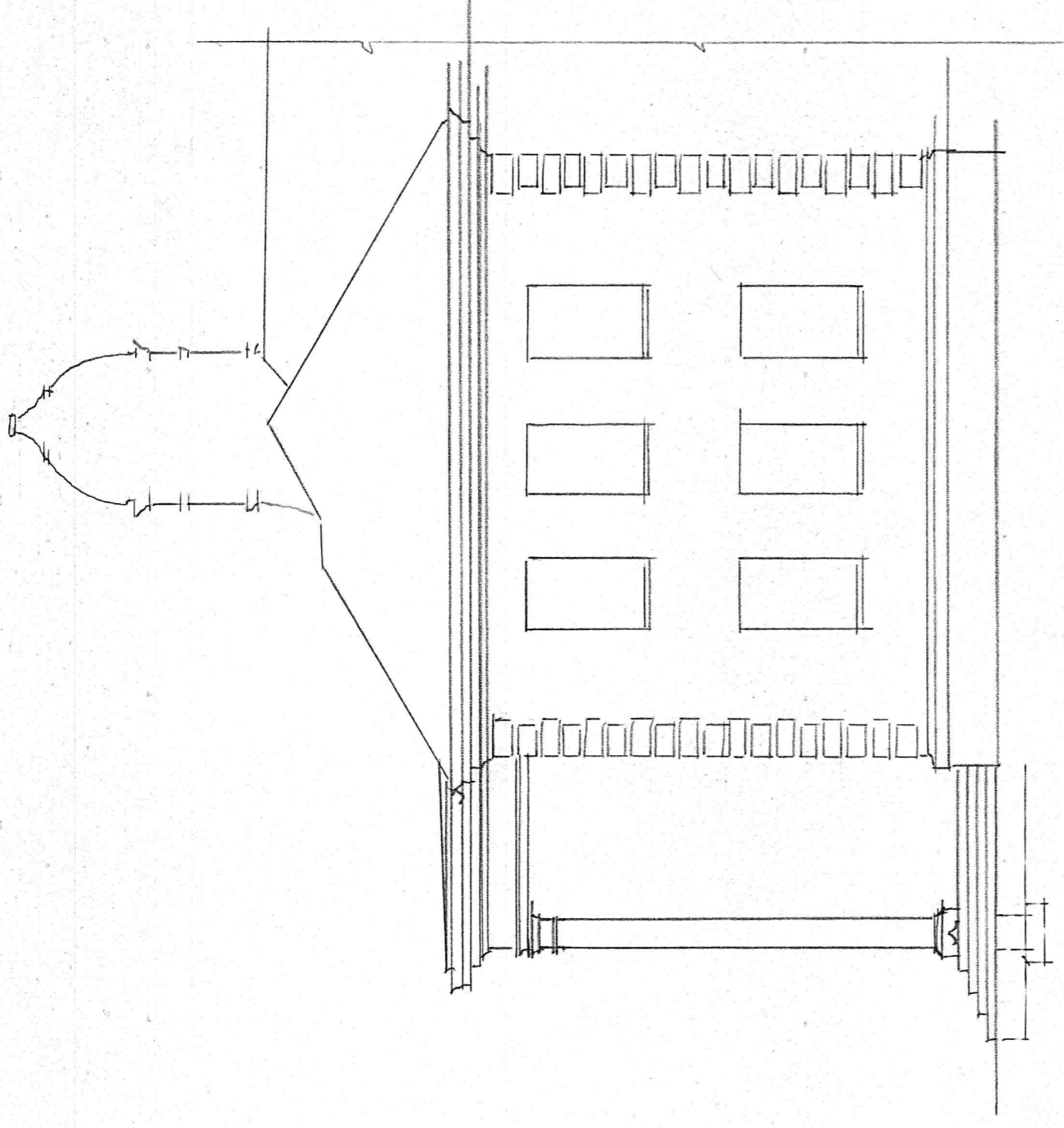
NEW PORTICO  
PRESBYTERIAN HOME  
LYNCHBURG VA.

CLARK, MEYSEN & OWEN - ARCHITECTS  
LYNCHBURG, VIRGINIA

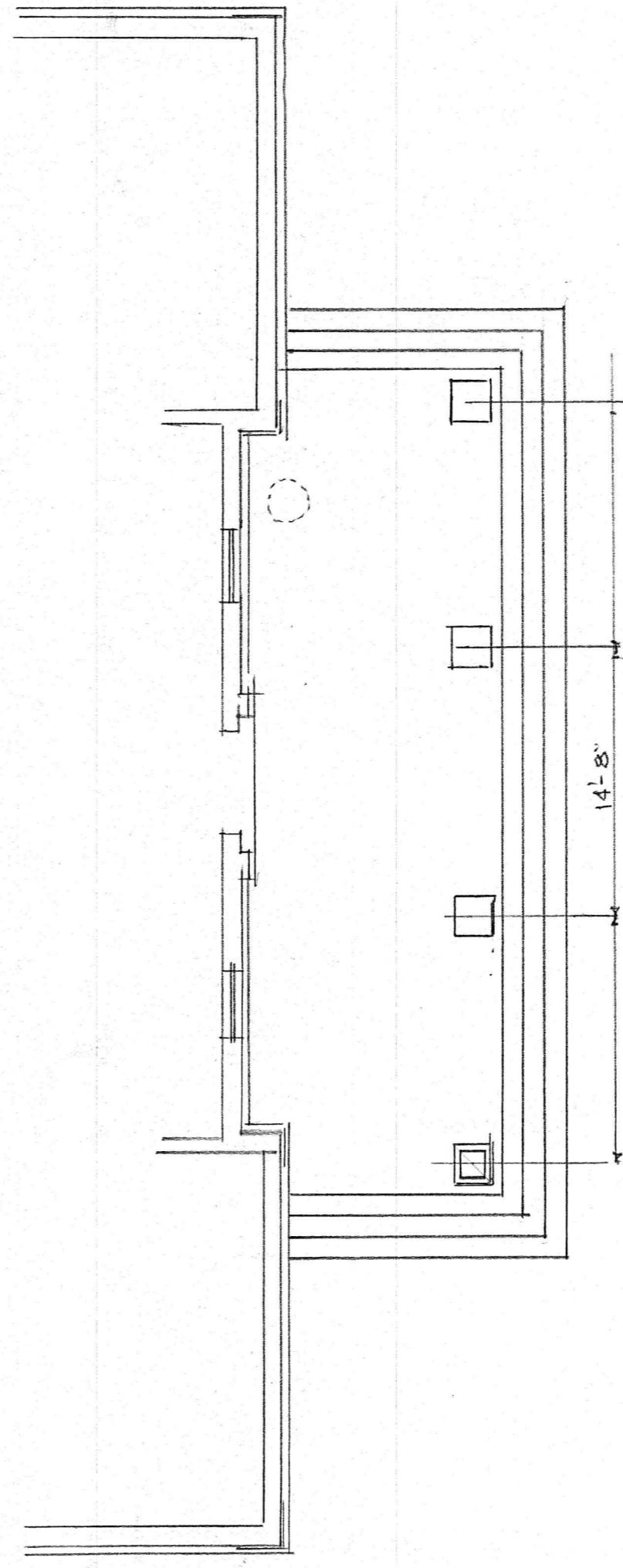
REVISED	DATE	SCALE	DRAWN BY	CHECKED	APP. NO.
	3-27-27	1/8"	WJS		



SOUTH ELEVATION  
1/8" = 1'-0"



EAST ELEVATION  
1/8" = 1'-0"



PLAN