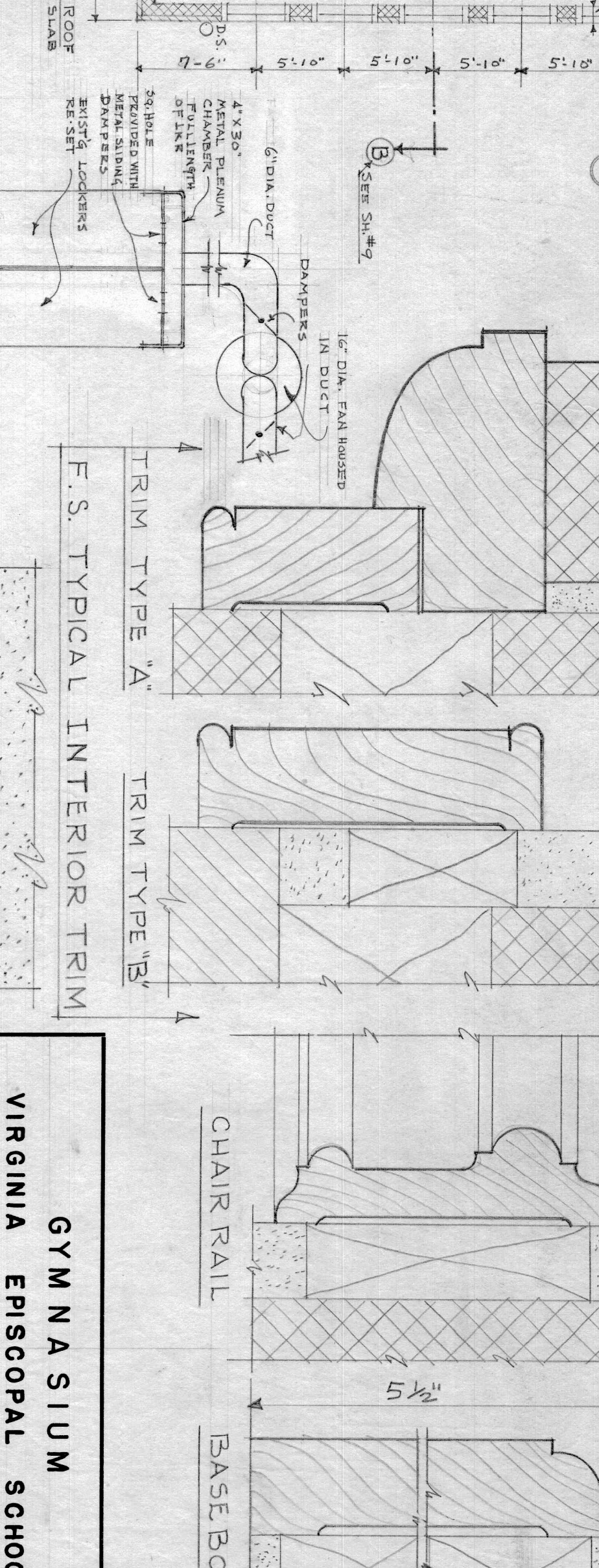
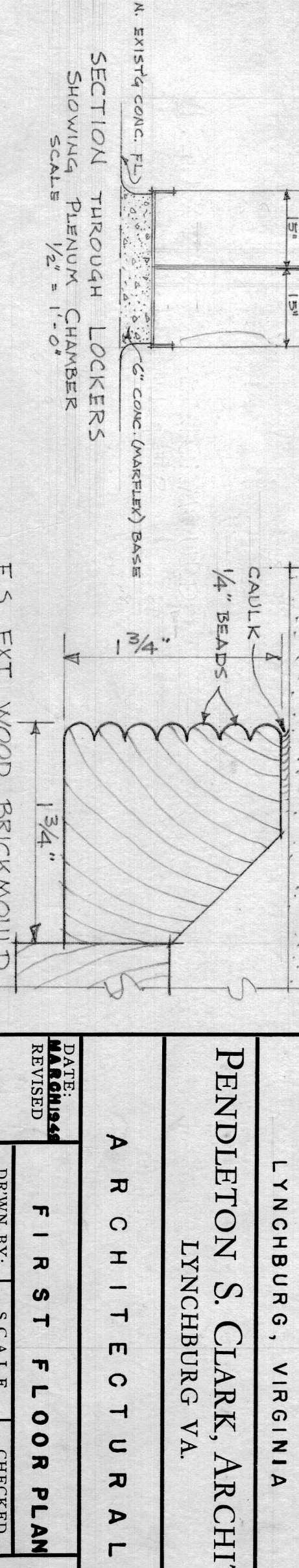


SCHEDULE OF AREA FINISHES

| AREA | FLOOR | WALLS | CEILING | WAINSCOT | WAINSCOT | BASE | TRIM | REMARKS |
|------|----------|----------|----------|----------|----------|----------|----------|---------|
| A | MARBLE | CONCRETE | CONCRETE | CONCRETE | CONCRETE | CONCRETE | CONCRETE | |
| B | CONCRETE | CONCRETE | CONCRETE | CONCRETE | CONCRETE | CONCRETE | CONCRETE | |
| C | CONCRETE | CONCRETE | CONCRETE | CONCRETE | CONCRETE | CONCRETE | CONCRETE | |
| D | CONCRETE | CONCRETE | CONCRETE | CONCRETE | CONCRETE | CONCRETE | CONCRETE | |
| E | CONCRETE | CONCRETE | CONCRETE | CONCRETE | CONCRETE | CONCRETE | CONCRETE | |
| F | CONCRETE | CONCRETE | CONCRETE | CONCRETE | CONCRETE | CONCRETE | CONCRETE | |
| G | CONCRETE | CONCRETE | CONCRETE | CONCRETE | CONCRETE | CONCRETE | CONCRETE | |
| H | CONCRETE | CONCRETE | CONCRETE | CONCRETE | CONCRETE | CONCRETE | CONCRETE | |
| I | CONCRETE | CONCRETE | CONCRETE | CONCRETE | CONCRETE | CONCRETE | CONCRETE | |
| J | CONCRETE | CONCRETE | CONCRETE | CONCRETE | CONCRETE | CONCRETE | CONCRETE | |
| K | CONCRETE | CONCRETE | CONCRETE | CONCRETE | CONCRETE | CONCRETE | CONCRETE | |

SCHEDULE OF DOORS (ELEVATIONS ON SHEET 3)

| NUMBER | DIMENSIONS | TYPE | MATERIAL | GLAZING | FRAMES | LINTELS | REMARKS |
|--------|-----------------------------|--|----------|---------|--------|---------|-----------------|
| 1 | 2'-0" x 6'-8 1/2" x 1 3/4" | GLAZED | WOOD | D.S.B. | WOOD | TRANSOM | |
| 2 | 3'-4" x 6'-8 1/2" x 1 3/4" | " | " | " | " | " | |
| 3 | 2'-10" x 6'-8 1/2" x 1 3/4" | HALF GLAZED | " | " | " | " | |
| 4 | EXISTING | DOOR & SLIDE LIGHTS (REMOVED FROM SOUTH END) | " | " | " | " | REPAIR & SET |
| 5 | EXISTING | DOOR & TRANSOM (NECESSARY FOR RELOCATION SHALL BE DETERMINED ON SHEET 3) | WOOD | " | " | " | DOOR W/ TRANSOM |
| 6 | 3'-0" x 6'-8 1/2" x 1 3/4" | 2 PANEL | " | " | " | " | |
| 7 | 2'-10" x 6'-8 1/2" x 1 3/4" | " | " | " | " | " | |
| 8 | 3'-0" x 6'-8 1/2" x 1 3/4" | " | " | " | " | " | |
| 9 | 3'-0" x 6'-8 1/2" x 1 3/4" | " | " | " | " | " | |
| 10 | 2'-10" x 6'-8 1/2" x 1 3/4" | 2 PANEL | " | " | " | " | |
| 11 | 2'-10" x 6'-8 1/2" x 1 3/4" | " | " | " | " | " | |
| 12 | 2'-0" x 6'-8 1/2" x 1 3/4" | " | " | " | " | " | |
| 13 | 2'-0" x 6'-8 1/2" x 1 3/4" | " | " | " | " | " | |
| 14 | EXISTING | DOORS REPAIRED & RESET | " | " | " | " | |
| 15 | 3'-0" BRICK ARCH | 6'-0" FROM VESTIBULE FLOOR TO SPRING LINE | " | " | " | " | |
| 16 | EXISTING | DOORS REPAIRED AND LEFT IN PLACE | " | " | " | " | |



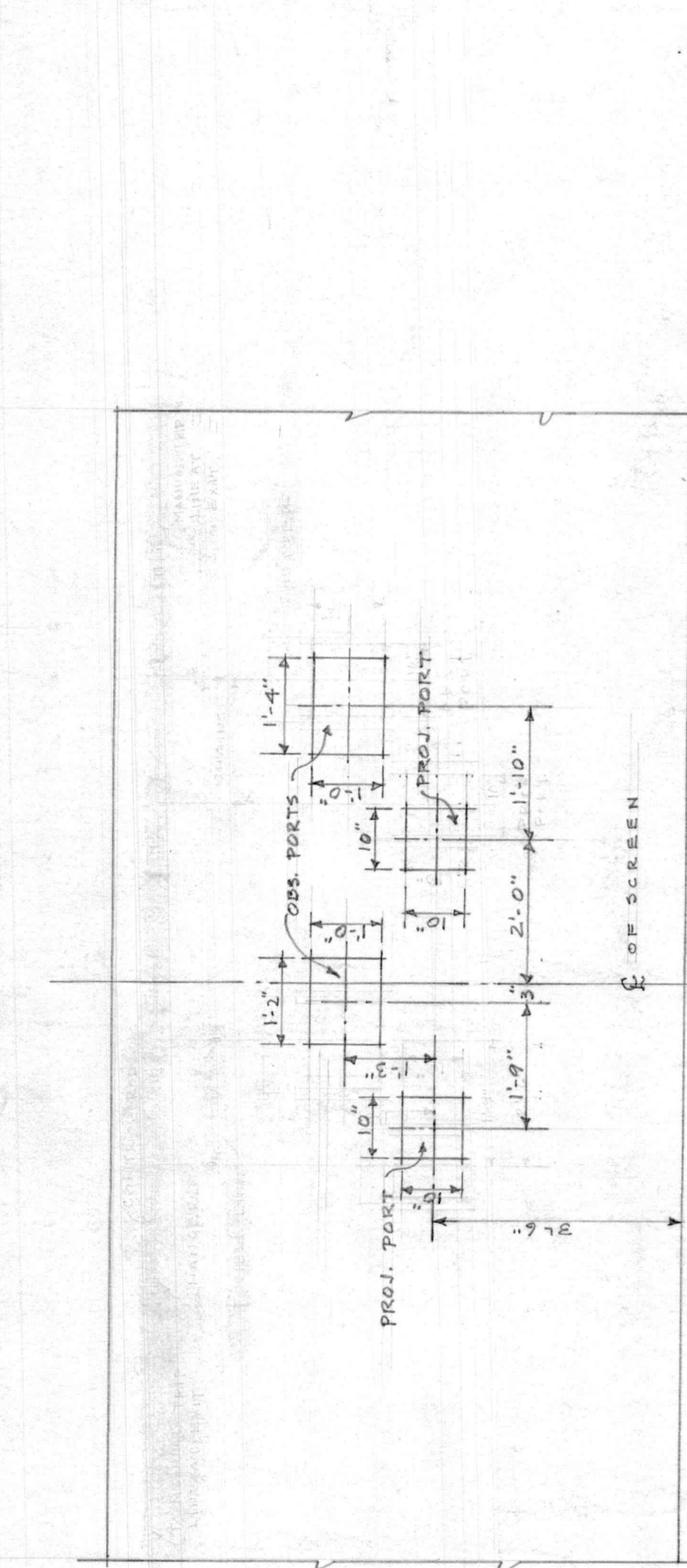
GYMNASIUM
 VIRGINIA EPISCOPAL SCHOOL
 LYNCHBURG, VIRGINIA
 PENDLETON S. CLARK, ARCHITECT
 LYNCHBURG VA.

ARCHITECTURAL
 FIRST FLOOR PLAN
 SCALE 1/8" = 1'-0"

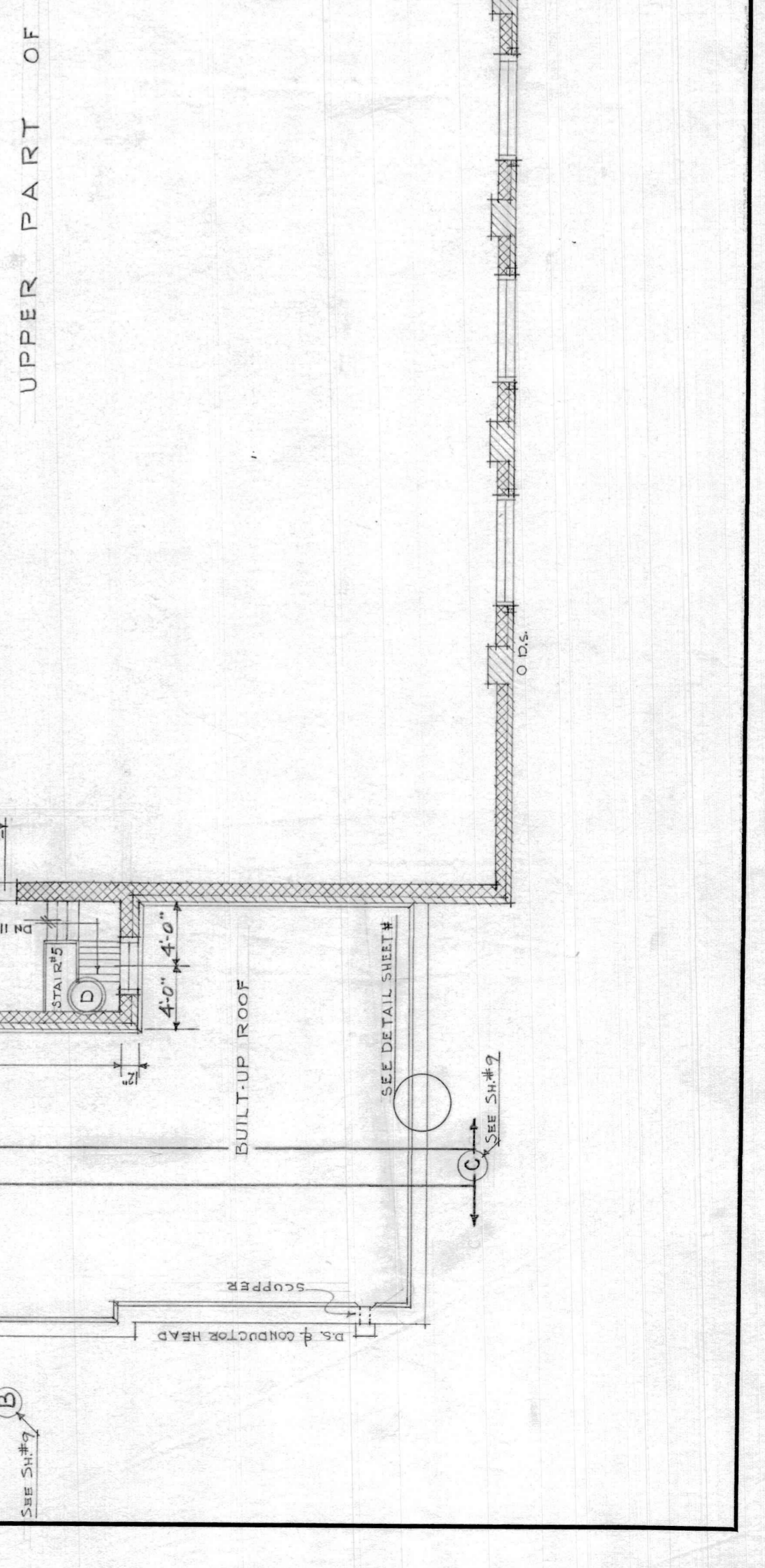
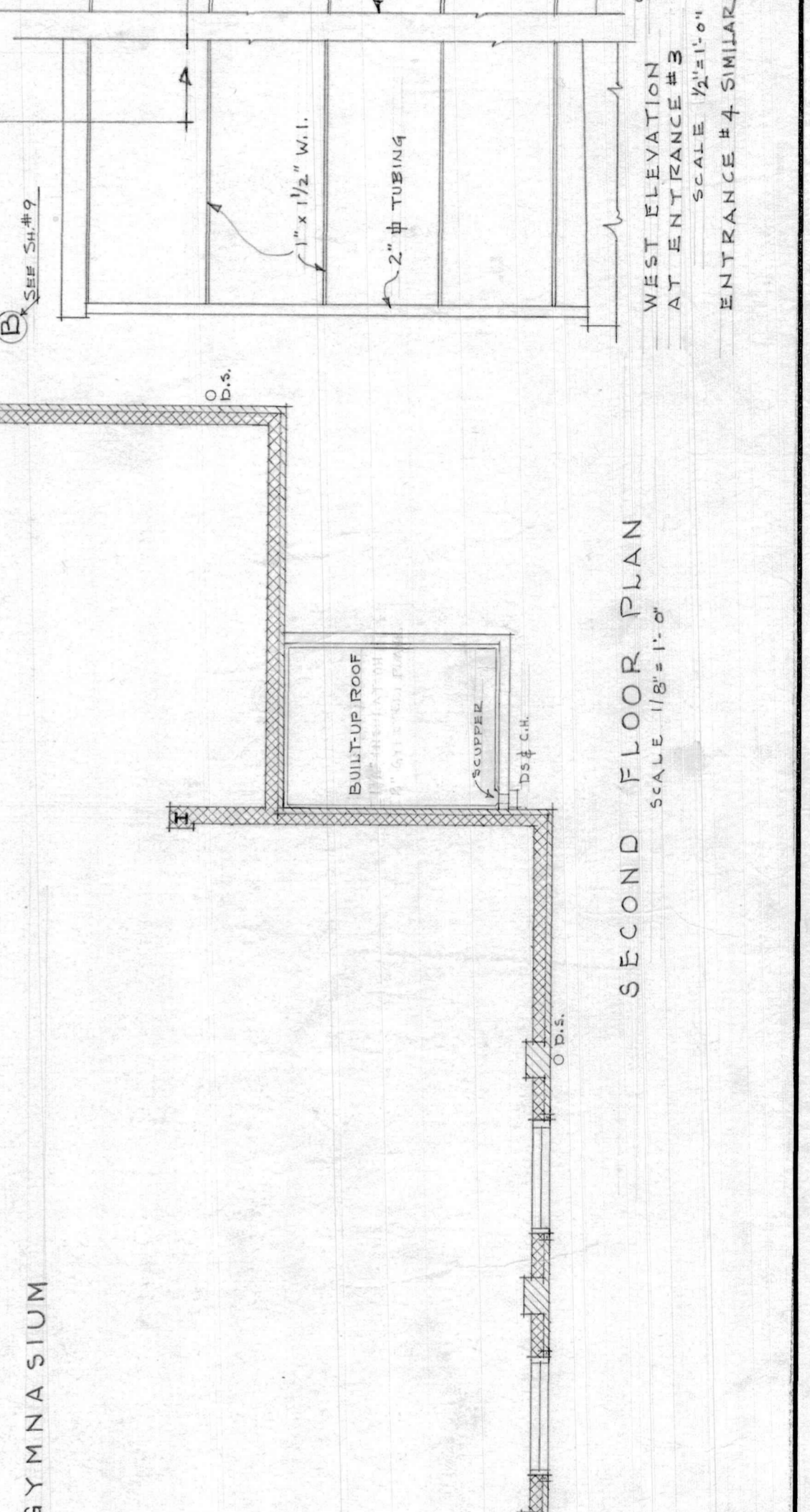
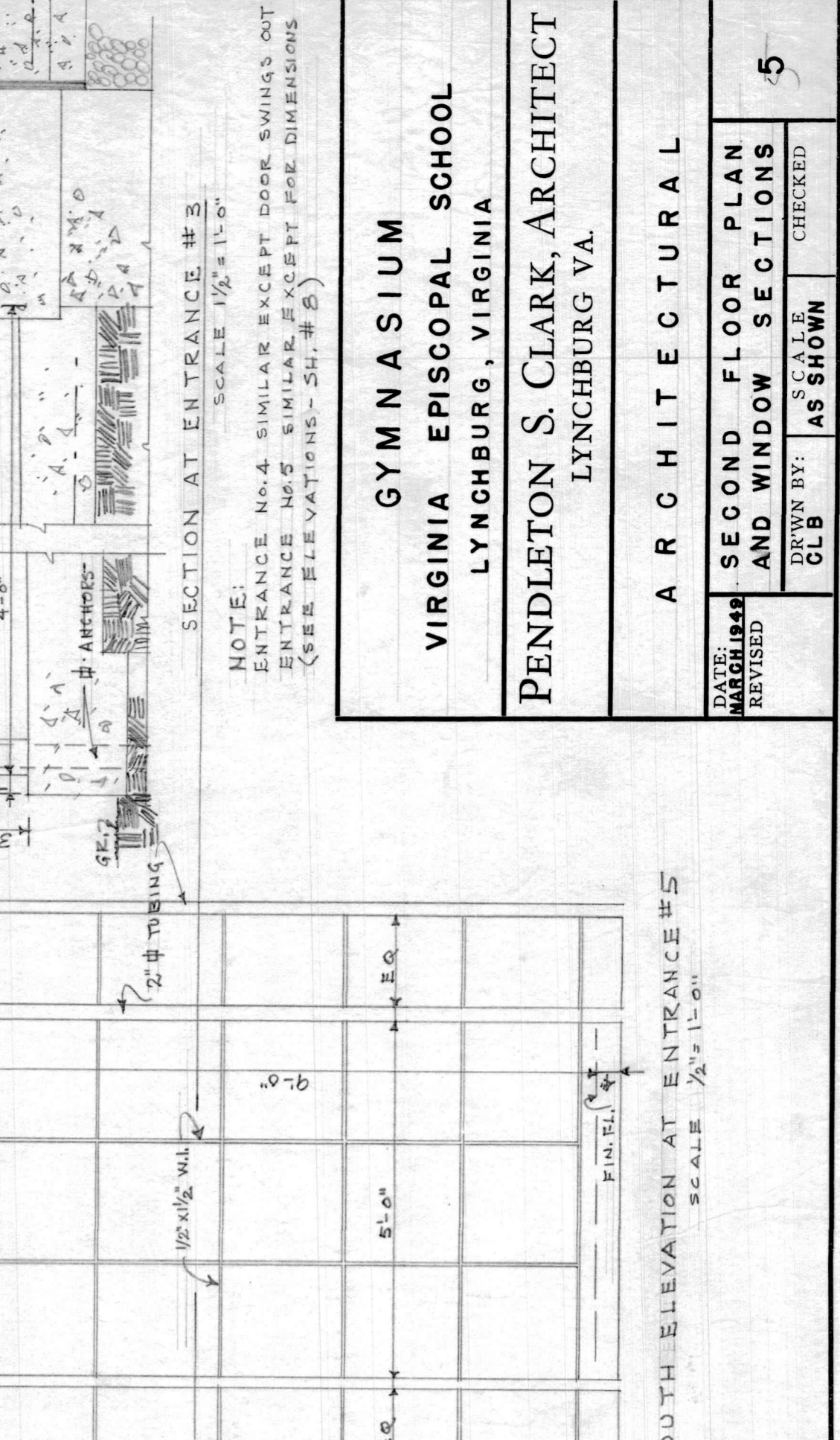
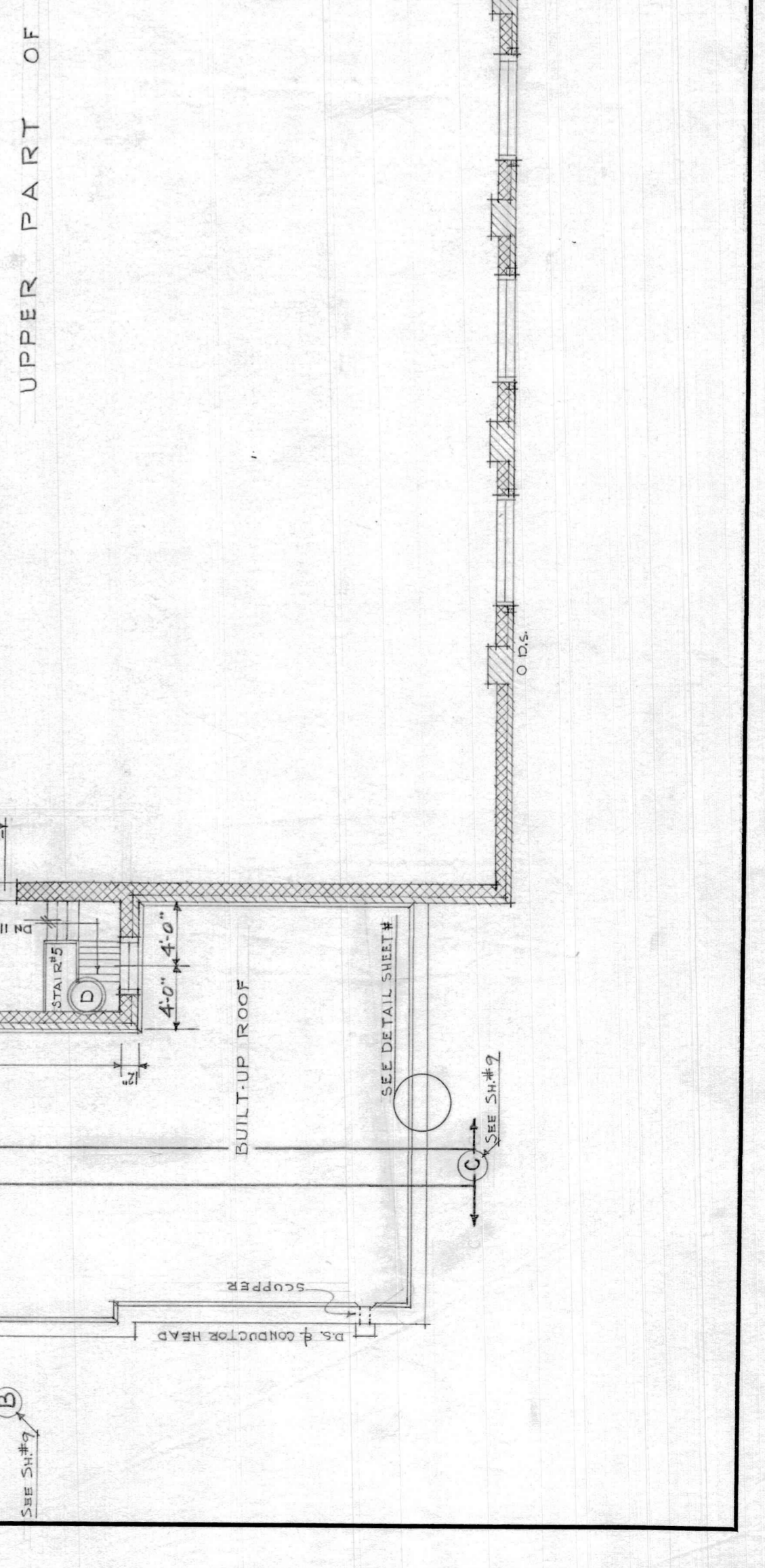
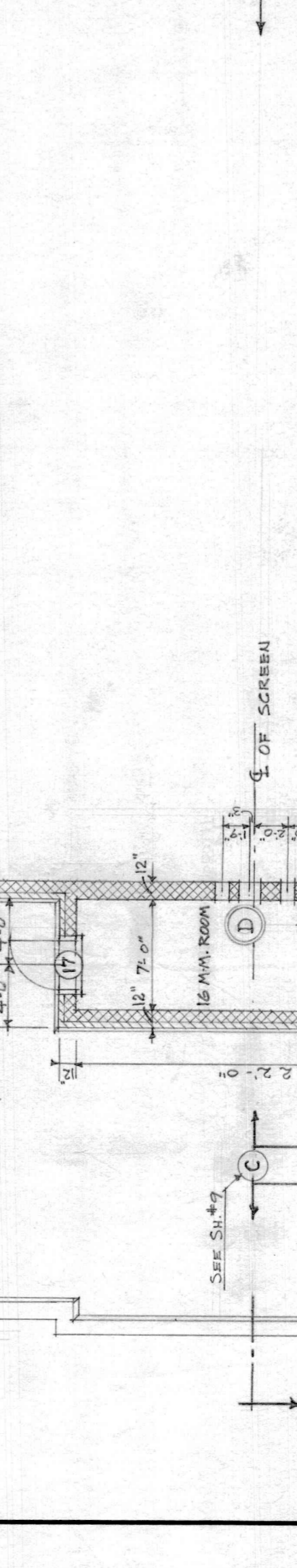
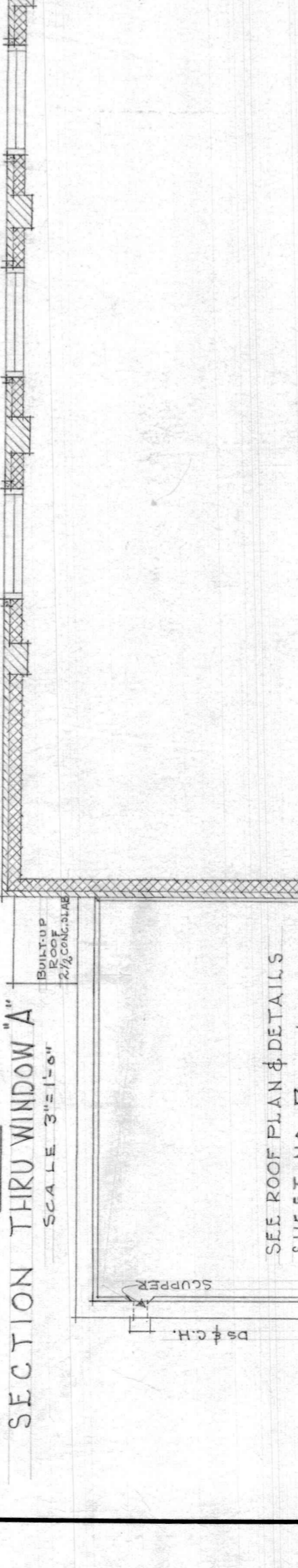
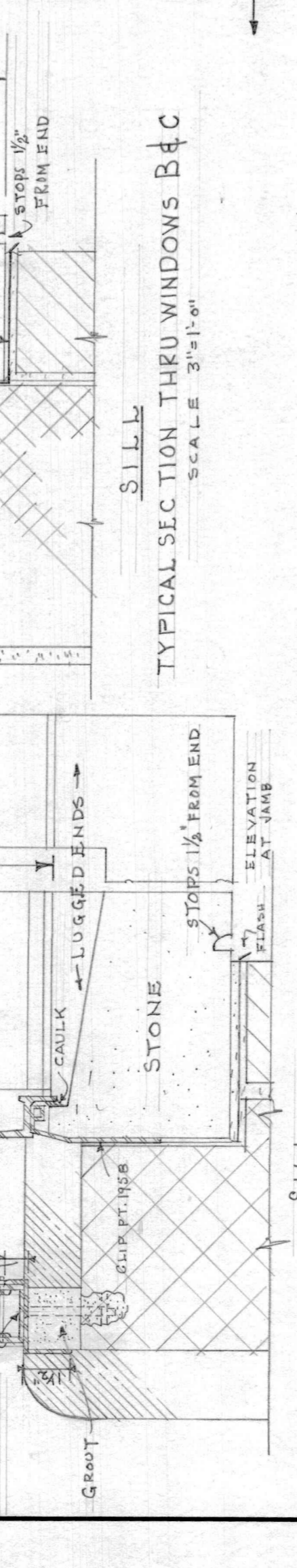
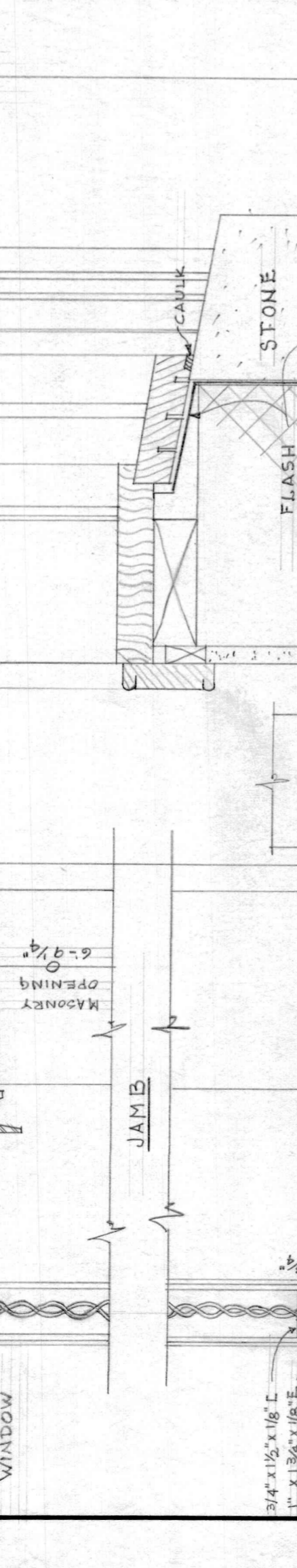
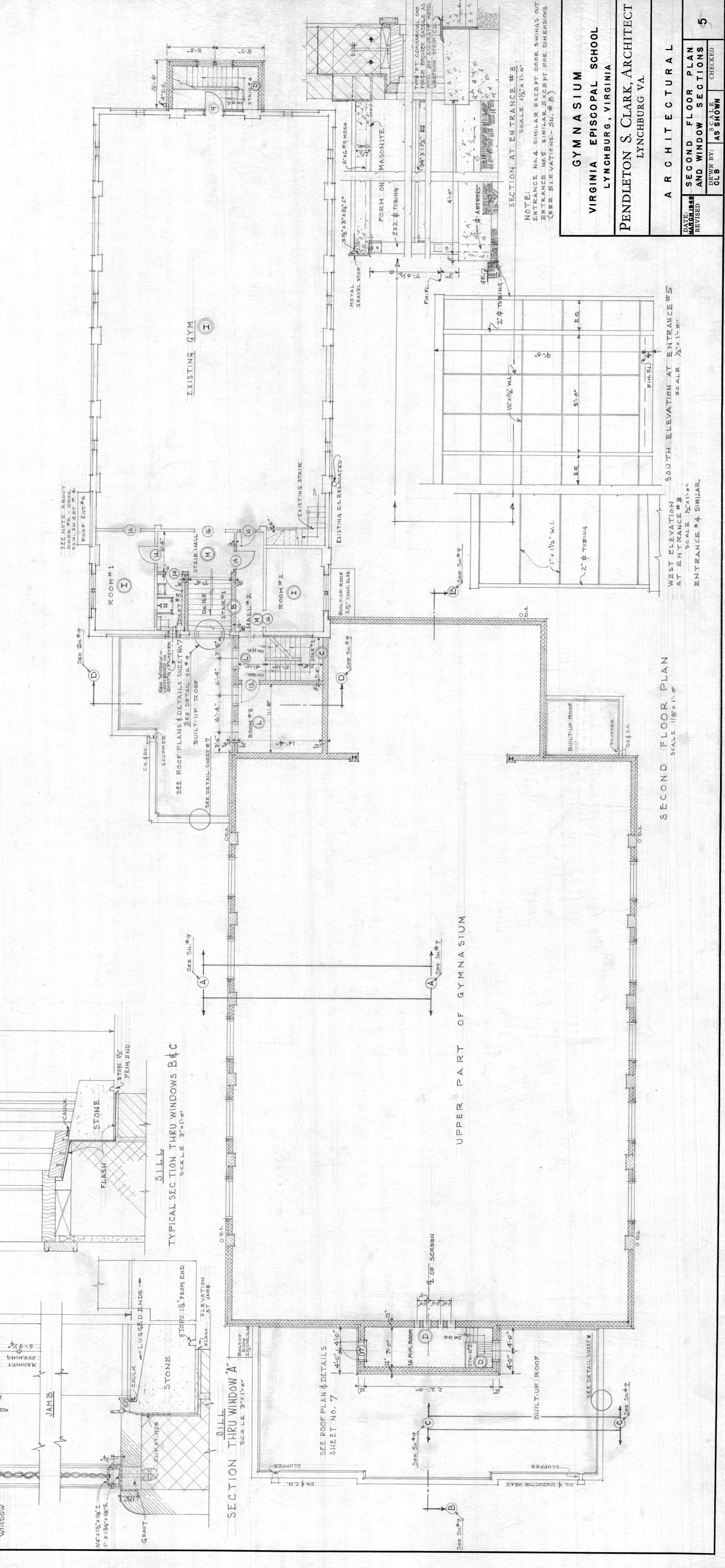
DATE: 1937
 DRAWN BY: CLB
 CHECKED: CLB

| SCHEDULE OF AREA FINISHES | | | | | | |
|---------------------------|---------------------|------------------------|------------------------|------------------|----------------|--|
| AREA | FLOOR | WALLS | CEILING | WAINSCOT | TRIM | REMARKS |
| B | CONCRETE | HW. PLASTER PAINTED | HW. PLASTER PAINTED | WAINSCOT WOOD | WOOD TYPE B | CEMENT BASE ON 1" FL. |
| C | " | " | " | " | " | " |
| D | " | " | " | " | " | " |
| E | CERAMIC TILE | HW. PLASTER PAINTED | CERAMIC TILE | CERAMIC TILE | " | METAL SPANNS & TOILET FACILITIES NECESSARY |
| I | EXISTING CEASING | HW. PLASTER PAINTED | HW. PLASTER PAINTED | " | " | " |
| L | ASPHALT TILE | HW. PLASTER PAINTED | " | " | " | " |
| M | " | EXISTING PAINTED | " | " | " | " |

| SCHEDULE OF DOORS | | | | | | |
|-------------------|------------------------|--------------------------------|----------|---------|--------|----------------|
| NUMBER | DIMENSIONS | TYPE | MATERIAL | GLAZING | FRAMES | LINTELS |
| 7 | 3'-0" X 5'-6" X 1 3/4" | HAF GLAZED | WOOD | D.S.B. | WOOD | SEE LINTEL SR. |
| 9 | 3'-0" X 4'-6" X 1 3/4" | 1/2 PANEL | " | " | " | " |
| 12 | 2'-8" X 6'-8" X 1 3/8" | " | " | " | " | " |
| 14 | EXISTING | DOORS REPAIRED & RESET | " | " | " | " |
| 16 | EXISTING | DOORS REPAIRED & LEFT IN PLACE | " | " | " | " |



ELEVATION OF PROJECTION & OBSERVATION PORTS IN 16 MM. ROOM.
SCALE 1/2" = 1'-0"
NOTE: CONTRACTOR SHALL CONSULT WITH ARCHITECT TO VERIFY LOCATION OF PROJECTION PORT C ON THE JOB



GYMNASIUM
VIRGINIA EPISCOPAL SCHOOL
LYNCHBURG, VIRGINIA
PENDLETON S. CLARK, ARCHITECT
LYNCHBURG VA.

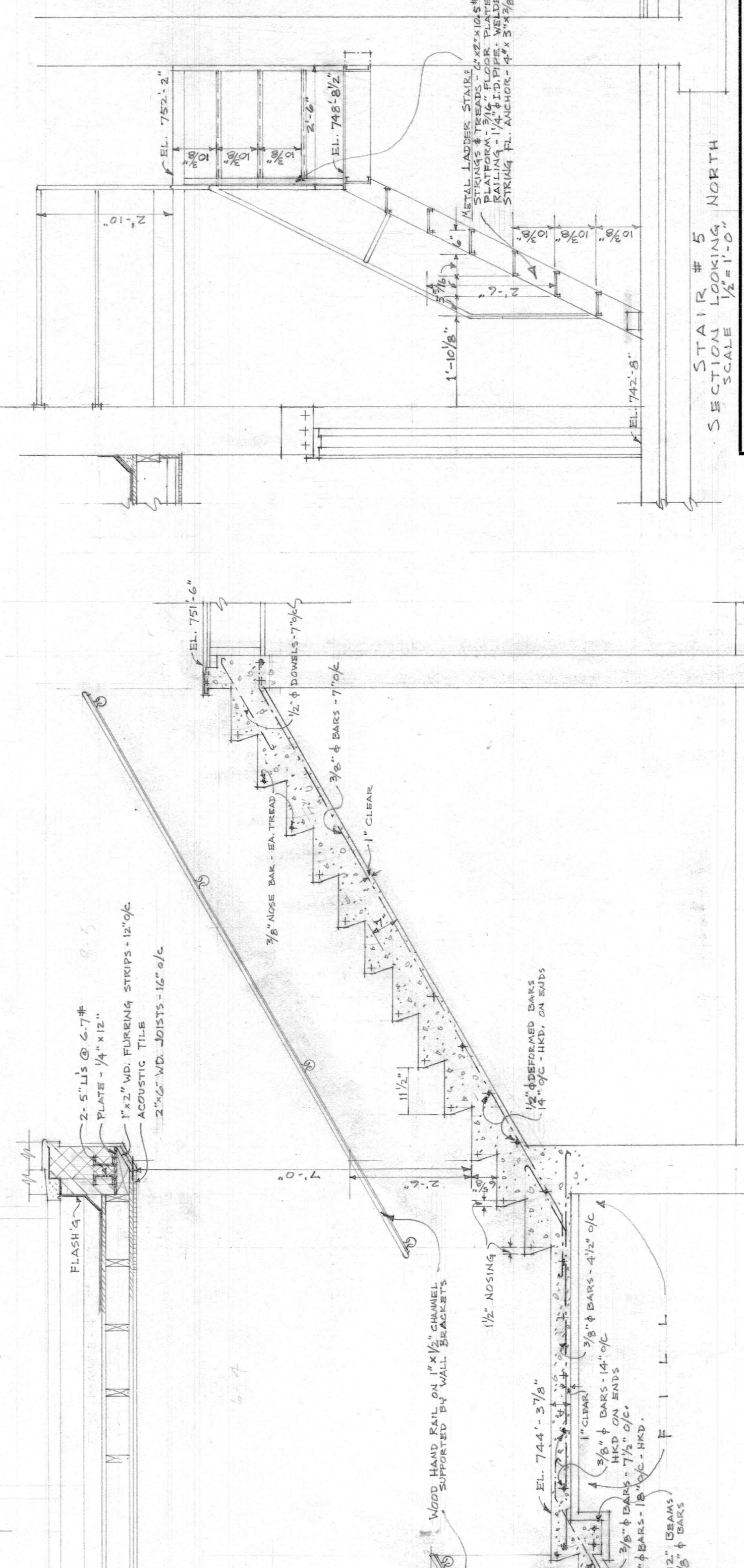
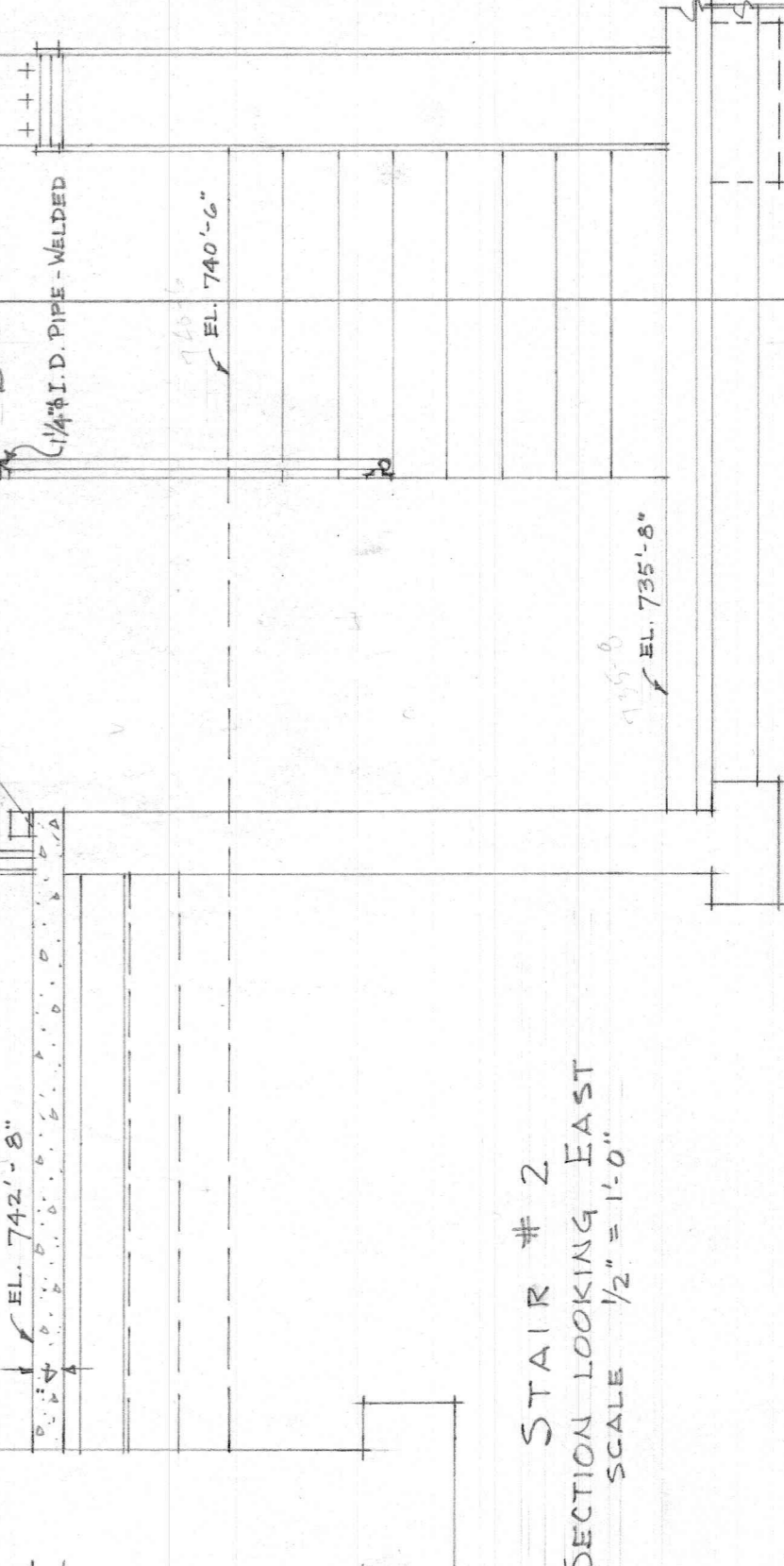
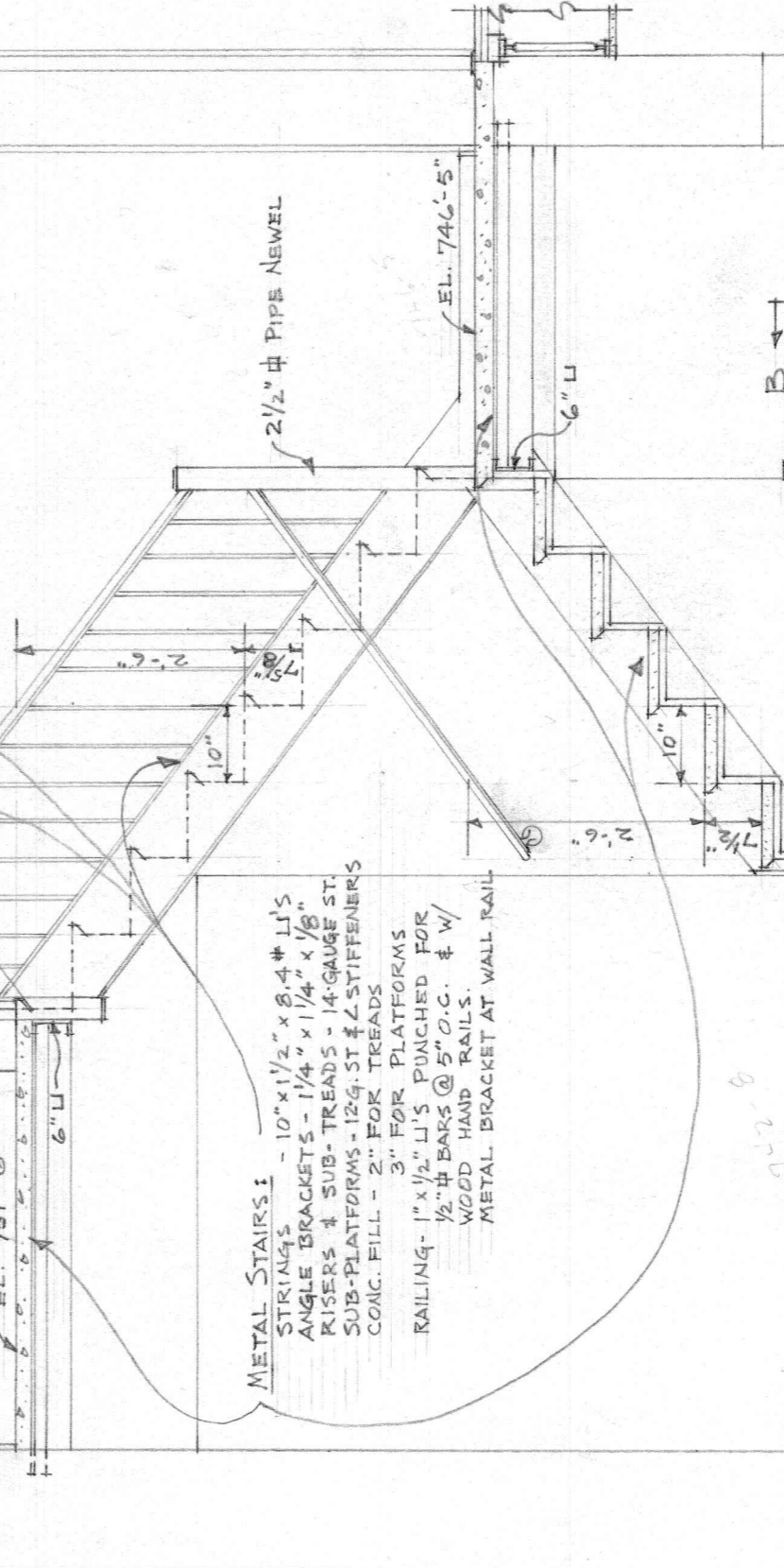
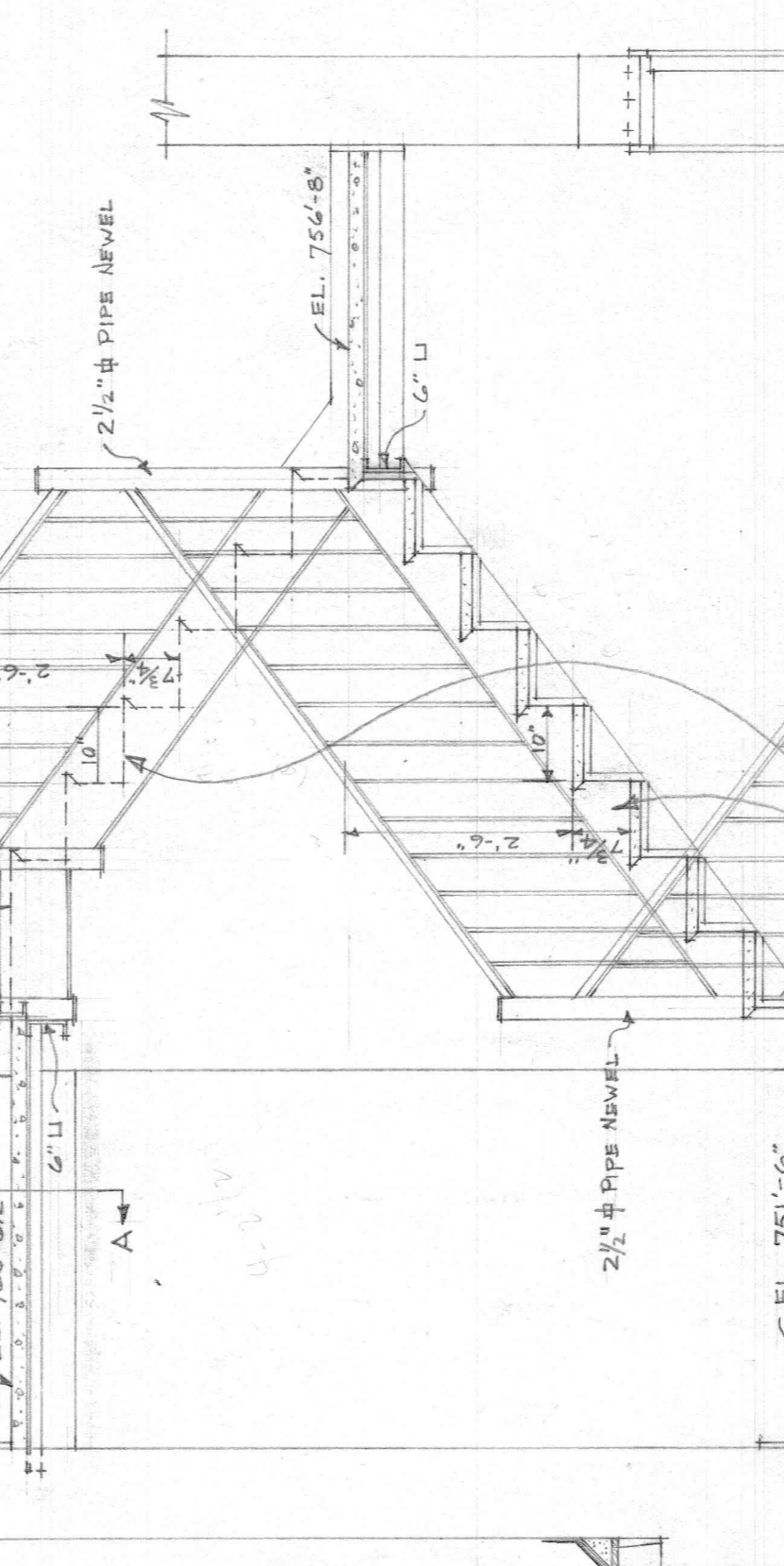
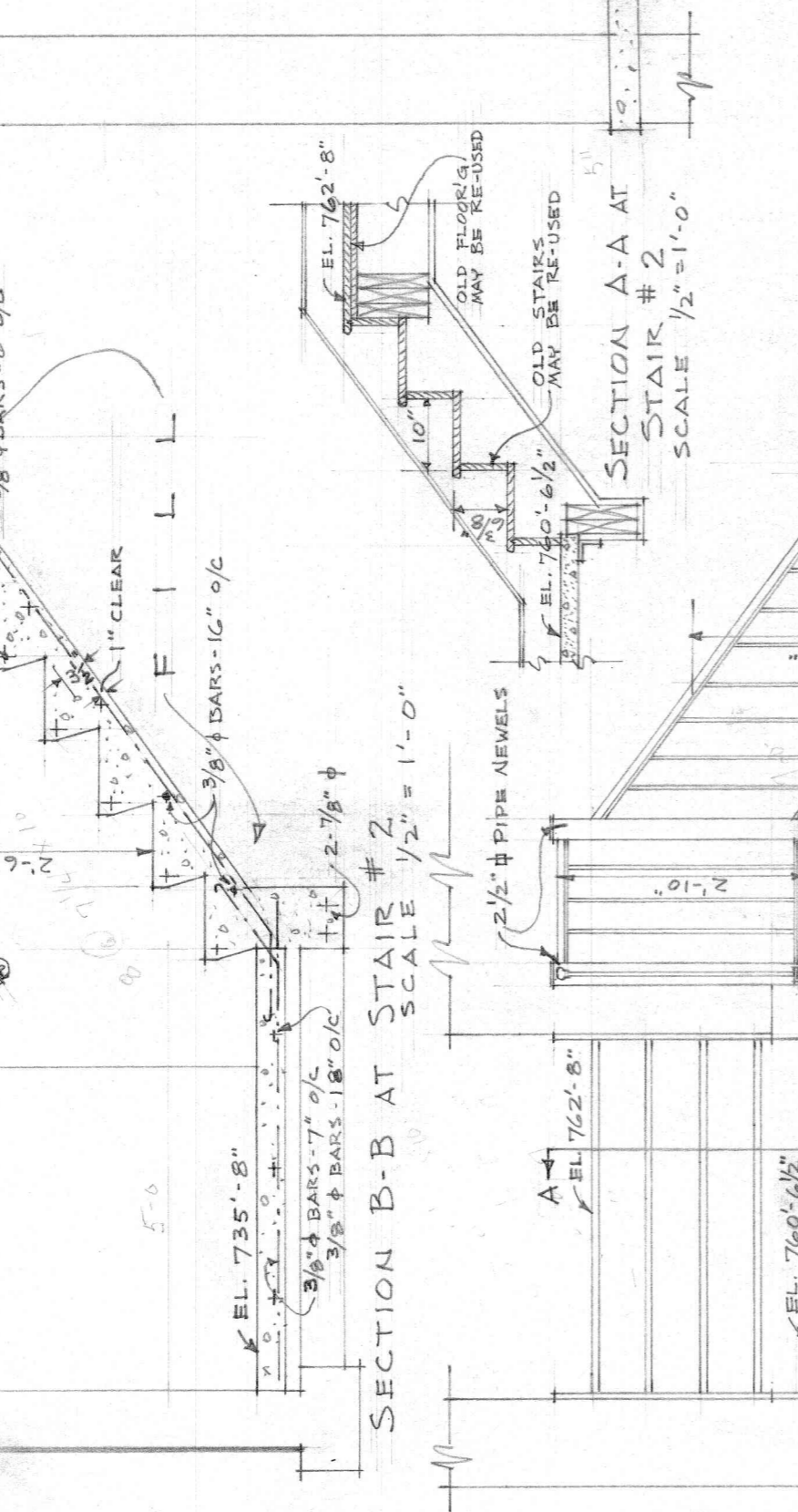
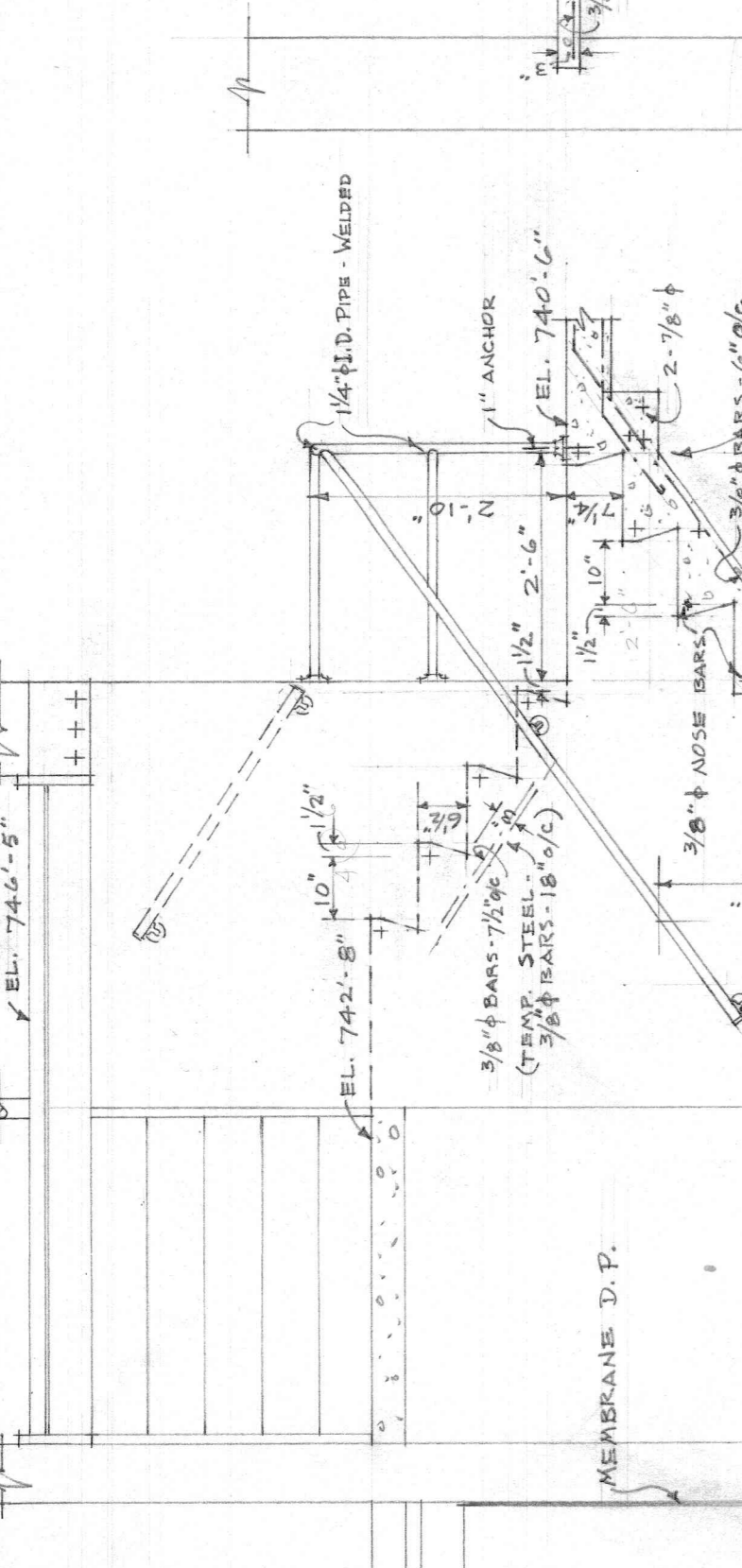
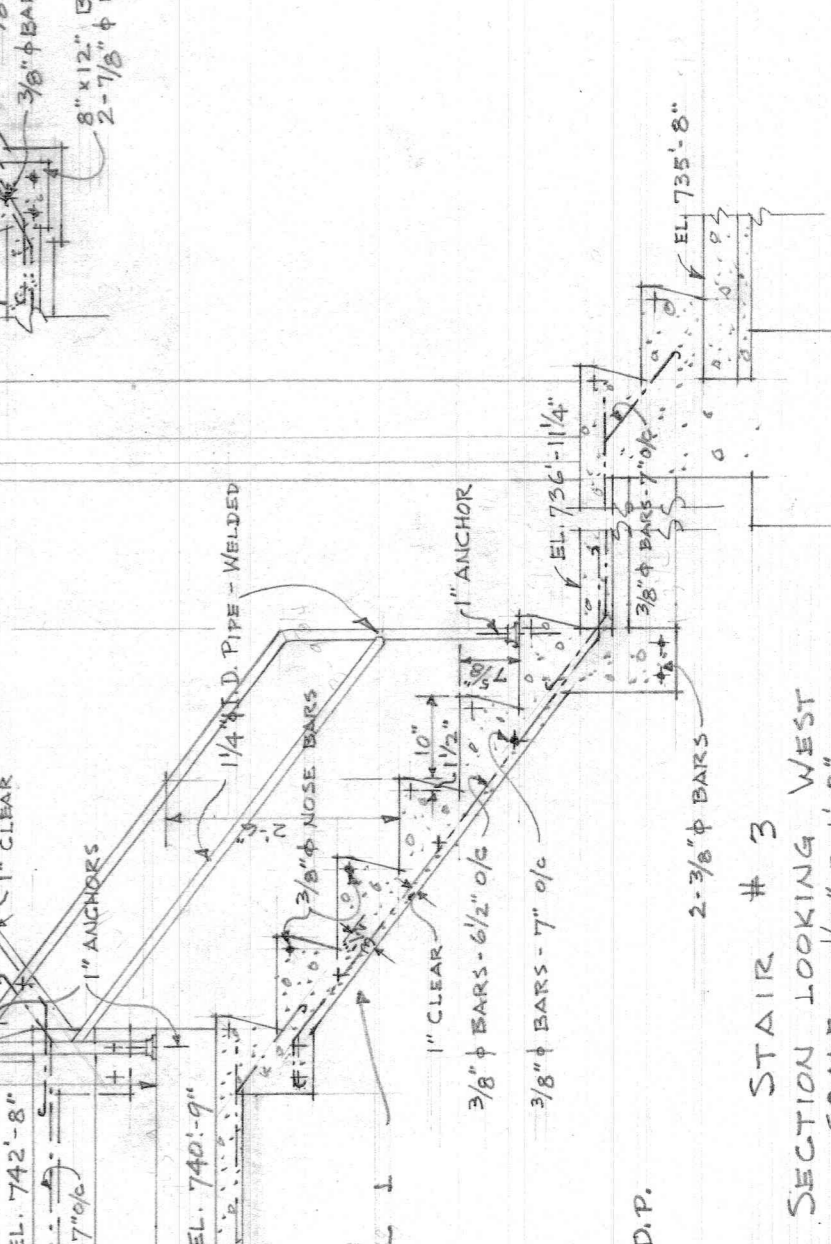
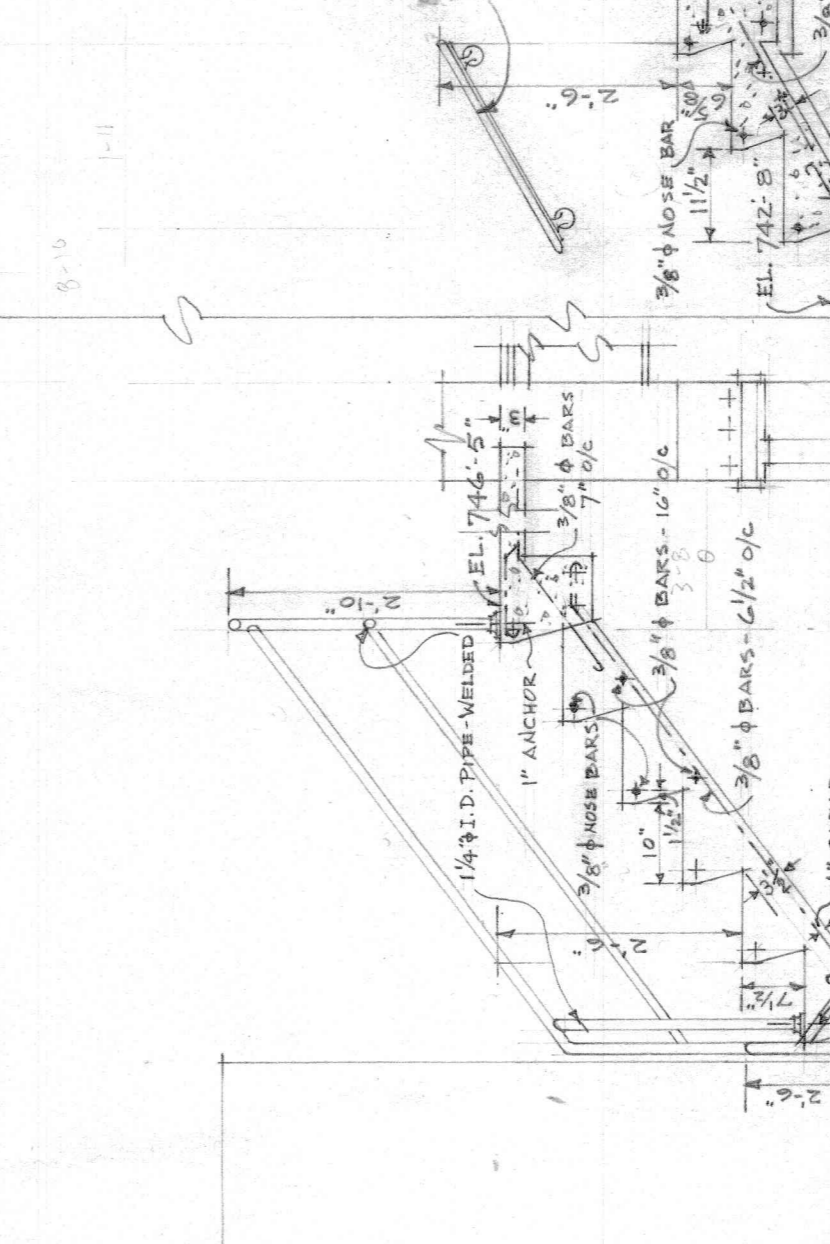
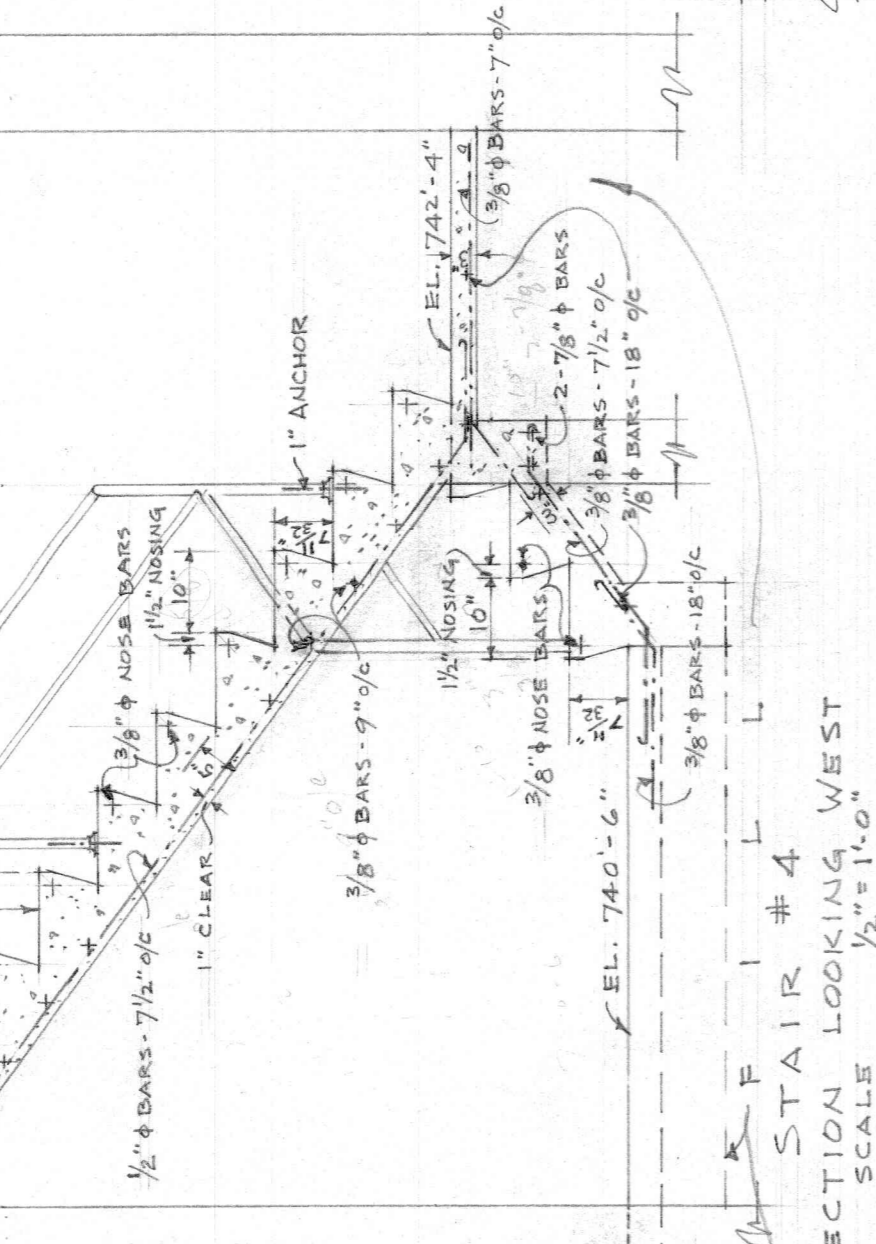
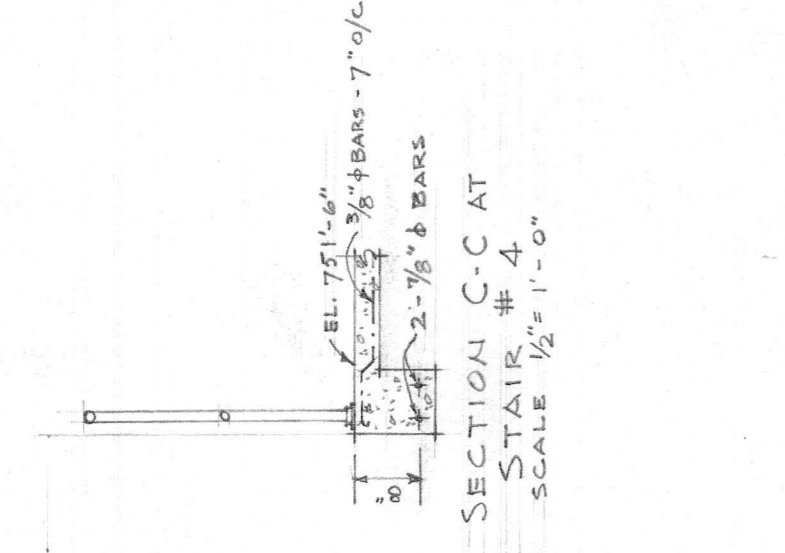
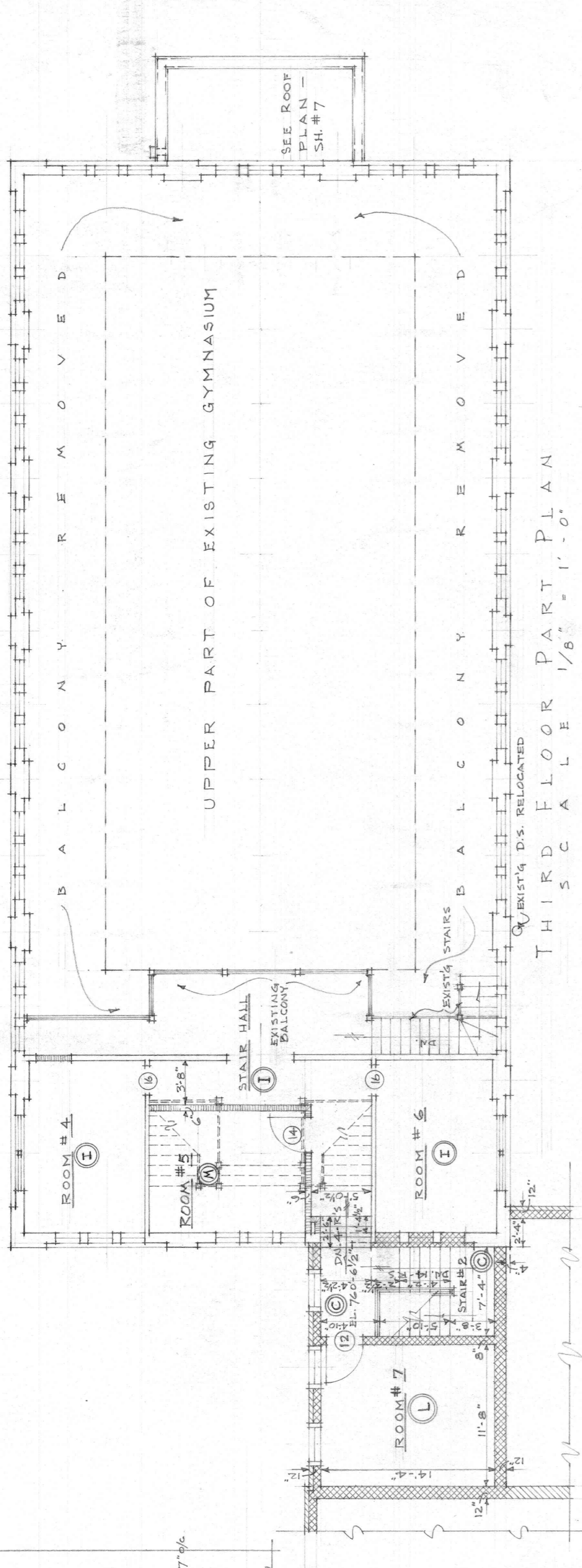
ARCHITECTURAL
SECOND FLOOR PLAN
AND WINDOW SECTIONS
DRAWN BY: SCALE AS SHOWN
CLB CHECKED

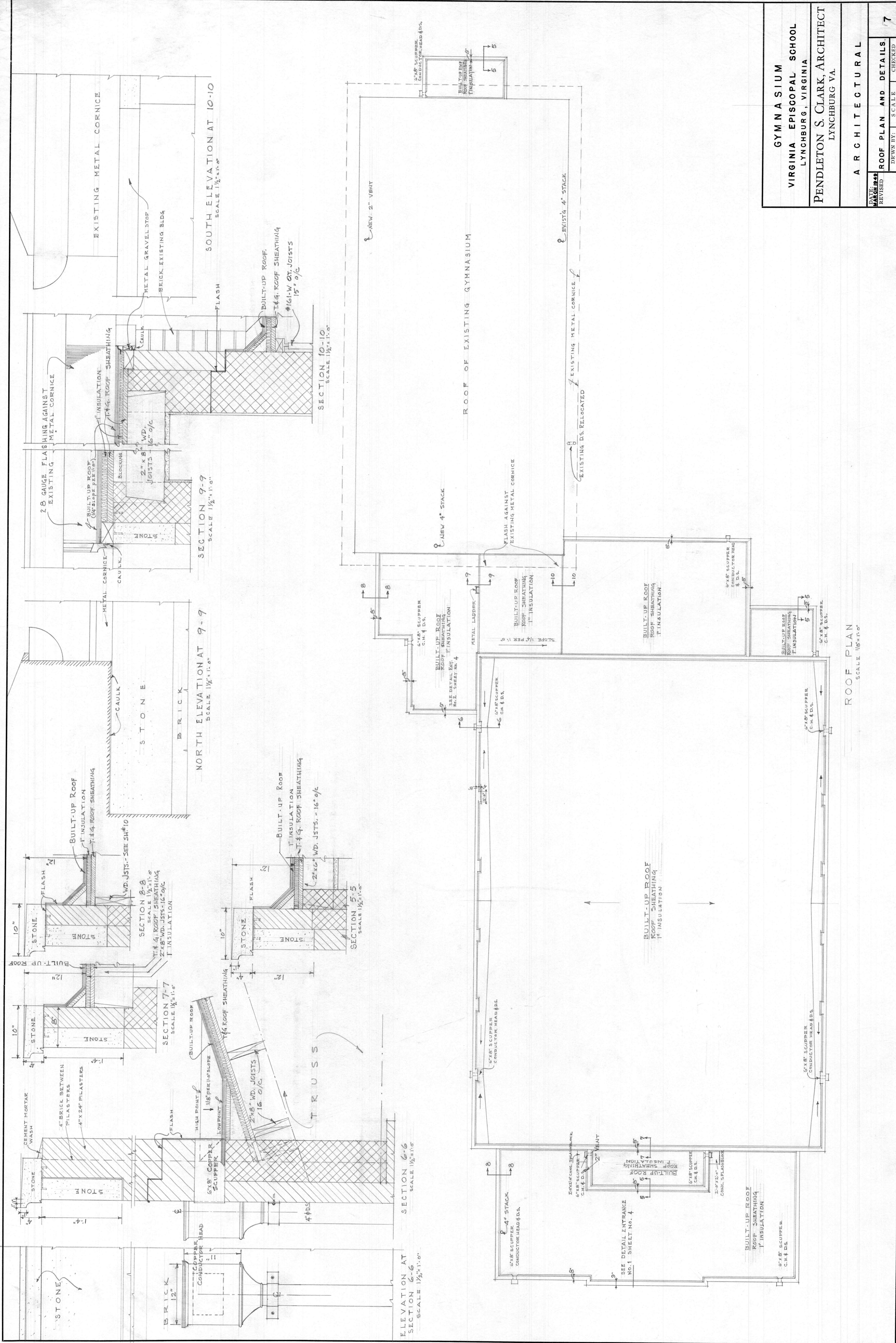
SCHEDULE OF AREA FINISHES

| AREA | FLOOR | WALLS | CEILING | WAINSCOT | WAINSCOT | BASE | TRIM | REMARKS |
|------|------------------|------------------|------------------|----------|------------------|------|-------------|--------------------------------|
| I | EXISTING PAINTED | EXISTING PAINTED | EXISTING PAINTED | NONE | EXISTING PAINTED | WOOD | PAINTED | REPAIR WHERE NECESSARY |
| L | ASPHALT TILE | H.W. PLASTER | H.W. PLASTER | II | EXISTING PAINTED | WOOD | WOOD-TYPE B | PATCH & REPAIR WHERE NECESSARY |
| M | ASPHALT TILE | EXISTING PAINTED | EXISTING PAINTED | II | EXISTING PAINTED | WOOD | WOOD-TYPE B | |
| C | CONCRETE | H.W. PLASTER | EXISTING PAINTED | II | NO/LE | WOOD | WOOD-TYPE B | |

SCHEDULE OF DOORS

| NUMBER | DIMENSIONS | TYPE | MATERIAL | GLAZING | FRAMES | INTELS | REMARKS |
|--------|------------------------|---------|---------------------------|---------|--------|--------------------|---------|
| 12 | 2'-8" X 6'-8" X 1 3/8" | 2 PANEL | WOOD | | WOOD | SEE INTL. SCHEDULE | |
| 14 | EXISTING | DOORS | REPAIRED & RESET | | | | |
| 16 | EXISTING | DOORS | RE PAIRED & LEFT IN PLACE | | | | |





GYMNASIUM
VIRGINIA EPISCOPAL SCHOOL
 LYNCHBURG, VIRGINIA
PENDLETON S. CLARK, ARCHITECT
 LYNCHBURG VA.

A R C H I T E C T U R A L

| | | |
|------------------|-----------------------|----------|
| DATE: MARCH 1935 | ROOF PLAN AND DETAILS | 7 |
| REVISED: | DRAWN BY: S. CLARK | CHECKED: |
| | SCALE AS SHOWN | |