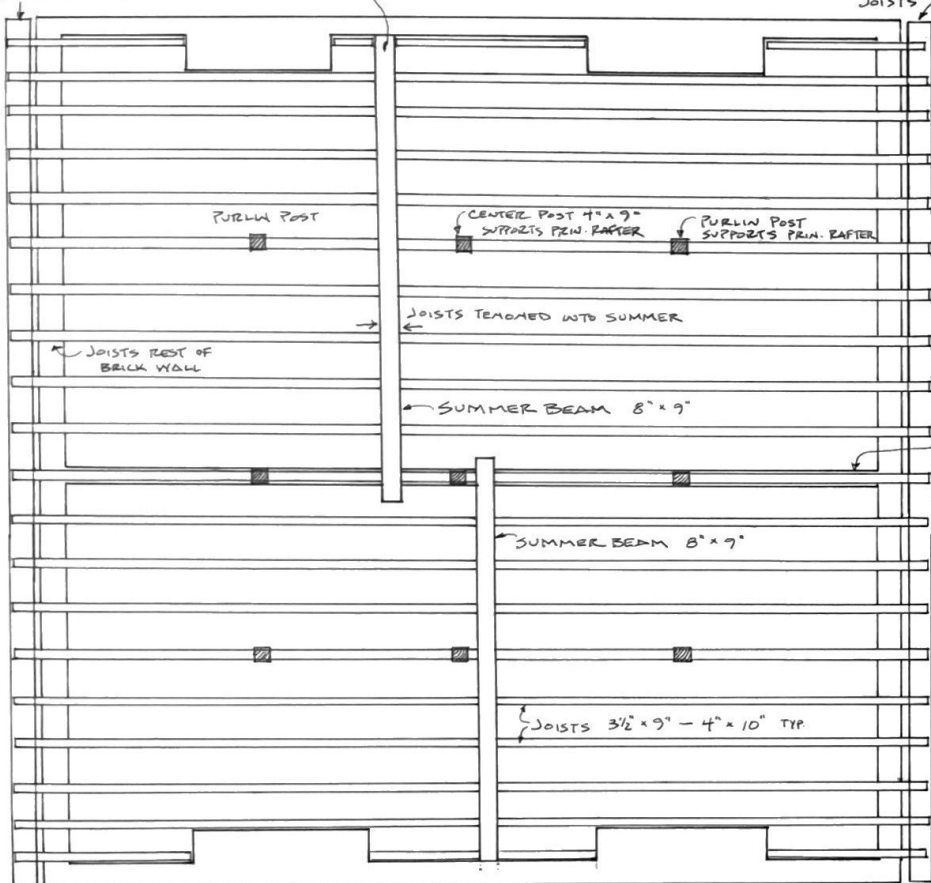


1" x 11" FALSE PLATE
SITS ON TOP OF JOISTS

SUMMER BEAMS
REST IN BRICK POCKET

1" x 11" FALSE PLATE
SITS ON TOP OF
JOISTS

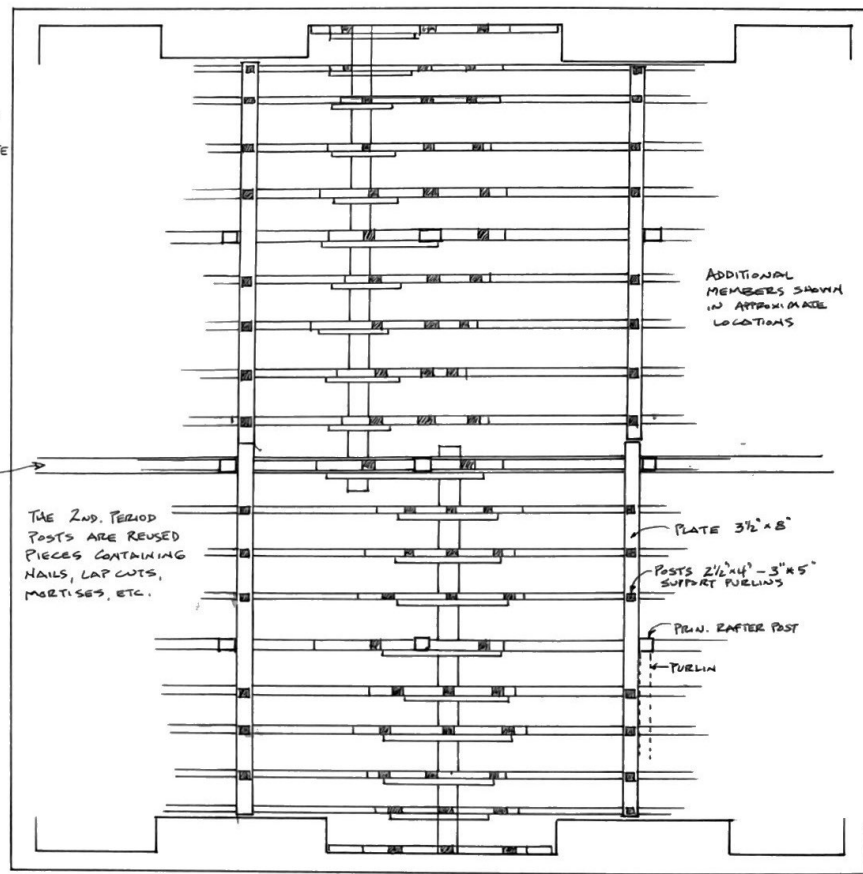


RAFTERS
ALIGN WITH
JOISTS ON
FALSE PLATE

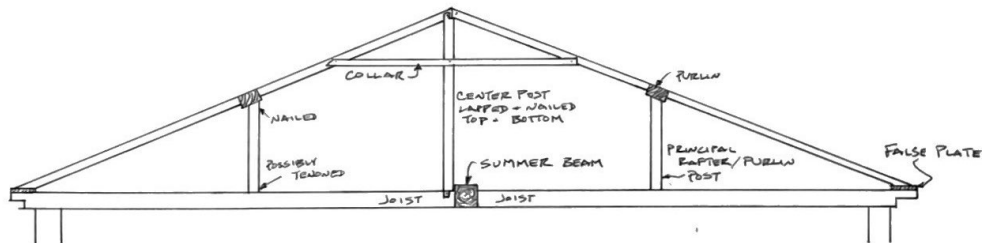
NAILS
WROUGHT
ROSE HEAD

FRAMING
MEMBERS
OAK OR
CHESTNUT
PIT-SAWN

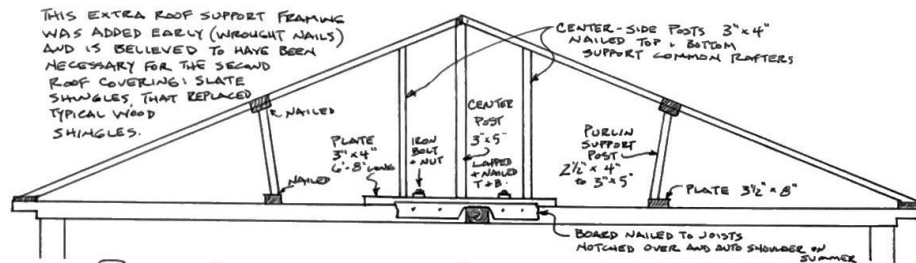
BRICK
BEARING
WALL



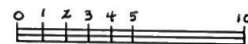
NORTH



PLAN + SECTION · ATTIC FLOOR JOISTS · ORIGINAL CONDITION



PLAN + SECTION · ATTIC FLOOR JOISTS · ALTERATIONS



MONTEZUMA

SCALE: 1/4" = 1'-0"

APPROVED BY:

DRAWN BY TCM

DATE: OCT 2007

REVISED

NELSON CO., VA.

ROPLAR FOREST FIELD SCHOOL

DRAWING NUMBER

6 of 9