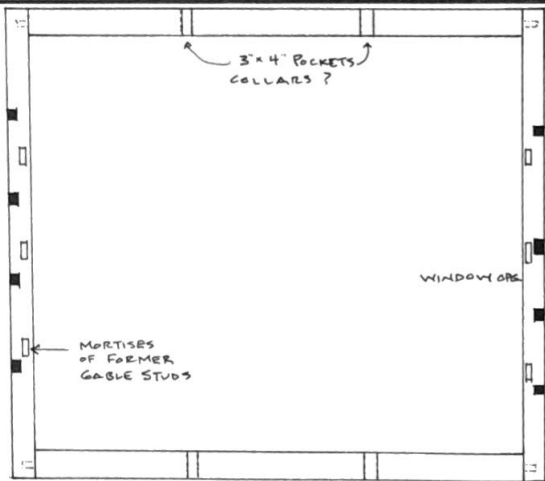
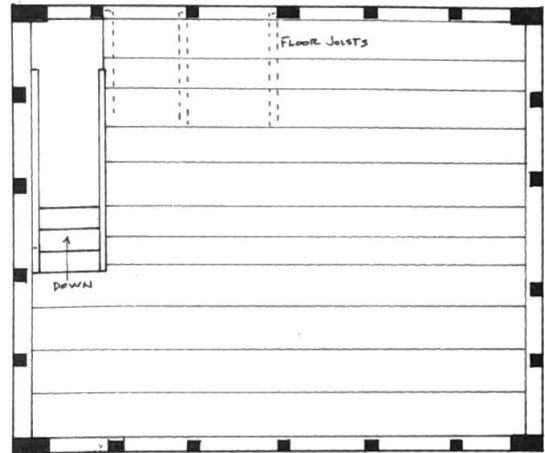


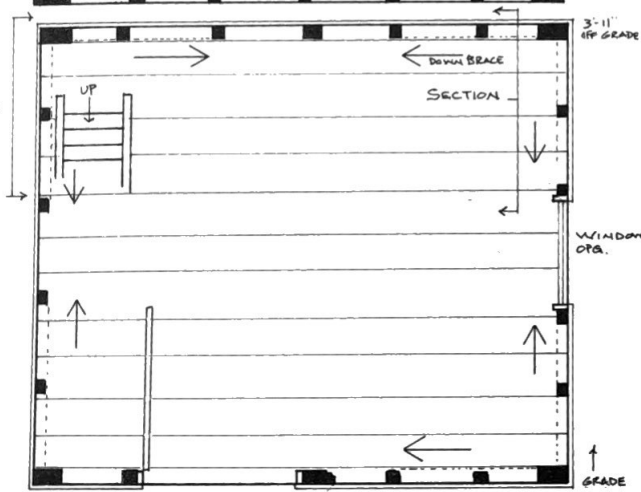
PLAN C



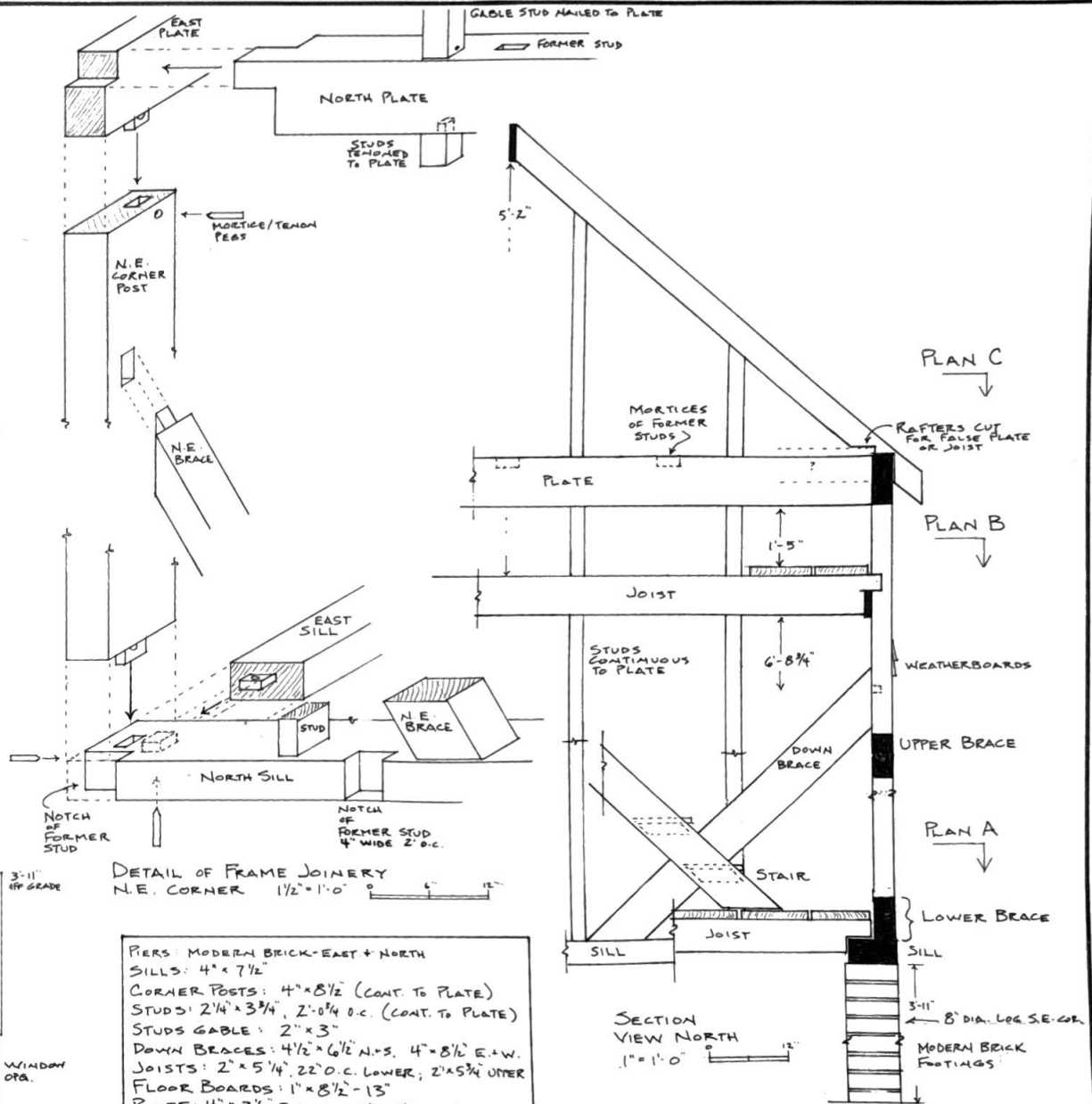
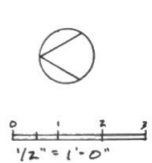
PLAN B



DETAIL OF FRAME JOINERY



PLAN A



DETAIL OF FRAME JOINERY N.E. CORNER 1/2" = 1'-0"

PIERS: MODERN BRICK - EAST + NORTH  
SILLS: 4" x 7 1/2"  
CORNER POSTS: 4" x 8 1/2" (CONT. TO PLATE)  
STUDS: 2 1/4" x 3 3/4", 2'-0 1/4" O.C. (CONT. TO PLATE)  
STUDS GABLE: 2" x 3"  
DOWN BRACES: 4 1/2" x 6 1/2" N+S, 4" x 8 1/2" E+W  
JOISTS: 2" x 5 1/4", 22" O.C. LOWER; 2 1/4" x 5 1/4" UPPER  
FLOOR BOARDS: 1" x 8 1/2" - 13"  
PLATE: 4" x 7 1/2" E+W, 4" x 6" N+S  
RAFTERS: 2" x 4" 1'-10" O.C.  
SHEATHING: 1" x 11" - 14"  
WEATHERBOARDS: 5/8" x 6 1/2", 5 3/4" EXPOSED  
DOOR: 3'-7" WIDE BOARD-N. BATTEN, WROUGHT NAILS  
EVIDENCE OF H-L HINGES; RIMLOCK 3 1/2" x 5 1/2"  
CUT NAILS - 1840s -

BUILDING HAS BEEN ALTERED (FORMER STUDS IN SILL AND PLATE). UPPER LEVEL FLOOR COULD HAVE BEEN ADDED. ORIGINAL USE UNKNOWN.

ROSEDALE: TOOL HOUSE		
SCALE: 1/2" = 1'-0"	APPROVED BY:	DRAWN BY: T.M.
DATE: 6-2014		REVISED:
POPLAR FOREST FIELD SCHOOL		
LYNCHBURG, VA.		
DRAWING NUMBER		13 of 13