

PRESERVATION NOTES

- SMOKEHOUSE IMPRT. TO PRESERVE "A"
- BRICK CONSERVATION NEEDED W/ LIME MORTAR
- BARN / GARAGE BLDG SOUTH OF HOUSE "B" HAS ORIG HOUSE PARTS THAT SHOULD BE KEPT.
- SHED SOUTH OF SMOKEHOUSE "C" HAS ORIG HOUSE PARTS THAT SHOULD BE KEPT.

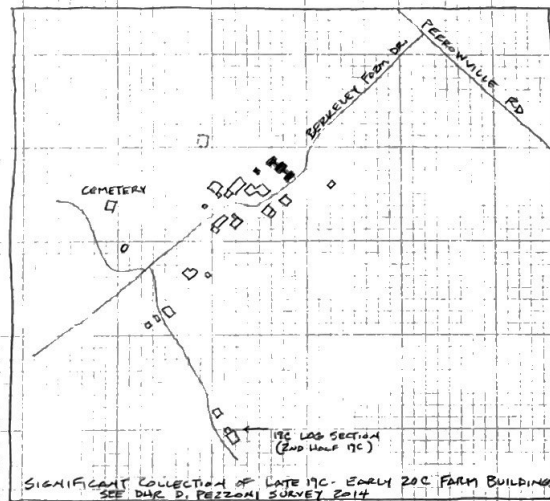
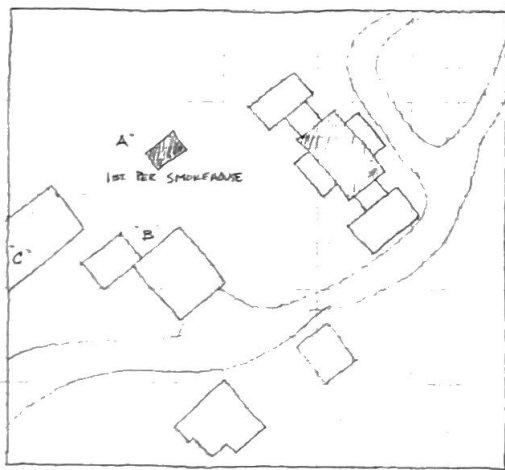
BRICKWORK

- EXCELLENT SAND-MOLD BRICKS
 - FLEMISH BAND NORTH + WEST ELEVS.
 - 5-COURSE BAND SOUTH + EAST ELEVS.
 - 2 PART MOLDED WATERTABLE
- JOINTS STRUCK + PENALLED

ATTIC

- ORIG RAFTERS + SHEATHING
- EVID. OF ORIG TIN ROOF COVERING
- EVID. OF FRONT PORTICO - 20C
- RAFTER ENDS LOCKED INTO JOISTS W/ PERPENDICULAR BOARD
- PRINCIPAL JOISTS OVER WALLS BELOW
- JOIST ENDS NOTCHED FOR CORNICE
- KNEE WALL STUDS
- RIDGE BOARD
- CUT NAILS
- LUMBER SASH - SAWN
- CHIMNEY W/ PENELLING, NO WASH

NO EVID. OF ORIG. FRONT PORTICO BUT 1937 SURVEY SAYS 20' x 20'



PERROWVILLE ROAD

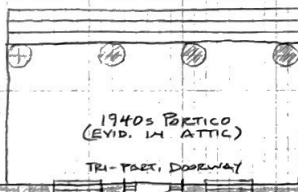
"BERKELEY" CA. 1848
 ALSO "GRAISLANDS" (1940s ADDITIONS)
 "PERROW PLACE" (EVERETT FAUBER)
 "SAMUEL MCGHEE PLACE" - BUILDER
 PERROWVILLE ROAD, FOREST VA
 (MANY 20C FARM BLDGS - SURVEYED BY DHR 2014)
 ONE 1ST. PERIOD - SMOKEHOUSE

LARGE-DENTIL CORNICE W/ ACORN'S @ CORNERS

ORIG. LOUVERED BLINDS W/ BOTTOM SOLT + SILL BAR

FLEMISH BAND STRUCK JOISTS W/ PENELLING (P.S. WASH)

AND WEST ELEV.

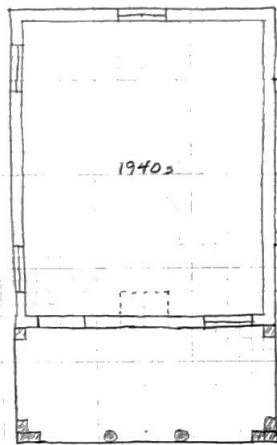


6/8 SASH WINDOWS; WOOD LITES W/ CORNER BLOCKS

BSMT. WIND. BOTH SIDES

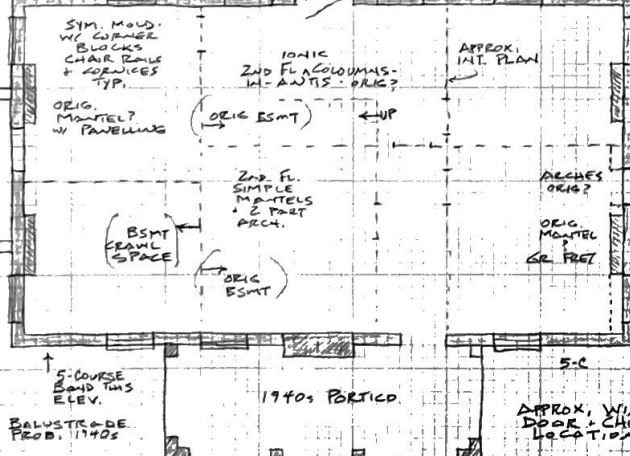
2-PART MOLDED WATERTABLE ALL ELEVS.

FLEMISH BAND BELOW W.T.



20'

1940s



SYM. MOLD. W/ CORNER BLOCKS CHAIR BRACE + CORNICES TYP.

ORIG. MANTEL W/ PANELLING

BSMT. CRAWL SPACE

ORIG. BSMT

IONIC 2ND FL. COLUMNS - IN - ANTIS - ORIG?

ORIG BSMT

2ND FL. SIMPLE MANTELS + 2 PART ARCH.

ORIG BSMT

APPROX. INT. PLAN

ARCHES ORIG?

ORIG. MANTEL OR. FRET

BSMT. WINDOW THIS ELEV.

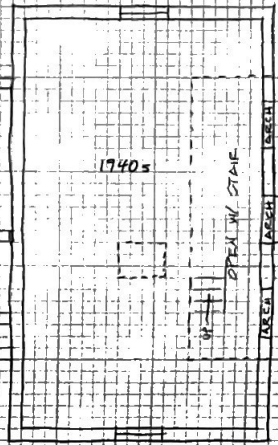
BSMT. WINDOW

APPROX. WINDOW, DOOR + CHIMNEY LOCATIONS

20'

30'

1940s



20'

1940s

37'

BLUE RIDGE MTHS.

22'

27'

54'

22'

1ST. PERIOD BRICK SMOKEHOUSE

TRAVIS McDONALD
 APRIL 2015
 1/8" = 1' SCALE