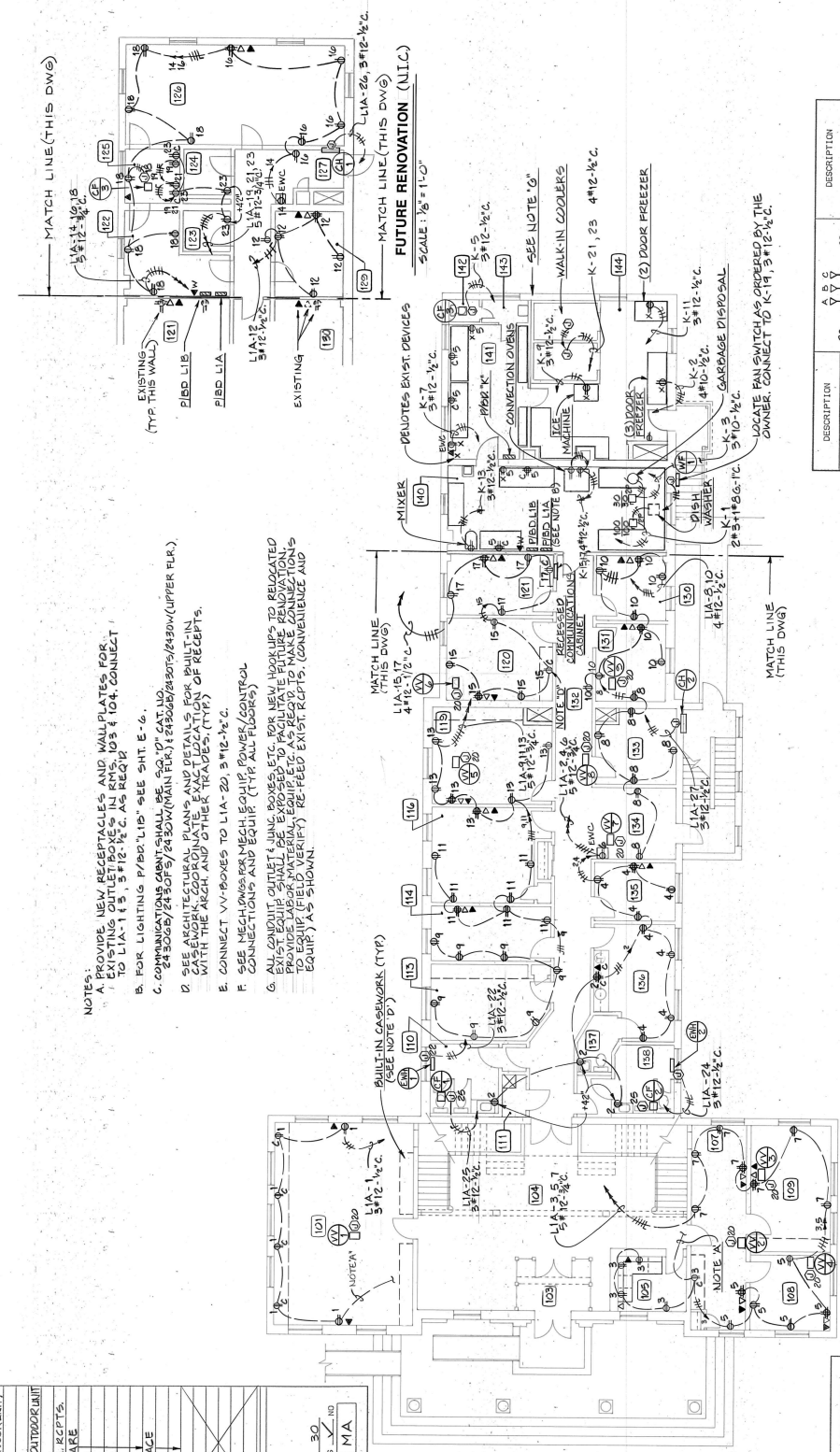


HANOVER ENGINEERS P.C.
CONSULTING ENGINEERS
ROANOKE, VIRGINIA



- NOTES:
- A. PROVIDE NEW RECEPTACLES AND WALL PLATES FOR EXISTING OUTLET BOXES IN RMs. 103 & 104. CONNECT TO LIA-1 & 3 @ 12-1/2".
 - B. FOR LIGHTING P/B'D 'L18' SEE SHT. E-6.
 - C. COMMUNICATIONS CABINET SHALL BE 50" D. CAT. NO. 24300B/24305/2430V (MAIN FLR.) & 24300B/24305/2430V (UPPER FLR.). SEE ARCHITECTURAL PLANS AND DETAILS FOR BUILT-IN WALL TRIP (FIELD VERIFY) RE-FEED EXIST. RECEPT. (CONVENIENCE AND EQUIP.) AS SHOWN.
 - D. CONNECT VV-BOXES TO LIA-20, 3 @ 12-1/2".
 - E. SEE MECHANICAL MECH. EQUIP. POWER CONTROL CONNECTIONS AND EQUIP. (TRF. ALL FLOORS).
 - F. CONDUIT OUTLET & WIRE BUNDLES TO BE RELOCATED TO PROVIDE MAJOR MATERIAL EQUIP. AS REQUIRED TO MAKE CONNECTIONS WITH THE ABOVE AND TO THE VV-BOXES (TRF. EQUIP.) AS SHOWN.

DESCRIPTION	QTY	UNIT	DESCRIPTION	QTY	UNIT
AC-1 (OUTDOOR UNIT)	30		AC-2 (OUTDOOR UNIT)	30	
AC-3 (OUTDOOR UNIT)	30		EXT. RECEPT.	10	
EXT. OUTDOOR UNIT	5		SPACE	14	
SPACE	7		SPACE	14	
SPACE	1		SPACE	14	
SPACE	15		SPACE	24	

DESCRIPTION	QTY	UNIT	DESCRIPTION	QTY	UNIT
MAIN CIRCUIT BREAKER	42	K	A-I.C. SYNTHETICAL	42	K
BRANCH CIRCUIT BREAKER	42	K	A-I.C. SYNTHETICAL	42	K
WALK-IN COOLER COMP.	30		WALK-IN COOLER COMP.	30	
SPACE	14		SPACE	14	
SPACE	14		SPACE	14	
SPACE	14		SPACE	14	

MAIN CIRCUIT BREAKER 42 K A-I.C. SYNTHETICAL
BRANCH CIRCUIT BREAKER 42 K A-I.C. SYNTHETICAL
WALK-IN COOLER COMP. 30
SPACE 14
TOTAL NO. OF POLES 30
SHORT TRIP YES / NO
MOUNTING SURFACE YES / NO
LOCATION 122 (FUTURE) YES / NO
P/B'D DESIGNATION LIA
* * * DENOTES FUTURE WORK

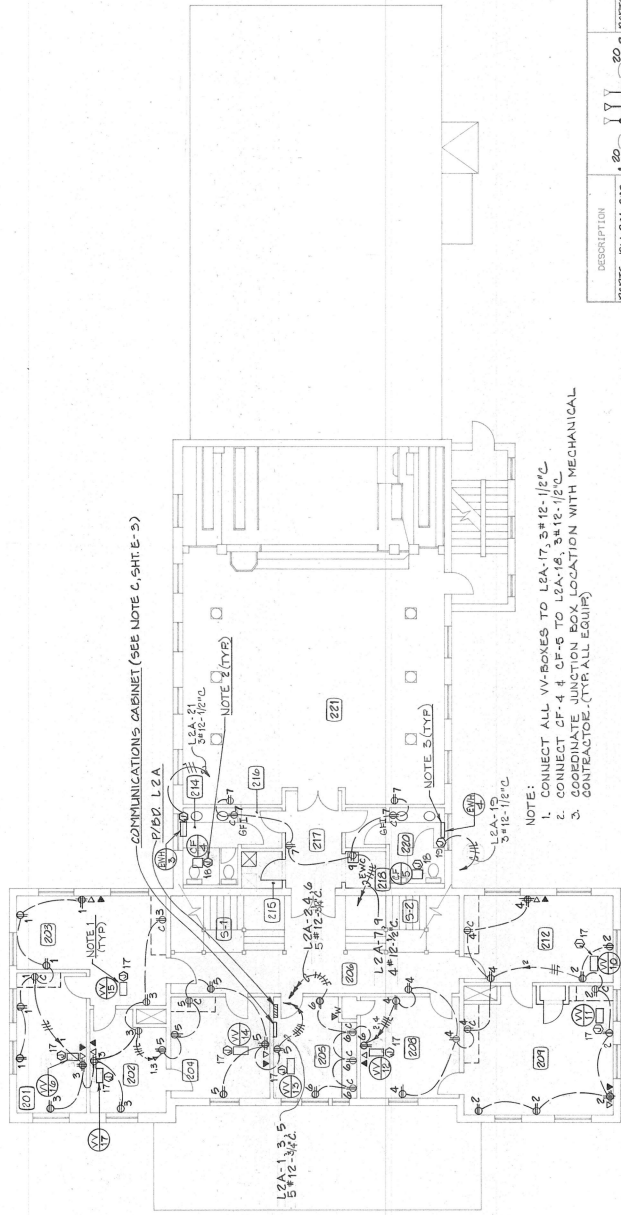
MAIN FLOOR PLAN - POWER
SCALE: 1/8" = 1'-0"

DESCRIPTION	QTY	UNIT	DESCRIPTION	QTY	UNIT
AC-1 (OUTDOOR UNIT)	30		AC-2 (OUTDOOR UNIT)	30	
AC-3 (OUTDOOR UNIT)	30		EXT. RECEPT.	10	
EXT. OUTDOOR UNIT	5		SPACE	14	
SPACE	7		SPACE	14	
SPACE	1		SPACE	14	
SPACE	15		SPACE	24	

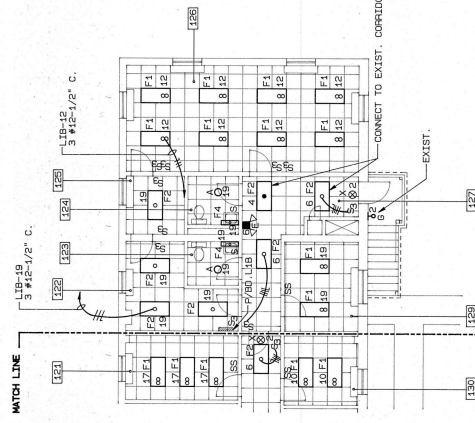
DESCRIPTION	QTY	UNIT	DESCRIPTION	QTY	UNIT
MAIN CIRCUIT BREAKER	42	K	A-I.C. SYNTHETICAL	42	K
BRANCH CIRCUIT BREAKER	42	K	A-I.C. SYNTHETICAL	42	K
WALK-IN COOLER COMP.	30		WALK-IN COOLER COMP.	30	
SPACE	14		SPACE	14	
SPACE	14		SPACE	14	
SPACE	14		SPACE	14	

DESCRIPTION	QTY	UNIT	DESCRIPTION	QTY	UNIT
DISH WASHER	1		DOOR FREEZER	2	
GARAGE DISPOSAL	30		WALK-IN COOLER COMP.	30	
REFTS. 25 A. M.C.B. T2P	20		WALK-IN COOLER COMP.	30	
SPACE	14		SPACE	14	
SPACE	14		SPACE	14	
SPACE	14		SPACE	14	

MAIN CIRCUIT BREAKER 42 K A-I.C. SYNTHETICAL
BRANCH CIRCUIT BREAKER 42 K A-I.C. SYNTHETICAL
WALK-IN COOLER COMP. 30
SPACE 14
TOTAL NO. OF POLES 30
SHORT TRIP YES / NO
MOUNTING SURFACE YES / NO
LOCATION 141
P/B'D DESIGNATION K

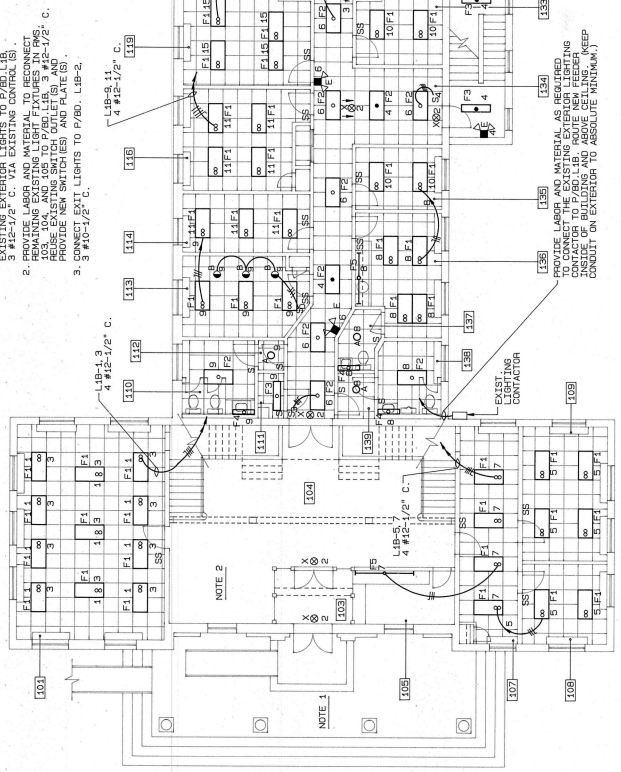


DESCRIPTION	NO.	DESCRIPTION
RCPTG-RM 201, 203	1	20
201, 202, 203	2	RCPTG-RM 209, 212
202, 204, 205, 206	3	4
214, 217, 220, 221	5	6
EWG-RM 215	7	8
LTS-RM 205	9	9
201, 202	10	10
204, 205	11	11
201, 202	12	12
204, 205	13	13
201, 202	14	14
204, 205	15	15
201, 202	16	16
204, 205	17	17
201, 202	18	18
204, 205	19	19
201, 202	20	20
204, 205	21	21
201, 202	22	22
204, 205	23	23
201, 202	24	24
204, 205	25	25
201, 202	26	26
204, 205	27	27
201, 202	28	28
204, 205	29	29
201, 202	30	30
204, 205	31	31
201, 202	32	32
204, 205	33	33
201, 202	34	34
204, 205	35	35
201, 202	36	36
204, 205	37	37
201, 202	38	38
204, 205	39	39
201, 202	40	40
204, 205	41	41
201, 202	42	42
204, 205	43	43
201, 202	44	44
204, 205	45	45
201, 202	46	46
204, 205	47	47
201, 202	48	48
204, 205	49	49
201, 202	50	50
204, 205	51	51
201, 202	52	52
204, 205	53	53
201, 202	54	54
204, 205	55	55
201, 202	56	56
204, 205	57	57
201, 202	58	58
204, 205	59	59
201, 202	60	60
204, 205	61	61
201, 202	62	62
204, 205	63	63
201, 202	64	64
204, 205	65	65
201, 202	66	66
204, 205	67	67
201, 202	68	68
204, 205	69	69
201, 202	70	70
204, 205	71	71
201, 202	72	72
204, 205	73	73
201, 202	74	74
204, 205	75	75
201, 202	76	76
204, 205	77	77
201, 202	78	78
204, 205	79	79
201, 202	80	80
204, 205	81	81
201, 202	82	82
204, 205	83	83
201, 202	84	84
204, 205	85	85
201, 202	86	86
204, 205	87	87
201, 202	88	88
204, 205	89	89
201, 202	90	90
204, 205	91	91
201, 202	92	92
204, 205	93	93
201, 202	94	94
204, 205	95	95
201, 202	96	96
204, 205	97	97
201, 202	98	98
204, 205	99	99
201, 202	100	100
204, 205	101	101
201, 202	102	102
204, 205	103	103
201, 202	104	104
204, 205	105	105
201, 202	106	106
204, 205	107	107
201, 202	108	108
204, 205	109	109
201, 202	110	110
204, 205	111	111
201, 202	112	112
204, 205	113	113
201, 202	114	114
204, 205	115	115
201, 202	116	116
204, 205	117	117
201, 202	118	118
204, 205	119	119
201, 202	120	120
204, 205	121	121
201, 202	122	122
204, 205	123	123
201, 202	124	124
204, 205	125	125
201, 202	126	126
204, 205	127	127
201, 202	128	128
204, 205	129	129
201, 202	130	130
204, 205	131	131
201, 202	132	132
204, 205	133	133
201, 202	134	134
204, 205	135	135
201, 202	136	136
204, 205	137	137
201, 202	138	138
204, 205	139	139
201, 202	140	140
204, 205	141	141
201, 202	142	142
204, 205	143	143
201, 202	144	144
204, 205	145	145
201, 202	146	146
204, 205	147	147
201, 202	148	148
204, 205	149	149
201, 202	150	150
204, 205	151	151
201, 202	152	152
204, 205	153	153
201, 202	154	154
204, 205	155	155
201, 202	156	156
204, 205	157	157
201, 202	158	158
204, 205	159	159
201, 202	160	160
204, 205	161	161
201, 202	162	162
204, 205	163	163
201, 202	164	164
204, 205	165	165
201, 202	166	166
204, 205	167	167
201, 202	168	168
204, 205	169	169
201, 202	170	170
204, 205	171	171
201, 202	172	172
204, 205	173	173
201, 202	174	174
204, 205	175	175
201, 202	176	176
204, 205	177	177
201, 202	178	178
204, 205	179	179
201, 202	180	180
204, 205	181	181
201, 202	182	182
204, 205	183	183
201, 202	184	184
204, 205	185	185



FUTURE RENOVATION (N.I.C.)
SCALE: 1/8" = 1'-0"

- NOTE:
1. PROVIDE LABOR AND MATERIAL TO RECONNECT EXISTING EXTERIOR LIGHTS TO P/AD L1B.
 2. PROVIDE LABOR AND MATERIAL TO RECONNECT REMAINING EXISTING LIGHT FIXTURES IN RMS. REUSE EXISTING SWITCH (OUTLET) AND PLATE(S). PROVIDE NEW SWITCHES AND PLATE(S).
 3. 3 #12-1/2" C. LIGHTS TO P/AD. L1B-2.



MAIN FLOOR PLAN - LIGHTING
SCALE: 1/8" = 1'-0"

** PROVIDE Ckt. BRKR. AS REQUIRED

DESCRIPTION	QUANTITY	UNIT
2 EXIT LIGHTS	2	EA
4 CORR. & STAIR LITS.	4	EA
10 CORR. LITS. TO RMS	10	EA
10 CORR. LITS. TO STAIRS	10	EA
10 CORR. LITS. TO HALLS	10	EA
10 CORR. LITS. TO OFFICES	10	EA
10 CORR. LITS. TO RESTROOMS	10	EA
10 CORR. LITS. TO STORAGE	10	EA
10 CORR. LITS. TO MEETING	10	EA
10 CORR. LITS. TO CONFERENCE	10	EA
10 CORR. LITS. TO BREAK	10	EA
10 CORR. LITS. TO RECEPTION	10	EA
10 CORR. LITS. TO WAITING	10	EA
10 CORR. LITS. TO LOBBY	10	EA
10 CORR. LITS. TO ELEVATOR	10	EA
10 CORR. LITS. TO STAIRWELL	10	EA
10 CORR. LITS. TO MECHANICAL	10	EA
10 CORR. LITS. TO ELECTRICAL	10	EA
10 CORR. LITS. TO PLUMBING	10	EA
10 CORR. LITS. TO HVAC	10	EA
10 CORR. LITS. TO ROOF	10	EA
10 CORR. LITS. TO GROUND	10	EA
10 CORR. LITS. TO EXTERIOR	10	EA
10 CORR. LITS. TO INTERIOR	10	EA
10 CORR. LITS. TO CEILING	10	EA
10 CORR. LITS. TO WALL	10	EA
10 CORR. LITS. TO FLOOR	10	EA
10 CORR. LITS. TO WINDOW	10	EA
10 CORR. LITS. TO DOOR	10	EA
10 CORR. LITS. TO SIGN	10	EA
10 CORR. LITS. TO ART	10	EA
10 CORR. LITS. TO MIRROR	10	EA
10 CORR. LITS. TO PICTURE	10	EA
10 CORR. LITS. TO SCULPTURE	10	EA
10 CORR. LITS. TO FURNITURE	10	EA
10 CORR. LITS. TO APPLIANCE	10	EA
10 CORR. LITS. TO FIXTURE	10	EA
10 CORR. LITS. TO ACCESSORY	10	EA
10 CORR. LITS. TO FINISH	10	EA
10 CORR. LITS. TO INSTALLATION	10	EA
10 CORR. LITS. TO MAINTENANCE	10	EA
10 CORR. LITS. TO REPLACEMENT	10	EA
10 CORR. LITS. TO UPGRADE	10	EA
10 CORR. LITS. TO MODERNIZATION	10	EA
10 CORR. LITS. TO RENOVATION	10	EA
10 CORR. LITS. TO RESTORATION	10	EA
10 CORR. LITS. TO REPAIR	10	EA
10 CORR. LITS. TO CLEANUP	10	EA
10 CORR. LITS. TO DEMOLITION	10	EA
10 CORR. LITS. TO CONSTRUCTION	10	EA
10 CORR. LITS. TO INSULATION	10	EA
10 CORR. LITS. TO DRYWALL	10	EA
10 CORR. LITS. TO PAINTING	10	EA
10 CORR. LITS. TO CARPETING	10	EA
10 CORR. LITS. TO TILING	10	EA
10 CORR. LITS. TO PLASTERING	10	EA
10 CORR. LITS. TO MASONRY	10	EA
10 CORR. LITS. TO WOODWORK	10	EA
10 CORR. LITS. TO METALWORK	10	EA
10 CORR. LITS. TO GLASSWORK	10	EA
10 CORR. LITS. TO FABRICATION	10	EA
10 CORR. LITS. TO ASSEMBLY	10	EA
10 CORR. LITS. TO TESTING	10	EA
10 CORR. LITS. TO COMMISSIONING	10	EA
10 CORR. LITS. TO OPERATIONAL	10	EA
10 CORR. LITS. TO MAINTENANCE	10	EA
10 CORR. LITS. TO REPAIR	10	EA
10 CORR. LITS. TO REPLACEMENT	10	EA
10 CORR. LITS. TO UPGRADE	10	EA
10 CORR. LITS. TO MODERNIZATION	10	EA
10 CORR. LITS. TO RENOVATION	10	EA
10 CORR. LITS. TO RESTORATION	10	EA
10 CORR. LITS. TO REPAIR	10	EA
10 CORR. LITS. TO CLEANUP	10	EA
10 CORR. LITS. TO DEMOLITION	10	EA
10 CORR. LITS. TO CONSTRUCTION	10	EA
10 CORR. LITS. TO INSULATION	10	EA
10 CORR. LITS. TO DRYWALL	10	EA
10 CORR. LITS. TO PAINTING	10	EA
10 CORR. LITS. TO CARPETING	10	EA
10 CORR. LITS. TO TILING	10	EA
10 CORR. LITS. TO PLASTERING	10	EA
10 CORR. LITS. TO MASONRY	10	EA
10 CORR. LITS. TO WOODWORK	10	EA
10 CORR. LITS. TO METALWORK	10	EA
10 CORR. LITS. TO GLASSWORK	10	EA
10 CORR. LITS. TO FABRICATION	10	EA
10 CORR. LITS. TO ASSEMBLY	10	EA
10 CORR. LITS. TO TESTING	10	EA
10 CORR. LITS. TO COMMISSIONING	10	EA
10 CORR. LITS. TO OPERATIONAL	10	EA
10 CORR. LITS. TO MAINTENANCE	10	EA
10 CORR. LITS. TO REPAIR	10	EA
10 CORR. LITS. TO REPLACEMENT	10	EA
10 CORR. LITS. TO UPGRADE	10	EA
10 CORR. LITS. TO MODERNIZATION	10	EA
10 CORR. LITS. TO RENOVATION	10	EA
10 CORR. LITS. TO RESTORATION	10	EA
10 CORR. LITS. TO REPAIR	10	EA
10 CORR. LITS. TO CLEANUP	10	EA
10 CORR. LITS. TO DEMOLITION	10	EA
10 CORR. LITS. TO CONSTRUCTION	10	EA
10 CORR. LITS. TO INSULATION	10	EA
10 CORR. LITS. TO DRYWALL	10	EA
10 CORR. LITS. TO PAINTING	10	EA
10 CORR. LITS. TO CARPETING	10	EA
10 CORR. LITS. TO TILING	10	EA
10 CORR. LITS. TO PLASTERING	10	EA
10 CORR. LITS. TO MASONRY	10	EA
10 CORR. LITS. TO WOODWORK	10	EA
10 CORR. LITS. TO METALWORK	10	EA
10 CORR. LITS. TO GLASSWORK	10	EA
10 CORR. LITS. TO FABRICATION	10	EA
10 CORR. LITS. TO ASSEMBLY	10	EA
10 CORR. LITS. TO TESTING	10	EA
10 CORR. LITS. TO COMMISSIONING	10	EA
10 CORR. LITS. TO OPERATIONAL	10	EA
10 CORR. LITS. TO MAINTENANCE	10	EA
10 CORR. LITS. TO REPAIR	10	EA
10 CORR. LITS. TO REPLACEMENT	10	EA
10 CORR. LITS. TO UPGRADE	10	EA
10 CORR. LITS. TO MODERNIZATION	10	EA
10 CORR. LITS. TO RENOVATION	10	EA
10 CORR. LITS. TO RESTORATION	10	EA
10 CORR. LITS. TO REPAIR	10	EA
10 CORR. LITS. TO CLEANUP	10	EA
10 CORR. LITS.		

COMMONWEALTH OF VIRGINIA
 PROFESSIONAL ENGINEERS
 JAMES I. HANOVER
 LICENSE NO. 2283

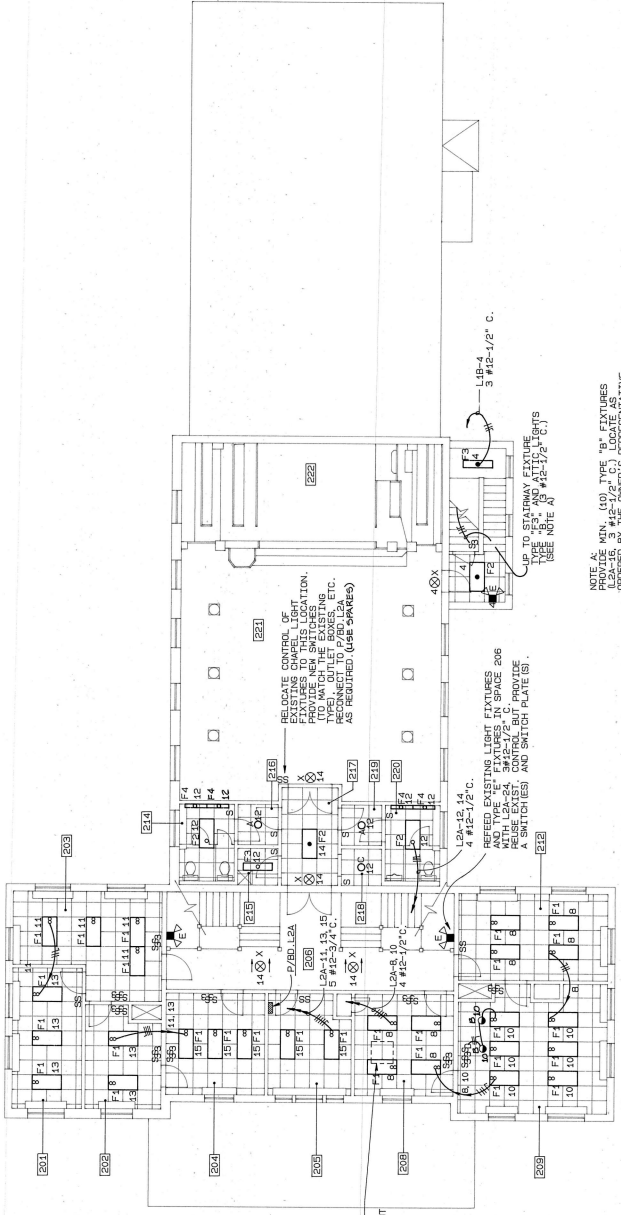
DATE: 4-22-93
 SHEET: E-7

HANOVER ENGINEERS P.C.
 CONSULTING ENGINEERS
 RICHMOND, VIRGINIA

PRESBYTERIAN HOME ALTERATIONS & ADDITIONS TO
 ADMINISTRATION BUILDING
 LYNCHBURG VIRGINIA

FAUBER
 A PROFESSIONAL CORPORATION
 ARCHITECTS
 P.O. BOX 362 FOREST, VA 24551 (804) 525-2948

UPPER PLAN - LIGHTING



NOTE A:
 PROVIDE MIN. (10) TYPE "B" FIXTURES
 WITH L2A-24, 94x12-1/2" C. SPACED AT
 12" ON CENTER. REFER TO MECHANICAL
 AFTER ALL MECH. EQUIP. HAS BEEN INSTALLED.

UPPER FLOOR PLAN - LIGHTING
 SCALE: 1/8" = 1'-0"

COMMONWEALTH OF VIRGINIA
 PROFESSIONAL ENGINEERS
 JAMES H. GARRIS
 CERTIFICATE NO. 2853
 2003

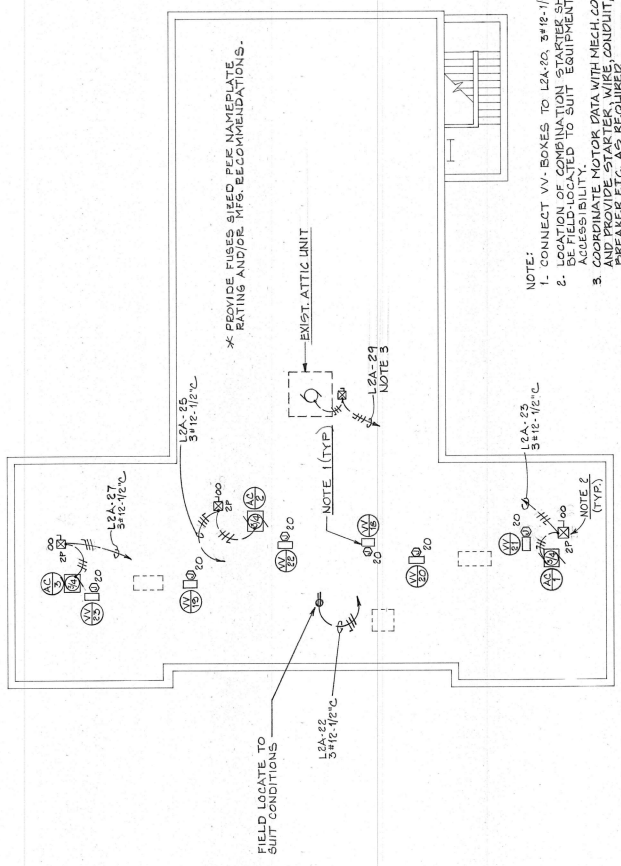
NUMBER: E-8
 SHEET: 4-24-91
 DATE: 4-24-91

HANOVER ENGINEERS & ARCHITECTS
 POWER ENGINEERS
 RICHMOND, VIRGINIA

RESIDENTIAL HOME ALTERATIONS & ADDITIONS FOR
 ADMINISTRATION BUILDING
 LYNCHBURG, VIRGINIA

FAUBER
 ARCHITECTS
 P.O. BOX 362, FORKST, VA 24551 (804) 526-2948

ATTIC PLAN - POWER



ATTIC PLAN - POWER
 SCALE: 1/8" = 1'-0"

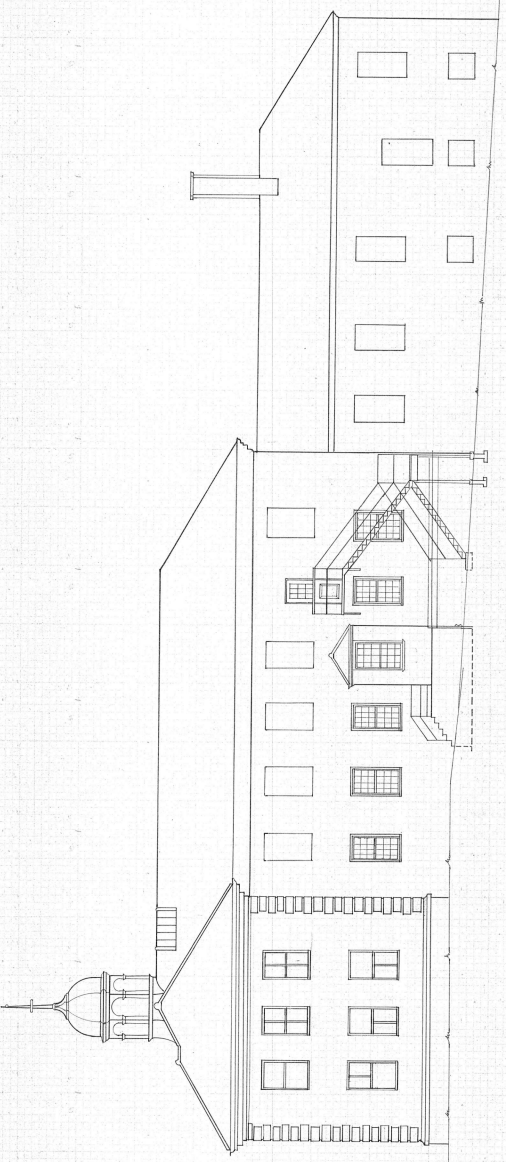
DATE	1-22-81
BY	MD-2
PROJECT	RESIDENTIAL HOME
SHEET	MD-2

RESIDENTIAL HOME
 ATTRACTIONS & PROVISIONS TO:
 ADMINISTRATION BLDG.
 VIRGINIA

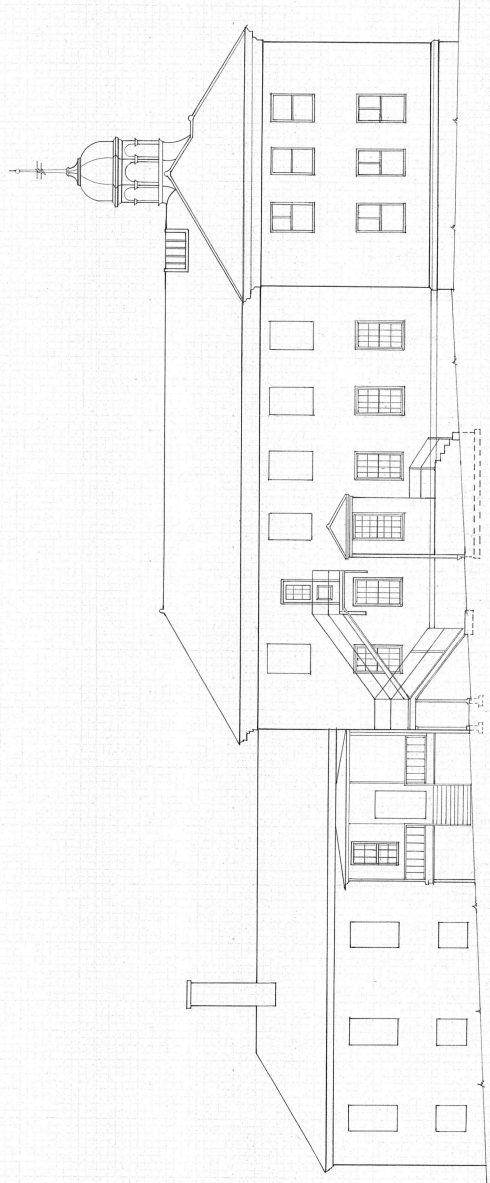
FAUBER
 ARCHITECTS
 P.O. BOX 382, FOREST, VA 24551 (804) 525-2948

RENDERED PERVIOUS
 ELEVATIONS

proposed windows

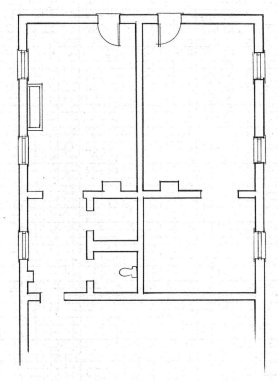


EAST ELEVATION
 SCALE: 1/8" = 1'-0"

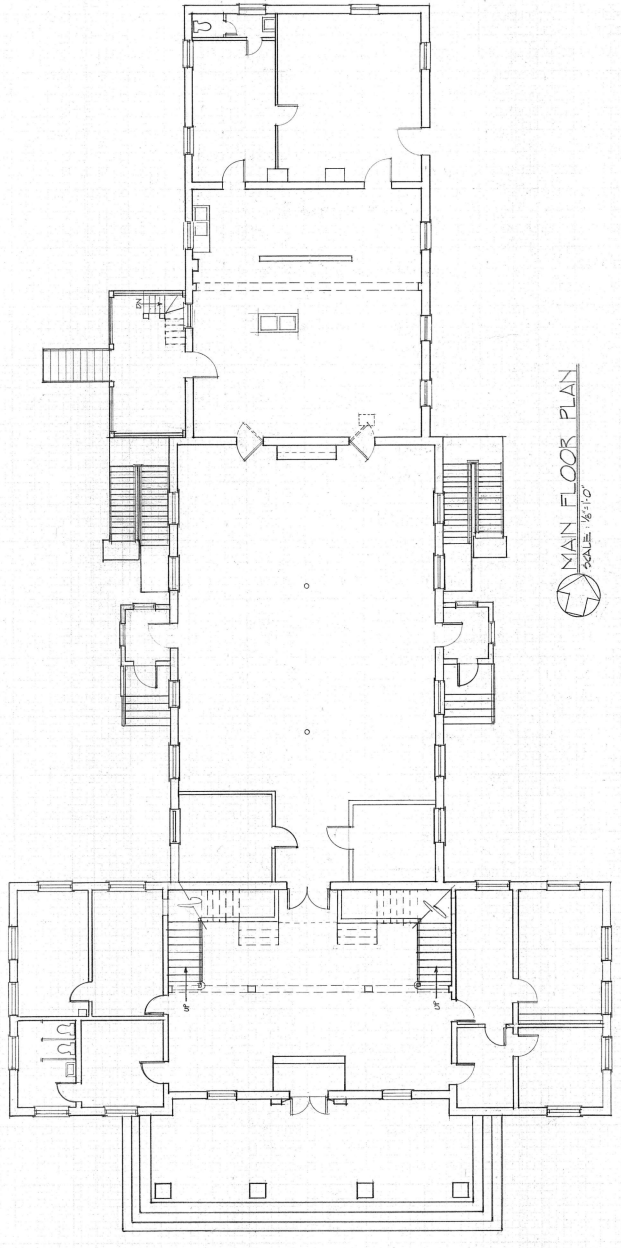


WEST ELEVATION
 SCALE: 1/8" = 1'-0"

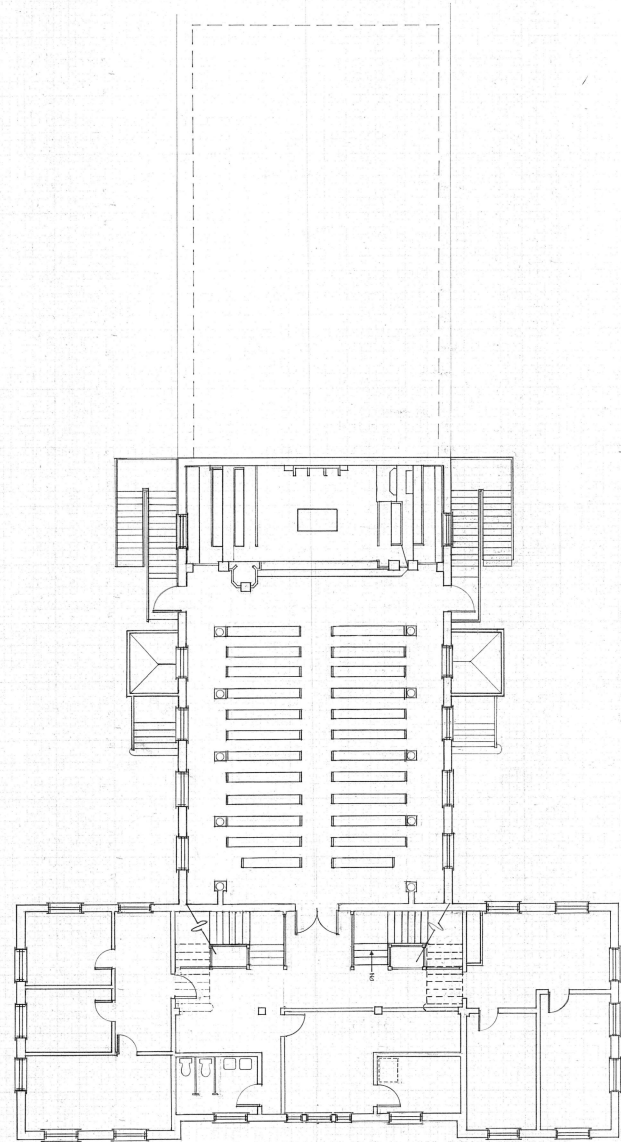
BASEMENT FLOOR PLAN
 SCALE: 1/8" = 1'-0"



MAIN FLOOR PLAN
 SCALE: 1/8" = 1'-0"



UPPER FLOOR PLAN
 SCALE: 1/8" = 1'-0"



NUMBER	SHEET
1/24	1
DATE	

ADMINISTRATION BUILDING
 PRESBYTERIAN HOME ALTERATIONS & ADDITIONS TO
 LYNCHBURG VIRGINIA

FAUBER
 ARCHITECTS
 A PROFESSIONAL CORPORATION
 P.O. BOX 362, FOREST, VA 24551 (804) 525-2948

MAIN FLOOR PLAN

MAIN FLOOR PLAN
 SCALE: 1/8" = 1'-0"

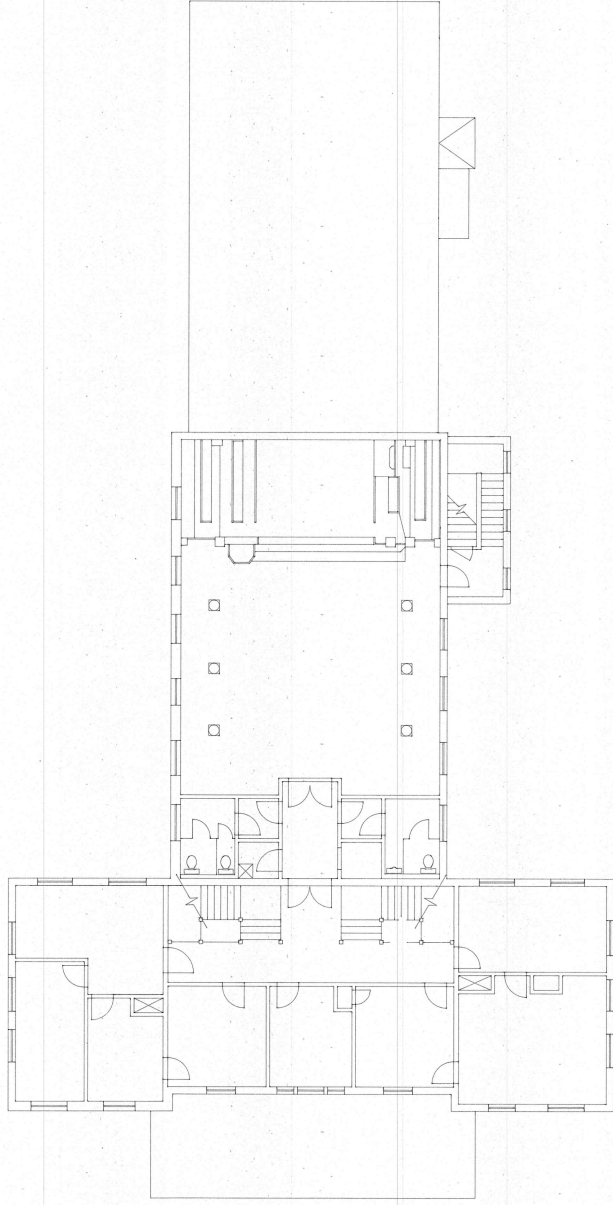


SHEET	
NUMBER	
DATE	

ADMINISTRATION BUILDING
 PRESBYTERIAN HOME ALTERATIONS & ADDITIONS TO
 LYNCHBURG VIRGINIA

FAUBER
 A PROFESSIONAL CORPORATION
 ARCHITECTS
 P. O. BOX 362, FOREST, VA 24551 (804) 525-2948

UPPER FLOOR PLAN



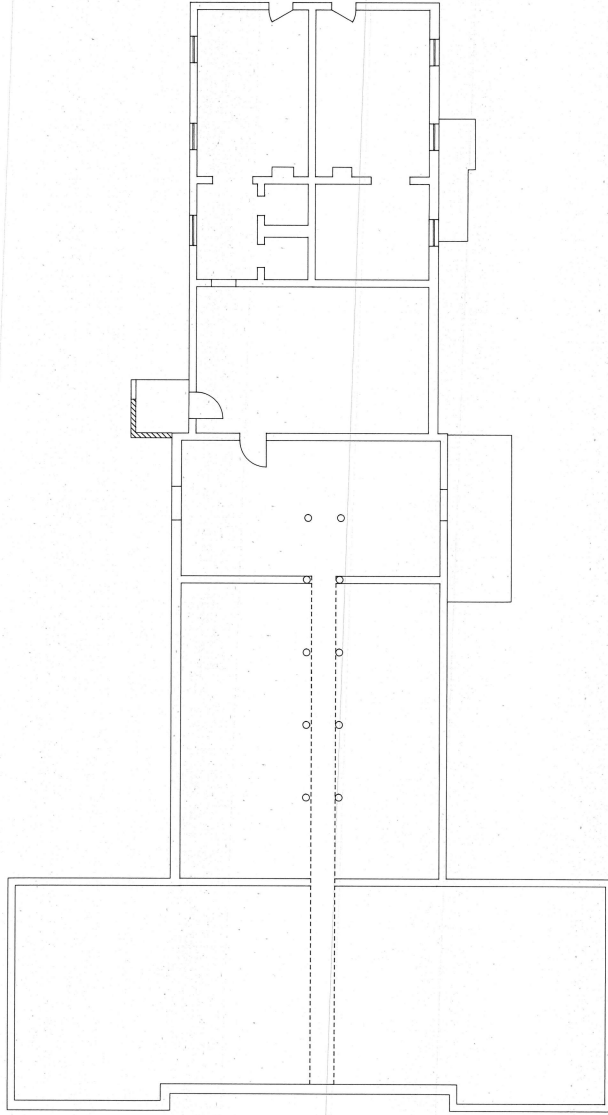
UPPER FLOOR PLAN
 SCALE: 1/8" = 1'-0"

BASEMENT FLOOR PLAN

FAUBER
A PROFESSIONAL CORPORATION
ARCHITECTS
P.O. BOX 362, FOREST, VA 24551 (804) 525-2948

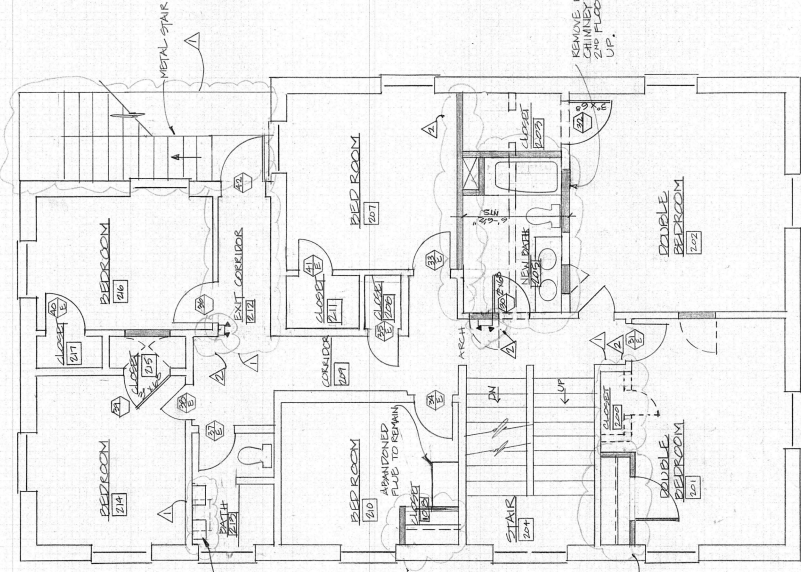
PRESBYTERIAN HOME ALTERATIONS & ADDITIONS TO
ADMINISTRATION BUILDING
VIRGINIA
Lynchburg

NUMBER	SHEET
DATE	

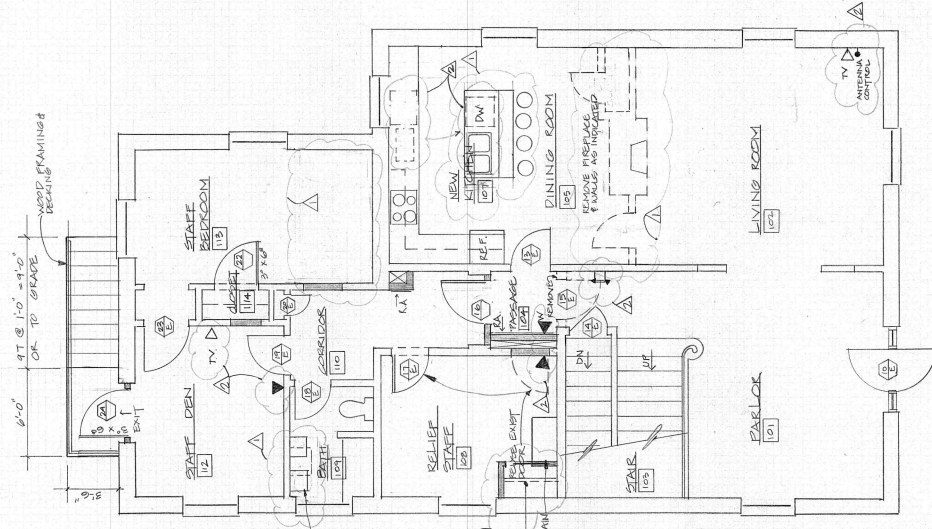


BASEMENT FLOOR PLAN
SCALE: 1/8" = 1'-0"

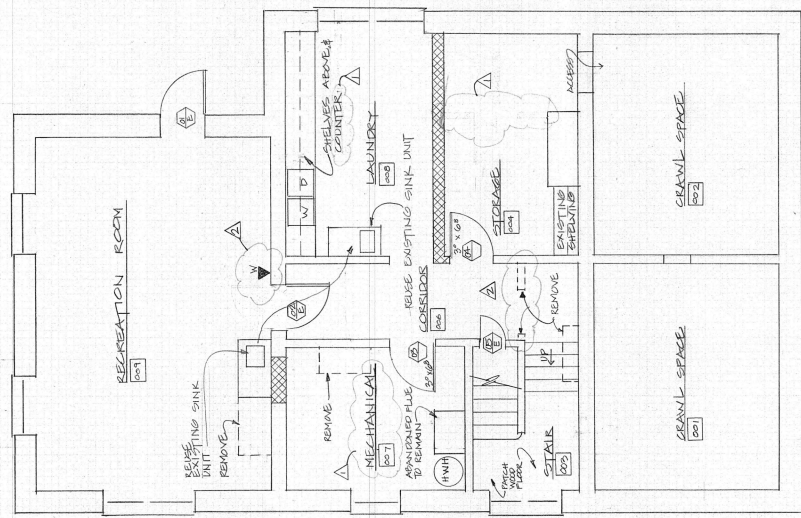
DATE	6-21-01
REVISION	15-01
SHEET	A-1

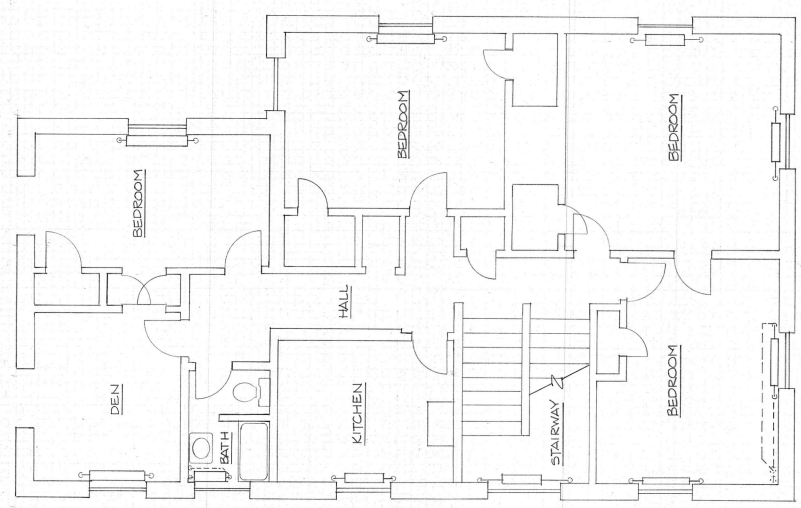


SECOND FLOOR PLAN
1/4" = 1'-0"

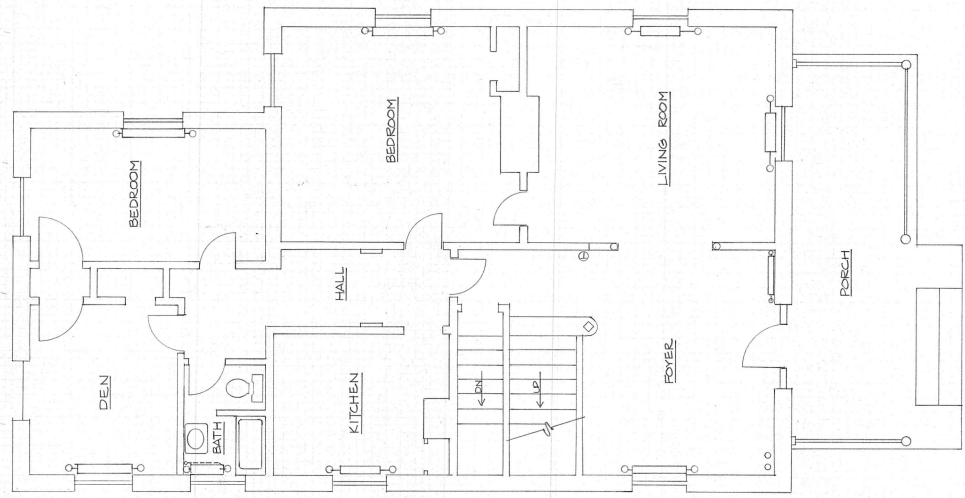


FIRST FLOOR PLAN
1/4" = 1'-0"





EXISTING SECOND FLOOR PLAN
SCALE = 1/4" = 1'-0"



EXISTING FIRST FLOOR PLAN
SCALE = 1/4" = 1'-0"

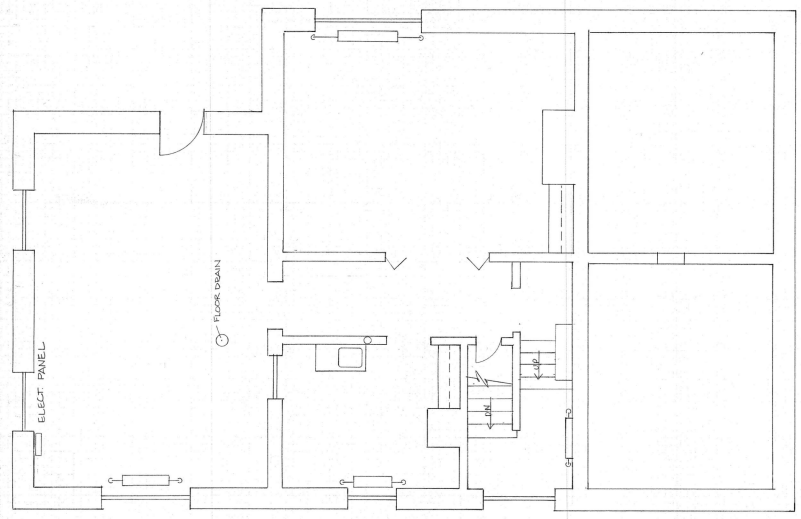
NUMBER
1555
DATE
1-14-99

SHEET

ALTERATIONS AND ADDITIONS TO TERRY COTTAGE, FOR:
PRESBYTERIAN HOME
LYNCHBURG,
VIRGINIA

FAUBER
ARCHITECTS
P.O. BOX 382, FOREST, VA 24551 (804) 525-2948

EXISTING FLOOR PLAN
SCALE: 1/4" = 1'-0"



EXISTING BASEMENT FLOOR PLAN
SCALE: 1/4" = 1'-0"