

DOOR SCHEDULE

NOOR	TYPE	WIDTH	HEIGHT	THICK	FRAME	JAMB	LABEL
101	A	3'-0"	7'-0"	1 3/4"	4	4	D
102	A	3'-0"	7'-0"	1 3/4"	5	5	D
103	B	3'-0"	7'-0"	1 3/4"	2	2	D

DOOR SCHEDULE

NOOR	TYPE	WIDTH	HEIGHT	THICK	FRAME	JAMB	LABEL
201	B	3'-0"	7'-0"	1 3/4"	3	3	D
202	B	3'-0"	7'-0"	1 3/4"	1	1	D
203	B	3'-0"	7'-0"	1 3/4"	1	1	D
204	B	3'-0"	7'-0"	1 3/4"	1	1	D
205	C	3'-0"	7'-0"	1 3/4"	1	1	D
206	C	3'-0"	7'-0"	1 3/4"	1	1	D
207	C	3'-0"	7'-0"	1 3/4"	1	1	D
208	D	4'-0"	7'-0"	1 3/4"	1	1	D
209	B	4'-0"	7'-0"	1 3/4"	1	1	D
210	B	3'-0"	7'-0"	1 3/4"	1	1	D
211	B	3'-0"	7'-0"	1 3/4"	1	1	D
212	B	3'-0"	7'-0"	1 3/4"	1	1	D
213	B	3'-0"	7'-0"	1 3/4"	1	1	D
214	B	3'-0"	7'-0"	1 3/4"	1	1	D
215	B	3'-0"	7'-0"	1 3/4"	1	1	D

FINISH SCHEDULE

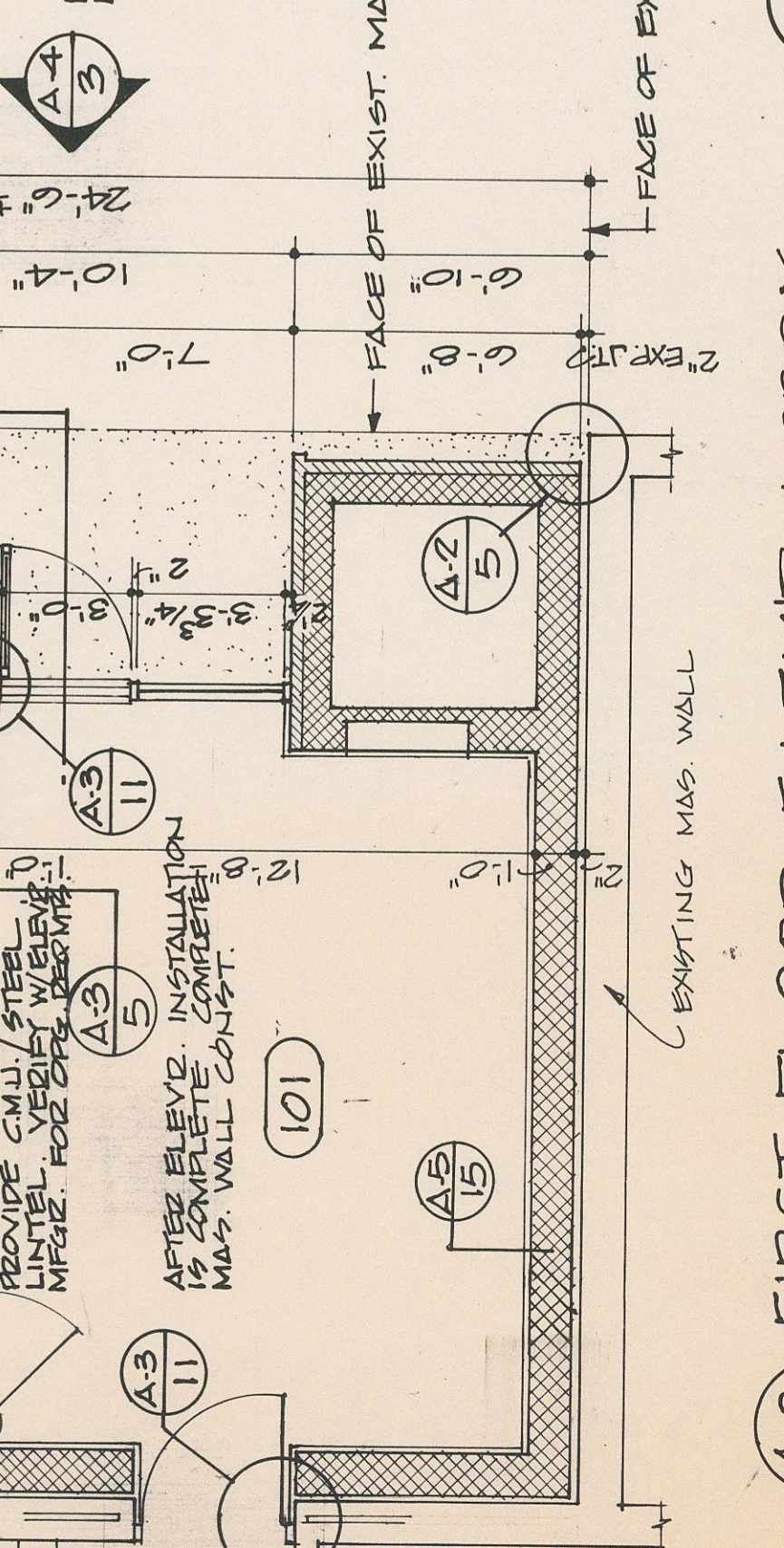
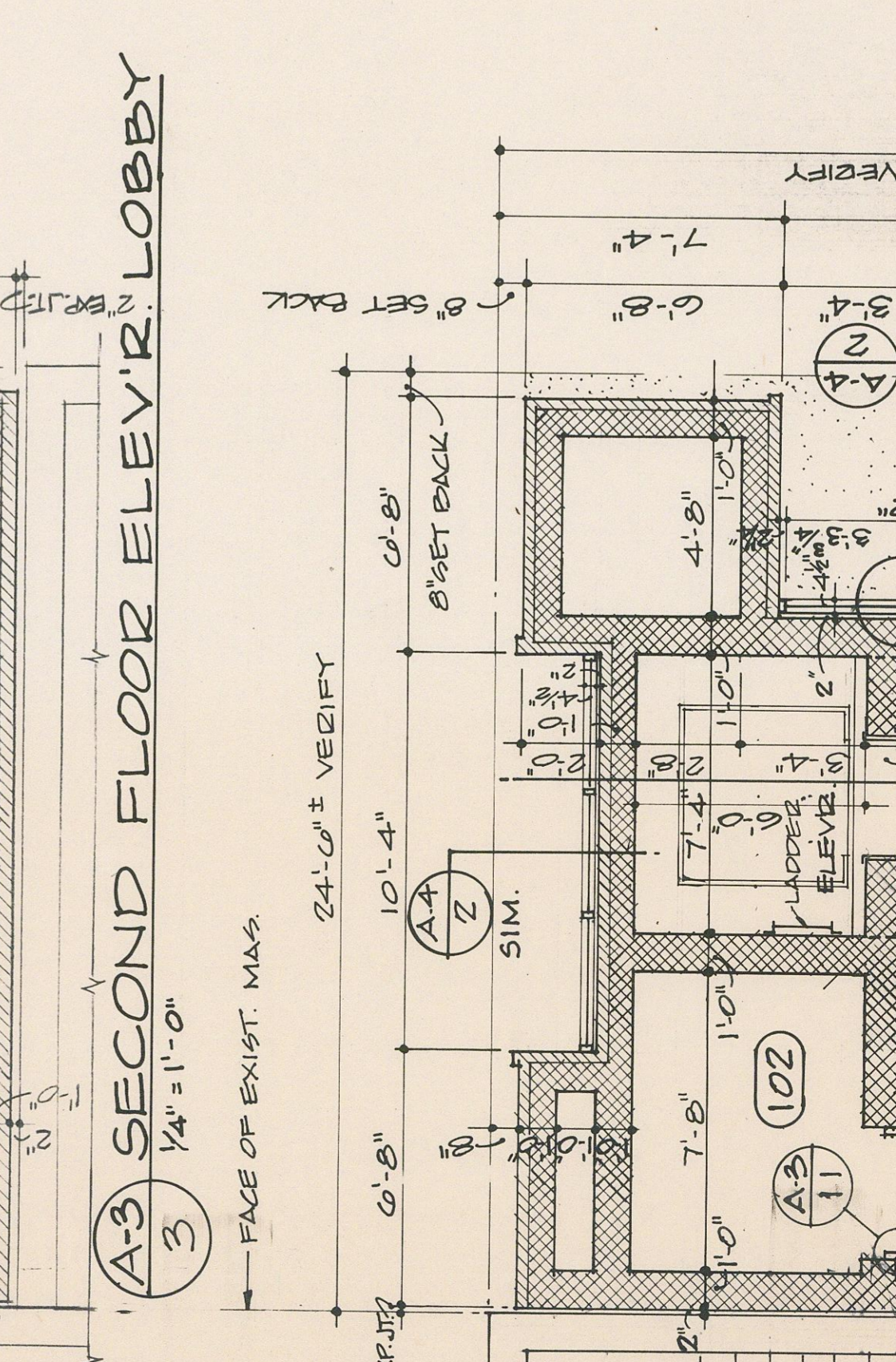
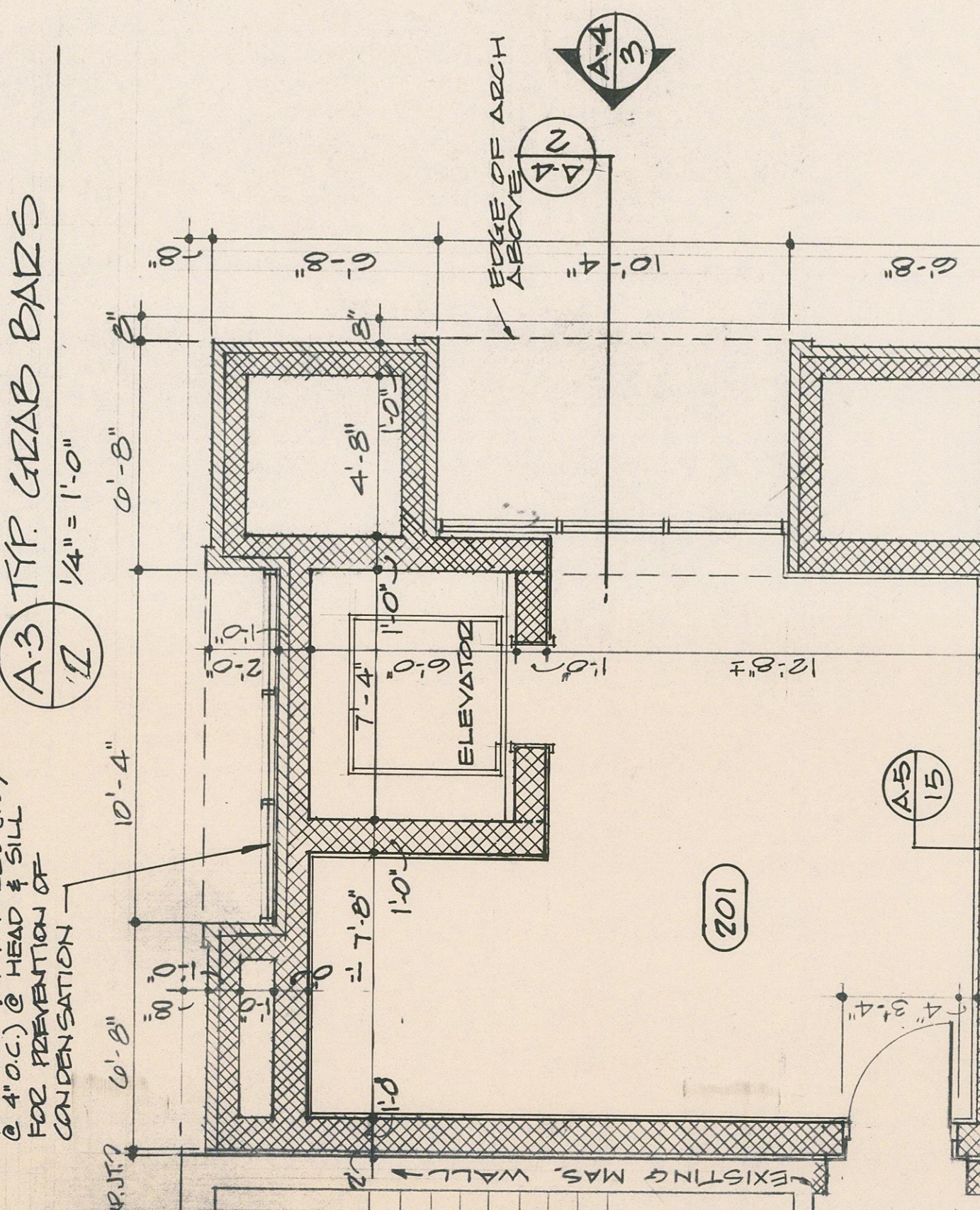
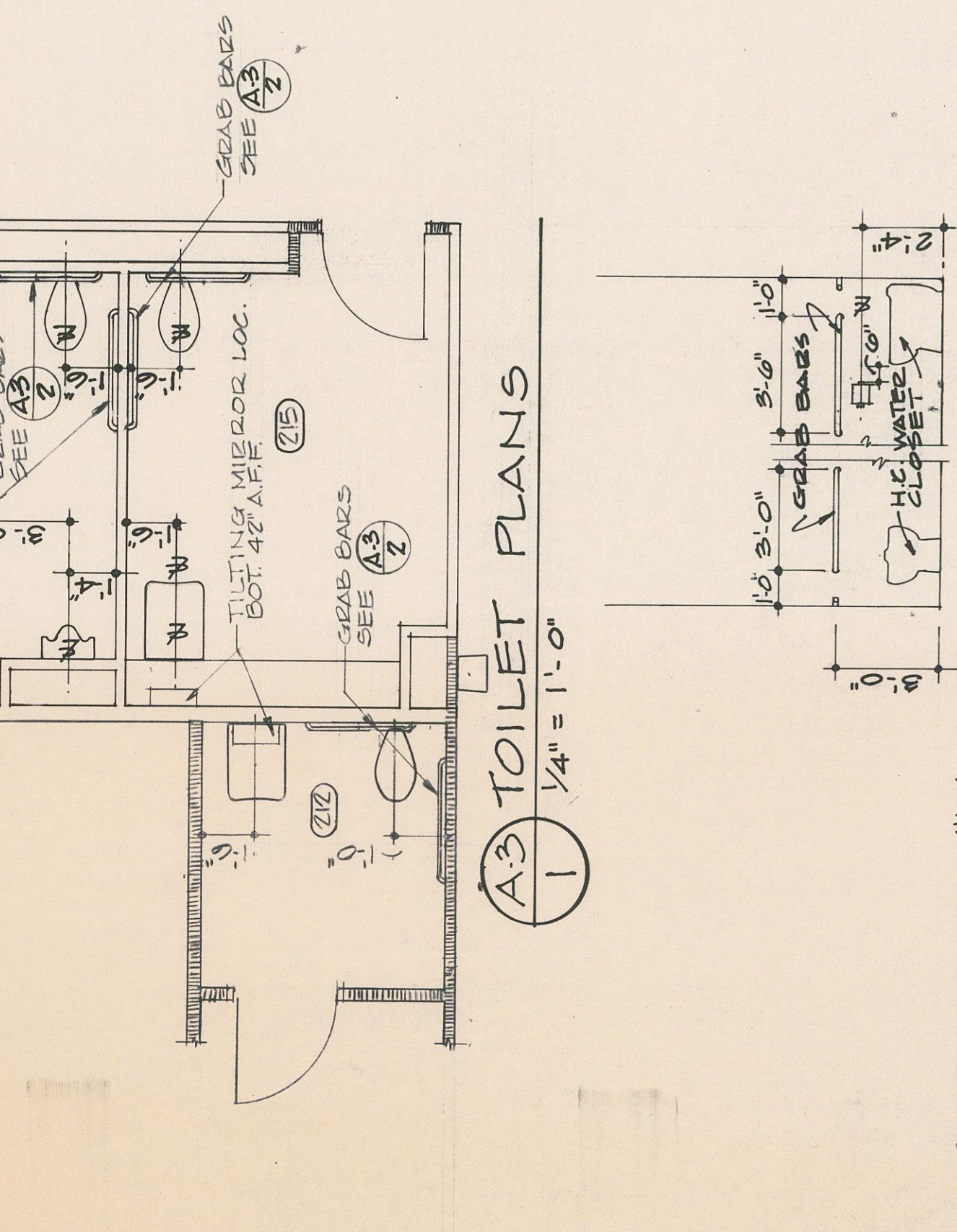
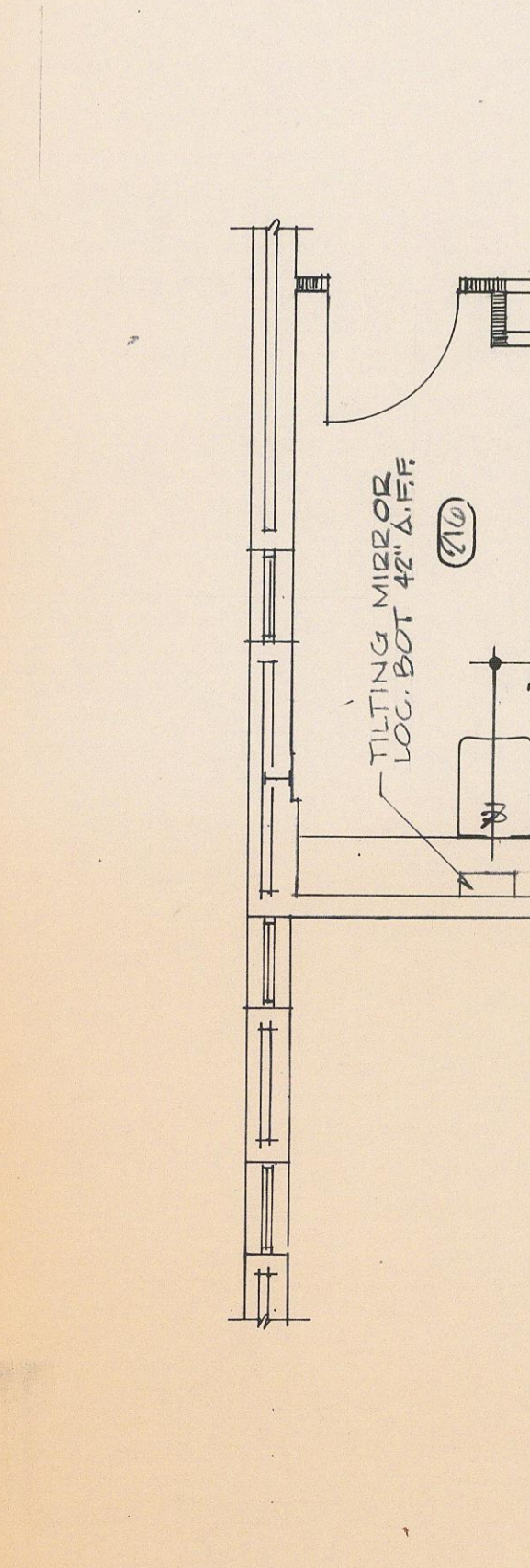
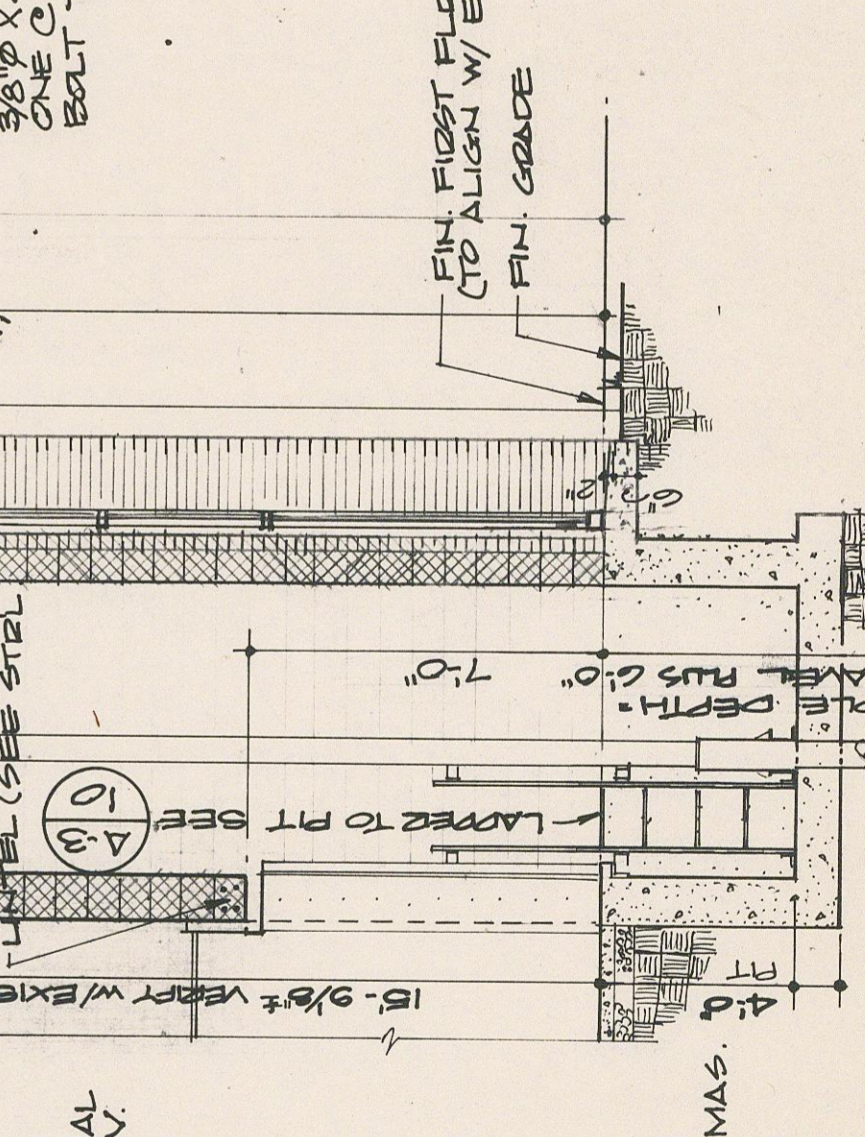
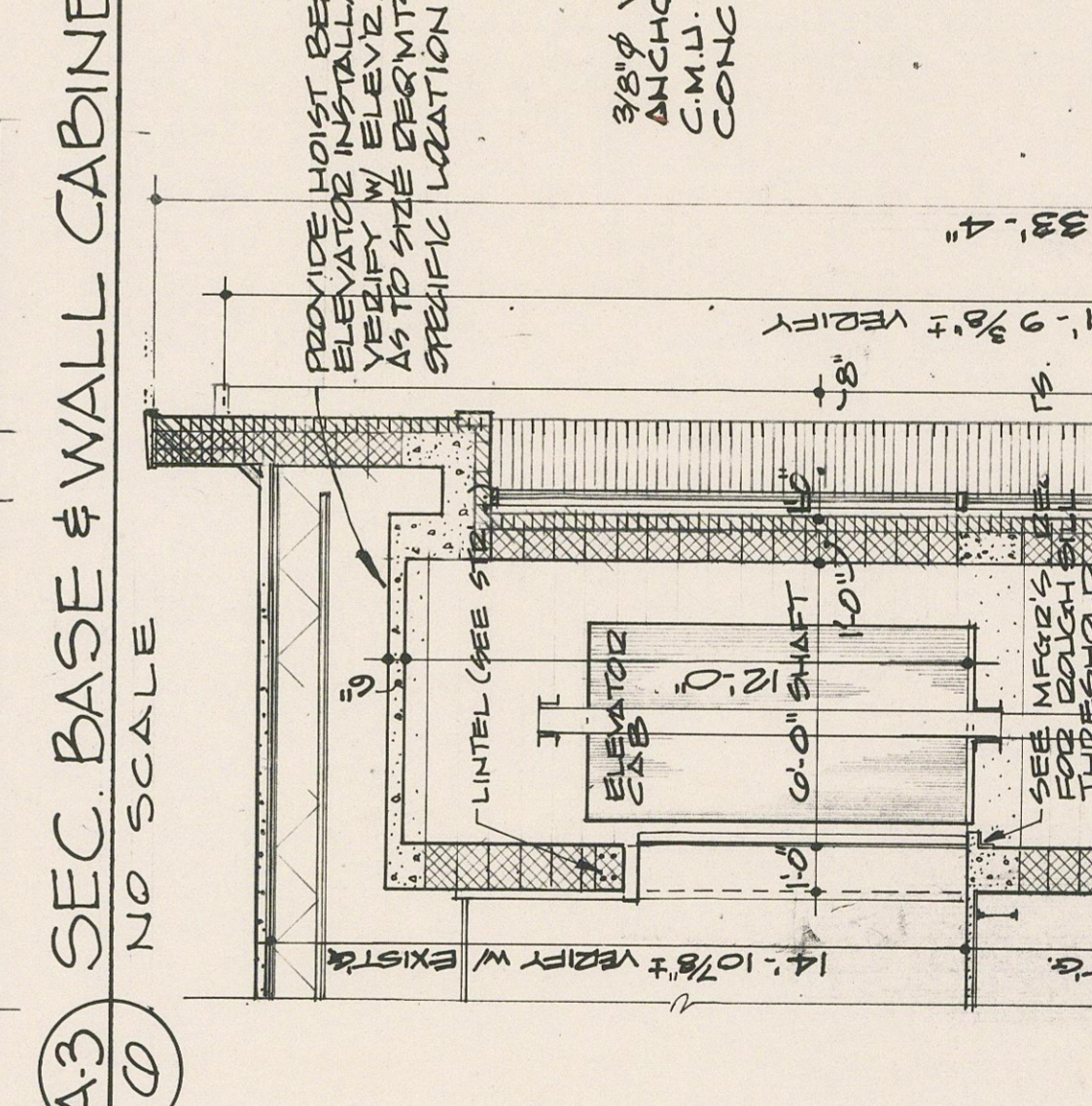
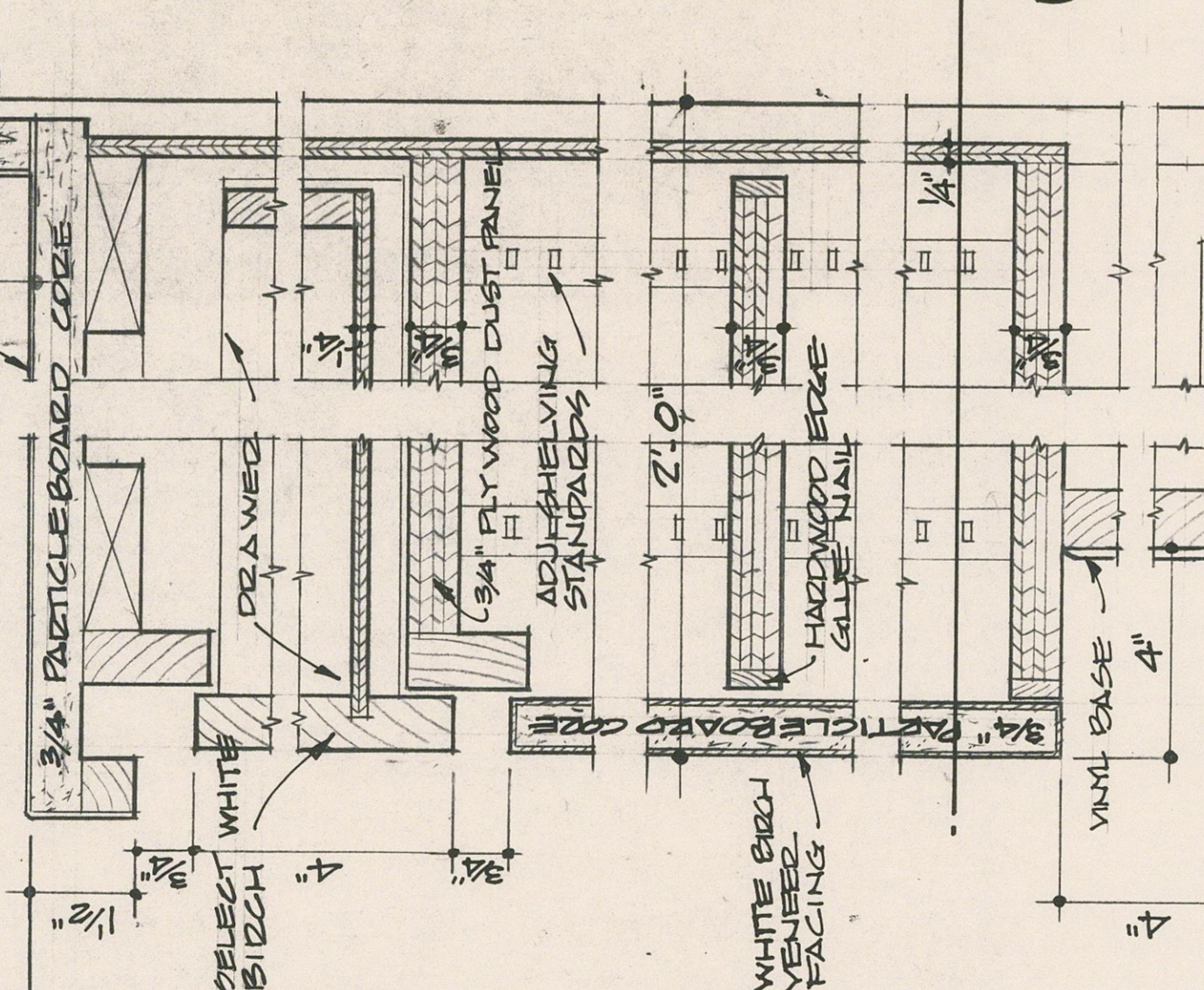
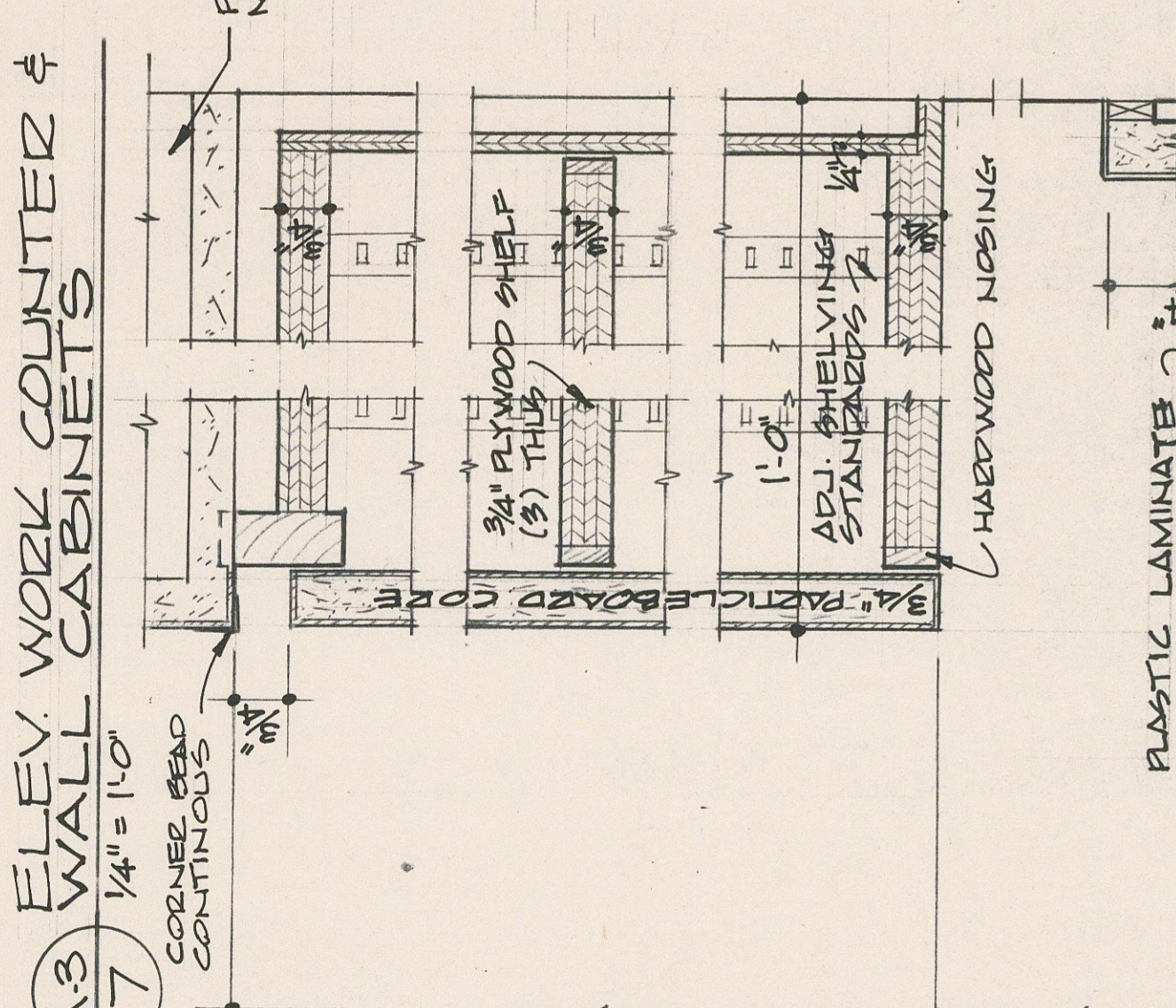
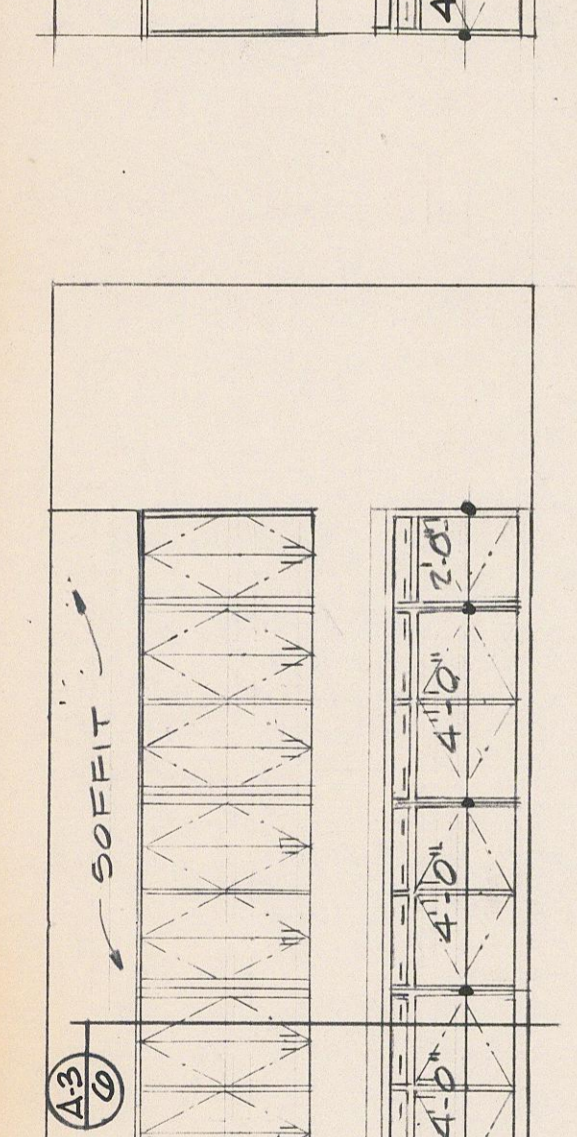
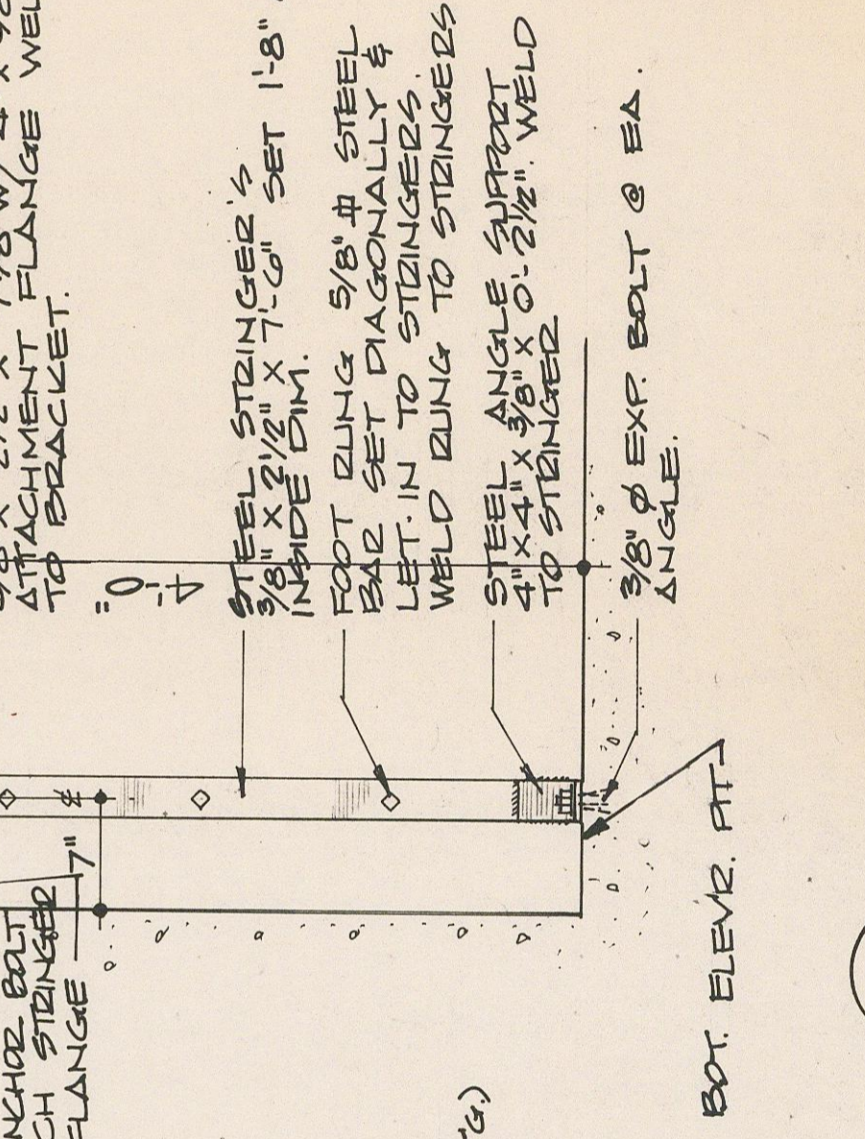
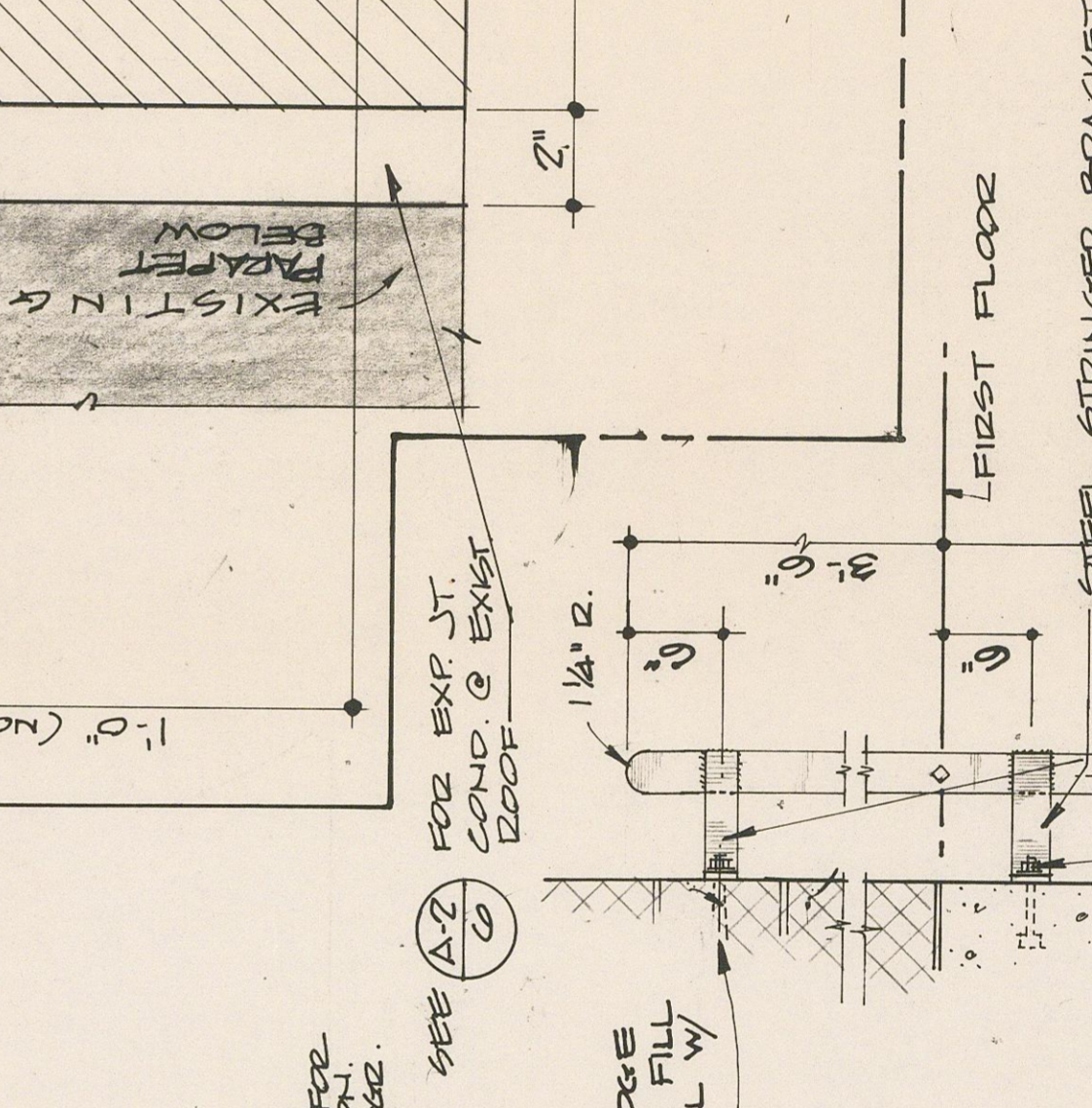
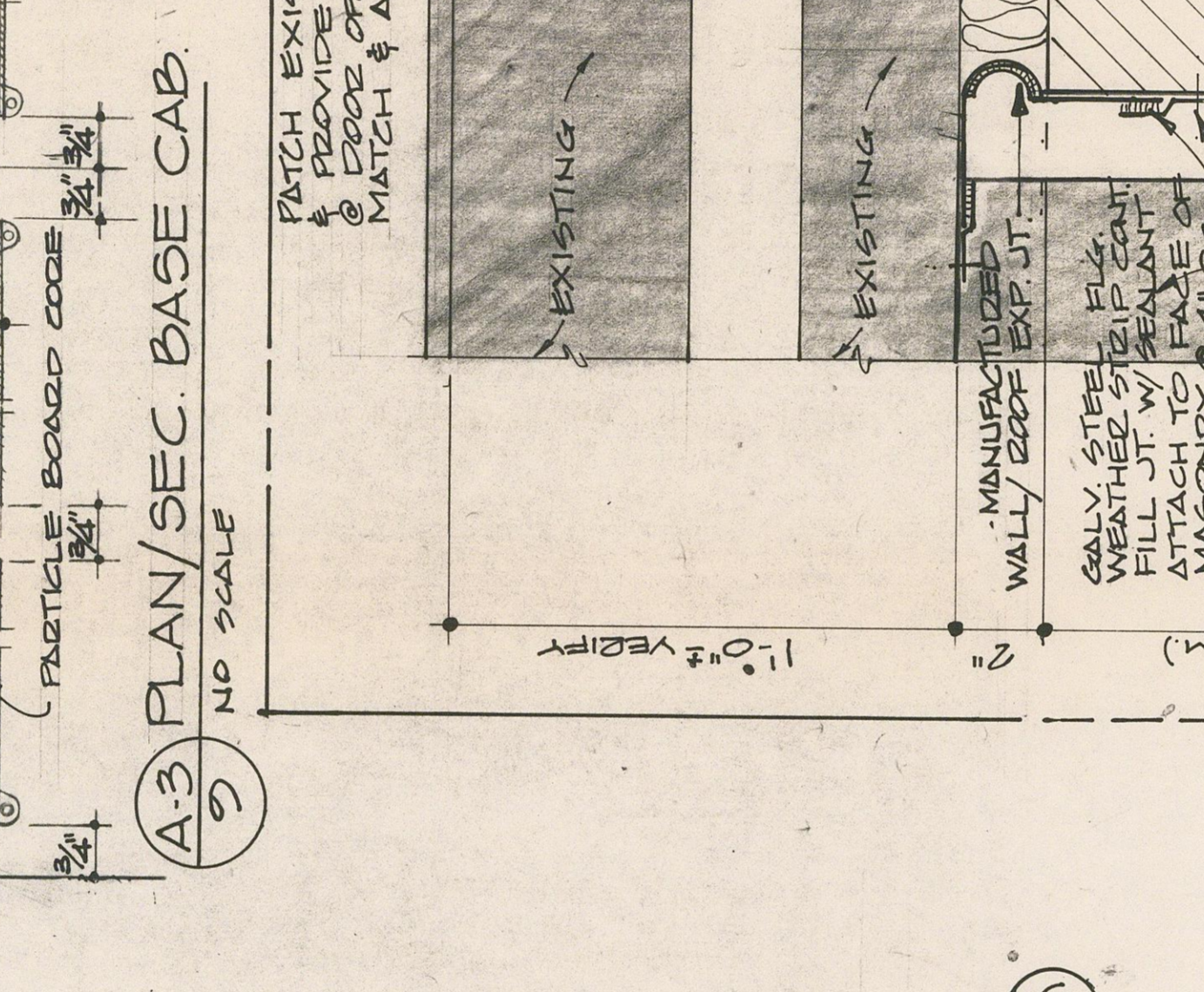
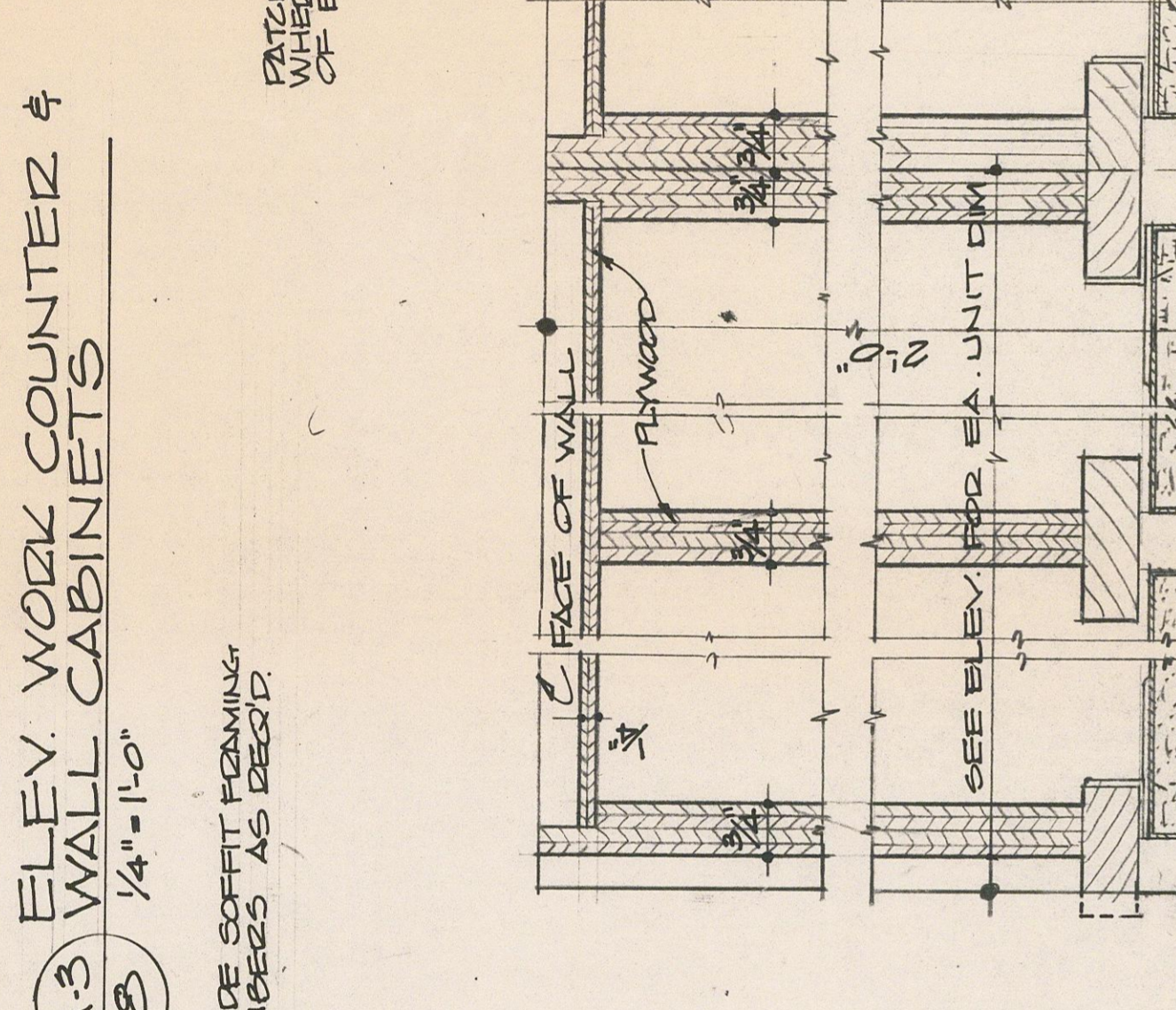
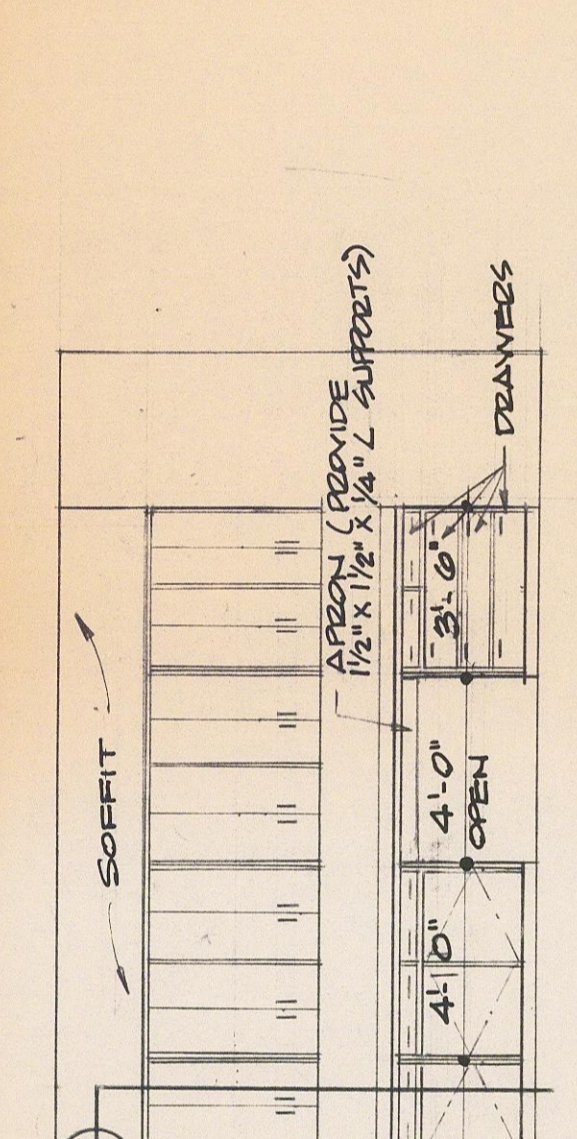
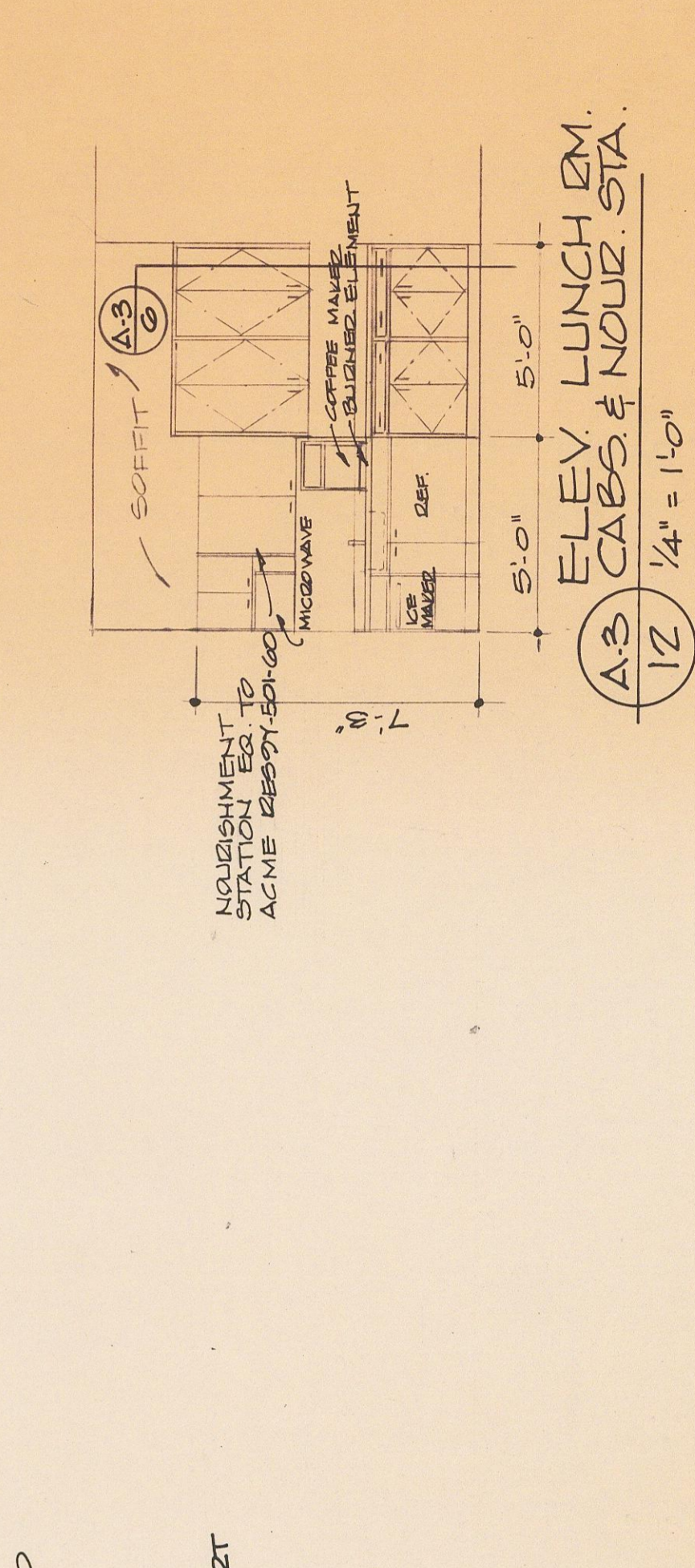
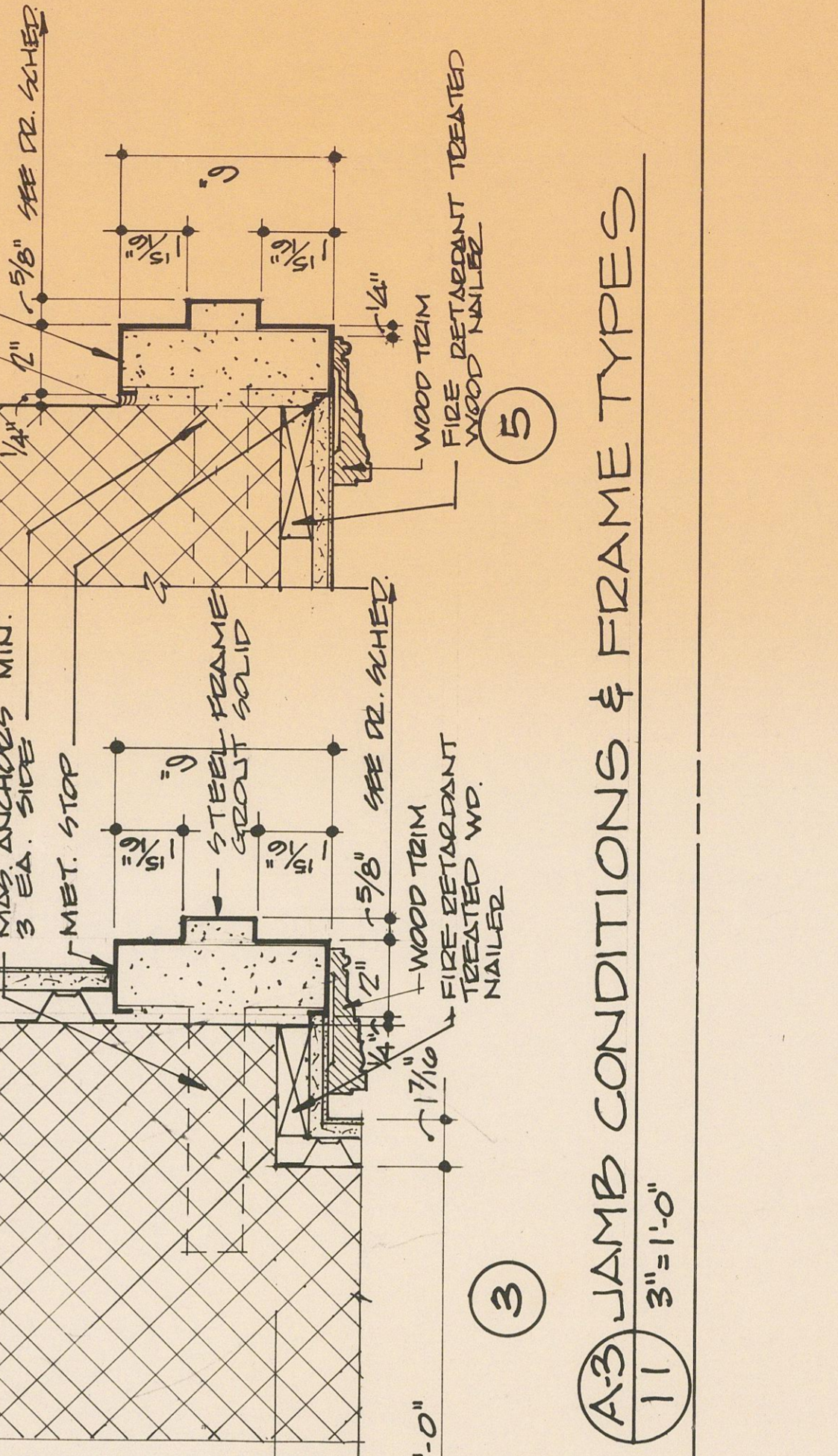
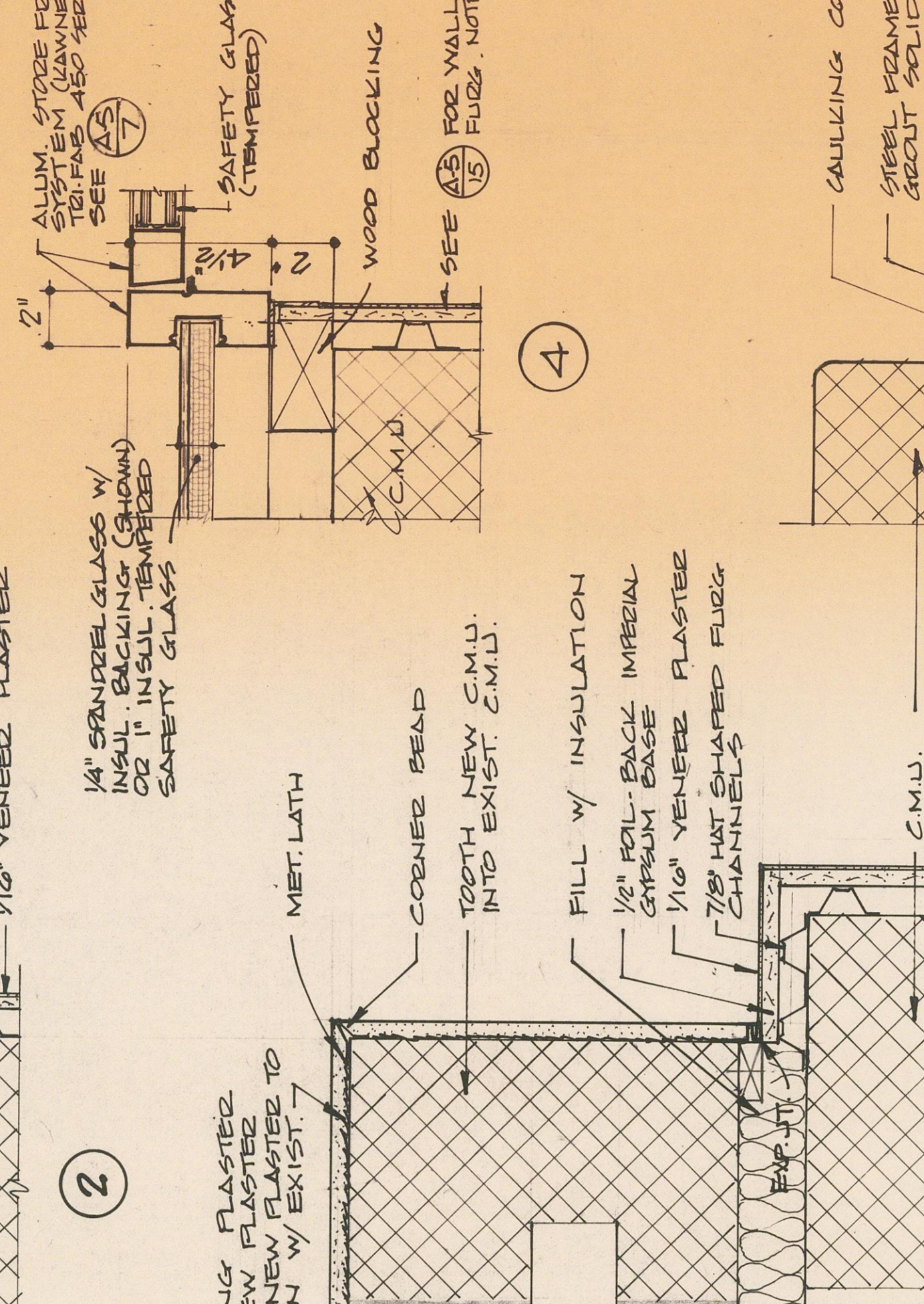
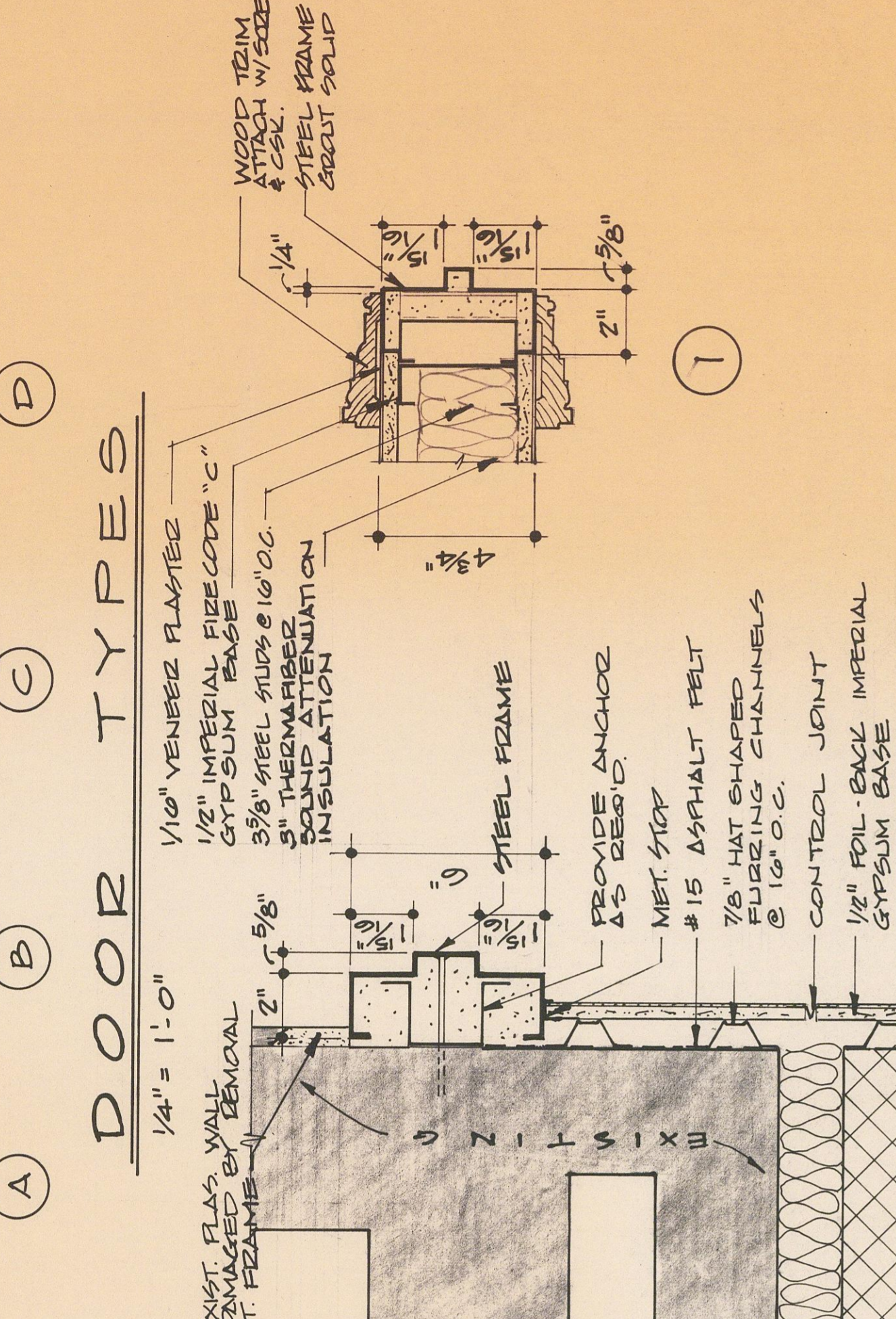
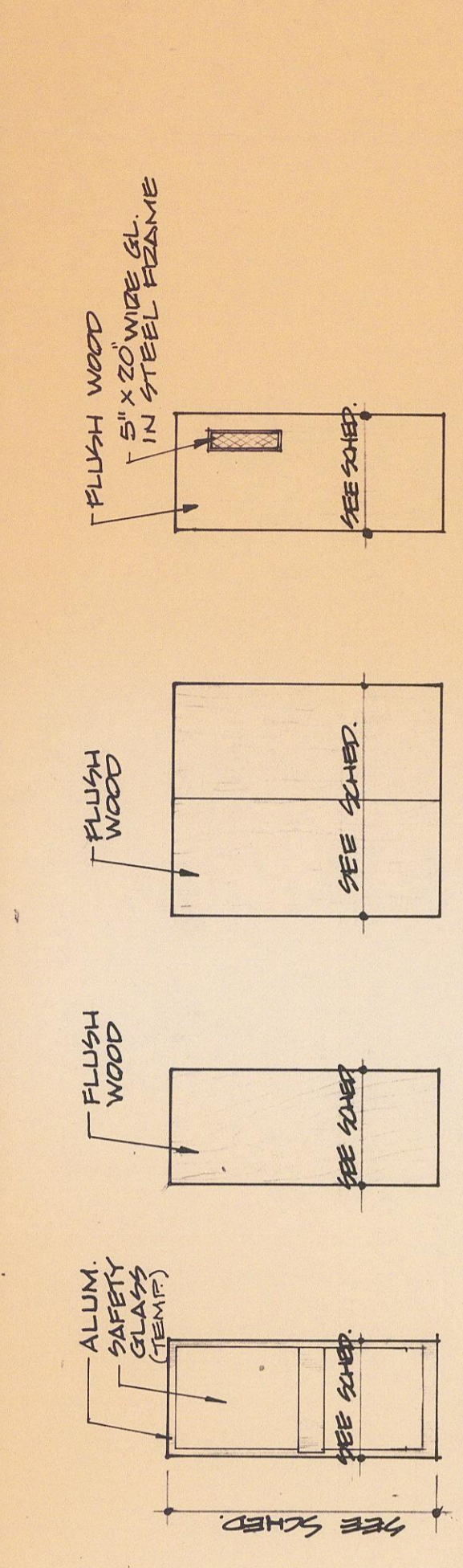
SPACE	FLOOR	BASE	WALLS	CEILING	CEILING HEIGHT	NOTES
101	C	E	G	S	10'-1"	4.
201	C	E	G	S	10'-8"	
202	C	E	K	S	10'-0"	
203	C	E	G	N	8'-0"	
204	C	E	G	N	8'-0"	
205	A	D	G	N	EXIST. 11, 3.	
206	A	D	G	N	EXIST. 11, 3.	
207	A	D	H	P	8'-0"	1, 4.
208	A	D	G	N	8'-0"	1.
209	A	D	G	N	10'-0"	1.
210	A	D	G	N	10'-0"	1.
211	B	D	G	N	10'-0"	1.
212	B	D	G	N	10'-0"	1.
213	A	D	L	N	10'-0"	1.
214	C	E	G	N	EXIST. 3.	
215	C	E	G	N	EXIST. 3.	
S-1	R	F	F	H	EXIST. 3.	
S-2	A	D	H	H	EXIST. 3.	

FINISH LEGEND

- A RESIDENT TILE
- B SHEET VINYL
- C CARPET
- D BURR
- E WOOD
- F CERAMIC (MATCH EXISTING)
- G PAINTED VENEER PLASTER
- H PAINTED EXISTING PLASTER
- I PAINTED MASONRY
- J PAINTED VENEER PLASTER ABOVE CHAIR RAIL & VINYL WALL
- K COVERING BELOW CHAIR RAIL
- L EPOXY PAINTED VENEER PLASTER
- M EPOXY PAINTED MASONRY
- N SUSPENDED ACoustICAL TILE
- O PAINTED GYPSUM BOARD
- P EXISTING EXISTING PLASTER
- Q EXISTING CERAMIC TILE
- R WOOD FACED REGULAR 2X2' CLG. TILE
- S CONCRETE W/ SEALER

FINISH NOTES

- BASE SHALL HAVE COVE & AREAS RECEIVING CABINET & TOILETS & OTHER FINISHES. ALL INSP. & CLIPPING CORNERS SHALL BE FINISHED & INSTALLED.
- VINYL / BURR BASE.
- REPAIR EXIST. PLAS. CLG. FINISH TO MATCH & ALIGN W/ EXIST. BRONZE NEW PLAS. CLG. & WSP SYSTEM WHERE NONE EXISTS.
- REMOVE GYP. BO. SUBS. SYSTEM (INCLUDES 1/2" GYP. BO. & FLOORING & CEILING).



These construction documents are for use in connection with the project described above. They are to be used in conjunction with the specifications and contract documents. The user shall indemnify and hold the architect harmless from and against all claims, damages, and expenses arising out of or resulting from the use of these documents.