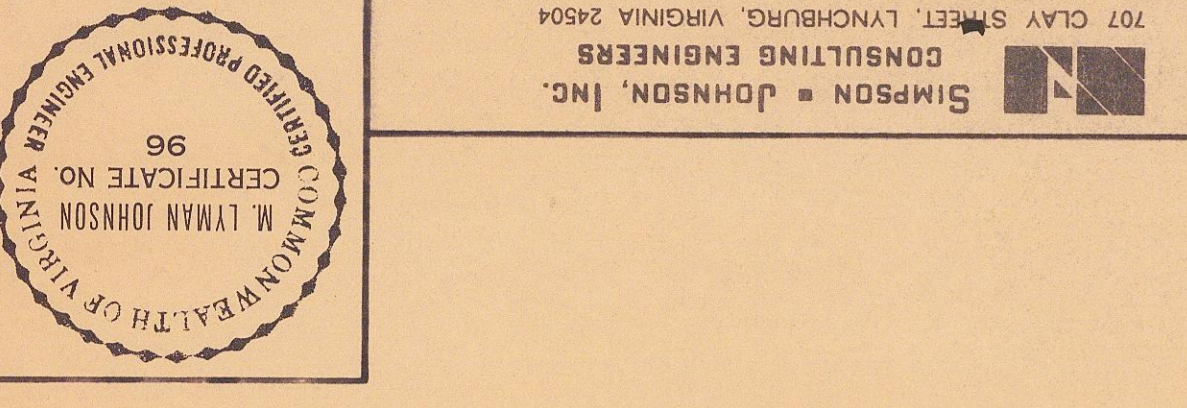
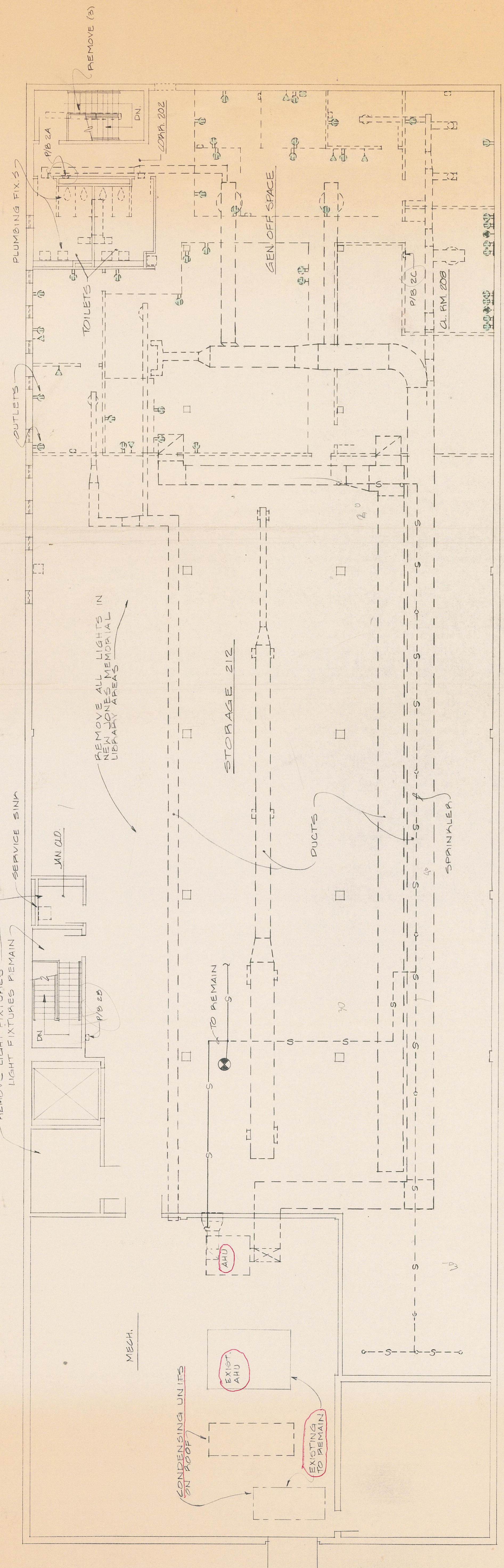


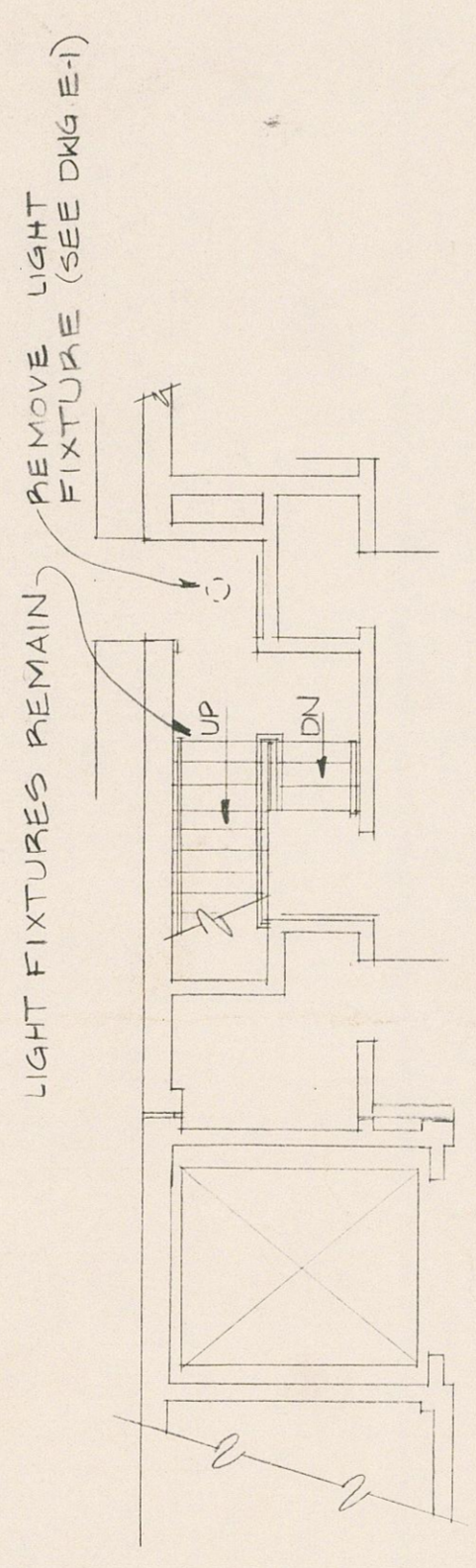
HEATING, PLUMBING & ELECTRICAL DEMOLITION	design	by	EA504P
	drawn	by	TEJ
	checked	by	EAS
	date		3/1/86
	comm		2/27/86
	scale		AS NOTED
	drawing		HPED:1



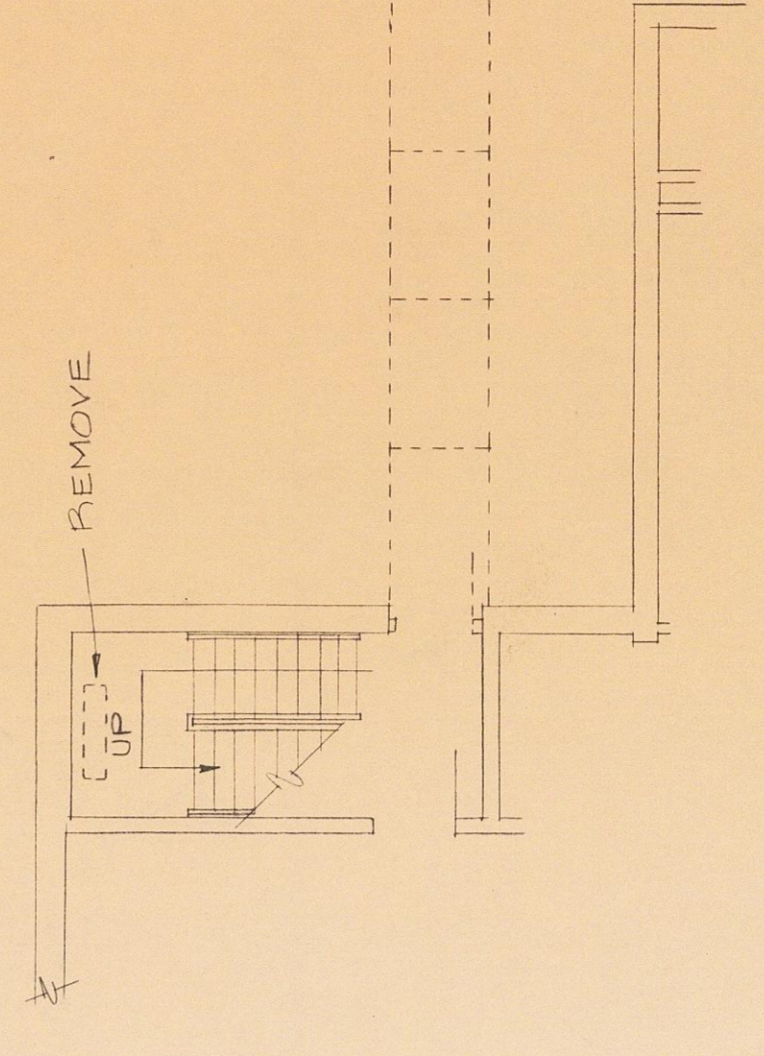
These drawings represent the final construction documents for the project. The contractor is responsible for verifying the accuracy of the drawings and for obtaining all necessary permits. The Architect's liability is limited to the design and construction of the project. The Architect does not assume any responsibility for the contractor's actions or omissions. The Architect's office is located at 707 Clay Street, Lynchburg, Virginia 24504.



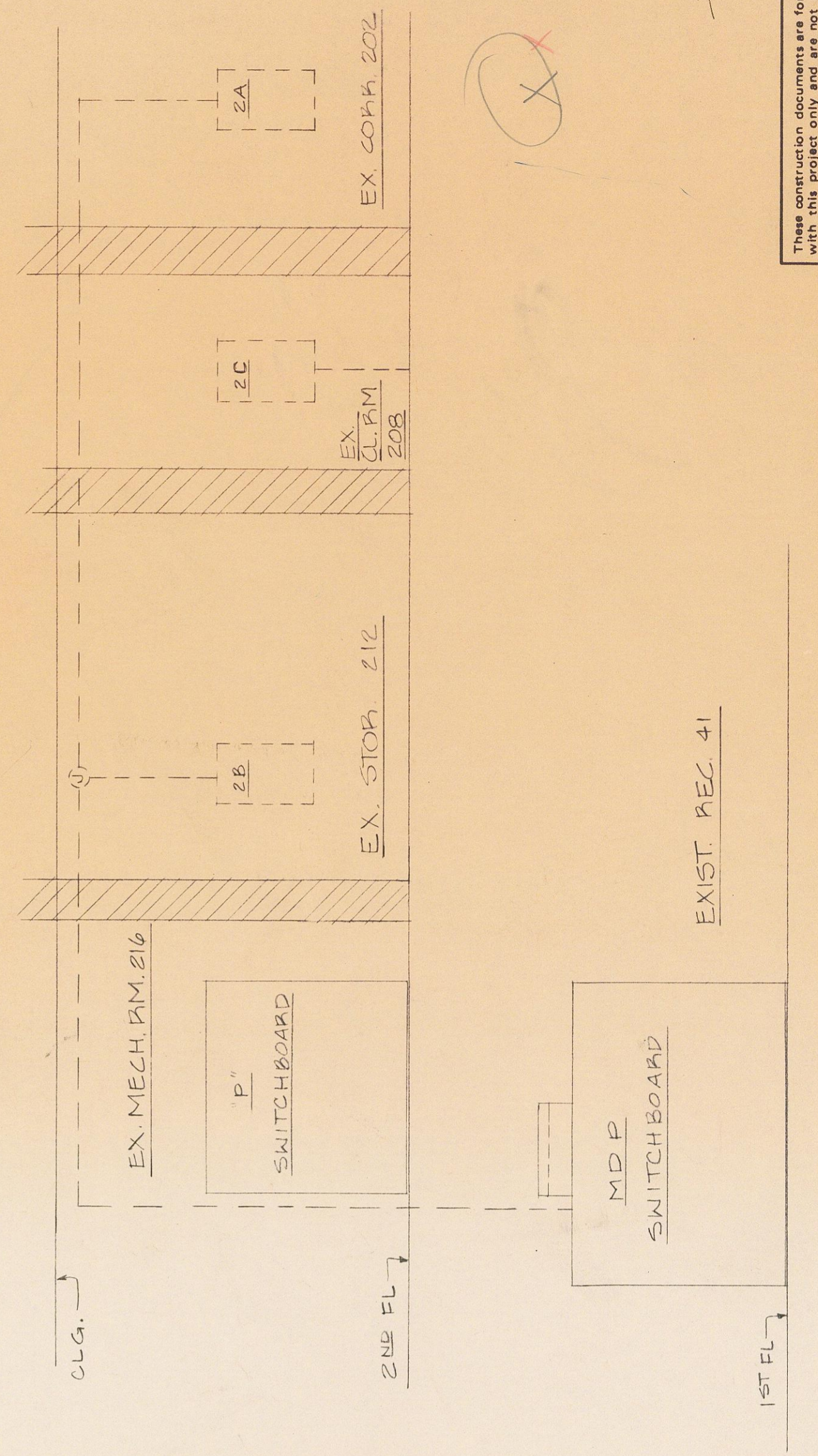
DEMOLITION - SECOND FLOOR PLAN
 SCALE: 1/8" = 1'-0"



DEMOLITION - PART FIRST FLOOR PLAN
 SCALE: 1/8" = 1'-0"



DEMOLITION - PART FIRST FLOOR PLAN
 SCALE: 1/8" = 1'-0"



POWER RISER DIAGRAM - DEMOLITION
 NOT TO SCALE

LEGEND
 - - - - - ITEMS TO BE REMOVED
 _____ ITEMS TO REMAIN