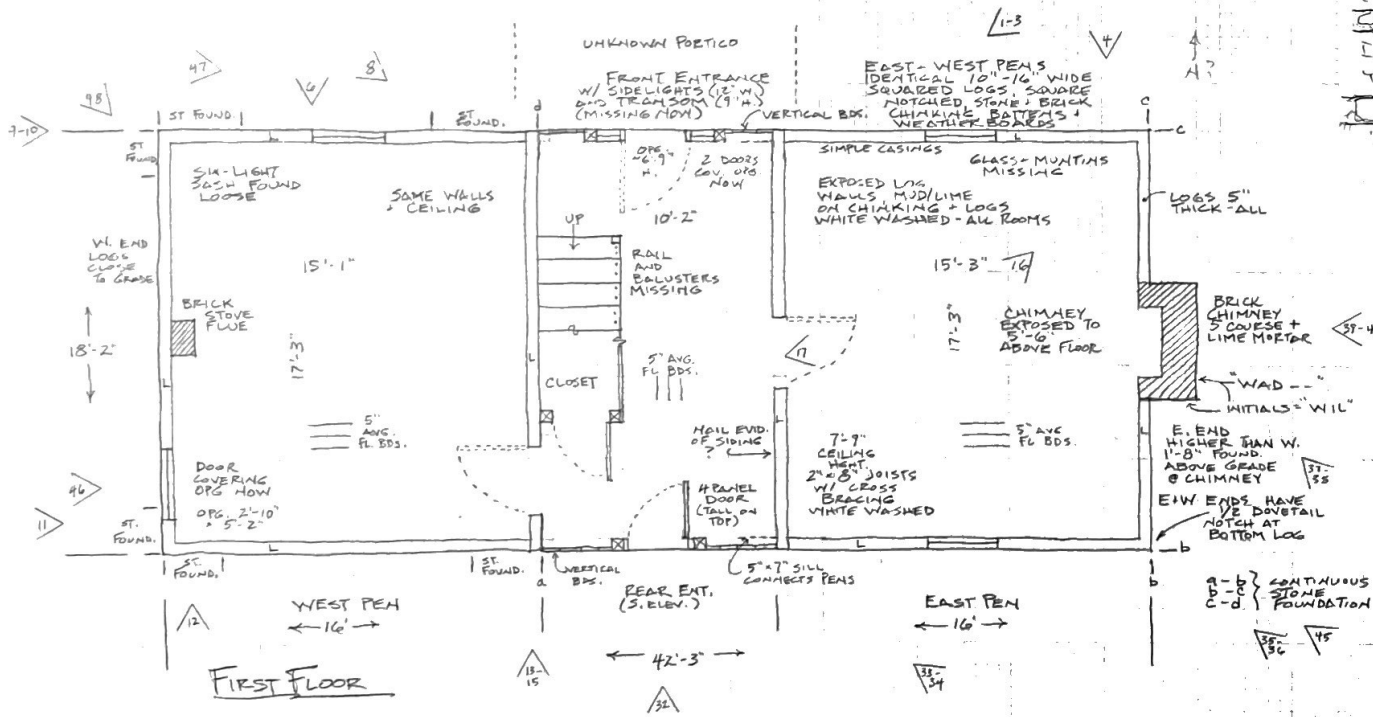
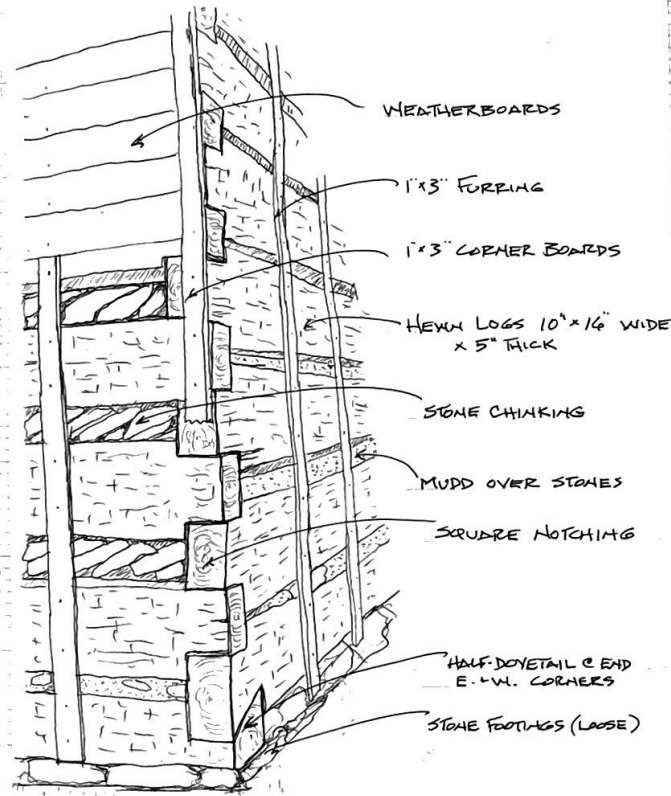


SECOND FLOOR



FIRST FLOOR

FULL 2-STORY LOG HOUSE  
 2 16'x18' SECTIONS JOINED  
 BY CENTER PASSAGE  
 SQUARE NOTCH W/  
 HALF-DOVETAILS ON ENDS  
 CA. 1850 (NAILS + CIR. SAW MARKS)

"SMITH" HOUSE ON DALTON PROPERTY  
 #2687 ROUTE 43 BEDFORD CO.  
 RECORDED BY TRAVIS McDONALD  
 AND KELSEY DOUTSON  
 JULY 2017

