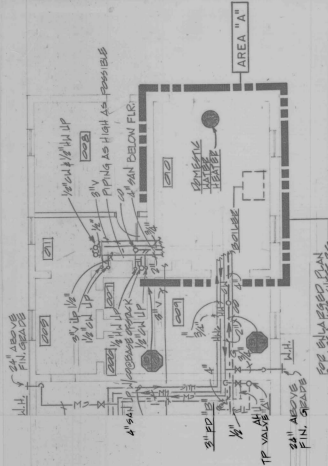


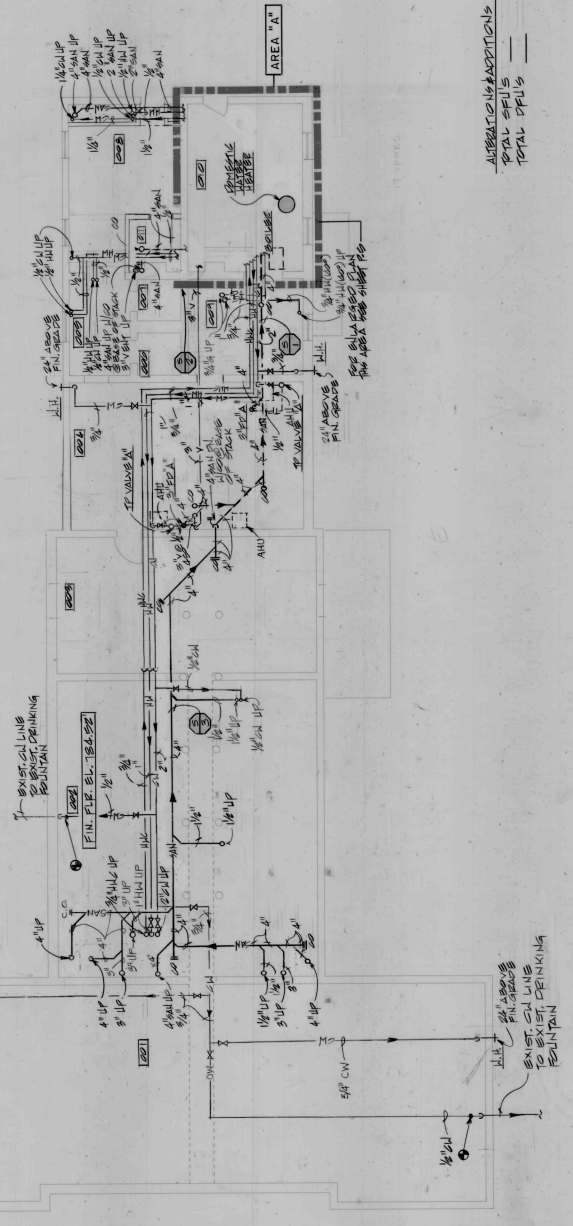


MANOYER ENGINEERS P.C.  
CONSULTING ENGINEERS  
RICHMOND, VIRGINIA

BHEET  
P-2  
NUMBER  
1540  
DATE  
4/24/91



FUTURE PART FLOOR PLAN  
SCALE: 1/8" = 1'-0"



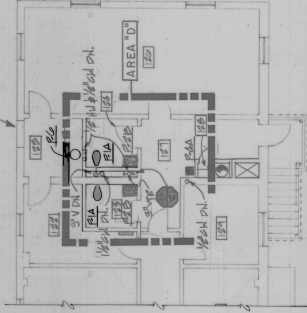
BASEMENT FLOOR PLAN-PLUMBING  
SCALE: 1/8" = 1'-0"

ALTERATIONS/ADDITIONS TO PRESBYTERIAN HOME ADMINISTRATION  
TOTAL SFUS  
TOTAL DFUS



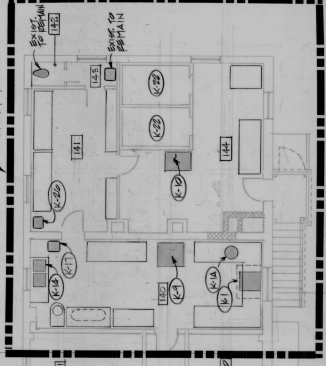
HANOVER ENGINEERS P.C.  
CONSULTING ENGINEERS  
RICHMOND, VIRGINIA

SEE ENLARGED PART PLAN  
FOR PIPING BELOW FLOOR  
SHEET P5

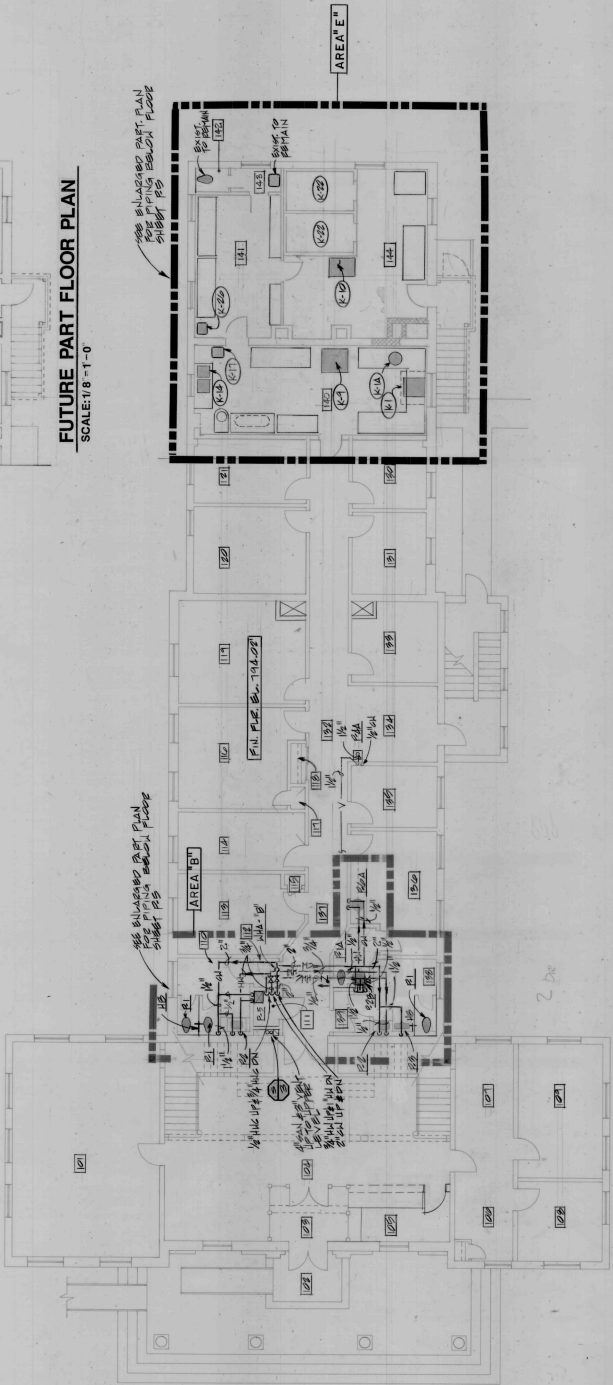
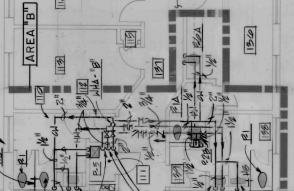


**FUTURE PART FLOOR PLAN**  
SCALE: 1/8" = 1'-0"

SEE ENLARGED PART PLAN  
FOR PIPING BELOW FLOOR  
SHEET P5



SEE ENLARGED PART PLAN  
FOR PIPING BELOW FLOOR  
SHEET P5



**MAIN FLOOR PLAN - PLUMBING**  
SCALE: 1/8" = 1'-0"



ALAN J. LAMBERT  
 CERTIFICATE NO. 4062  
 COMMISSION EXPIRES 12/31/2018  
 HANOVER ENGINEERS, P.C.  
 CONSULTING ENGINEERS  
 RICHMOND, VIRGINIA

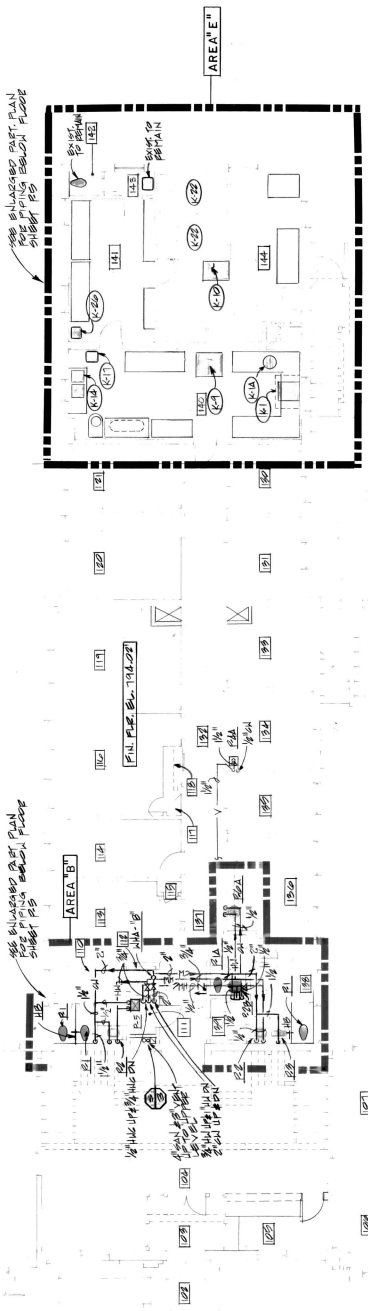
SHEET  
 P-3  
 NUMBER  
 1540  
 DATE  
 4-24-11

PREBYTERIAN HOME ALTERATIONS & ADDITIONS TO  
 ADMINISTRATION BUILDING  
 LYNCHBURG, VIRGINIA

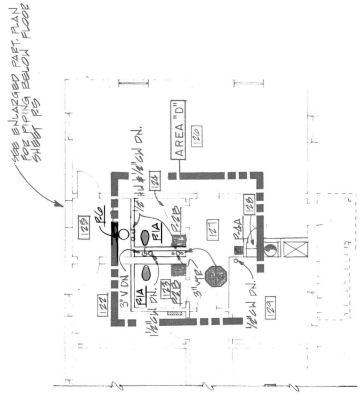
A PROFESSIONAL CORPORATION  
**FAUBER**  
 ARCHITECTS  
 P.O. BOX 362, FOREST, VA 24511 (004) 528-2948

MAIN PLAN - PLUMBING

**MAIN FLOOR PLAN - PLUMBING**  
 SCALE: 1/8" = 1'-0"



**FUTURE PART FLOOR PLAN**  
 SCALE: 1/8" = 1'-0"





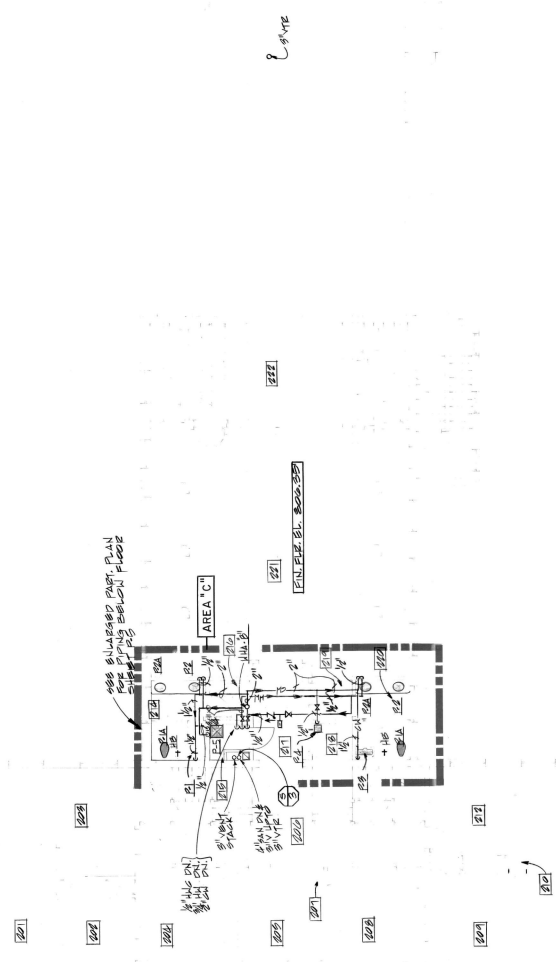
**HAWKER ENGINEERS P.C.**  
RICHMOND, VIRGINIA

PRESBYTERIAN HOME ALTERATIONS & ADDITIONS TO  
ADMINISTRATION BUILDING  
LYNCHBURG VIRGINIA

**FAUBER**  
A PROFESSIONAL CORPORATION  
ARCHITECTS  
P.O. BOX 362, FOREST, VA 24551 (804) 525-2948

UPPER FLOOR PLAN - PLUMBING

UPPER FLOOR PLAN - PLUMBING  
SCALE: 1/8" = 1'-0"



Curve

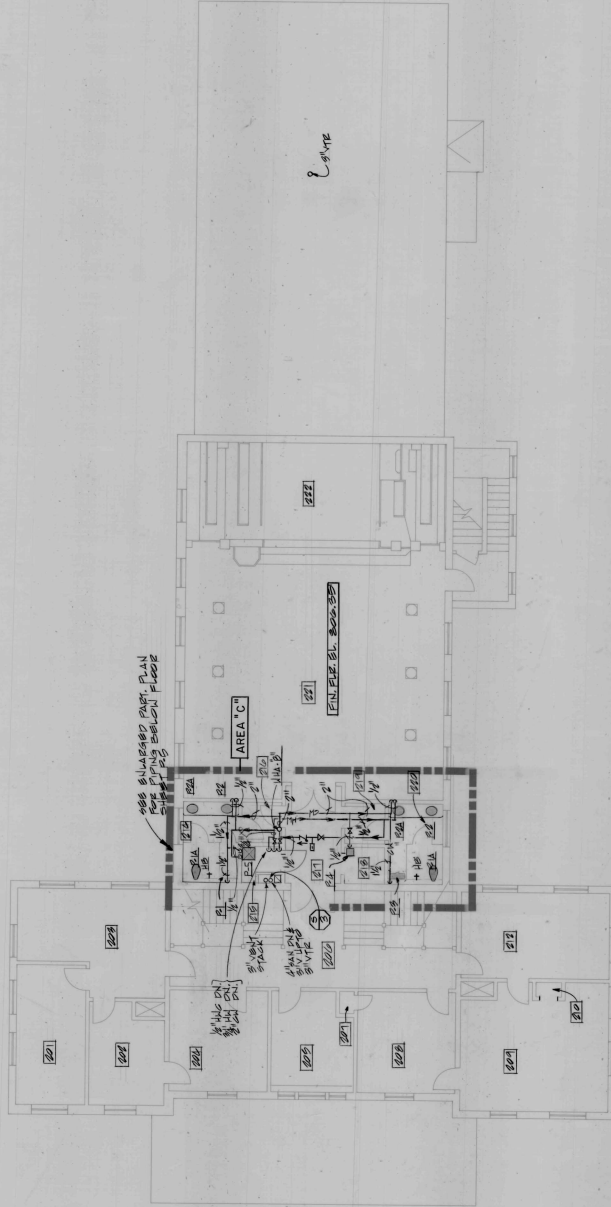


HANOVER ENGINEERS P.C.  
 CONSULTING ENGINEERS  
 RICHMOND, VIRGINIA

ADMINISTRATION BUILDING  
 PRESBYTERIAN HOME ALTERATIONS & ADDITIONS TO  
 LYNCHBURG VIRGINIA

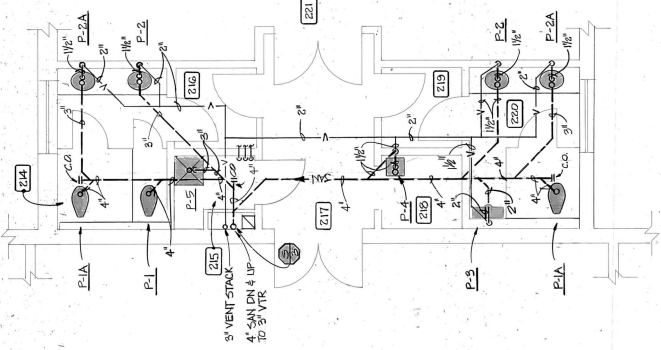
FAUBER  
 A PROFESSIONAL CORPORATION  
 ARCHITECTS  
 P.O. BOX 362, FOREST VA 24551 (804) 526-2949

UPPER PLAN - PLUMBING

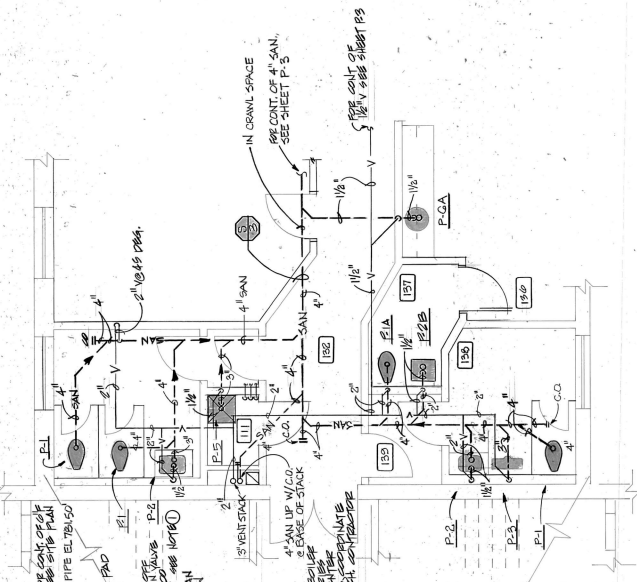


UPPER FLOOR PLAN - PLUMBING  
 SCALE: 1/8" = 1'-0"

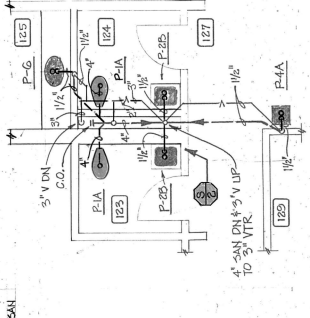




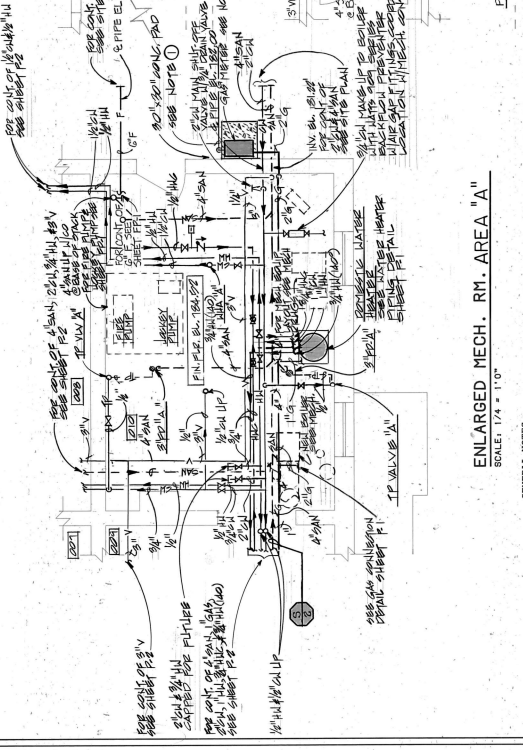
ENLARGED RM. 214-220 AREA "C"  
SCALE: 1/4" = 1'-0"



ENLARGED RM. 110-112, 137-139 AREA "B"  
SCALE: 1/4" = 1'-0"



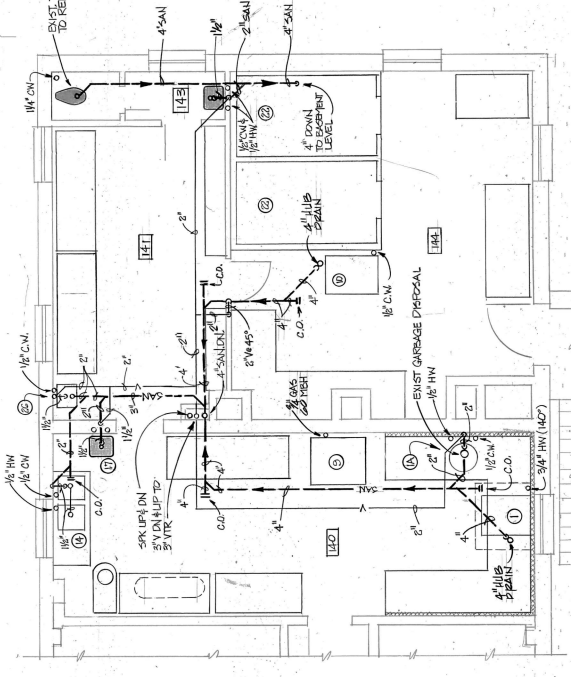
FUTURE ENLARGED RMS. 123, 124 AREA "D"  
SCALE: 1/4" = 1'-0"



ENLARGED MECH. RM. AREA "A"  
SCALE: 1/4" = 1'-0"

**GENERAL NOTES**

- THE GAS PIPING SYSTEM SHALL BE CONNECTED TO A HIGH PRESSURE GAS MAIN AND THE PRESSURE GAS SHALL BE DISTRIBUTED TO THE BUILDING AND PRESSURE GAS SHALL BE DISTRIBUTED TO THE PRESBYTERIAN HOME ADMINISTRATION BUILDING. THE CONTRACTOR SHALL VERIFY THE GAS MAIN PRESSURE AND THE GAS MAIN SIZE OF UNDERGROUND GAS SERVICE FURNISHED BY THE CITY OF RICHMOND, VIRGINIA. THE CONTRACTOR SHALL VERIFY THE GAS MAIN SIZE OF UNDERGROUND GAS SERVICE FURNISHED BY THE CONTRACTOR.



ENLARGED KITCHEN PLAN AREA "E"  
SCALE: 1/4" = 1'-0"

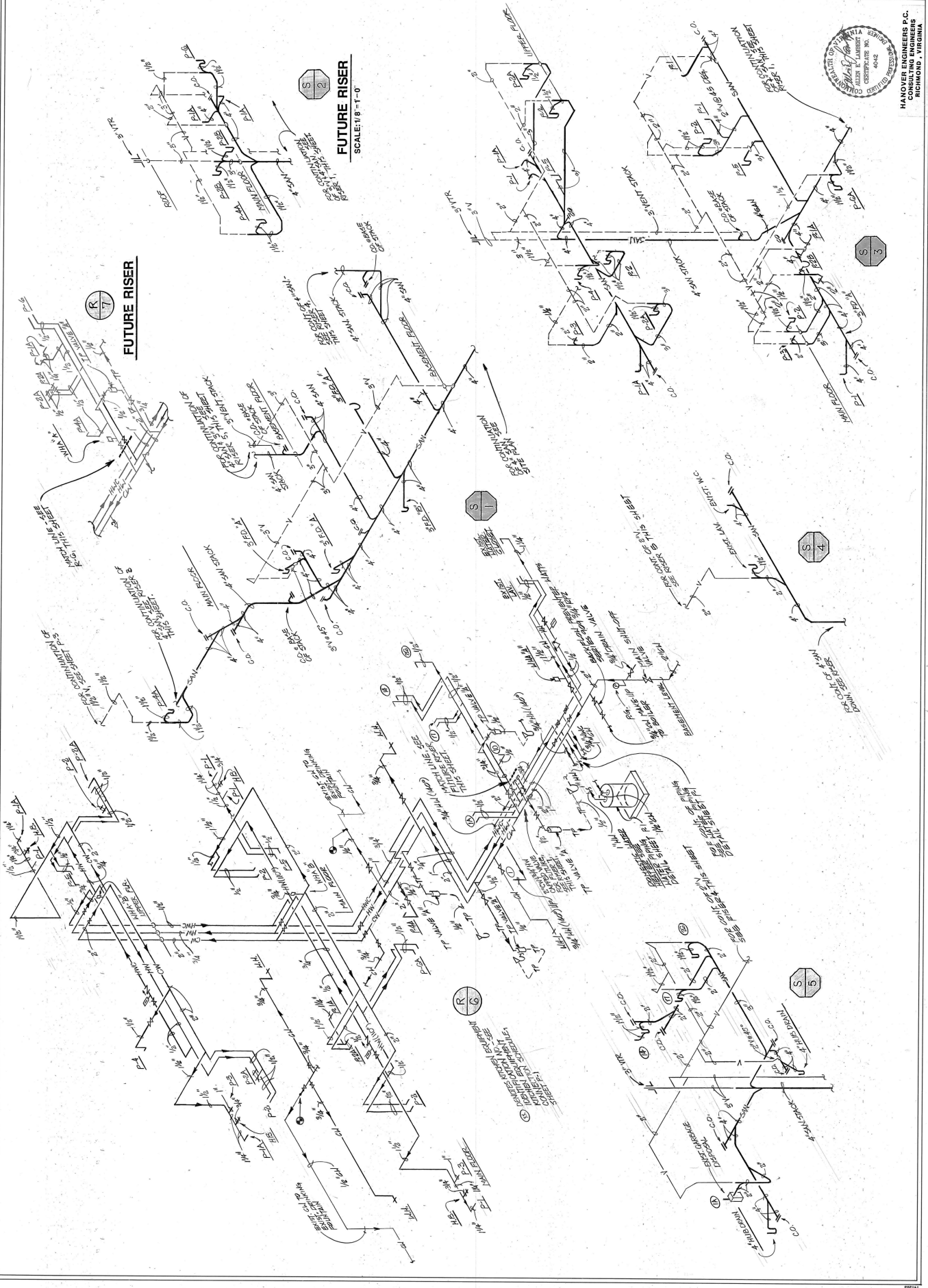


HANCOCK ENGINEERS P.C.  
CONSULTING ENGINEERS  
RICHMOND, VIRGINIA

PRESTYER/HOME ALTERATIONS & ADDITIONS TO  
ADMINISTRATION BUILDING  
LYNCHBURG, VIRGINIA

FAUBER  
A PROFESSIONAL CORPORATION  
ARCHITECTS  
P.O. BOX 362, FOREST, VA 24551 (604) 525-2948

PLUMBING RISERS

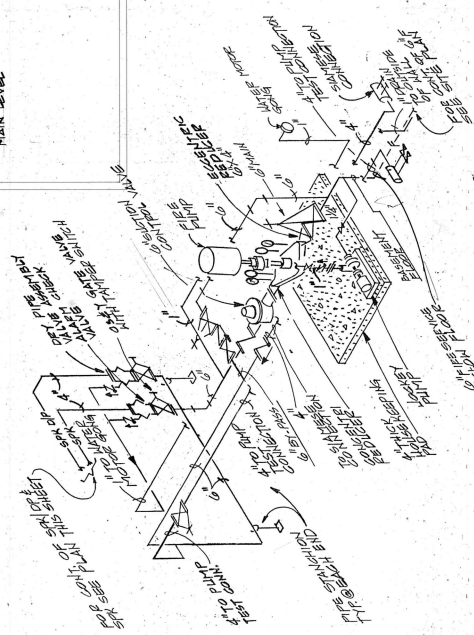


**LEGEND**

- SPK SPRINKLER
- SPK D/P SPRINKLER DRY PIPE
- D DRAINPIPE
- P PIPE UP
- D PIPE DOWN
- S SIDEWALL SPRINKLER HEAD
- U UPRIGHT SPRINKLER HEAD
- P PENDANT SPRINKLER HEAD
- SPK SPRINKLER STANDPIPE
- F.F.D.C.V. FIRE DEPARTMENT CONNECTION VALVE (2-1/2")
- OS & Y OUTSIDE SCREW & YOKER
- NTS NOT TO SCALE
- F.S. TAMPER SWITCH
- F.P.C. FIRE PROTECTION CONTRACTOR
- D.V. DRAIN VALVE
- AFF ABOVE FINISHED FLOOR
- I.N.V. ELEV. INVERT ELEVATION
- ROOM NUMBER
- PENDANT SPRINKLER HEAD FREEZE-PROOF

**FIRE PROTECTION NOTES:**

- FIRE PUMP  
HAWORTH MODEL 433 NET 500 GPM, 55 PSI HEAD, 1800 RPM, 25  
HP, 200V/480V/3P, 50% EFFICIENCY, 24 HOURS.
- HURDIS MODEL 350CTM, 5 GPM, 65 PSI HEAD, HP 1/2, 3450 RPM,  
200V/480V/3P.



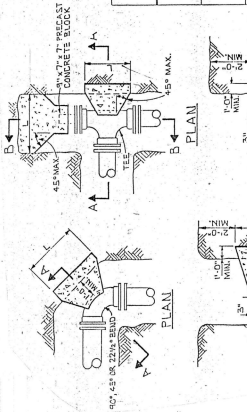
**FIRE RISER DIAGRAM**  
NO SCALE

**TYPICAL CONCRETE THRUST BLOCK DETAILS**  
NO SCALE

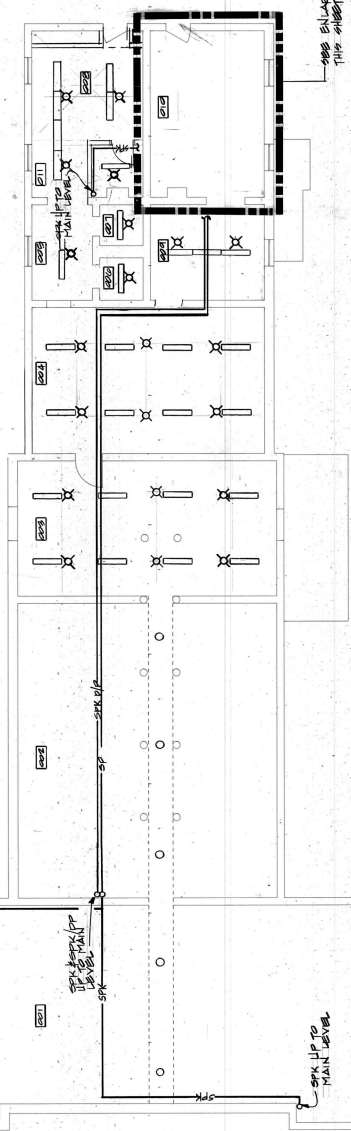
SECTION A-A  
SECTION B-B

PIPE SIZE INCHES	PIPE WEIGHT LBS	SPACERS	FEET
D	S	L	N
4.5	4.5	2.0	1.5
5.0	5.0	2.0	1.5
5.5	5.5	2.0	1.5
6.0	6.0	2.0	1.5
6.5	6.5	2.0	1.5
7.0	7.0	2.0	1.5
7.5	7.5	2.0	1.5
8.0	8.0	2.0	1.5
8.5	8.5	2.0	1.5
9.0	9.0	2.0	1.5
9.5	9.5	2.0	1.5
10.0	10.0	2.0	1.5
10.5	10.5	2.0	1.5
11.0	11.0	2.0	1.5
11.5	11.5	2.0	1.5
12.0	12.0	2.0	1.5

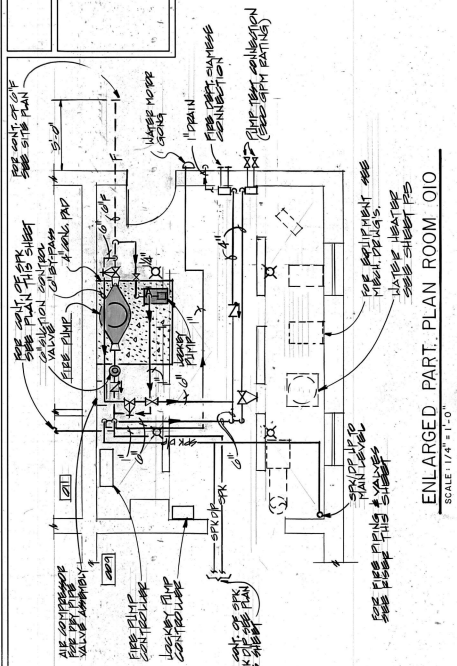
**NOTE:** CONCRETE & REINFORCING BARS SHALL BE AS SHOWN FOR ALL SIZES.



**ENLARGED PART. PLAN ROOM O10**  
SCALE 1/4" = 1'-0"



**ENLARGED PART PLAN**  
THIS SHEET



**BASE. PLAN-FIRE PROTECT.**

**FAUBER**  
A PROFESSIONAL CORPORATION  
ARCHITECTS  
P.O. BOX 352, FOREST, VA 24551 (604) 525-2948

**ADMINISTRATION BUILDING**  
PRESBYTERIAN HOME ALTERATIONS & ADDITIONS TO  
LYNCHBURG VIRGINIA

**HANOVER ENGINEERS P.C.**  
REGISTERED PROFESSIONAL ENGINEERS  
RICHMOND, VIRGINIA

SEAL: STATE OF VIRGINIA  
LICENSE NO. 1000000000  
EXPIRES 12/31/2024

SHEET	FP-1
NUMBER	1540
DATE	4/25/21

**BASEMENT FLOOR PLAN-FIRE PROTECTION**  
SCALE: 1/8" = 1'-0"

**NOTES:**  
1. ALL ENLARGED DETAILS ARE NOT SHOWN.

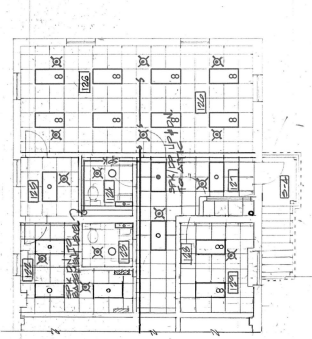


HANOVER ENGINEERS, INC.  
 CONSULTING ENGINEERS  
 RICHMOND, VIRGINIA

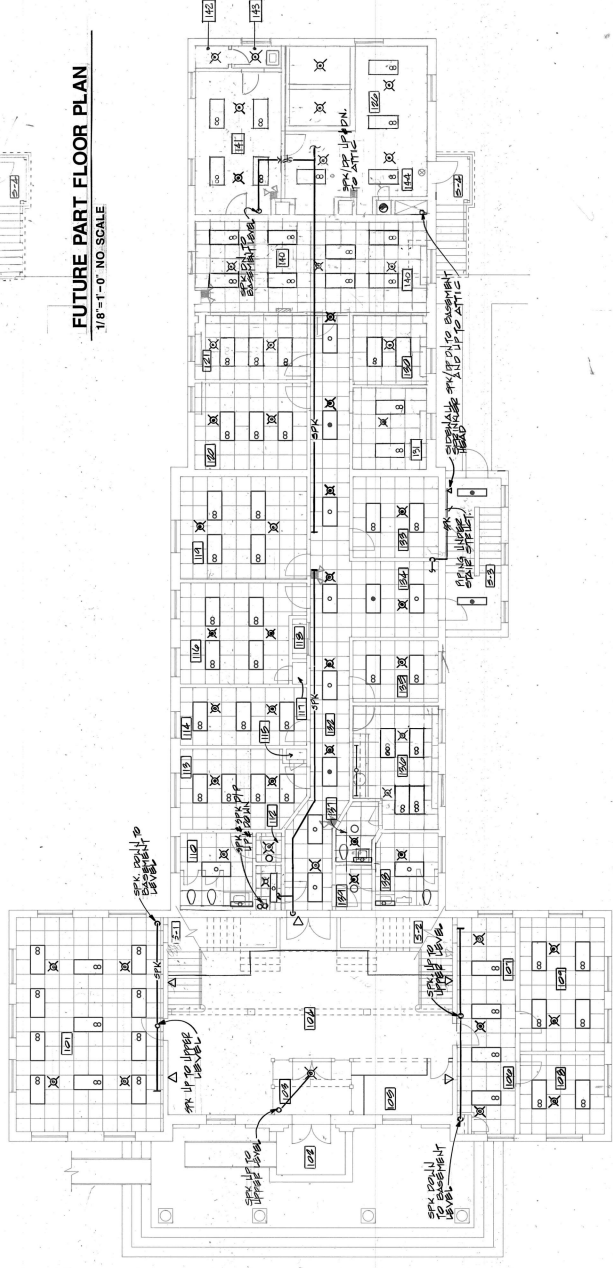
RESBYTERIAN HOME ALTERATIONS & ADDITIONS TO  
 ADMINISTRATION BUILDING  
 LYNCHBURG VIRGINIA

F AUBER  
 A PROFESSIONAL CORPORATION  
 ARCHITECTS  
 P.O. BOX 262, FOREST VA 24501 (804) 925-2948

MAIN PLAN-FIRE PROTECT.



**FUTURE PART FLOOR PLAN**  
 1/8" = 1'-0" NO SCALE



**MAIN FLOOR PLAN - FIRE PROTECTION**  
 SCALE: 1/8" = 1'-0"

NOTES:  
 1. ADJUST SPRINKLER HEAD LAYOUT AS NECESSARY TO COMPLY WITH  
 NFPA-13. ALL REQUIRED HEADS ARE NOT SHOWN.



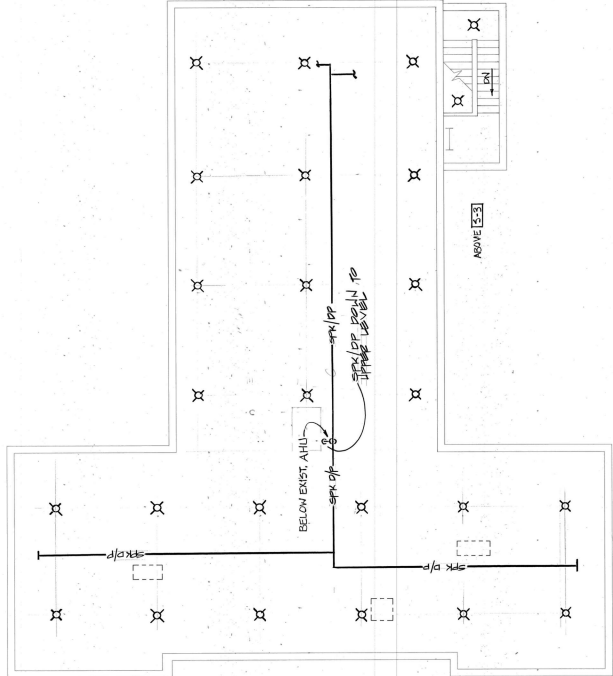


HANOVER ENGINEERS P.C.  
CONSULTING ENGINEERS  
RICHMOND, VIRGINIA

PRESBYTERIAN HOME ALTERATIONS & ADDITIONS TO  
ADMINISTRATION BUILDING  
LYNCHBURG, VIRGINIA

**FAUBER**  
A PROFESSIONAL CORPORATION  
ARCHITECTS  
P.O. BOX 362, FOREST, VA 24551 (804) 525-2946

ATTIC PLAN-FIRE PROTECT.



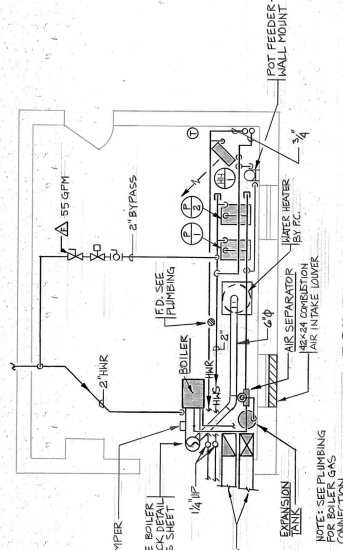
**ATTIC PLAN - FIRE PROTECTION**

SCALE: 1/8" = 1'-0"

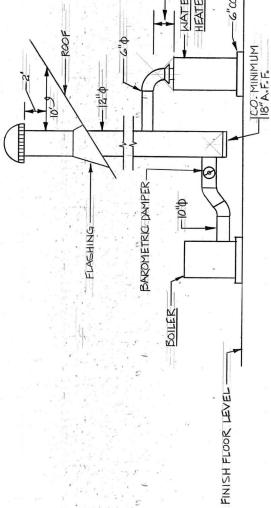
Notes:  
1. ALL FRAMES AND JOISTS TO BE PROTECTED WITH 1/2" MINIMUM Gypsum Board.  
2. ALL FRAMES AND JOISTS TO BE PROTECTED WITH 1/2" MINIMUM Gypsum Board.



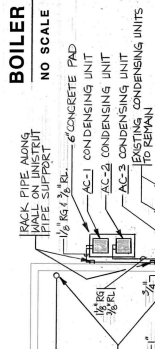
HANOVER ENGINEERS P.C. CONSULTING ENGINEERS FREDERICKS, VIRGINIA



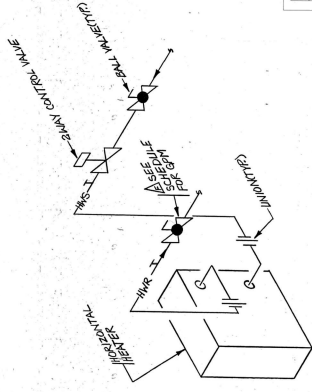
BOILER ROOM #010 - PART PLAN SCALE 1/4" = 1'-0"



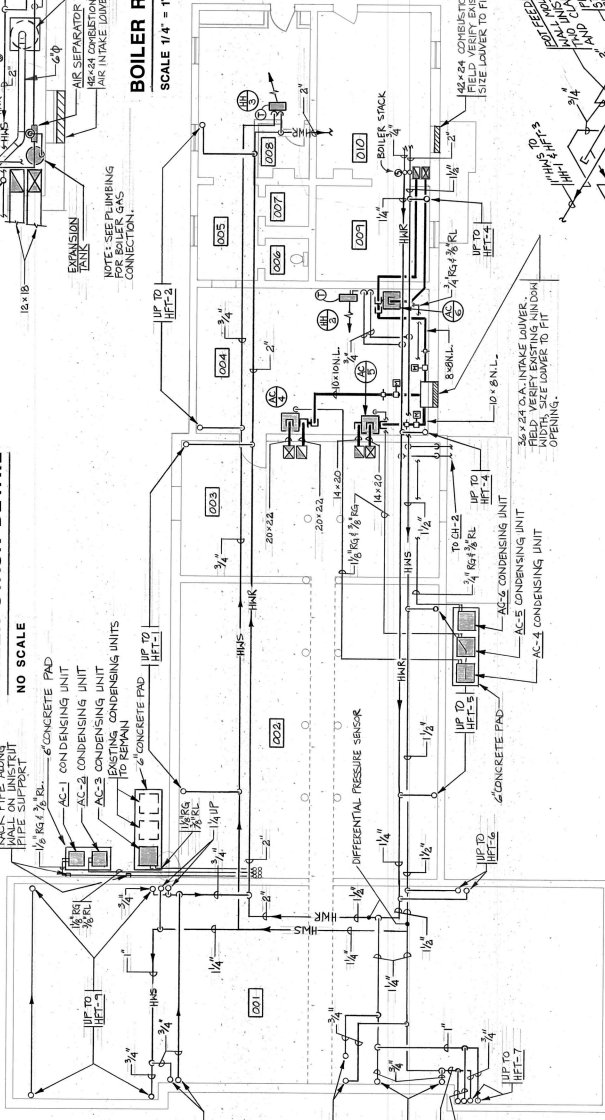
BOILER STACK DETAIL NO SCALE



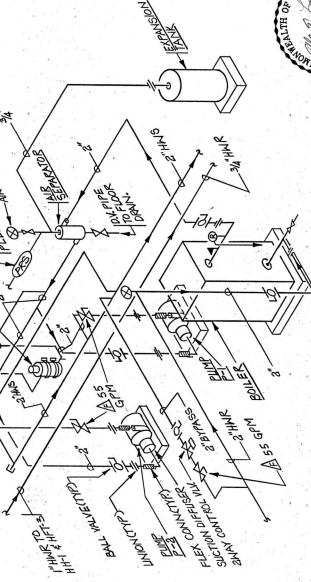
HORIZONTAL UNIT HEATER PIPING DETAIL NO SCALE



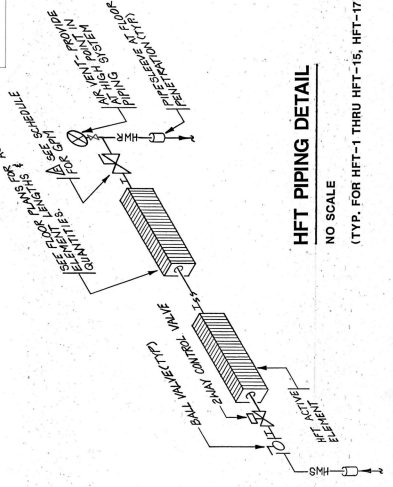
ISOMETRIC OF HH COIL PIPING NO SCALE



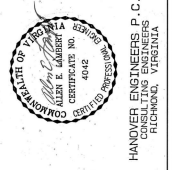
BASEMENT FLOOR PLAN-HVAC SCALE: 1/8" = 1'-0"



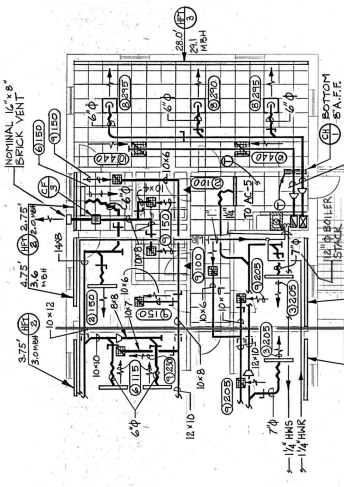
BOILER ROOM PIPING SCHEMATIC NO SCALE



HFT PIPING DETAIL NO SCALE (TYP. FOR HFT-1 THRU HFT-15, HFT-17)

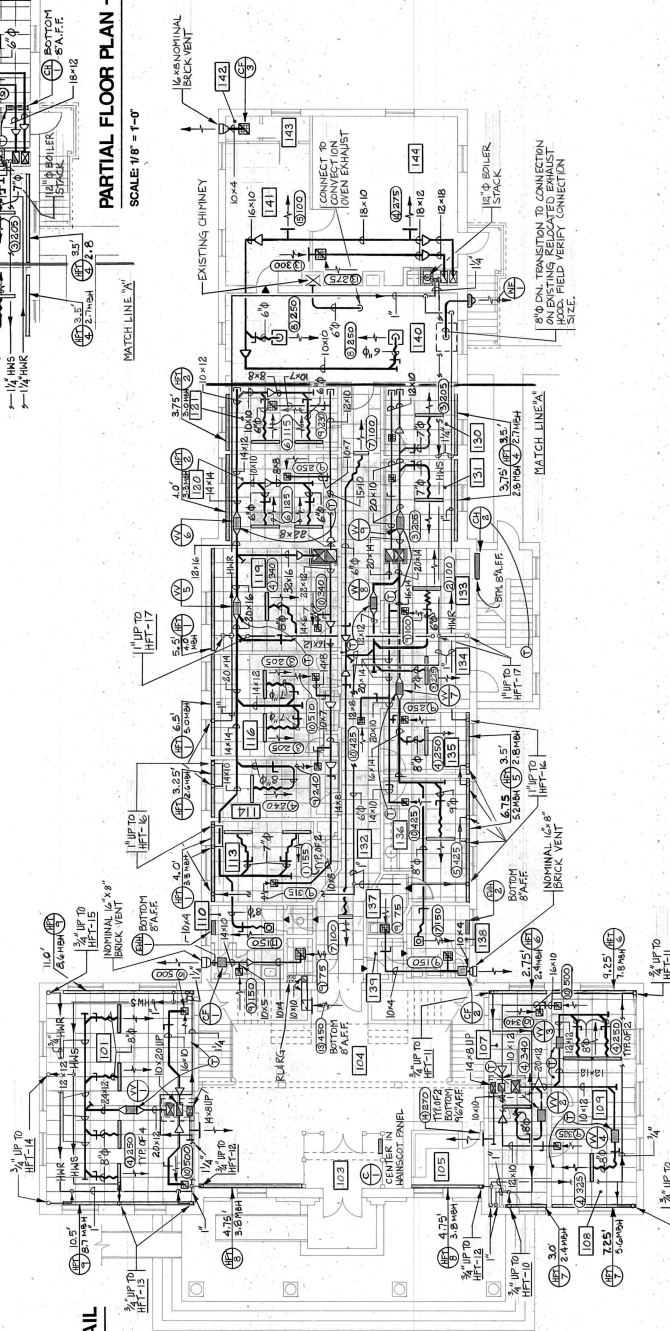


HANDOVER ENGINEERS, P.C. CONSULTING ENGINEERS RICHMOND, VIRGINIA

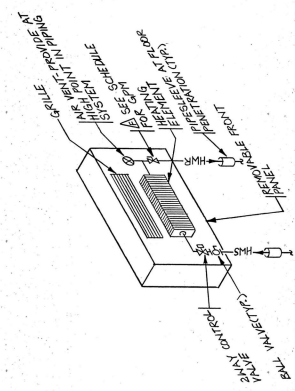


CABINET HEATER PIPING DETAIL NO SCALE

PARTIAL FLOOR PLAN - FUTURE (N.I.C.) SCALE: 1/8" = 1'-0"



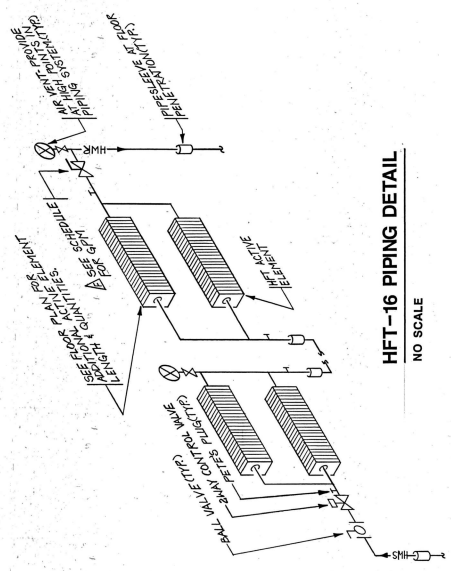
MAIN FLOOR PLAN - HVAC SCALE: 1/8" = 1'-0"



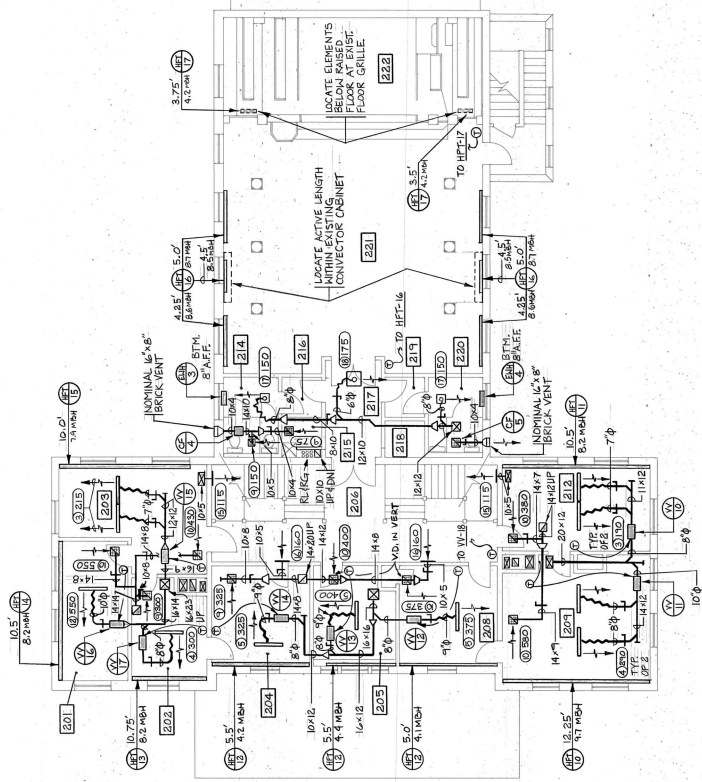
TYP. CONVECTOR PIPING DIAGRAM NO SCALE



HANOVER ENGINEERS P.C.  
CONSULTING ENGINEERS  
FREDERICK, VIRGINIA



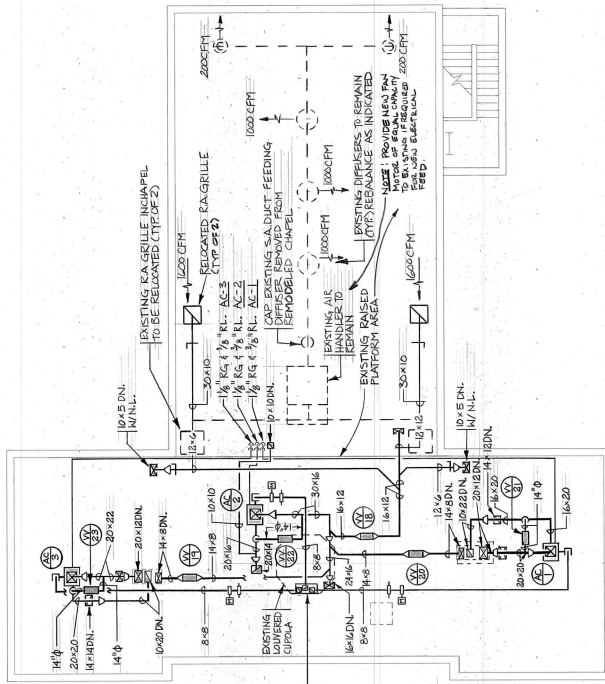
**HFT-16 PIPING DETAIL**  
NO SCALE



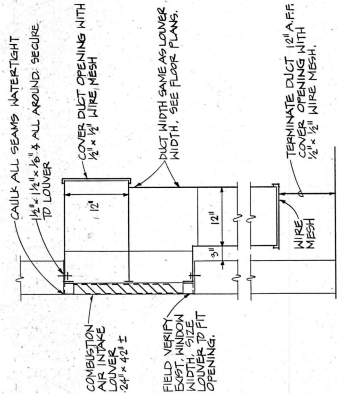
**UPPER FLOOR PLAN - HVAC**  
SCALE: 1/8" = 1'-0"



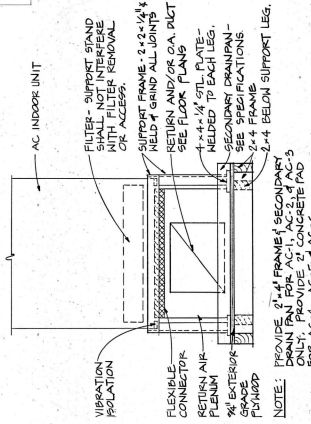
HANDED ENGINEERS, P.C.  
CONSULTING ENGINEERS  
RICHMOND, VIRGINIA



ATTIC PLAN - HVAC  
SCALE: 1/8" = 1'-0"



COMBUSTION AIR INTAKE DETAIL  
NO SCALE



AC INDOOR UNIT SUPPORT DETAIL  
NO SCALE

### SCHEDULE OF VARIABLE VOLUME TERMINALS (VV)

MARK	MODEL	AIR VALVE				VELOCITY		NOTES
		SIZE		MAX	MIN	CFM	FFM	
		CFM	FFM	CFM	FFM	CFM	FFM	
VV-1	CRSSES	14"0	1000	250	935	1		
VV-2	CRSSES	8"0	340	75	974	1		
VV-3	CRSSES	10"0	500	100	974	1		
VV-4	CRSSES	8"0	325	75	991	1		
VV-5	CRSSES	8"0	1545	275	1107	1		
VV-6	CRSSES	12"0	780	100	989	1		
VV-7	CRSSES	12"0	855	100	1050	1		
VV-8	CRSSES	12"0	715	100	1089	1		
VV-9	CRSSES	8"0	380	100	1089	1		
VV-10	CRSSES	10"0	580	100	1074	1		
VV-11	CRSSES	8"0	375	100	1146	1		
VV-12	CRSSES	8"0	400	100	951	1		
VV-13	CRSSES	8"0	365	75	935	1		
VV-14	CRSSES	10"0	450	100	1008	1		
VV-15	CRSSES	10"0	550	125	1008	1		
VV-16	CRSSES	8"0	300	100	860	1		
VV-17	CRSSES	10"0	705	175	888	1		
VV-18	CRSSES	8"0	270	75	1010	1		
VV-19	CRSSES	8"0	270	75	1010	1		
VV-20	CRSSES	14"0	1600	75	1010	1		
VV-21	CRSSES	14"0	1725	---	1614	1		
VV-22	CRSSES	14"0	1725	---	1614	1		
VV-23	CRSSES	14"0	1725	---	1614	1		
VV-24	CRSSES	14"0	1725	---	1614	1		
VV-25	CRSSES	14"0	1550	---	1450	1		

NOTES  
 ① MODEL NO. BASED ON RUSKIN.  
 ② BY PASS DAMPER

### HYDRONIC FIN TUBE RADIATION SCHEDULE

REF. NO.	VULCAN MODEL #	ELEMENT TYPE	ENCLOSURE HEIGHT	ENCL. GRM	WATER TEMP.	NOTES	
						ENT.	LVS.
HFT-1	DT	3/4" C-3 1/4"-40	18"	2.5	180	170	1
HFT-2	DT	3/4" C-3 1/4"-40	18"	2.5	180	170	1
HFT-3	DT	3/4" C-3 1/4"-40	18"	2.0	180	165	1
HFT-4	DT	3/4" C-3 1/4"-40	18"	2.0	180	172	1
HFT-5	DT	3/4" C-3 1/4"-40	18"	2.5	180	172	1
HFT-6	DT	3/4" C-3 1/4"-40	18"	2.0	180	172	1
HFT-7	DT	3/4" C-3 1/4"-40	18"	1.5	180	170	1
HFT-8	DT	3/4" C-3 1/4"-40	18"	4.0	180	174	1
HFT-9	DT	3/4" C-3 1/4"-40	18"	2.5	180	172	1
HFT-10	DT	3/4" C-3 1/4"-40	18"	2.0	180	172	1
HFT-11	DT	3/4" C-3 1/4"-40	18"	1.5	180	168	1
HFT-12	DT	3/4" C-3 1/4"-40	18"	1.5	180	168	1
HFT-13	DT	3/4" C-3 1/4"-40	18"	2.0	180	172	1
HFT-14	DT	3/4" C-3 1/4"-40	18"	2.0	180	172	1
HFT-15	DT	3/4" C-3 1/4"-40	18"	2.0	180	172	1
HFT-16	DR	1" C-4 1/4"-48	24"	8.0	180	163	1
HFT-17	DR	1" C-4 1/4"-48	24"	8.0	180	174	1

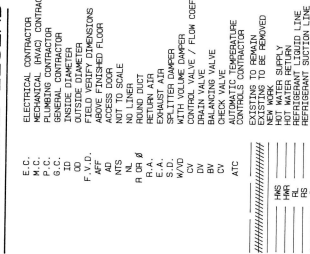
NOTES  
 ① ACTIVE ELEMENT LENGTHS AS INDICATED ON FLOOR PLANS ARE PIPED IN SERIES, CENTER ELEMENTS WITH WINDOW AREAS.  
 ② MOUNT BOTTOM OF ENCLOSURE 4" AFF.  
 ③ FIN TUBE ELEMENTS WITH WINDOW AREAS AS INDICATED ON FLOOR PLANS, CENTER FIN TUBE ELEMENTS WITH WINDOW AREAS & FIN TUBE ELEMENTS BELOW EXISTING RAISED FLOOR PLANS.  
 ④ TWO ROW ELEMENT. PIPE ELEMENTS IN PARALLEL.  
 ⑤ ALL ENCLOSURES TO BE FULL LENGTH OF WALL. SEE FLOOR PLANS.

### SCHEDULE OF GRILLES, REGISTERS & DIFFUSERS

MARK	MODEL NO.	TYPE	SIZE	COLOR	NOTES
1	G21	25-3H	48"7"0	OFF WHITE	1
2	G22	25-2M	48"7"0	OFF WHITE	1
3	G23	48"7"0	48"7"0	OFF WHITE	1
4	G24	48"7"0	48"7"0	OFF WHITE	1
5	G25	48"7"0	48"7"0	OFF WHITE	1
6	G26	48"7"0	48"7"0	OFF WHITE	1
7	G27	48"7"0	48"7"0	OFF WHITE	1
8	G28	48"7"0	48"7"0	OFF WHITE	1
9	R20	RETURN REGISTER	1012	OFF WHITE	2
10	R21	RETURN REGISTER	1416	OFF WHITE	2
11	R22	RETURN REGISTER	2224	OFF WHITE	2
12	R23	RETURN REGISTER	18"X10"	OFF WHITE	2
13	R24	RETURN REGISTER	24"X4"	OFF WHITE	2
14	R25	RETURN REGISTER	10"X8"	OFF WHITE	2
15	R26	RETURN REGISTER	8"X2"	OFF WHITE	2
16	R27	RETURN REGISTER	8"X2"	OFF WHITE	2
17	S20	3M	624	OFF WHITE	3
18	S21	3M	624	OFF WHITE	3

NOTES  
 ① MODEL NO. BASED ON DUNCO AIR PRODUCTS.  
 ② ALL STEEL CONSTRUCTION.  
 ③ PROVIDE INTERNALLY LINED FLEXLINE.  
 ④ DIFFUSER SHALL BE DESIGNED FOR INSTALLATION IN A 2'0" x 2'0" LAT-IN GRID CEILING.  
 ⑤ FINISH TO MATCH SURROUNDING WALLS.

### MECHANICAL LEGEND



ELECTRICAL CONTRACTOR  
 PLUMBING CONTRACTOR  
 GENERAL CONTRACTOR  
 FIELD VERIFY DIMENSIONS  
 ACCESS DOOR  
 AIR VENT  
 PIPE CAP  
 GATE VALVE (G.V.)  
 CHECK VALVE (C.V.)  
 AIR VENT  
 UNION  
 PIPE'S FLUG  
 BALL VALVE  
 CONTROL VALVE (C.V.)  
 FLOW MEASURING STATION  
 SUPPLY DUCT - UP  
 RETURN DUCT - DOWN  
 FLEXIBLE DUCT  
 DIFFUSER  
 DIFFUSER DAMPER (D.D.)  
 TURNING VANES  
 ROOM NUMBER  
 RELIEF VALVE  
 SMOKE DETECTOR  
 DOOR GRILLE (D.G.)  
 BASE PANEL (B.P.)  
 CEILING FAN  
 VARIABLE VOLUME TERMINAL BOX  
 AIR CONDITIONING UNIT  
 HORIZONTAL HEADER  
 CABINET HEATER

1. HORIZONTAL HEADERS (HEBZ & HBL-3).  
 1800' WATER, 1500' WATER, 11,500 BTU/HR, ENTERING WATER - 60°F, LEAVING AIR - 55°F, 1200/60M/1P.  
 2. HORIZONTAL HEADERS (HEBZ & HBL-3).  
 1800' WATER, 1500' WATER, 11,500 BTU/HR, ENTERING WATER - 60°F, LEAVING AIR - 55°F, 1200/60M/1P.  
 3. HORIZONTAL HEADERS (HEBZ & HBL-3).  
 1800' WATER, 1500' WATER, 11,500 BTU/HR, ENTERING WATER - 60°F, LEAVING AIR - 55°F, 1200/60M/1P.  
 4. HORIZONTAL HEADERS (HEBZ & HBL-3).  
 1800' WATER, 1500' WATER, 11,500 BTU/HR, ENTERING WATER - 60°F, LEAVING AIR - 55°F, 1200/60M/1P.  
 5. HORIZONTAL HEADERS (HEBZ & HBL-3).  
 1800' WATER, 1500' WATER, 11,500 BTU/HR, ENTERING WATER - 60°F, LEAVING AIR - 55°F, 1200/60M/1P.  
 6. HORIZONTAL HEADERS (HEBZ & HBL-3).  
 1800' WATER, 1500' WATER, 11,500 BTU/HR, ENTERING WATER - 60°F, LEAVING AIR - 55°F, 1200/60M/1P.  
 7. HORIZONTAL HEADERS (HEBZ & HBL-3).  
 1800' WATER, 1500' WATER, 11,500 BTU/HR, ENTERING WATER - 60°F, LEAVING AIR - 55°F, 1200/60M/1P.  
 8. HORIZONTAL HEADERS (HEBZ & HBL-3).  
 1800' WATER, 1500' WATER, 11,500 BTU/HR, ENTERING WATER - 60°F, LEAVING AIR - 55°F, 1200/60M/1P.  
 9. HORIZONTAL HEADERS (HEBZ & HBL-3).  
 1800' WATER, 1500' WATER, 11,500 BTU/HR, ENTERING WATER - 60°F, LEAVING AIR - 55°F, 1200/60M/1P.  
 10. HORIZONTAL HEADERS (HEBZ & HBL-3).  
 1800' WATER, 1500' WATER, 11,500 BTU/HR, ENTERING WATER - 60°F, LEAVING AIR - 55°F, 1200/60M/1P.  
 11. HORIZONTAL HEADERS (HEBZ & HBL-3).  
 1800' WATER, 1500' WATER, 11,500 BTU/HR, ENTERING WATER - 60°F, LEAVING AIR - 55°F, 1200/60M/1P.  
 12. HORIZONTAL HEADERS (HEBZ & HBL-3).  
 1800' WATER, 1500' WATER, 11,500 BTU/HR, ENTERING WATER - 60°F, LEAVING AIR - 55°F, 1200/60M/1P.  
 13. HORIZONTAL HEADERS (HEBZ & HBL-3).  
 1800' WATER, 1500' WATER, 11,500 BTU/HR, ENTERING WATER - 60°F, LEAVING AIR - 55°F, 1200/60M/1P.  
 14. HORIZONTAL HEADERS (HEBZ & HBL-3).  
 1800' WATER, 1500' WATER, 11,500 BTU/HR, ENTERING WATER - 60°F, LEAVING AIR - 55°F, 1200/60M/1P.  
 15. HORIZONTAL HEADERS (HEBZ & HBL-3).  
 1800' WATER, 1500' WATER, 11,500 BTU/HR, ENTERING WATER - 60°F, LEAVING AIR - 55°F, 1200/60M/1P.  
 16. HORIZONTAL HEADERS (HEBZ & HBL-3).  
 1800' WATER, 1500' WATER, 11,500 BTU/HR, ENTERING WATER - 60°F, LEAVING AIR - 55°F, 1200/60M/1P.  
 17. HORIZONTAL HEADERS (HEBZ & HBL-3).  
 1800' WATER, 1500' WATER, 11,500 BTU/HR, ENTERING WATER - 60°F, LEAVING AIR - 55°F, 1200/60M/1P.  
 18. HORIZONTAL HEADERS (HEBZ & HBL-3).  
 1800' WATER, 1500' WATER, 11,500 BTU/HR, ENTERING WATER - 60°F, LEAVING AIR - 55°F, 1200/60M/1P.  
 19. HORIZONTAL HEADERS (HEBZ & HBL-3).  
 1800' WATER, 1500' WATER, 11,500 BTU/HR, ENTERING WATER - 60°F, LEAVING AIR - 55°F, 1200/60M/1P.  
 20. HORIZONTAL HEADERS (HEBZ & HBL-3).  
 1800' WATER, 1500' WATER, 11,500 BTU/HR, ENTERING WATER - 60°F, LEAVING AIR - 55°F, 1200/60M/1P.  
 21. HORIZONTAL HEADERS (HEBZ & HBL-3).  
 1800' WATER, 1500' WATER, 11,500 BTU/HR, ENTERING WATER - 60°F, LEAVING AIR - 55°F, 1200/60M/1P.  
 22. HORIZONTAL HEADERS (HEBZ & HBL-3).  
 1800' WATER, 1500' WATER, 11,500 BTU/HR, ENTERING WATER - 60°F, LEAVING AIR - 55°F, 1200/60M/1P.  
 23. HORIZONTAL HEADERS (HEBZ & HBL-3).  
 1800' WATER, 1500' WATER, 11,500 BTU/HR, ENTERING WATER - 60°F, LEAVING AIR - 55°F, 1200/60M/1P.  
 24. HORIZONTAL HEADERS (HEBZ & HBL-3).  
 1800' WATER, 1500' WATER, 11,500 BTU/HR, ENTERING WATER - 60°F, LEAVING AIR - 55°F, 1200/60M/1P.  
 25. HORIZONTAL HEADERS (HEBZ & HBL-3).  
 1800' WATER, 1500' WATER, 11,500 BTU/HR, ENTERING WATER - 60°F, LEAVING AIR - 55°F, 1200/60M/1P.  
 26. HORIZONTAL HEADERS (HEBZ & HBL-3).  
 1800' WATER, 1500' WATER, 11,500 BTU/HR, ENTERING WATER - 60°F, LEAVING AIR - 55°F, 1200/60M/1P.  
 27. HORIZONTAL HEADERS (HEBZ & HBL-3).  
 1800' WATER, 1500' WATER, 11,500 BTU/HR, ENTERING WATER - 60°F, LEAVING AIR - 55°F, 1200/60M/1P.  
 28. HORIZONTAL HEADERS (HEBZ & HBL-3).  
 1800' WATER, 1500' WATER, 11,500 BTU/HR, ENTERING WATER - 60°F, LEAVING AIR - 55°F, 1200/60M/1P.  
 29. HORIZONTAL HEADERS (HEBZ & HBL-3).  
 1800' WATER, 1500' WATER, 11,500 BTU/HR, ENTERING WATER - 60°F, LEAVING AIR - 55°F, 1200/60M/1P.  
 30. HORIZONTAL HEADERS (HEBZ & HBL-3).  
 1800' WATER, 1500' WATER, 11,500 BTU/HR, ENTERING WATER - 60°F, LEAVING AIR - 55°F, 1200/60M/1P.  
 31. HORIZONTAL HEADERS (HEBZ & HBL-3).  
 1800' WATER, 1500' WATER, 11,500 BTU/HR, ENTERING WATER - 60°F, LEAVING AIR - 55°F, 1200/60M/1P.  
 32. HORIZONTAL HEADERS (HEBZ & HBL-3).  
 1800' WATER, 1500' WATER, 11,500 BTU/HR, ENTERING WATER - 60°F, LEAVING AIR - 55°F, 1200/60M/1P.  
 33. HORIZONTAL HEADERS (HEBZ & HBL-3).  
 1800' WATER, 1500' WATER, 11,500 BTU/HR, ENTERING WATER - 60°F, LEAVING AIR - 55°F, 1200/60M/1P.  
 34. HORIZONTAL HEADERS (HEBZ & HBL-3).  
 1800' WATER, 1500' WATER, 11,500 BTU/HR, ENTERING WATER - 60°F, LEAVING AIR - 55°F, 1200/60M/1P.  
 35. HORIZONTAL HEADERS (HEBZ & HBL-3).  
 1800' WATER, 1500' WATER, 11,500 BTU/HR, ENTERING WATER - 60°F, LEAVING AIR - 55°F, 1200/60M/1P.  
 36. HORIZONTAL HEADERS (HEBZ & HBL-3).  
 1800' WATER, 1500' WATER, 11,500 BTU/HR, ENTERING WATER - 60°F, LEAVING AIR - 55°F, 1200/60M/1P.  
 37. HORIZONTAL HEADERS (HEBZ & HBL-3).  
 1800' WATER, 1500' WATER, 11,500 BTU/HR, ENTERING WATER - 60°F, LEAVING AIR - 55°F, 1200/60M/1P.  
 38. HORIZONTAL HEADERS (HEBZ & HBL-3).  
 1800' WATER, 1500' WATER, 11,500 BTU/HR, ENTERING WATER - 60°F, LEAVING AIR - 55°F, 1200/60M/1P.  
 39. HORIZONTAL HEADERS (HEBZ & HBL-3).  
 1800' WATER, 1500' WATER, 11,500 BTU/HR, ENTERING WATER - 60°F, LEAVING AIR - 55°F, 1200/60M/1P.  
 40. HORIZONTAL HEADERS (HEBZ & HBL-3).  
 1800' WATER, 1500' WATER, 11,500 BTU/HR, ENTERING WATER - 60°F, LEAVING AIR - 55°F, 1200/60M/1P.  
 41. HORIZONTAL HEADERS (HEBZ & HBL-3).  
 1800' WATER, 1500' WATER, 11,500 BTU/HR, ENTERING WATER - 60°F, LEAVING AIR - 55°F, 1200/60M/1P.  
 42. HORIZONTAL HEADERS (HEBZ & HBL-3).  
 1800' WATER, 1500' WATER, 11,500 BTU/HR, ENTERING WATER - 60°F, LEAVING AIR - 55°F, 1200/60M/1P.  
 43. HORIZONTAL HEADERS (HEBZ & HBL-3).  
 1800' WATER, 1500' WATER, 11,500 BTU/HR, ENTERING WATER - 60°F, LEAVING AIR - 55°F, 1200/60M/1P.  
 44. HORIZONTAL HEADERS (HEBZ & HBL-3).  
 1800' WATER, 1500' WATER, 11,500 BTU/HR, ENTERING WATER - 60°F, LEAVING AIR - 55°F, 1200/60M/1P.  
 45. HORIZONTAL HEADERS (HEBZ & HBL-3).  
 1800' WATER, 1500' WATER, 11,500 BTU/HR, ENTERING WATER - 60°F, LEAVING AIR - 55°F, 1200/60M/1P.  
 46. HORIZONTAL HEADERS (HEBZ & HBL-3).  
 1800' WATER, 1500' WATER, 11,500 BTU/HR, ENTERING WATER - 60°F, LEAVING AIR - 55°F, 1200/60M/1P.  
 47. HORIZONTAL HEADERS (HEBZ & HBL-3).  
 1800' WATER, 1500' WATER, 11,500 BTU/HR, ENTERING WATER - 60°F, LEAVING AIR - 55°F, 1200/60M/1P.  
 48. HORIZONTAL HEADERS (HEBZ & HBL-3).  
 1800' WATER, 1500' WATER, 11,500 BTU/HR, ENTERING WATER - 60°F, LEAVING AIR - 55°F, 1200/60M/1P.  
 49. HORIZONTAL HEADERS (HEBZ & HBL-3).  
 1800' WATER, 1500' WATER, 11,500 BTU/HR, ENTERING WATER - 60°F, LEAVING AIR - 55°F, 1200/60M/1P.  
 50. HORIZONTAL HEADERS (HEBZ & HBL-3).  
 1800' WATER, 1500' WATER, 11,500 BTU/HR, ENTERING WATER - 60°F, LEAVING AIR - 55°F, 1200/60M/1P.  
 51. HORIZONTAL HEADERS (HEBZ & HBL-3).  
 1800' WATER, 1500' WATER, 11,500 BTU/HR, ENTERING WATER - 60°F, LEAVING AIR - 55°F, 1200/60M/1P.  
 52. HORIZONTAL HEADERS (HEBZ & HBL-3).  
 1800' WATER, 1500' WATER, 11,500 BTU/HR, ENTERING WATER - 60°F, LEAVING AIR - 55°F, 1200/60M/1P.  
 53. HORIZONTAL HEADERS (HEBZ & HBL-3).  
 1800' WATER, 1500' WATER, 11,500 BTU/HR, ENTERING WATER - 60°F, LEAVING AIR - 55°F, 1200/60M/1P.  
 54. HORIZONTAL HEADERS (HEBZ & HBL-3).  
 1800' WATER, 1500' WATER, 11,500 BTU/HR, ENTERING WATER - 60°F, LEAVING AIR - 55°F, 1200/60M/1P.  
 55. HORIZONTAL HEADERS (HEBZ & HBL-3).  
 1800' WATER, 1500' WATER, 11,500 BTU/HR, ENTERING WATER - 60°F, LEAVING AIR - 55°F, 1200/60M/1P.  
 56. HORIZONTAL HEADERS (HEBZ & HBL-3).  
 1800' WATER, 1500' WATER, 11,500 BTU/HR, ENTERING WATER - 60°F, LEAVING AIR - 55°F, 1200/60M/1P.  
 57. HORIZONTAL HEADERS (HEBZ & HBL-3).  
 1800' WATER, 1500' WATER, 11,500 BTU/HR, ENTERING WATER - 60°F, LEAVING AIR - 55°F, 1200/60M/1P.  
 58. HORIZONTAL HEADERS (HEBZ & HBL-3).  
 1800' WATER, 1500' WATER, 11,500 BTU/HR, ENTERING WATER - 60°F, LEAVING AIR - 55°F, 1200/60M/1P.  
 59. HORIZONTAL HEADERS (HEBZ & HBL-3).  
 1800' WATER, 1500' WATER, 11,500 BTU/HR, ENTERING WATER - 60°F, LEAVING AIR - 55°F, 1200/60M/1P.  
 60. HORIZONTAL HEADERS (HEBZ & HBL-3).  
 1800' WATER, 1500' WATER, 11,500 BTU/HR, ENTERING WATER - 60°F, LEAVING AIR - 55°F, 1200/60M/1P.  
 61. HORIZONTAL HEADERS (HEBZ & HBL-3).  
 1800' WATER, 1500' WATER, 11,500 BTU/HR, ENTERING WATER - 60°F, LEAVING AIR - 55°F, 1200/60M/1P.  
 62. HORIZONTAL HEADERS (HEBZ & HBL-3).  
 1800' WATER, 1500' WATER, 11,500 BTU/HR, ENTERING WATER - 60°F, LEAVING AIR - 55°F, 1200/60M/1P.  
 63. HORIZONTAL HEADERS (HEBZ & HBL-3).  
 1800' WATER, 1500' WATER, 11,500 BTU/HR, ENTERING WATER - 60°F, LEAVING AIR - 55°F, 1200/60M/1P.  
 64. HORIZONTAL HEADERS (HEBZ & HBL-3).  
 1800' WATER, 1500' WATER, 11,500 BTU/HR, ENTERING WATER - 60°F, LEAVING AIR - 55°F, 1200/60M/1P.  
 65. HORIZONTAL HEADERS (HEBZ & HBL-3).  
 1800' WATER, 1500' WATER, 11,500 BTU/HR, ENTERING WATER - 60°F, LEAVING AIR - 55°F, 1200/60M/1P.  
 66. HORIZONTAL HEADERS (HEBZ & HBL-3).  
 1800' WATER, 1500' WATER, 11,500 BTU/HR, ENTERING WATER - 60°F, LEAVING AIR - 55°F, 1200/60M/1P.  
 67. HORIZONTAL HEADERS (HEBZ & HBL-3).  
 1800' WATER, 1500' WATER, 11,500 BTU/HR, ENTERING WATER - 60°F, LEAVING AIR - 55°F, 1200/60M/1P.  
 68. HORIZONTAL HEADERS (HEBZ & HBL-3).  
 1800' WATER, 1500' WATER, 11,500 BTU/HR, ENTERING WATER - 60°F, LEAVING AIR - 55°F, 1200/60M/1P.  
 69. HORIZONTAL HEADERS (HEBZ & HBL-3).  
 1800' WATER, 1500' WATER, 11,500 BTU/HR, ENTERING WATER - 60°F, LEAVING AIR - 55°F, 1200/60M/1P.  
 70. HORIZONTAL HEADERS (HEBZ & HBL-3).  
 1800' WATER, 1500' WATER, 11,500 BTU/HR, ENTERING WATER - 60°F, LEAVING AIR - 55°F, 1200/60M/1P.  
 71. HORIZONTAL HEADERS (HEBZ & HBL-3).  
 1800' WATER, 1500' WATER, 11,500 BTU/HR, ENTERING WATER - 60°F, LEAVING AIR - 55°F, 1200/60M/1P.  
 72. HORIZONTAL HEADERS (HEBZ & HBL-3).  
 1800' WATER, 1500' WATER, 11,500 BTU/HR, ENTERING WATER - 60°F, LEAVING AIR - 55°F, 1200/60M/1P.  
 73. HORIZONTAL HEADERS (HEBZ & HBL-3).  
 1800' WATER, 1500' WATER, 11,500 BTU/HR, ENTERING WATER - 60°F, LEAVING AIR - 55°F, 1200/60M/1P.  
 74. HORIZONTAL HEADERS (HEBZ & HBL-3).  
 1800' WATER, 1500'



# LOW PRESSURE DUCTWORK DETAILS

SINGLE LINE DUCTWORK	DOUBLE LINE DUCTWORK	DOUBLE LINE DUCTWORK	SINGLE LINE DUCTWORK	DESCRIPTION	DOUBLE LINE DUCTWORK	SINGLE LINE DUCTWORK	DESCRIPTION	DOUBLE LINE DUCTWORK
		RECTANGULAR DUCT 30° ELBOW WITH TURNING VANES (RECDB)		RECTANGULAR DUCT WITH ADJUSTIBLE SLIT-DAMPERS AND TURNING VANES			RECTANGULAR DUCT WITH ADJUSTIBLE SLIT-DAMPERS AND TURNING VANES	
		ROUND DUCT 90° RADIUS ELBOW (RDB)		RECTANGULAR DUCT TRANS-FORMATION TRANSITION (RECTDT)			RECTANGULAR DUCT TRANS-FORMATION TRANSITION (RECTDT)	
		RECTANGULAR DUCT EXPANSION TRANSITION (RECTET)		RECTANGULAR DUCT CONTRAC-TION TRANSITION (RECTCT)			RECTANGULAR DUCT CONTRAC-TION TRANSITION (RECTCT)	
		RECTANGULAR DUCT BRANCH TAKE-OFF FOR RETURN OR EXHAUST ONLY (RECDB)		MOTORIZED DAMPER (MD)			MOTORIZED DAMPER (MD)	
		VOLUME DAMPER (VD)		RECTANGULAR DUCT ECCENTRIC TAKE-OFF FOR RETURN OR EXHAUST ONLY (RECDB)			RECTANGULAR DUCT ECCENTRIC TAKE-OFF FOR RETURN OR EXHAUST ONLY (RECDB)	
		RECTANGULAR TO ROUND DUCT TRANSITION (RTRD)		RECTANGULAR DUCT WITH ADJUSTIBLE SLIT-DAMPERS AND TURNING VANES			RECTANGULAR DUCT WITH ADJUSTIBLE SLIT-DAMPERS AND TURNING VANES	
		RECTANGULAR DUCT CONVERGING TEE FOR RETURN OR EXHAUST ONLY (RECDB)		RECTANGULAR DUCT WITH ADJUSTIBLE SLIT-DAMPERS AND TURNING VANES			RECTANGULAR DUCT WITH ADJUSTIBLE SLIT-DAMPERS AND TURNING VANES	



HANOVER ENGINEERS, P. C.  
 10000 WOODBURN ROAD  
 RICHMOND, VIRGINIA

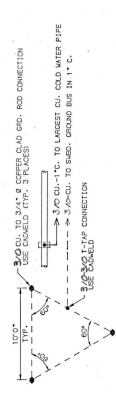
NUMBER: 4-22-91  
 DATE: M-7

PRESBYTERIAN HOME ALTERATIONS & ADDITIONS TO ADMINISTRATION BUILDING  
 VIRGINIA

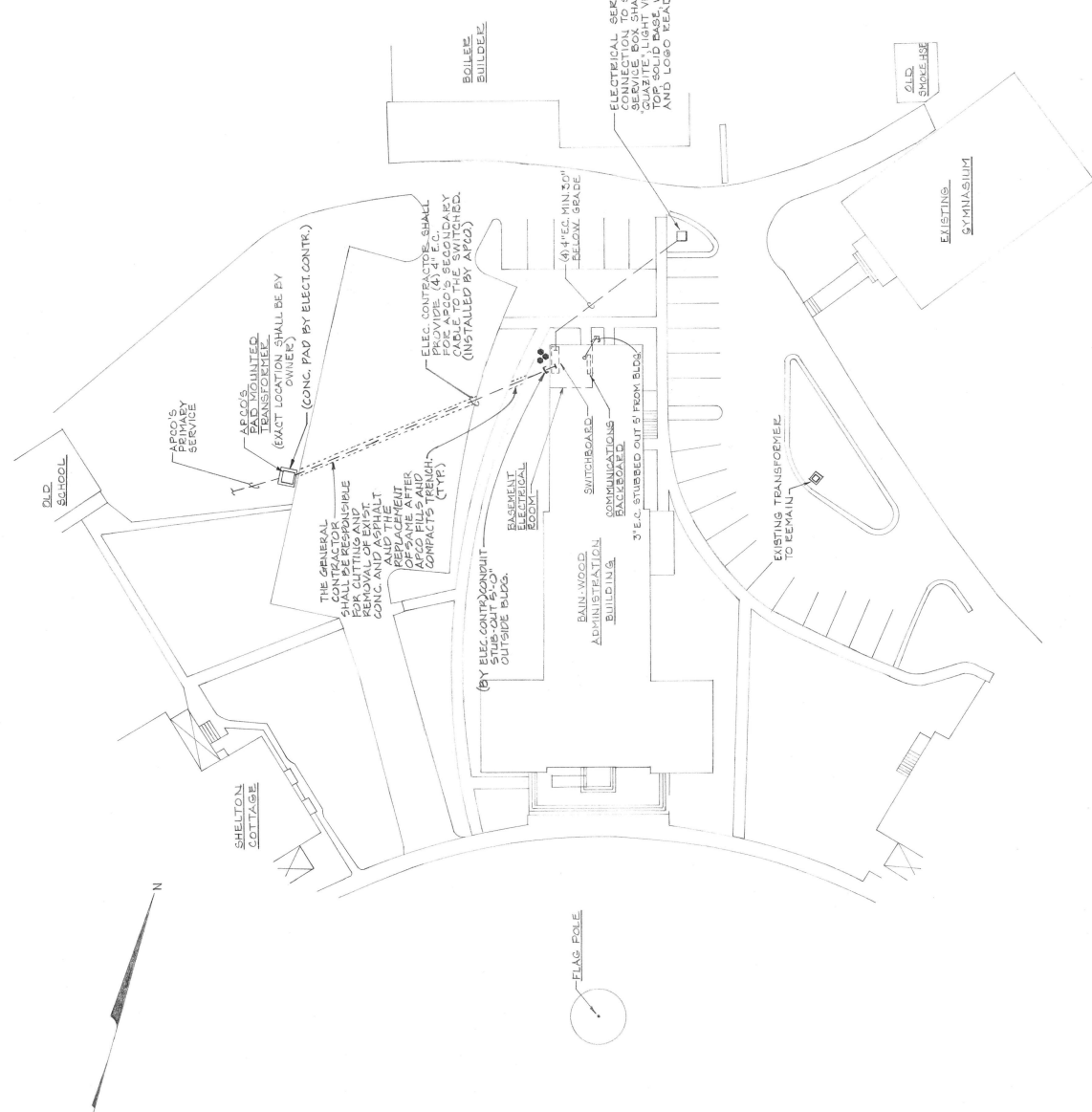
FAUBER ARCHITECTS  
 A PROFESSIONAL CORPORATION  
 P.O. BOX 362, FOREST VA 24551 (804) 525-2948

DETAILS

- GENERAL NOTES**
- ALL THE SYMBOLS SHOWN MAY NOT HAVE BEEN USED ON THE PLANS. SYMBOLS NOT LISTED BELOW ARE IDENTIFIED WHERE THEY OCCUR.
  - SUBSCRIPT LETTER BESIDE SWITCH OR RECEPTACLE SYMBOL INDICATES THE TYPE AS FOLLOWS:  
G.F.C.I. - GROUND FAULT INTERRUPTING  
3R OR M.P. - REARER PROOF  
A.F.P. - ABOVE FINISHED FLOOR  
W - WALL MOUNTED  
C - COUNTER MOUNTED, +3" ABOVE SPLASH BOARD, COUNTER TOP OR CABINET TOP  
P - PILOT LIGHT AT THE SWITCH HANDLE  
C.I.G. - CEILING MOUNTED
  - MOUNTING HEIGHTS SHOWN IN THE LEGEND SHALL BE FOLLOWED UNLESS NOTED ON THE FLOOR PLANS. SCHEDULES ARE SHOWN DIFFERENTLY ON ARCHITECTURAL ELEVATIONS.
  - THE EXACT LOCATIONS OF FEEDERS TO MECHANICAL EQUIPMENT SHALL BE DETERMINED AFTER COMPLETION OF MAJOR MECHANICAL WORK.
  - ALL EQUIPMENT CONNECTIONS ARE SHOWN IN THEIR APPROXIMATE LOCATIONS. THE CONTRACTOR SHALL VERIFY EXACT LOCATIONS OF ALL CONNECTIONS WITH OTHER TRADES SUPPLYING EQUIPMENT TO AVOID CONFLICTS OR INTERFERENCE.
  - ALL SWITCHES FOR LOCAL CONTROL OF LIGHTING SHALL BE LOCATED ON STRIKE SIDE OF SINGLE AND DOUBLE SWITCHES.
  - THE PANELBOARD CIRCUIT NUMBERS NOTED ON THE DRAWINGS MAY NOT CORRESPOND WITH THE ACTUAL BREAKER ARRANGEMENT IN PANELBOARDS ACTUALLY INSTALLED. THE CONTRACTOR SHALL VERIFY THE ACTUAL BREAKER ARRANGEMENT IN THE PANELBOARDS BEFORE ANY WORK IS DONE. THE CONTRACTOR SHALL FURNISH THE CONTRACTOR WITH THE PANELBOARD CIRCUIT NUMBERS ACTUALLY USED FOR THE BRANCH CIRCUITS.
  - ALL CONDUITS RUN ABOVE THE CEILING, AND ALL OTHER AREAS ARE DIAGNOSTIC. THIS WORK SHALL BE COMPLETED PRIOR TO THE MECHANICAL/ELECTRICAL CONTRACTOR PRIOR TO ACTUAL INSTALLATION.



GROUNDING SCHEMATIC  
NO SCALE



**SITE VISIT**  
ALL RESPECTIVE BIDDERS ARE REQUIRED TO VISIT THE JOB SITE OF ALL WORK TO BE PERFORMED UNDER THIS CONTRACT. SPECIAL AND SPECIAL CONDITIONS TO BE ENCOUNTERED WHICH WILL HAVE A BEARING ON LABOR, MATERIALS, AND EQUIPMENT, INCLUDING PROTECTION OF THE WORK. FAILURE TO DO SO SHALL NOT RELIEVE THE CONTRACTOR OF THE OBLIGATION OF COMPLETING THE DIFFICULTIES OF PERFORMING THE WORK TO BE DONE.

HANOVER ENGINEERS P.C.  
CONSULTING ENGINEERS  
RICHMOND, VIRGINIA