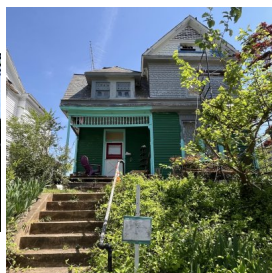


# 844 Rivermont Ave



Categories	Lower Rivermont
Address	844 Rivermont Ave
Property Name	--
Date Built	1892
Architect	Edward G. Frye
Contractor	--
Function	Single Family
Style & Architectural Description	Queen Anne. Unusual 2-story, 2-bay gabrel-roofed house with 2-story projecting gable-roofed front bay. Roof overhangs the front, creating small 1-bay porch. First story is sheathed with weatherboard, second story has shingles. Attic story has pedimented gable end, eyebrow window, louvered vent. Hip-roofed dormer on front facade. Many original shutters still remain.
Owners	<ul style="list-style-type: none"> <li>• 1892-Unknown</li> <li>• Unknown-1963 R. G. Evans</li> <li>• 1963-1964 Robert Evans</li> <li>• 1964-2001 Carl E. Tucker</li> <li>• 2001-2002 Patrick Henry Boys &amp; Girls Plantation</li> <li>• 2002-2007 Barbara M. Langley</li> <li>• 2007 Tony West &amp; Welford R. Brown Jr.</li> <li>• 2007-2010 Welford R. Brown Jr.</li> <li>• 2010-2012 Branch Banking &amp; Trust Company</li> <li>• 2014 Stonecrest Income and Opportunity</li> <li>• 2014 Colonial Funding Group LLC</li> <li>• 2014-2015 Pancea Fund LLC</li> <li>• 2015-2016 Cascade Note Platform</li> <li>• 2016-Present James Warinner</li> </ul>
Anecdotal Information	--

## Tour Properties

- Map Sections
- Upper Rivermont
- Middle Rivermont
- Lower Rivermont

## About Us

- Our History
- When Trolleys Moved Lynchburg
- Rivermont Memories
- About Rivermont

## Contact Us

**Gerard Sherayko**

Department of History

Randolph College  
2500 Rivermont Avenue  
Lynchburg, VA 24503

[Email](#)

Friends of Rivermont Inc. is the sole owner of this website and reserves the right to decide matters of content.

