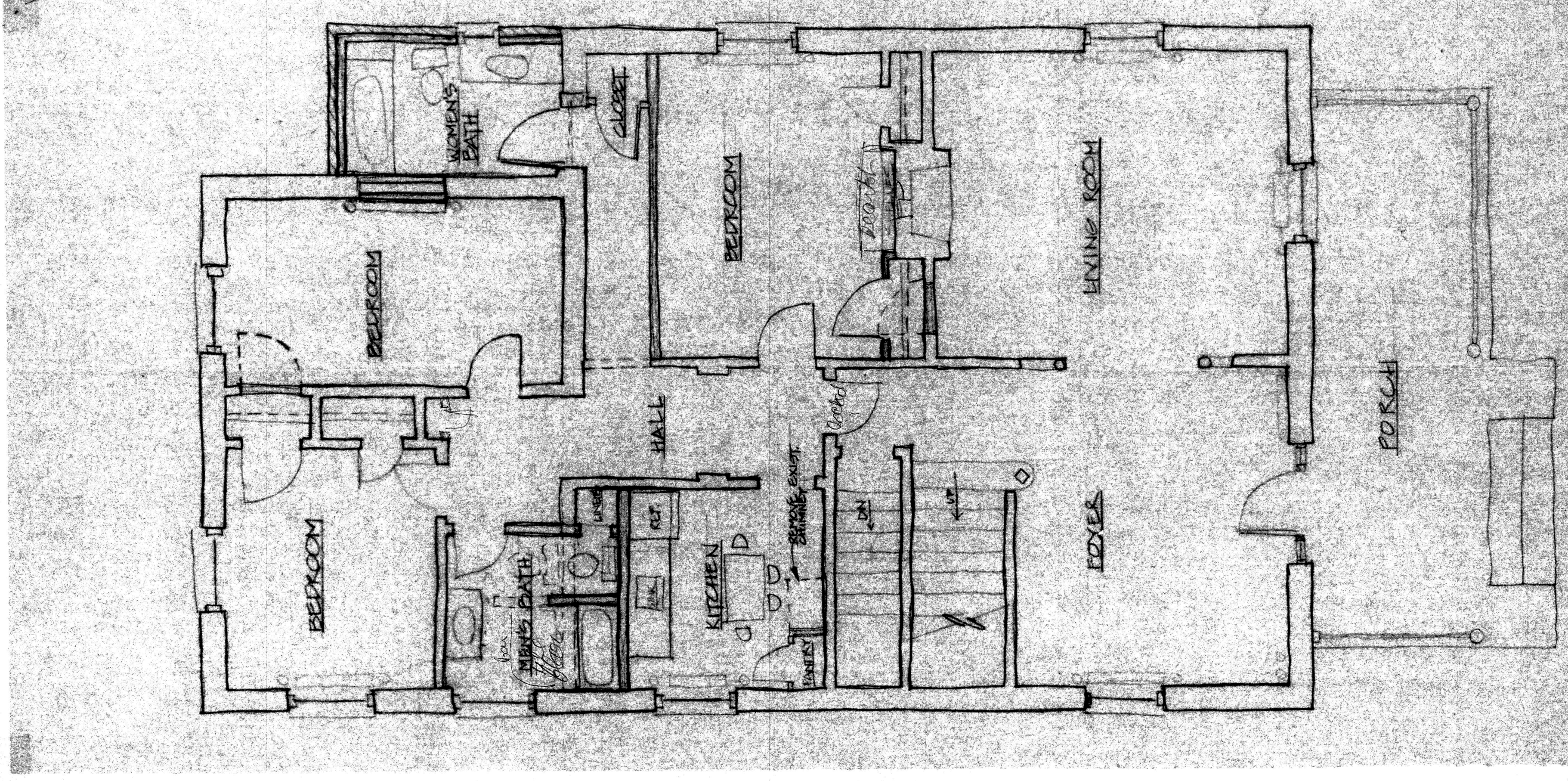
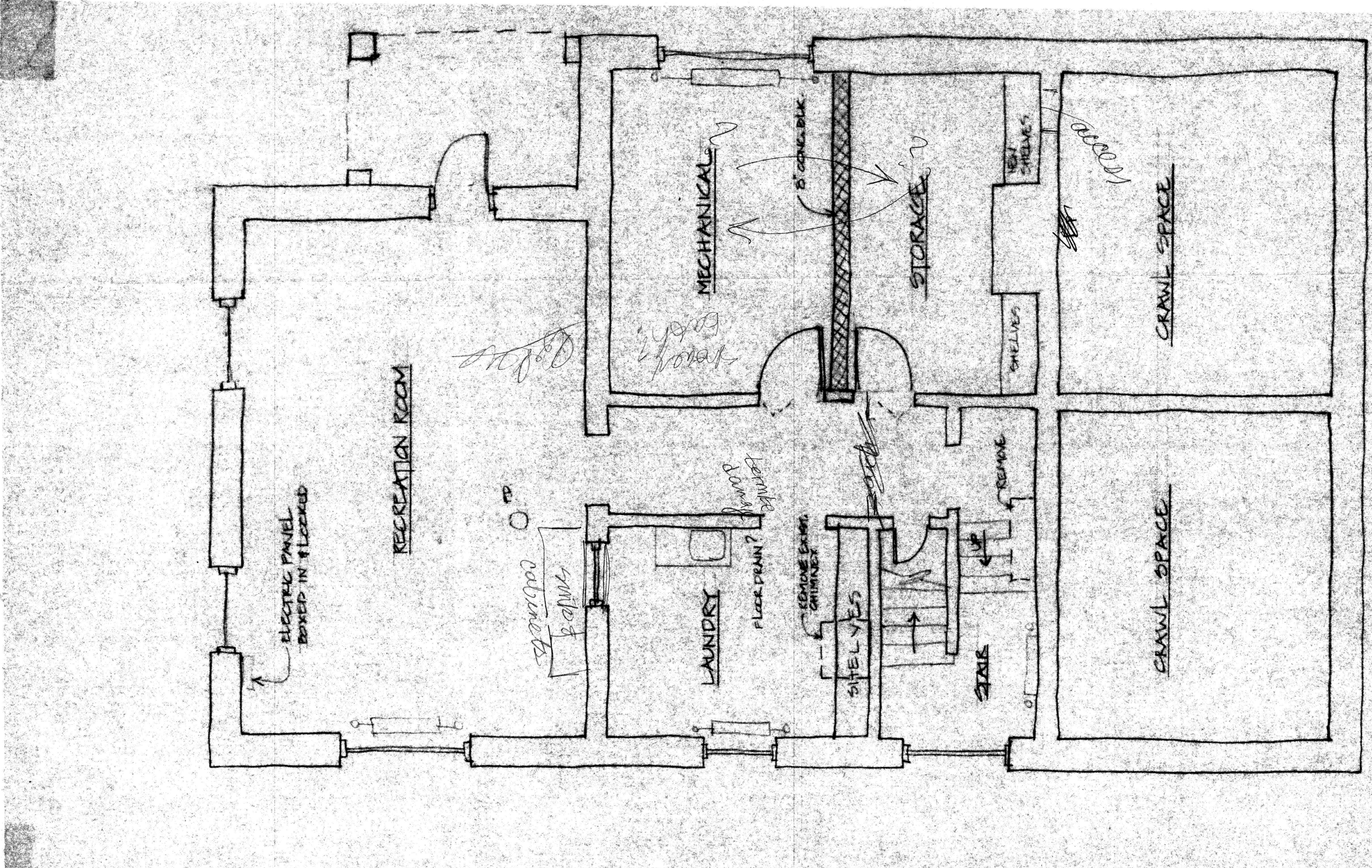


PROPOSED SECOND FLOOR PLAN
1/4" = 1'-0"



PROPOSED FIRST FLOOR PLAN
1/4" = 1'-0"



PROPOSED BASEMENT FLOOR PLAN
1/4" = 1'-0"

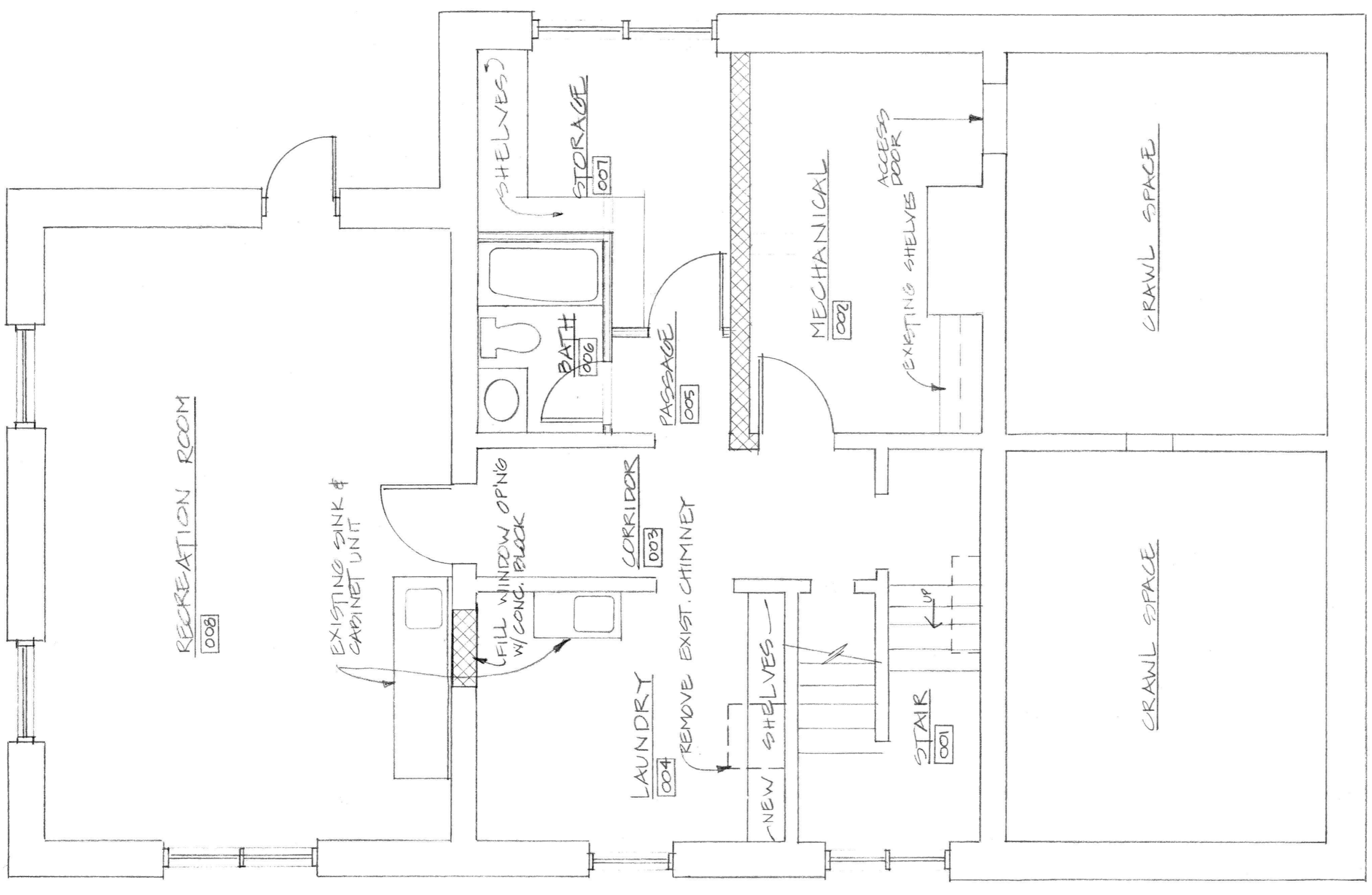
NUMBER	1555
DATE	4-25-08
SHEET	A-1


4-29-08

ALTERATIONS & ADDITIONS TO TERRY COTTAGE FOR
PRESBYTERIAN HOME
LENOXSBURG,
VIRGINIA

FAUBER
ARCHITECTS
A PROFESSIONAL CORPORATION
P.O. BOX 362, FOREST, VA 24551 (804) 525-2948

BASEMENT
1/4" = 1'-0"



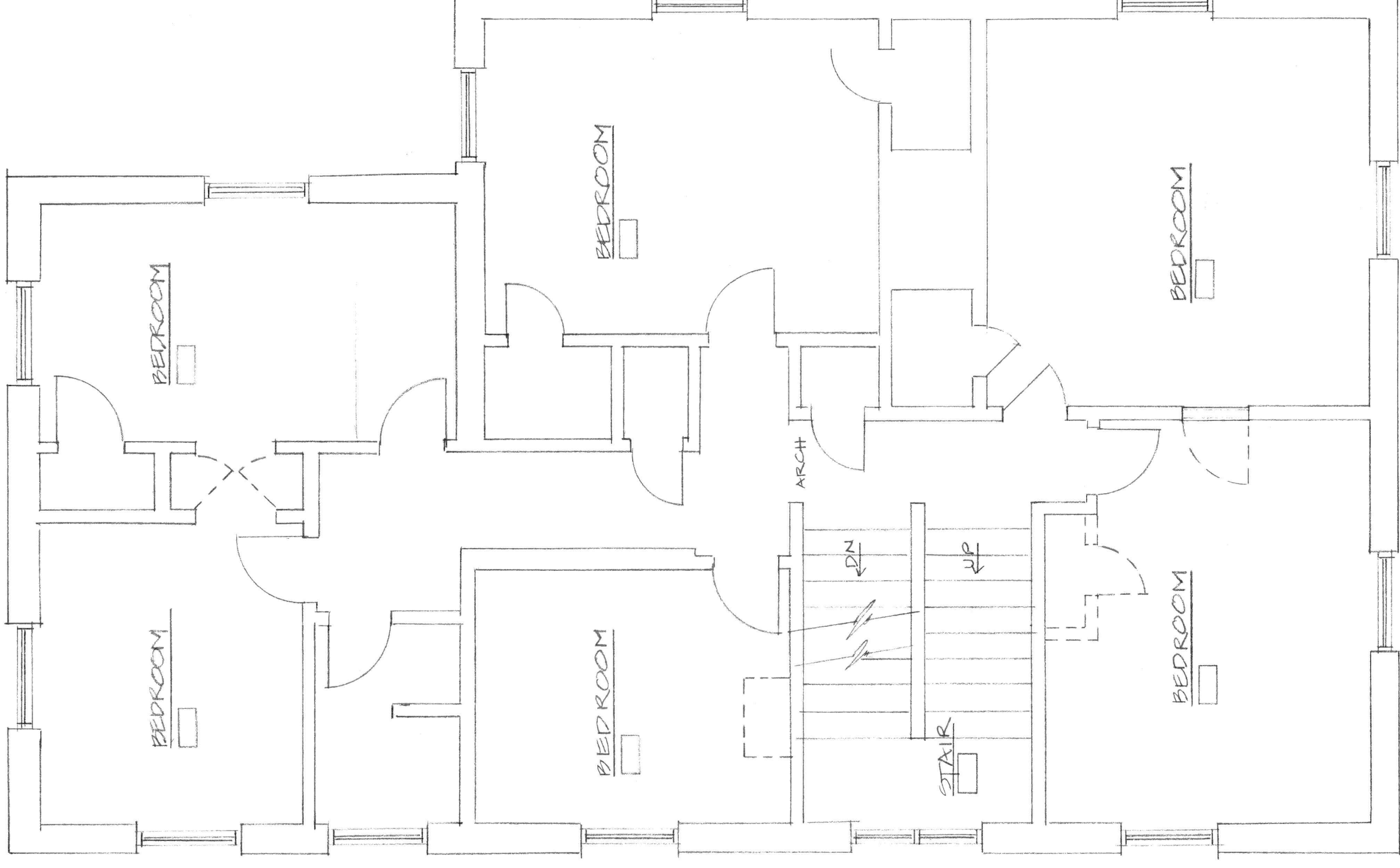
NORTH  BASEMENT PLAN
1/4" = 1'-0"

FIRST & SECOND FLOOR PLANS
1/4" = 1'-0"

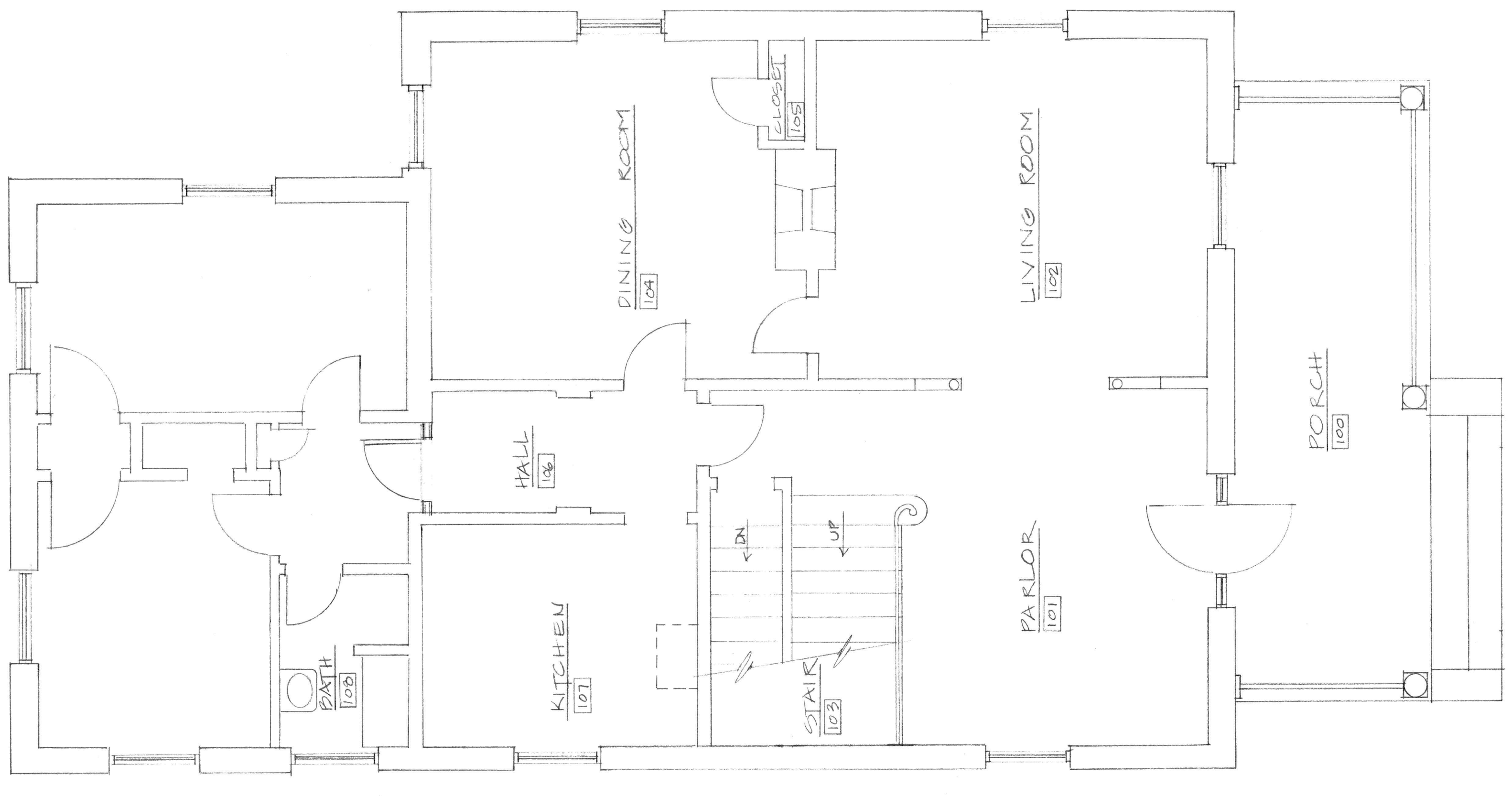
FAUBER
A PROFESSIONAL CORPORATION
ARCHITECTS
P.O. BOX 362, FOREST, VA 24551 (804) 525-2948

ALTERATIONS AND ADDITIONS TO TERRY COTTAGE FOR
PRESBYTERIAN HOME
LYNCHBURG, VIRGINIA

NUMBER	15045	SHEET	A-2
DATE	4/25/88		
4/25/88		4/25/88	



NORTH
SECOND FLOOR PLAN
1/4" = 1'-0"



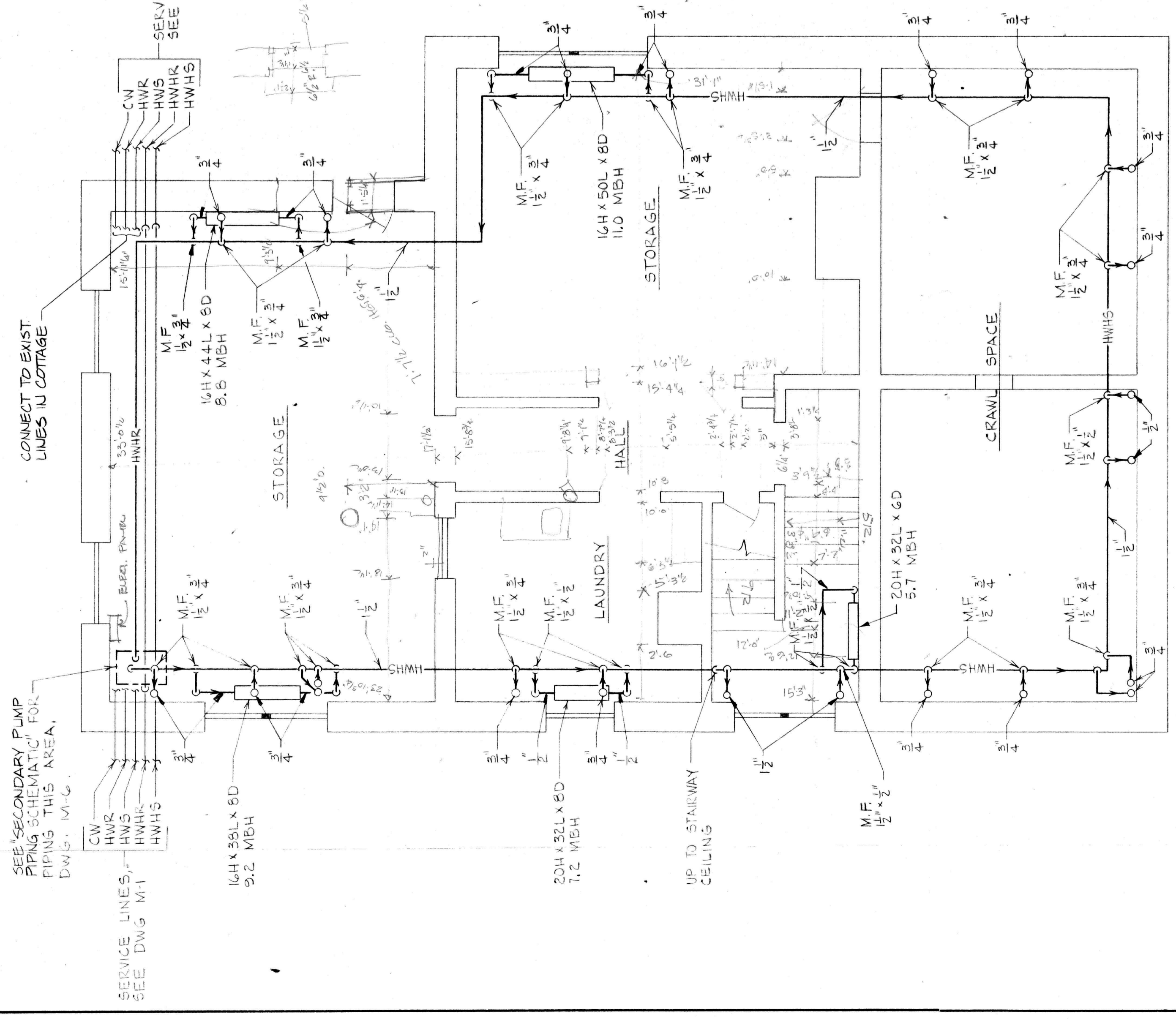
NORTH
FIRST FLOOR PLAN
1/4" = 1'-0"

SEE SECONDARY PUMP PIPING SCHEMATIC FOR PIPING THIS AREA. DWG. M.C.

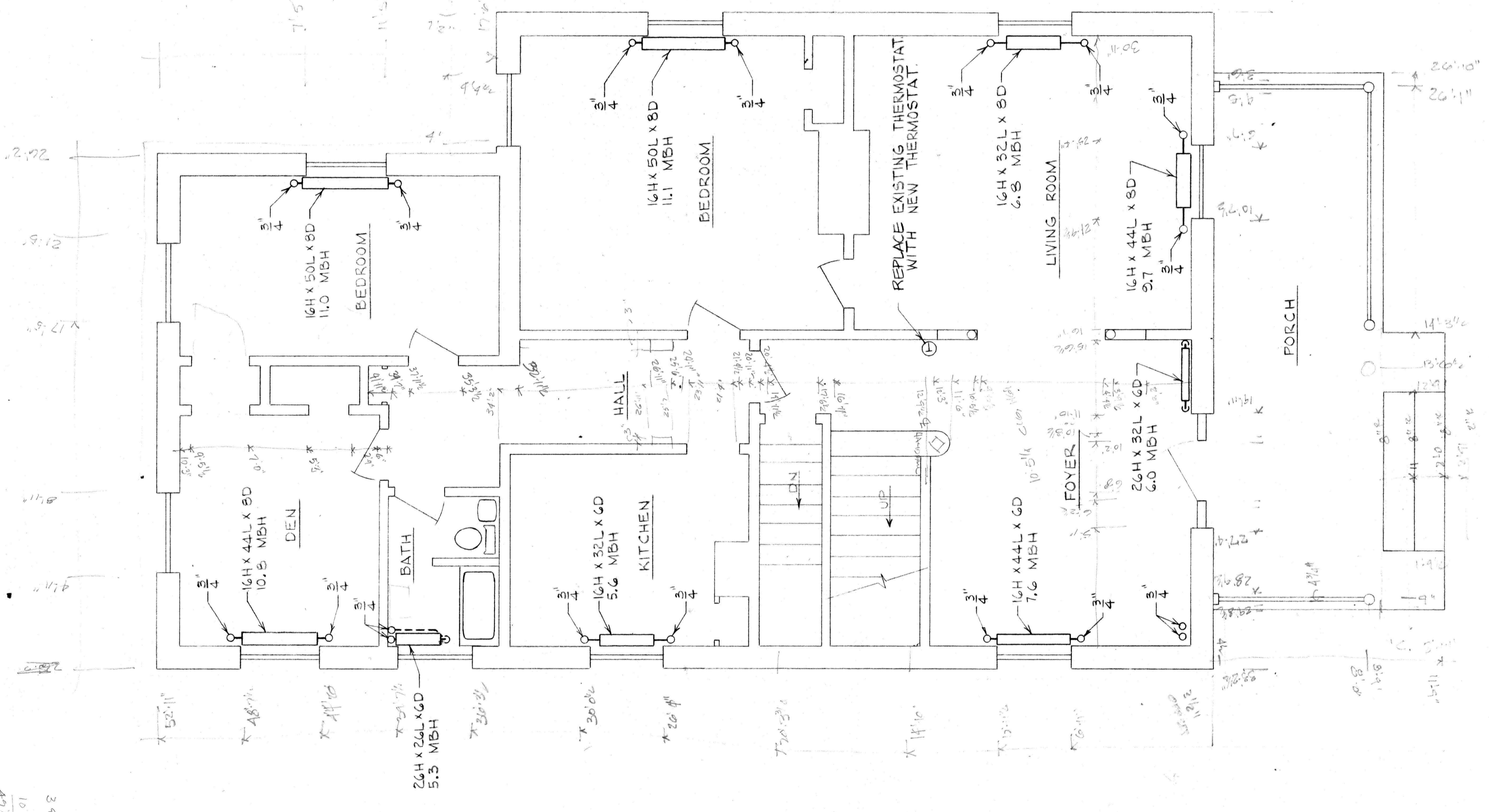
SERVICE LINES, SEE DWG. M-1

CONNECT TO EXIST LINES IN COTTAGE

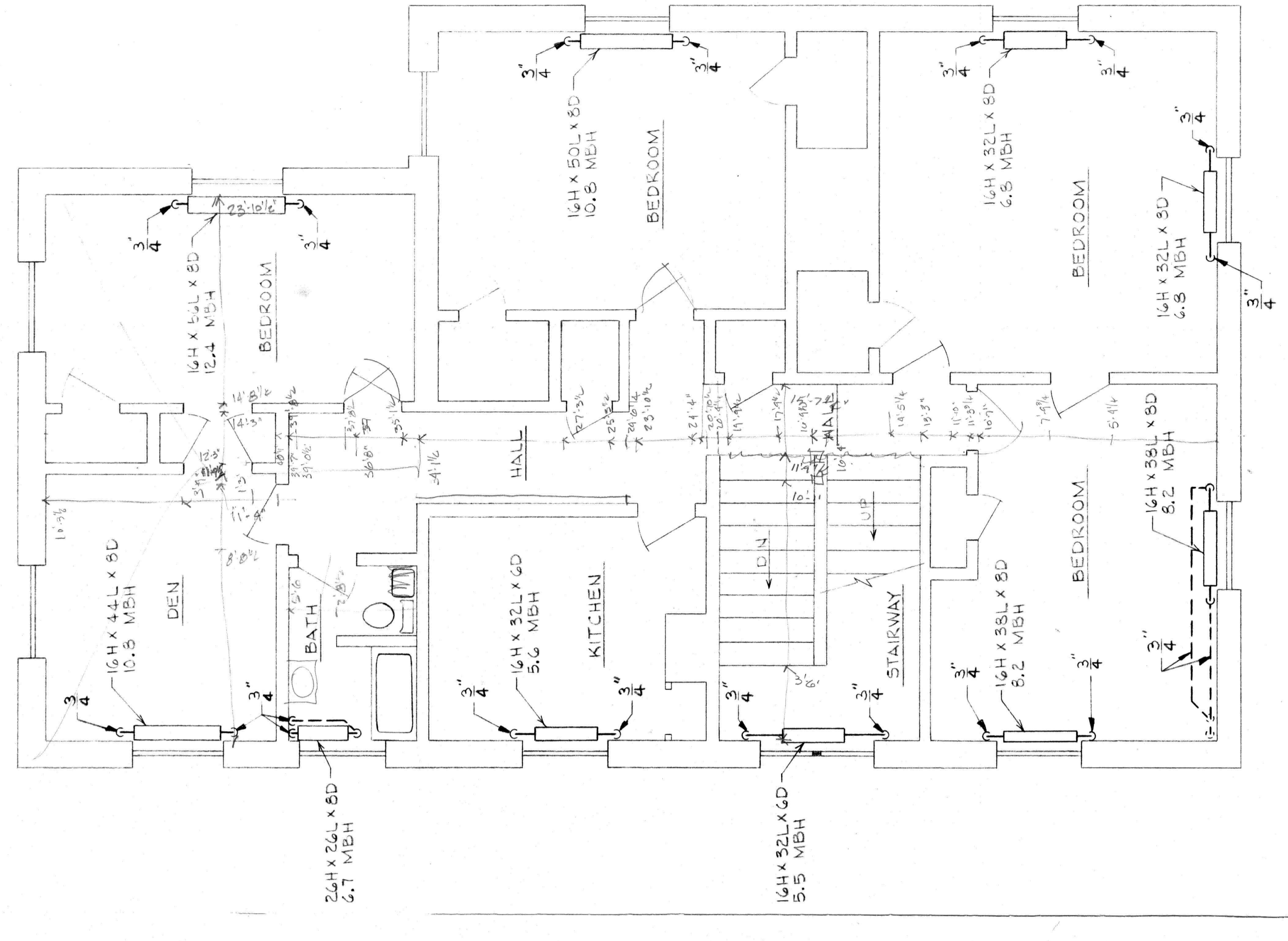
SERVICE LINES, SEE DWG. M-1



BASEMENT PLAN-TERRY COTTAGE



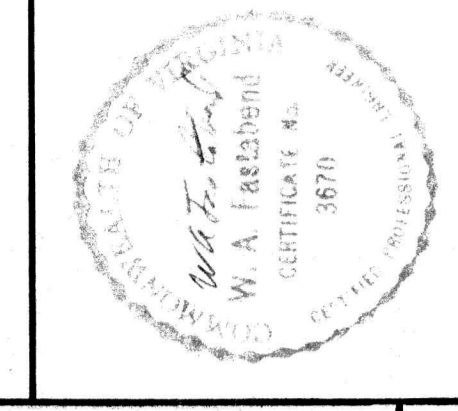
FIRST FLOOR PLAN-TERRY COTTAGE



SECOND FLOOR PLAN-TERRY COTTAGE

PRESBYTERIAN HOME
LYNCHBURG, VIRGINIA
MECHANICAL RENOVATIONS

WILEY & WILSON, INC.
ENGINEERS • ARCHITECTS • PLANNERS



DESIGNED	SCALE 1/4" = 1'-0"
DRAWN	DATE FEB. 27, 1976
CHECKED	COMM. NO. 5156
REFERENCE	MECHANICAL
SUBTITLE BASEMENT, 1ST & 2ND FLOOR PLANS - TERRY COTTAGE	
PERMANENT FILE NO.	DWG. M-L-7
	7/6-3/7

REVISIONS

A	B	C	D	E	F	G	H	I	J	K	L
---	---	---	---	---	---	---	---	---	---	---	---